

VST-SMASH: VST Survey of Mass Assembly and Structural Hierarchy

I. Survey presentation and deep photometry of IC 5332: Tracing the mass assembly in the challenging faintest-end regime

R. Ragusa,^{1*} C. Tortora,¹ L. Hunt,² M. Spavone,¹ M. Baes,³ Abdurro'uf,⁴ M. Gatto,¹ F. Annibali,⁵ A. Mercurio,^{1,6,7}
N. Bellucco,⁸ A. Unni,¹ E. Schinnerer⁹

¹ INAF – Osservatorio Astronomico di Capodimonte, Salita Moiariello 16, I-80131, Napoli, Italy

² INAF – Osservatorio Astrofisico di Arcetri, Largo Enrico Fermi 5, 50125, Firenze, Italy

³ Sterrenkundig Observatorium, Universiteit Gent, Krijgslaan 281 S9, 9000 Gent, Belgium

⁴ Department of Astronomy, Indiana University, 727 East Third Street, Bloomington, IN 47405, USA

⁵ INAF - Osservatorio di Astrofisica e Scienza dello Spazio di Bologna, Via Gobetti 93/3, I-40129 Bologna, Italy

⁶ Università di Salerno, Dipartimento di Fisica “E.R. Caianiello”, Via Giovanni Paolo II 132, 84084 Fisciano (SA), Italy.

⁷ INFN – Gruppo Collegato di Salerno – Sezione di Napoli, Dipartimento di Fisica “E.R. Caianiello”, Università di Salerno, Via Giovanni Paolo II, 132, 84084 Fisciano (SA), Italy.

⁸ Department of Physics and Astronomy, University of Padua, Italy

⁹ Max Planck Institute for Astronomy, Königstuhl 17, D-69117 Heidelberg, Germany

April 16, 2026

ABSTRACT

Context. Understanding the formation and evolution of late-type galaxies requires deep imaging for tracing the faintest stellar components in their outskirts (i.e. accreted material, diffuse halos, and tidal streams). Despite their crucial role in the build-up of stellar mass, these low-surface-brightness features remain largely unexplored due to observational limitations. The VST Survey of Mass Assembly and Structural Hierarchy (VST-SMASH) is designed to fill this gap, providing deep, wide-field optical imaging for a volume-limited sample of nearby spiral galaxies ($D < 11$ Mpc), overlapping with the *Euclid* Wide Survey in the southern hemisphere.

Aims. This paper aims to introduce the VST-SMASH survey and showcase its scientific potential through the analysis of IC 5332, a late-type spiral galaxy observed in the g , r , and i bands. The main goal is to demonstrate the depth, quality, and diagnostic power of the dataset in tracing low-surface-brightness features and structural components in galactic outskirts.

Methods. We carried out detailed surface photometry of IC 5332, using elliptical isophotal fitting and growth curve analysis to extract radial surface brightness and colour profiles down to $\mu_r \sim 30$ mag arcsec⁻². We performed multi-component Sérsic decompositions in each band and constructed stellar mass surface density profiles. Furthermore, we identified and characterized faint stellar streams visible in the very deep and smoothed images, estimating their colours and comparing them with adjacent galactic regions.

Results. While the internal (< 1 effective radius) negative colour gradients can be explained by dissipative (monolithic) collapses and supernovae outflows, the colour profiles at larger radii reveal a significant gradient towards redder $g - r$ and $g - i$, spatially consistent with the presence of accreted populations in the outskirts. Nevertheless, we also find bluer $r - i$, which, together with the behaviour of $g - r$ and $g - i$, could be explained by strong $H\alpha$ emission. Single-component Sérsic fits fail to reproduce the observed light distribution, especially in the outer regions, requiring a two-component model. In the outskirts, multiple faint stellar streams are detected, with integrated $g - r$ colours consistent with disrupted dwarf and/or low-surface-brightness satellites. However, spectroscopic follow-ups would be needed to detect possible strong emission lines, which could affect the r -band photometry. These findings support a scenario of ongoing stellar mass assembly through accretion and highlight the capability of VST-SMASH to uncover faint structures in nearby galaxies.

Key words. Galaxies: formation, Galaxies: evolution, dark matter, Methods: numerical

1. Introduction

The study of the outer halos of galaxies and, in particular, of the low-surface-brightness (LSB) structures, is pivotal for understanding the hierarchical nature of galaxy formation and the complex evolutionary pathways that lead to the diversity observed in the modern Universe. Theoretical frameworks grounded in the Λ CDM (lambda cold dark matter) cosmolog-

ical model, the most accredited scenario, posit that the Universe's structure develops hierarchically: small-scale perturbations in the early Universe collapse under gravity to form the first galaxies, which then merge and accrete material over time to create larger, more complex systems (e.g. Blumenthal et al. 1984; White & Frenk 1991; Springel et al. 2008).

Within this scenario, LSB structures such as tidal streams, stellar halos, diffuse plumes, and intra-group or intra-cluster light (IGL or ICL) preserve the fossil record of past gravitational

* E-mail: rossella.ragusa@inaf.it

interactions. These features typically arise from minor mergers (mass ratios $\sim 1:10$, or lower; e.g. [Conselice et al. 2014](#)), the disruption of dwarf galaxy satellites, or the stripping of satellite outskirts. Their origin can be investigated through radial colour profiles, tracing stellar population gradients from the galaxy core to its faint periphery. Mergers tend to flatten these gradients, whereas tidal stripping or dwarf disruption produces stronger colour variations (e.g. [Montes 2022](#)). Deep, wide-field, and multi-band photometry is therefore essential to probe stellar populations and reveal the structure of faint outskirts. The resulting streams, arcs, and diffuse remnants also trace the underlying DM distribution (e.g. [Johnston et al. 2001](#); [Cooper et al. 2010](#); [Nibauer et al. 2025](#); [Starkman et al. 2025](#)), and provide critical tests for numerical simulations of galaxy growth ([Bell et al. 2008](#); [Sandford et al. 2017](#)).

Detecting and characterizing LSB features is observationally challenging, as they typically lie below $\mu_V \sim 27$ mag arcsec $^{-2}$. Such studies require wide-field, deep, and high-resolution imaging to distinguish faint emission from sky background, scattered light, or Galactic cirrus, as well as the light coming from foreground or background sources in the field (e.g. [Trujillo & Fliri 2016](#); [Román et al. 2020](#); [Ragusa et al. 2021](#)). Traditional surveys have been constrained by sky brightness, detector sensitivity, and limited field of view (FoV), preventing the recovery of extended diffuse structures ([Martínez-Delgado et al. 2010](#)). Even space-based facilities such as the *Hubble* Space Telescope (HST), despite their resolution, are hindered by a narrow FoV that restricts mapping of galactic outskirts ([Radburn-Smith et al. 2011](#)).

Until recently, detecting LSB features was extremely challenging. The advent of Gaia and the Dark Energy Survey (DES) has marked a ‘golden age’ for stellar stream studies (e.g. [Belokurov et al. 2017](#); [Shipp et al. 2018](#)). While these surveys have provided key results within the Local Group (LG), deeper imaging beyond it is crucial to fully trace galaxy assembly. So far, systematic searches for tidal structures outside the LG remain limited, which emphasizes the need for wider, homogeneous studies. Ground-based surveys such as MATLAS (Mass Assembly of early-Type GaLaxies with their fine Structures; [Bilek et al. 2020](#)), ELVES (Exploration of Local Volume Satellites; [Carlsten et al. 2022](#)), SSH (Smallest Scale of Hierarchy Survey; [Anibali et al. 2020](#)), and LIGHTS (LBT Imaging of Galactic Halos and Tidal Structures; [Trujillo et al. 2021](#)) have significantly advanced the detection of faint stellar streams and satellites, though most focus on the northern sky. The southern hemisphere remains underexplored—an important gap given its overlap with major upcoming surveys such as *Euclid*. The VLT Survey Telescope (VST) at Paranal Observatory (Chile) is uniquely suited to bridge this gap. Its OmegaCAM, with a 1-square-degree FoV, is ideal for deep imaging across extensive areas ([Arnaboldi et al. 1998](#); [Kuijken et al. 2002](#)). The VST has shown its capability through successful projects such as VEGAS (VST Early-type Galaxy Survey; [Capaccioli et al. 2015](#)) and the Fornax Deep Survey (FDS; [Iodice et al. 2016](#)). These surveys demonstrated that VST can achieve surface brightness (SB) limits down to ~ 29 – 30 mag/arcsec 2 in the g and r bands, which are deep enough to identify diffuse LSB features of both early-type and late-type galaxies (e.g. [Iodice et al. 2016, 2017](#); [Spavone et al. 2017a](#); [Ragusa et al. 2021, 2022, 2023](#)).

The VST Survey of Mass Assembly and Structural Hierarchy (VST-SMASH, P.I. C. Tortora) aims to leverage these strengths to conduct a systematic survey of 27 nearby galaxies ($D \leq 11$ Mpc) within the *Euclid* footprint ([Tortora et al. 2024](#)). This survey, conducted in the g , r , and i bands, offers a unique opportu-

nity to map LSB features and probe the mass assembly history of galaxies in the local volume. By extending the depth of imaging and capturing the halo structures, VST-SMASH can reveal subtle, yet critical, components of galaxy assembly, including stellar streams and outer shells, which are often missed by shallower surveys. Beyond morphology, LSB observations constrain the age and metallicity distributions of stellar populations in the outskirts (e.g. [Sanderson et al. 2018](#)), offering clues to galaxies’ accretion histories and merger processes. They also probe the underlying dark matter (DM) potential, sensitive to halo substructures predicted by Λ CDM models (e.g. [Bell et al. 2008](#); [Sandford et al. 2017](#); [Tulin & Yu 2018](#); [Nibauer et al. 2025](#); [Starkman et al. 2025](#)), and thus link baryonic assembly to DM structure formation. Observatories such as the *Rubin* Observatory’s Legacy Survey of Space and Time (LSST) and *Euclid* will greatly advance LSB studies thanks to their wide FoV and deep imaging capabilities, though their full impact will emerge only over the next decade. LSST will reach the required SB limits after several years of cumulative observations ($\mu_r \sim 30.3$ mag arcsec $^{-2}$ in ~ 10 years; [Brough et al. 2024](#)), while *Euclid*, operating mainly in the NIR with a single broad optical filter (VIS), will lack the full colour information needed for detailed LSB analyses. In this context, VST-SMASH can deliver immediate scientific returns and acts as an optical complement to *Euclid*. Providing deep, multi-band, wide-field optical imaging of southern-sky galaxies, it fills a crucial observational gap and complements other existing surveys such as MATLAS, ELVES, SSH, LIGHTS, VEGAS, and FDS. Its results will yield essential datasets to test hierarchical formation models, constrain DM properties, and refine our understanding of galaxy evolution.

In this first paper, we: i) introduce the VST-SMASH survey, presenting the galaxy sample, observations, and data reduction, and verify that the planned survey depth is reached (Sect. 2); ii) illustrate the first VST-SMASH galaxy observed and reduced, IC 5332, a low-mass, almost face-on spiral galaxy at a distance of 7.8 Mpc ([Meyer et al. 2004](#); [Karachentsev et al. 2013](#)), together with the literature (Sect. 3); iii) present the deep and wide field photometric analysis for IC 5332 (Sect. 4); iv) discuss the results (Sect. 5), draw conclusions, and describe future prospects (Sect. 6). The magnitudes throughout the paper are provided in the AB system, and have been corrected for Galactic extinction using the dust maps of [Schlafly & Finkbeiner \(2011\)](#). The V -band foreground extinction¹ is $A_V = 0.046$ mag, which corresponds to $A_g = 0.063$ mag, $A_r = 0.046$ mag, and $A_i = 0.035$ mag in the VST g , r , and i filters, respectively.

2. The VST-SMASH survey

The primary goal of the VST-SMASH Survey is to achieve an extensive characterization of stellar populations, tidal structures, dwarf galaxies, globular clusters, and all the LSB features around a galaxy sample within a volume-limited distance of ~ 11 Mpc. Leveraging the capabilities of the VST and OmegaCAM, the survey targets SB limits of ~ 30 , 30 , and 28 mag/arcsec 2 in g , r , and i bands in the AB system, respectively. This section outlines the sample selection defining the complete VST-SMASH survey (Sect. 2.1), followed by a discussion of observation strategies and data reduction (Sect. 2.2) and of the method adopted for determining the surface photometry (Sect. 2.3).

¹ We retrieved foreground extinction in the three bands from the NASA/IPAC Extragalactic Database (NED, <https://ned.ipac.caltech.edu>).

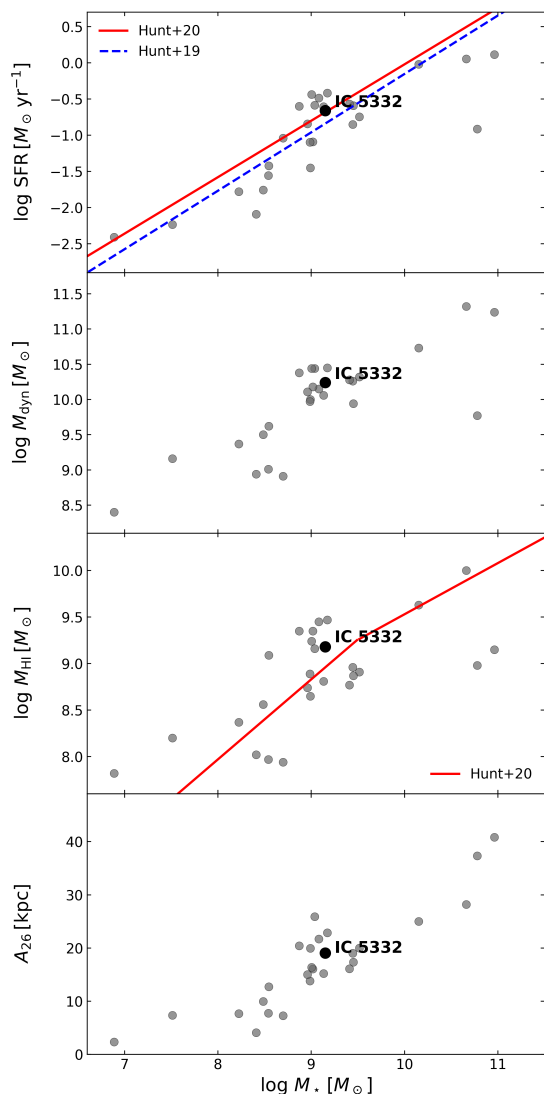


Fig. 1. VST-SMASH sample properties. From top to bottom, the panels show the SFR, dynamical mass, HI gas mass, and Holmberg radius (in kiloparsecs) as functions of stellar mass for the VST-SMASH sample. The target analysed in this paper, IC 5332, is highlighted with black symbols. SFR- and $M_{\text{HI}}-M_{\star}$ best-fit relations from Hunt et al. (2019) and Hunt et al. (2020) are also shown.

2.1. Galaxy sample

To comprehensively characterize mass assembly processes within a distance of 11 Mpc, we selected a volume-limited galaxy sample that includes diverse objects in terms of morphological type, mass, and size, fully exploiting the capabilities of the VST and OmegaCAM. By observing both the target fields and an adjacent field for effective background subtraction (see Sect. 2.2 for a detailed description), we can analyse the galaxies’ halos up to roughly 250 kpc, depending on the targets’ distances. The sample was chosen from the Updated Nearby Galaxy Catalogue (UNGC, Karachentsev et al. 2013), which includes 869 galaxies within 11 Mpc, applying the following criteria:

- Declination: only galaxies with declinations of ≤ 5 deg were included to ensure optimal visibility conditions.

- Holmberg diameter: we selected galaxies with Holmberg diameter (i.e. the radius at which $\mu_B = 26.5$ mag arcsec $^{-2}$) $A_{26} \geq 5$ arcmin to maximize the use of VST’s wide FoV.
- *Euclid* footprint: the targets were constrained to lie within the *Euclid* observational footprint.
- Exclusions: i) large galaxies, such as the LMC, SMC, and Sag dSph, as well as Milky Way companions, were excluded due to extensive previous study; ii) NGC 3115 was excluded as it was already observed with VST; iii) galaxies heavily affected by overlapping or very bright stars in the field were also excluded.

This selection yielded a final sample of 27 galaxies, covering a broad range of properties. The galaxies span total masses between $10^9 - 2 \times 10^{11} M_{\odot}$, stellar masses in the range $10^7 - 10^{11} M_{\odot}$, HI gas masses from 10^8 to $10^{10} M_{\odot}$, and a variety of morphological types, orientations, and environments. Their apparent sizes range significantly, with Holmberg diameters A_{26} between 5 and 40 arcmin (corresponding to 2 – 40 kpc). A table summarizing the targets and their main properties, along with additional details on the survey objectives, is provided by Tortora et al. (2024). In Fig. 1, we present the main physical parameters of the VST-SMASH sample, showing how the star formation rate (SFR), the total dynamical mass, HI gas mass, and Holmberg radius (A_{26}) correlate with stellar mass. The SFR was computed as the mean of the $H\alpha$ - and FUV-based estimates from Karachentsev et al. (2013), corrected to a Chabrier IMF by subtracting 0.25 dex (Tortora et al. 2009). Dynamical masses within the Holmberg radius and HI masses were taken from Karachentsev et al. (2013), the former derived from rotation curves and the latter from integrated HI fluxes. The Holmberg radius was converted to physical units using catalogue distances. Stellar masses were derived from the catalogue BVK magnitudes using the mass-to-light ratio (M/L)–colour relations of Bell & de Jong (2001), based on a scaled Salpeter IMF. The SFR- and $M_{\text{HI}}-M_{\star}$ relations of the VST-SMASH sample are consistent with the literature (Hunt et al. 2019, 2020).

In this work, we focus on IC 5332, intending to present preliminary results and the goals achieved by the survey. This galaxy is described in Sect. 3.1, with its characteristics outlined in Table 1, and its position in the various scaling relations shown in Fig. 1.

2.2. Observations and data reduction

The data utilized in this study stem from the VST-SMASH survey, an extensive imaging survey in g , r , and i bands, conducted using the ESO’s VST, a 2.6-meter telescope designed for wide-field optical imaging. Equipped with OmegaCAM (Kuijken et al. 2002), which provides a 1 square degree FoV at a pixel scale of 0.21 arcsec per pixel, these observations were carried out in service mode under optimal conditions—dark skies and photometric stability with specified lunar illumination limits, benefiting from the sky conditions of Cerro Paranal (Chile). A seeing $\text{FWHM} \leq 1.4$ arcsec in all bands, a maximum airmass of 1.8, along with lunar illumination below 0.3, 0.4, and 0.5 in the g , r , and i bands, respectively, were required with the total exposure times optimized to maximize depth, especially in the g and r bands, which reached 2.5 hours of integration each, while the i band was observed for a total of 2 hours.

In the LSB regime, accurately estimating the sky background contribution is crucial. Depending on the projected radius of the galaxy, two observational strategies were employed: (a) a standard strategy, observing only the field surrounding the target



Fig. 2. Left. Colour composite (using g , r , and i bands) VST images of IC 5332. The image size is $28.3' \times 18.6'$. Right. Enlarged region of the VST FoV ($\sim 61 \times 64$ arcmin, i.e. $\sim 140 \times 145$ kpc) in the deep g -band image centred on IC 5332. North is up and east is to the left.

(ON), or (b) an ON-OFF step-dither strategy, observing both the target field (ON) and an adjacent field (OFF). Each field consists of five pointings in the g and r bands, and four in the i band, centered on different positions. For each pointing, a standard diagonal dither strategy was used (reproducing that tested on FDS and VEGAS data), comprising six short exposures of 300s each. Both of these approaches, optimized by their respective dithering patterns, efficiently bridge the gaps between the 32 CCDs of OmegaCAM on the VST. For the galaxies with a projected major axis under 5 arcmin, the standard strategy was employed, and only the field around the target was observed. As documented in Capaccioli et al. (2015) and Spavone et al. (2017a), this method estimates the sky background directly from the science frame by fitting a two-dimensional (2D) polynomial surface to the mosaic pixel values that are unaffected by celestial objects.

For more extended and bright galaxies with extensive envelopes (e.g. with major axis diameter ≥ 5 arcmin), the ON-OFF step-dither technique was applied. This strategy uses the OFF field (i.e. the frame in proximity, within ± 1 sq. deg., to the science frame but sufficiently far away from the bright, extended halo of the galaxies to avoid contamination from the faint outskirts and ICL) to independently measure the sky background, modelled as a plane, after carefully masking the foreground or background sources, and subtracts it from the whole mosaic consisting of the ON and OFF fields, in case it is also needed to manage the OFF frame (see e.g. Spavone et al. 2017b; Ragusa et al. 2021, 2022, 2023). Data reduction and calibration were processed through the Astro-WISE pipeline, developed specifically for OmegaCAM observations (McFarland et al. 2013), encompassing bias, flat-field correction, sky background subtraction, and the creation of a co-added mosaic (for more details see Venhola et al. 2017) with a spatial scale of 0.2 arcsec per pixel.

2.3. Surface photometry

The investigation of LSB structures linked to galaxy halos represents a major challenge in contemporary astronomy due to their extremely faint SB levels ($\mu_V \geq 26\text{--}27$ mag/arcsec²) and, in some cases, their vast spatial scale, as seen in the ICL or the large tidal tails, which can stretch over 100 kpc. These intrinsic properties make LSB features particularly difficult to analyse.

Table 1. Literature data for IC 5332.

Parameter	Value
Target Name	IC 5332 ^(a)
Morphological Type	SA(s)d
Hubble Type	7
Environment	NGC 7713 Group
Right Ascension (J2000)	23:34:27.567
Declination (J2000)	-36:06:03.728
Distance (D) [Mpc]	7.80
Linear scale [kpc/arcsec]	0.0378
A_{26} [arcmin]	8.32
A_{26} [kpc]	19
Ellipticity (ϵ)	0.13
Inclination (i) [$^\circ$]	30
Total Mass ($M_{\text{tot}}(r < A_{26})$) [M_\odot]	1.7×10^{10}
HI Mass (M_{HI}) [M_\odot]	1.5×10^9
Stellar mass (M_\star) [M_\odot]	1.4×10^9 ^(b)
SFR _{Hα} [$M_\odot \text{ yr}^{-1}$]	0.3 ^(c)
SFR _{FUV} [$M_\odot \text{ yr}^{-1}$]	0.4 ^(c)

^(a) Most of the data are taken from Karachentsev et al. (2013), unless otherwise stated.

^(b) Based on BVK magnitudes from Karachentsev et al. (2013) and M/L -colour relations from Bell & de Jong (2001), based on a scaled Salpeter IMF. This value is much lower than the estimate of $7.6 \times 10^9 M_\odot$ reported by Cook et al. (2014), obtained from the $3.6 \mu\text{m}$ emission and assuming a constant $M/L = 0.5$.

^(c) The SFRs were calculated using $H\alpha$ and FUV data and formulae in Karachentsev et al. (2013), and rescaled to a Chabrier IMF. These values are quite consistent with the estimates by Lee et al. (2009), namely 0.34 and $0.5 M_\odot \text{ yr}^{-1}$ (after accounting for the IMF conversion).

As detailed in Sect. 1, overcoming these challenges requires the use of wide-field, ultra-deep, multi-band photometry. Nevertheless, analysing LSB structures adds a layer of complexity to interpretation. Their similar origins through accretion events make it particularly difficult to distinguish LSB features from the original stellar envelope using photometry alone. This difficulty

arises from the gradual and smooth transition between the accreted stellar halo and the surrounding LSB components, which often share comparable SB profiles and are therefore challenging to separate.

To address these complexities, the characterization of the LSB components was conducted through a robust methodology grounded in well-established surface photometry techniques, as described in our recent studies (e.g. Ragusa et al. 2021, 2022, 2023). This approach allows for a detailed examination of faint galactic outskirts and potential tidal features.

This methodology includes cropping low-S/N edges, manual masking of contaminating sources, and correction for scattered light from bright stars. The limiting radius (R_{lim}) was defined where the galaxy’s light merges with residual background fluctuations, using the sky RMS to estimate uncertainties. Isophotal fitting was finally performed in the g , r , and i bands with `photutils`. Ellipse, fixing the centre and deriving radial profiles of SB, ellipticity (ϵ), and position angle (P.A.). These steps ensured a robust characterization of the LSB components. A more detailed description of the surface photometry steps is provided in Appendix A.

3. The first VST-SMASH target: IC 5332

In this section we present the target analysed in this study, providing a concise description of its fundamental characteristics, along with a summary of the key findings reported in the literature in Sect. 3.1. In Sect. 3.2 we provide a general description of the observational setup adopted for the target, the FWHM PSF in the three VST gri bands, as well as the depth achieved.

3.1. IC 5332: The literature

IC 5332 is an almost face-on, LSB spiral galaxy located in the Sculptor constellation, at ~ 7.8 Mpc distance. It belongs to the NGC 7713 group, with NGC 7713 likely acting as its primary perturber. Among the galaxies in the VST-SMASH sample, it exhibits intermediate values of stellar, total, and HI mass. In particular, the stellar and HI masses are both $\sim 10^9 M_{\odot}$, while the total mass is estimated to be $\sim 2 \times 10^{10} M_{\odot}$. The SFR, derived from both $H\alpha$ and FUV emission, is $\sim 0.3 - 0.4 M_{\odot} \text{ yr}^{-1}$. Its main physical properties, compiled from the literature, are summarized in Table 1 and some properties are also visualized in Fig. 1.

It exhibits interesting interstellar structures, particularly in the context of gas dynamics, kinematics, and star formation (SF) processes. The galaxy is part of the PHANGS-ALMA (Schinnerer et al. 2019; Leroy et al. 2021) and PHANGS-JWST (Lee et al. 2023) programmes, and its study provides valuable insights into the interrelation of gas, dust, and SF. Below, we explore key aspects of IC 5332 in terms of its physical properties.

- Star formation and stellar populations: IC 5332 shows many regions of active SF, at a rate consistent with the SF main sequence (Fig. 1, Hunt et al. 2020; Leroy et al. 2021; Popesso et al. 2023). Its SF extends to large galactocentric radii, with UV emission suggesting that the outer disc is still forming stars (Hassani et al. 2024). However, there are no strong spiral patterns or massive star-forming complexes present. Instead, SF occurs in irregular clumps, particularly in the south-east and western regions of the galaxy. The $H\alpha$ and FUV emission (Karachentsev et al. 2013) supports the idea of recent SF in these regions. This irregularity questions the

classification of IC 5332 as an XUV-disc galaxy (Thilker et al. 2007).

- Gas properties and kinematics: IC 5332 exhibits complex gas dynamics, with an extensive HI component detected in its outer disc, as observed by Parkes and ATCA (Pisano et al. 2011). The internal kinematics, as revealed by MeerKAT observations, suggest that IC 5332’s HI disc is relatively undisturbed, with no signs of significant tidal interaction (Leroy et al. 2021). In contrast, PHANGS-JWST data reveal a web of filamentary structure in the interstellar medium (ISM) within the galactic disc. These filaments, lacking a large-scale SF pattern, resemble cold gas filaments seen in simulations of multi-phase disc fragmentation (Meidt & van der Wel 2024). Such structures may result from differential rotation stretching overdensities within the disc (e.g. Duarte-Cabral & Dobbs 2017).
- Metallicity and environmental impact: IC 5332 is characterized by a relatively small number of HII regions, which limits the spatial sampling of its gas-phase metallicity. PHANGS-MUSE data indicate that IC 5332 exhibits a strong gas metallicity gradient (Groves et al. 2023a; Hassani et al. 2024). It also present low gas metallicities, in line with the mass-metallicity relation established by Lee et al. (2006, 2009), according to which less massive galaxies tend to be metal-poorer. Furthermore, as discussed by Leroy et al. (2013), low-metallicity systems such as IC 5332 are expected to show a reduced CO detectability and an increased CO-to- H_2 conversion factor, highlighting the connection between metallicity and the molecular gas content. Though part of the NGC 7713 galaxy group, IC 5332 does not show signs of active interaction with nearby galaxies. However, its location within this group and irregular SF patterns suggest the possibility of past mergers or interactions that may have influenced its outer disc and HI structure (Pisano et al. 2011).

Therefore, IC 5332 presents an intriguing case of a low-mass, star-forming galaxy with a unique interplay between its gas, dust, and star-forming components. The lack of strong spiral arms and ordered star-forming complexes, combined with a complex filamentary gas structure, sets IC 5332 apart from other galaxies in the PHANGS-JWST sample. While the galaxy’s metallicity gradient and PAH properties are consistent with its low SFR, its outer disc may have undergone episodes of interaction, contributing to its current state. Further study of its star-formation history (SFH) will help clarify its evolution and the role of the environment in shaping its properties.

3.2. Observational set-up, PSF, and survey depth

IC 5332 was observed between May and December 2023 as part of the VST-SMASH runs 110.25AA.001 and 112.266Z.001, under optimal seeing conditions. Due to the galaxy’s large angular size, the ON-OFF strategy was adopted. The OFF frame was used not only to estimate the sky background around IC 5332 but also for the other adjacent field containing NGC 7713, resulting in a mosaic covering approximately 3 sq. degs.. In this paper, however, we focus solely on the surface photometry analysis of IC 5332, and refer the reader to a forthcoming paper for the analysis of the remaining field.

The colour-composite image, created by combining the three bands, is shown in the left panel of Fig. 2, while the g -band image covering an area of approximately 1 square degree is presented in the right panel of Fig. 2. This illustrates how a single VST FoV can encompass a significant portion of the DM

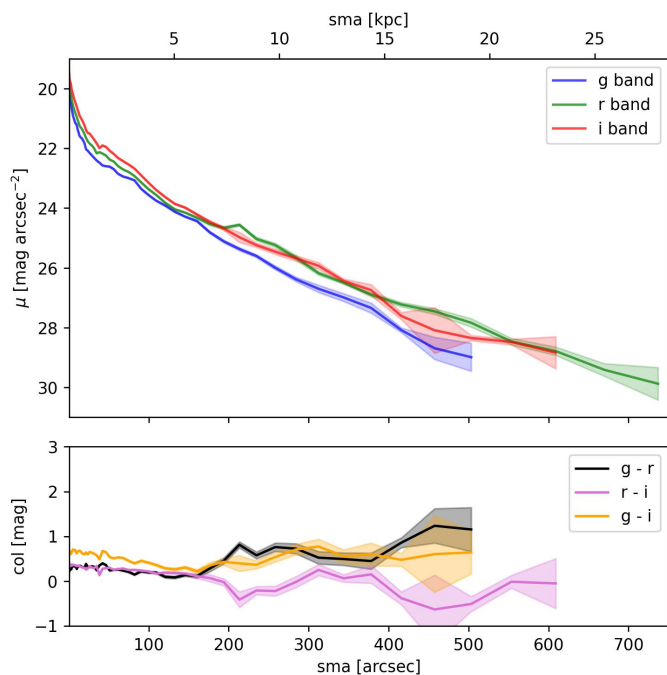


Fig. 3. Deep photometry of IC 5332. Azimuthally averaged SB profiles of IC 5332 in VST g (blue), r (green) and i (red) bands. The $g-r$ (black), $r-i$ (magenta) and $g-i$ (orange) colour profiles of IC 5332 are also shown in the bottom region of the panel.

halos of galaxies targeted by the VST-SMASH survey. In the case of IC 5332, the image allows us to trace its outskirts out to ~ 70 kpc. Furthermore, by leveraging the larger mosaic that includes NGC 7713, we can potentially probe the DM halo of IC 5332 out to a distance of ~ 350 kpc.

We calculated the PSF FWHM by fitting a Moffat function to the stars with the highest S/N, excluding saturated stars, and restricting the analysis to stars in the vicinity of IC 5332, after masking a circular region of 150 arcsec radius centred on the galaxy. From this analysis, we determined median FWHM values of ~ 0.9 , ~ 1.1 , and ~ 0.8 arcsec in the g , r , and i bands, respectively. These values meet the intended observational requirements to conduct studies at both high spatial resolution and great depth, which are essential to accurately trace and characterize LSB features in the outskirts of galaxies (e.g. Ragusa et al. 2021).

Finally, calculating the limiting magnitudes in each band is crucial for verifying our ability to detect and characterize faint, diffuse structures. In the LSB regime, achieving reliable measurements of these limits ensures that we can identify and analyse extended features, such as stellar halos, tidal debris, and other faint structures, which are often concealed within background noise. We used the methods outlined in Hunt et al. (2025) and summarized in Appendix B, to calculate the formal limiting SB, μ_{lim} , within an area of 100 arcsec² at the 1σ level. We find 1σ depths of 30.7, 30.5, and 29.5 mag arcsec⁻² in the g , r , and i bands, respectively, which match the planned depths of VST-SMASH (Tortora et al. 2024), typically required for LSB analyses (e.g. Martínez-Delgado et al. 2010; van Dokkum et al. 2014). These correspond to 1σ noise levels for individual pixels of 26.45, 26.15, and 25.25 mag arcsec⁻² for g , r , and i bands, respectively.

4. IC 5332 deep photometry

IC 5332 is face-on galaxy, often noted for its flocculent spiral structure and low inclination, making it ideal for disc structure studies. In this section we present the results of the deep surface photometry analysis of IC 5332 in the g , r , and i bands, including the two-component Sérsic decomposition, as well as an investigation of its faint outer regions.

4.1. Deep and extended surface brightness and colour profiles

The averaged radial SB profiles in the g , r , and i bands, obtained following the detailed procedure described in App. A, using the initial geometric parameters from Jarrett et al. (2003), are shown in the top panel of Fig. 3. The profiles extend out to 503, 737, and 609 arcsec in the g , r , and i bands respectively, corresponding to galactocentric distances of approximately 19, 28, and 23 kpc. The faintest SB levels reached are 29.1, 29.9, and 28.9 mag arcsec⁻² in the g , r , and i bands, respectively. These SB limits are slightly brighter than the ones we infer over 100 arcsec² regions, because they are averaged over radial bins with areas smaller than this. Specifically, assuming a radial extent of 737 arcsec (609 arcsec for r (i), respectively), we would expect differences of SB limits between the profiles and those given in Sect. 3.2 of 0.54 mag arcsec⁻² in r , and 0.65 mag arcsec⁻² in i . These expected differences are within 0.05 mag arcsec⁻² of the two sets of SB limits given here.

Although our formal depth estimates (calculated in Sect. 3.2) suggest comparable sensitivities in the g and r bands, the automated data-reduction procedure affects the g -band image, producing a residual oversubtraction in the galaxy's outer regions. We applied extensive masking to the areas most affected by this issue, but minor residuals may still be present. This problem is likely related to the background estimation stage, during which the Astro-WISE automatic pipeline may not have properly masked nearby saturated bright stars, leading to an overestimation of the sky level to be subtracted. As a consequence, the oversubtraction in the g band prevents us from tracing its surface-brightness profile down to the same SB levels reached in the r -band image. However, this limitation does not impact our conclusions, which rely mainly on colour profiles that are constrained by the shallower band.

The azimuthally averaged SB profiles, after explicitly correcting for large-scale residual background fluctuations, display a smooth decline with radius, which approximates an exponential trend at intermediate-to-large radii (see the next sections about structural analysis), as typically observed in disc-dominated galaxies. The lower panel of Fig. 3 presents the radial colour profiles in $g-r$, $r-i$, and $g-i$. Also in this case, we allowed the ellipse geometry to vary freely in each band, in order to better trace possible physical variations within the galaxy, since the main goal of our work is to highlight potential asymmetries related to accretion events. However, we emphasize that this choice, which appeared to be the most consistent with our scientific aims, does not significantly affect the results, as can be seen in Fig. 5 (see Sect. 4.4), where the radial trends of ϵ and PA show no substantial variation from band to band.

Within the inner ~ 40 arcsec (~ 1.5 kpc), the colours are remarkably flat, indicating a relatively homogeneous stellar population in the central regions. A trend towards bluer colours is observed out to ~ 170 arcsec (~ 6.5 kpc), suggesting the presence of a radial stellar population gradient, with younger and/or

lower-metallicity stars populating the outer disc (e.g. Tortora et al. 2010).

Beyond this radius, the colour gradients exhibit an inversion: the $g-r$ and $g-i$ colours become redder, while the $r-i$ trends towards bluer values, although with larger uncertainties. The $g-r$ and $g-i$ behaviour might indicate the emergence of distinct stellar components in the outskirts, such as faint tidal debris, stellar halos, or LSB streams (see Sect. 5), where photometric uncertainties increase due to the dominance of background fluctuations. In this regime, redder $g-r$ and $g-i$ colours can be interpreted as the contribution from older and/or more metal-rich stellar populations, while the decline in $r-i$ colour may require particular caution.

Interestingly, the colour inversion observed in the outer regions—where $g-r$ becomes redder and $r-i$ bluer—and, in particular, the significant bump at ~ 220 arcsec in the r band, may indicate enhanced r -band emission. Therefore, a contribution from diffuse $H\alpha+[NII]$ emission cannot be excluded—particularly in the presence of extraplanar ionized gas—even if it is difficult to distinguish in an almost face-on galaxy such as IC 5332. Moreover, the reddening of the $g-r$ and $g-i$ colour gradients starts at about 170 arcsec, which—as discussed in Sect. 5—corresponds to the radial distance where the two stellar streams detected in the outskirts of IC 5332 begin, possibly reflecting the emergence of a distinct stellar population associated with accreted material.

To assess whether the colour behaviour in the radial range $170 \lesssim R \lesssim 400$ arcsec could be affected by scattered light from bright foreground stars, we performed an angular sector analysis of the SB and colour profiles. The galaxy was divided into three independent sectors, one of which (-60° , 60°), anti-clockwise with respect to the horizontal, completely includes the region where the bright stars are located. The resulting colour profiles are shown in Fig. E.1. We find that, within the radial range of interest, the sector encompassing the region potentially affected by scattered stellar light shows no significant deviation with respect to the others. This consistency indicates that the measured colour properties in the outer regions are not significantly affected by stellar contamination. A detailed description of this test is provided in App. E.

4.2. Structural parameters from the growth curve and colour gradients

The growth curve analysis provides, for such extended galaxies, a model-independent approach for estimating the galaxy effective radii (R_e). To obtain the growth curve, we integrated the SB profiles up to the radial extension of each band, reported in Sect. 4.1 and in Fig. 3². Once the R_e values were derived for each band, we computed the integrated magnitudes and colours of IC 5332 within this radius. The resulting effective radii are $R_{e,g} = 108$ arcsec (4.1 kpc), $R_{e,r} = 127$ arcsec (4.8 kpc), and $R_{e,i} = 104$ arcsec (3.9 kpc). They indicate that in the r band, the galaxy is less concentrated than in the g and i bands. This could also be an effect of the enhanced emission in the r band seen both in the bump at 220 arcsec and in the outer regions. Therefore, these values show an increase from the g to r bands and then a decrease in the i band, indicating a non-monotonic trend with wavelength, contrasting with the average trends found in observations (Vulcani et al. 2014) and simulations (Baes et al.

2024) of late-type galaxies. This suggests a more intricate interplay among stellar population parameters, dust, and the effect of emission lines. When compared with a population of local late-type galaxies selected from the NYU-VAGC catalogue (Blanton et al. 2005), according to the selection criteria on Sérsic index and concentration adopted in Tortora et al. (2010) the ratios of the effective radii in the different bands appear to be broadly consistent with the bulk of the local galaxy population. To be more specific, we find $R_{e,g}/R_{e,r} = 0.86$ and $R_{e,g}/R_{e,i} = 1.04$, where the former is smaller than the median value reported in the NYU-VAGC catalogue at similar stellar masses, while the latter is consistent with the corresponding median (i.e. $R_{e,g}/R_{e,r} = 1.02 \pm 0.07$ and $R_{e,g}/R_{e,i} = 1.03 \pm 0.10$).

Because the ratios of the R_e provide only partial information, we follow Tortora et al. (2010) and calculate the colour gradient between $0.1 \times R_{e,r}$ and $R_{e,r}$. Studying the correlations between colour and stellar population gradients and galaxy mass is known to provide deeper constraints on galaxy formation and evolutionary processes (e.g. Tortora et al. 2010, 2011b,a, 2013; Goddard et al. 2017; Liao & Cooper 2023). We adopt the $g-i$ colour for consistency with Tortora et al. (2010) and to exclude the r band, which can be affected by $H\alpha-[NII]$ emission, as discussed previously. The colour profile is fitted with the relation $g-i = c + m \times \log(R/R_{e,r})$, where m is the colour gradient. We find a gradient of $m = -0.32$ dex, which is steeper than the median value for LTGs of similar stellar mass ($\sim 1-3 \times 10^9 M_\odot$), reported by Tortora et al. (2010) as ~ -0.15 dex.

To interpret these colour gradients, we note that Groves et al. (2023b) report an internal dust extinction for IC 5332 decreasing from $A_V = 0.40$ mag at the centre to $A_V = 0.25$ mag at one R_e . Assuming a linear variation in extinction between these radii, we derived the corresponding corrections in the g and i bands and applied them to the colour profiles. After removing the dust contribution, the resulting gradient is $m = -0.24$ dex, which is consistent with being driven by stellar metallicity variations (Tortora et al. 2010). A direct comparison with the results of Tortora et al. (2010) is not possible, since an analogous dust correction cannot be applied to their sample. Nevertheless, a metallicity-driven gradient, with the metallicity radially decreasing, is in line with the steep gas-phase metallicity gradients of IC 5332 measured in Groves et al. (2023b), which are among the steepest in the PHANGS sample.

Steep metallicity gradients in massive galaxies can be largely explained within the framework of the monolithic collapse scenario, which is further enhanced by the contributions of stellar and supernova-driven outflows. They are expected when stars form during strong dissipative (monolithic) collapses in the deep potential wells of galaxy cores, where the gas is more efficiently retained. This results in more efficient SF and chemical enrichment in the central regions compared to the outskirts, thereby producing negative metallicity gradients (e.g. Larson 1974; Kobayashi 2004). In addition, the delayed onset of supernova-driven winds, which provide a further supply of metals to the central regions, can act to reinforce the steepness of these gradients (e.g. Pipino et al. 2008). Since the depth of the gravitational potential regulates these processes and thus correlates with galaxy mass, massive galaxies are expected to host steeper metallicity gradients than lower-mass ones. The sharp colour (and presumably metallicity) gradients observed in IC 5332 can be naturally explained within this scenario.

The total magnitudes measured out to the outermost radius reached by the photometric profiles are: $m_g = 10.68$ mag, $m_r = 10.29$ mag, and $m_i = 10.19$ mag. As expected, these values show a progressive brightening from the g to the i band. We also

² Although some residual oversubtraction is visible in the g band, the growth curve flattens out towards a plateau, confirming that the results are only marginally affected by this issue.

computed the integrated magnitudes within the r -band R_e . These values are $m_g = 11.29$ mag, $m_r = 11.04$ mag, and $m_i = 10.78$ mag, which also show a consistent brightening towards redder bands.

We also estimated the isophotal (or Holmberg) radius corresponding to an SB level of 26.5 mag arcsec $^{-2}$, obtaining values of 294, 344, and 350 arcsec in g , r , and i , respectively, which are within the maximum radial extent reached by the SB profiles (see Sect. 4.1). Comparing with the SB profiles, this confirms that light is detected well beyond the 26.5 mag arcsec $^{-2}$ isophote, extending to radii of about twice the Holmberg radius. This highlights the importance of deep photometry in capturing the extended LSB emission in spiral galaxies, which may significantly affect the inferred stellar luminosity and mass budget (see Sect. 4.5), especially when a substantial fraction of the light lies beyond the R_e and well past conventional isophotal radii. From these values, we derived both the total integrated colours and those computed within the R_e (corrected only for foreground extinction). The total colours are $g-r = 0.39$ mag and $r-i = 0.10$ mag, indicating an overall blue stellar population.

The colours measured within the R_e are $(g-r)_{R_e} = 0.25$ mag and $(r-i)_{R_e} = 0.26$ mag, showing that the inner regions are slightly bluer in $g-r$ but redder in $r-i$ compared to the global values. These differences are clearly driven by the opposite behaviour of $g-r$ and $r-i$ in the outer regions. The total integrated colours derived from the growth curve method are fully consistent with those expected for less massive spiral galaxies. These values fall within the typical ranges observed for Sc–Sd galaxies, which generally show $g-r$ in a range 0.3–0.5 mag and $r-i$ between 0.1 and 0.3 mag (e.g. Strateva et al. 2001; Baldry et al. 2004). Such colours reflect the composite nature of the stellar populations in these systems: the relatively blue $g-r$ colour indicates ongoing SF and the presence of young stellar populations in the disc, while the modest $r-i$ colour suggests a moderate contribution from more evolved stars, particularly in the inner regions. Overall, R_e , magnitudes, and colours show systematic trends with wavelength, consistent with a stellar population increasingly dominated by old stars towards redder bands.

4.3. Sérsic decomposition

In this section we model the SB profile of the galaxy in the g , r , and i bands. The analysis was performed on azimuthally averaged surface-brightness profiles extracted using isophotes whose ellipticity and position angle were allowed to vary with radius, in order to accurately trace the intrinsic geometry of the galaxy and possible physical asymmetries. At each radius, the azimuthal averaging provides a robust estimate of the mean light distribution, which is well suited for one-dimensional structural modelling.

As shown in Appendix C, a single-component Sérsic model fails to provide a satisfactory fit to the galaxy’s outer regions, which require an additional exponential component, even though these outer parts contribute only marginally to the total stellar mass. Therefore, because a single Sérsic component does not adequately reproduce the full SB profile in any of the three bands, particularly in the outer regions, we introduced a second component.

The Sérsic decomposition was intentionally performed in one dimension, as the primary goal of this analysis is to characterize the radial structural components of IC 5332 as a function of galactocentric distance, rather than to perform a full 2D morphological decomposition of the galaxy. The SB profiles of IC 5332 in the g , r , and i bands were therefore modelled with a 1D two-component Sérsic decomposition using our Python

code. The results are presented in Fig. 4. Parameter uncertainties were estimated as the square roots of the diagonal elements of the covariance matrix provided by the fitting algorithm `curve_fit` within the Python library `scipy.optimize`. This matrix was computed from the inverse of the Hessian of the χ^2 function, and the resulting values represent the 1σ confidence intervals under the assumption of Gaussian, independent errors. The fitting was performed using inverse-variance weighting, where the uncertainties associated with each radial bin include both photon noise and large-scale background fluctuations, as estimated following the procedure described in App. A. The goodness of fit was quantified using the reduced χ^2 and the sum of the absolute residuals, allowing a direct comparison to be made between single- and two-component Sérsic models. In all bands, the two-component Sérsic model provides a statistically better description of the data, yielding lower reduced χ^2 values and the sum of the absolute residuals than the single-component fit (see App. D and C for details). Each profile was fitted with an inner (red) and an outer (blue) Sérsic component, highlighting the radial structural variation as a function of wavelength. The inner component, typically associated with a central stellar concentration or an inner disc, shows a clear trend: the effective SB becomes progressively brighter from $\mu_{e1,g} = 22.60 \pm 0.11$ to $\mu_{e1,r} = 22.37 \pm 0.06$ and $\mu_{e1,i} = 21.86 \pm 0.07$ mag arcsec $^{-2}$. Simultaneously, the effective radius decreases from $R_{e1,g} = 12.87 \pm 0.6$ arcsec to $R_{e1,r} = 10.65 \pm 0.5$ arcsec and $R_{e1,i} = 10.35 \pm 0.4$ arcsec, while the Sérsic index n_1 evolves from $n_{1,g} = 1.17 \pm 0.06$ to $n_{1,r} = 1.06 \pm 0.03$ and $n_{1,i} = 0.99 \pm 0.05$. This behaviour suggests that the inner structure becomes more compact and dominant at longer wavelengths, consistent with a central concentration of older stellar populations. The outer Sérsic component, which likely traces the extended disc, also exhibits systematic variations. The effective SB remains nearly constant in g and r ($\mu_{e2,g} = 23.80 \pm 0.04$ and $\mu_{e2,r} = 23.77 \pm 0.06$ mag arcsec $^{-2}$) and becomes brighter in i ($\mu_{e2,i} = 23.30 \pm 0.06$ mag arcsec $^{-2}$). The effective radius shows some fluctuations, with $R_{e2,g} = 114.85 \pm 3$ arcsec, $R_{e2,r} = 126.59 \pm 4$ arcsec, and $R_{e2,i} = 110.34 \pm 4$ arcsec. However, the Sérsic index shows a marked increase from $n_{2,g} = 1.06 \pm 0.06$ to $n_{2,r} = 1.47 \pm 0.1$ and $n_{2,i} = 1.37 \pm 0.1$. This suggests that the outer profile becomes more centrally concentrated at longer wavelengths, reflecting a growing contribution from older stellar populations dominating the light in the r and i bands. The transition radius R_{tr} , defined as the point where the two components have equal SB, also varies significantly: it decreases from $R_{tr,g} = 9.11$ arcsec to $R_{tr,r} = 3.98$ arcsec, and reaches $R_{tr,i} = 5.20$ arcsec. The reduced R_{tr} in the redder bands compared to the g band indicates that the outer disc component begins to dominate the light distribution much closer to the centre at longer wavelengths, while the larger $R_{tr,g}$ reflects the wider dominance of the younger stellar population in the central regions.

Finally, the best-fit model (violet curve) in each band successfully reproduces the observed light distribution across the full radial range, confirming the presence of two structural components: the inner component, associated with a more compact central stellar structure, or inner disc, formed through secular processes such as bar-driven inflows or early gas collapse, in conjunction with supernovae feedback (driving the negative colour gradients discussed in Sect. 4.2) and an outer Sérsic component, which likely traces an extended stellar disc that could be a result of radial migration, accretion of material, or minor interactions. Altogether, these findings reinforce the importance of multi-band surface photometry in tracing stellar popu-

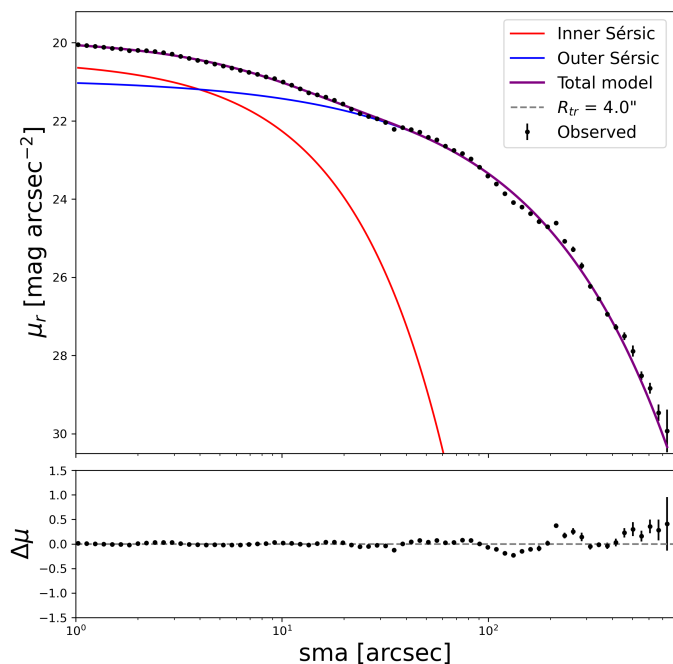


Fig. 4. Sérsic decomposition of IC 5332. Top panel: Two-component model of the azimuthally averaged SB profiles of IC 5332 in the r band. The red line indicates the inner Sérsic component, while the blue one corresponds to the outer regions. The purple line represents the sum of both components as the best fit for the observed light profile. The vertical dashed black line shows the estimated value for R_{tr} . Bottom panel: Residuals of the fit, $\Delta\mu = \mu_{obs} - \mu_{model}$.

lation gradients and disentangling the structural components of disc galaxies, especially considering the observed dependence of the galaxy’s structural parameters on the wavelength, pointing out that the observed light distribution is not solely shaped by structural morphology but is strongly modulated by the age and metallicity distributions of the stellar content.

4.4. Tracing the morphology

The PA and ϵ radial profiles, measured in the g (blue), r (green), and i (red) bands, are shown in Fig. 5, in the left and right panels, respectively. In all three bands, the inner regions display a relatively smooth behaviour for the PA and ϵ values, consistent with a nearly face-on spiral disc morphology. At intermediate radii (from ~ 12 to ~ 170 arcsec), the PA profiles exhibit a series of abrupt oscillations, evident in all three bands. These fluctuations are likely associated with the presence of spiral arms, whose asymmetric and winding structures locally distort the isophotes, leading to local twists in the isophotes that propagate into the PA measurements. The ϵ profiles in this radial range remain moderately low and stable, showing a gentle decline with radius, further confirming that the main disc is nearly circular in projection. In particular, considering radii outside the central bulge, we find that the ϵ are mostly below 0.2, corresponding to a circular disc with an inclination of $\lesssim 35^\circ$, consistent with the values reported in Table 1 and in the literature. However, at larger radii, particularly beyond ~ 170 arcsec, both the PA and ϵ undergo significant changes. The PA tends to stabilize at high values (~ 170 – 180 deg), forming a plateau, while the ϵ starts to rise, reaching values as high as at least $\epsilon \sim 0.7$ in all bands. This behaviour marks a transition in the photometric morphology, where the isophotes are no longer dominated by the disc but instead by more asym-

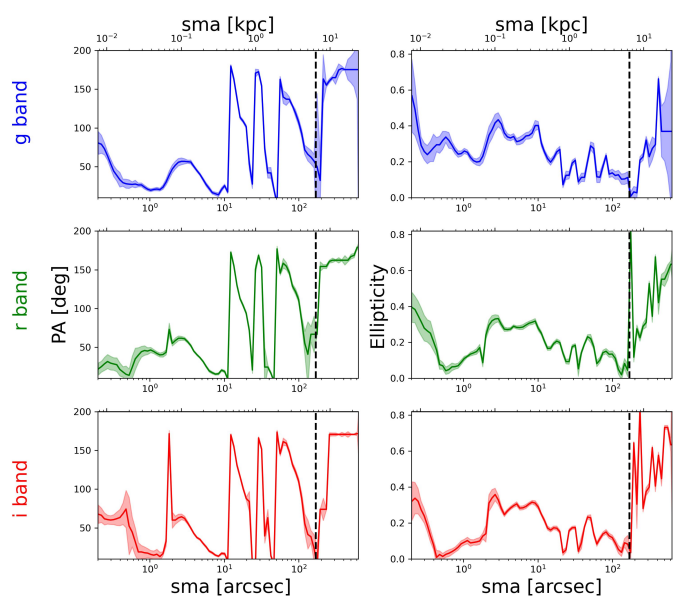


Fig. 5. Radial profiles of position angle (left column) and ellipticity, defined as $\epsilon = 1 - (b/a)$ (right column) as a function of the semi-major axis (in arcsec) for the galaxy IC 5332, in the g (top), r (middle), and i (bottom) bands. Shaded regions indicate the uncertainties. The vertical dashed line marks a transition where stellar streams or asymmetric LSB structures begin to dominate the isophotal shape and orientation.

metric and elongated outer features, such as stellar streams or LSB substructures, which could alter both the orientation and the shape of the isophotes. This coherent change in both PA and ϵ across the three bands, despite slight differences in the amplitude of fluctuations, strongly supports the scenario in which the outer isophotes are dominated by tidal material, likely of external origin. Such features are characteristic of ongoing or past accretion events, and their photometric imprint is visible both in the radial profiles and in the morphological deviations from the inner, symmetric, star-forming disc-dominated structure.

4.5. Mass and mass density profiles

From the available optical VST-SMASH photometry, it is not possible to constrain the stellar population parameters, but simple prescriptions can be used to estimate the stellar mass profile. We derive the stellar mass surface density and the corresponding integrated mass profile by converting the observed $g-r$ and $g-i$ colour profiles into a stellar M/L using empirical M/L -colour relations from the literature, which are expected to depend only mildly on stellar population parameters and dust extinction.

To estimate the r -band M/L_r in each radial bin, we adopted five different M/L_r -colour relations, all expressed in the form

$$\log M/L_r = a_{r,col} + b_{r,col} \times col, \quad (1)$$

We used five different M/L_r -colour relations: the one calibrated by Zibetti et al. (2009, hereafter Z09), the two relations from Roediger & Courteau (2015, RC15), based on different stellar population synthesis models, and the two from Into & Portinari (2013, IP13). The corresponding coefficients, together with details on the adopted IMF and model prescriptions, are reported in Table 2. To exploit the information from both colour indices while keeping the analysis as simple as pos-

Table 2. Coefficients for the adopted $M/L_r - (g - r)$ and $M/L_r - (g - i)$ relations.

Reference	$g - r$		$g - i$		IMF / Model details
	$a_{r,g-r}$	$b_{r,g-r}$	$a_{r,g-i}$	$b_{r,g-i}$	
Z09	-0.84	1.654	-0.977	1.157	Chabrier IMF, Marigo TP-AGB prescription
RC15 (BC03)	-0.792	1.629	-0.861	1.110	Chabrier IMF, BC03 with Girardi TP-AGB
RC15 (FSPS)	-0.647	1.497	-0.644	0.973	Chabrier IMF, FSPS with Marigo TP-AGB
IP13 (exp. SFH)	-0.593	1.373	-0.652	1.005	Kroupa IMF ⁽¹⁾ , exponential SFH models
IP13 (disc templates)	-0.663	1.530	-0.702	1.098	Kroupa IMF ⁽¹⁾ , disc galaxy templates

⁽¹⁾ These models assume a Kroupa IMF from [Rebolo et al. \(1998\)](#). To convert these to a Chabrier-equivalent IMF, we subtract 0.05 dex from the resulting $\log M/L_r$ values ([Tortora et al. 2009](#)).

sible, we adopted the mean M/L_r value obtained by averaging the $M/L_r - (g - r)$ and $M/L_r - (g - i)$ estimates.

In each radial bin, we calculated the absolute r -band luminosity density by combining the galaxy's distance modulus, the observed SB in the r band, and the solar r -band absolute magnitude $M_{\odot,r} = 4.65$ mag. The stellar mass surface density is then obtained by multiplying the luminosity density by the corresponding M/L_r value. Integration of the mass density profile yields the projected cumulative mass profile.

Figure 6 shows the resulting mass density and integrated mass profiles for all five M/L_r -colour prescriptions. These models span a range of assumptions regarding stellar population synthesis. The differences among them result in an average offset between the extreme models of ~ 0.18 dex in $\log M/L$, corresponding to a scatter of approximately 0.09 dex. The cumulative total stellar mass of IC 5332 is in the range of $\log M_{\star}/M_{\odot} \sim 9.42 - 9.54$. Following the $g - r$ and $g - i$ colour profiles, the M/L remains nearly constant out to ~ 150 arcsec (i.e. ~ 5.63 kpc), beyond which it increases, reaching a peak around $R \sim 200$ arcsec (i.e. ~ 7.5 kpc). This complex radial trend in M/L significantly affects the mass density profile, which begins to rise beyond ~ 150 arcsec (i.e. ~ 6 kpc), before reaching a maximum and then declining again. As a result, the cumulative stellar mass profile exhibits a flattening at $R \sim 6$ kpc, reaching a value of the integrated stellar mass (in M_{\star}) in the range 8.90 – 9.10 dex, followed by a secondary rise driven by the M/L bump, and finally tends to saturate at $R \gtrsim 12$ kpc, up to $\log M_{\star}/M_{\odot} \sim 9.3 - 9.4$ dex. This complex behaviour coincides with the region where a distinct stream-like feature is observed. We explore the nature of this structure in Sect. 5. Finally, we also derived an independent stellar mass estimate based on integrated colours up to the outermost radii. We find total masses that are consistent with those derived by integrating the mass profile. These estimates are slightly larger than the value reported in Table 1, which is based on a scaled Salpeter IMF.³ Our mass estimates are also smaller than the value of $7.6 \times 10^9 M_{\odot}$ reported by [Cook et al. \(2014\)](#), obtained from the $3.6 \mu\text{m}$ emission and assuming $M/L_{3.6\mu\text{m}} = 0.5$. This comparison confirms that such a mass estimate could be overestimated, due to their assumption of a constant M/L across their entire galaxy population ([Hunt et al. 2019](#)).

5. The western streams

The results in Sect. 4 provide a consistent multi-wavelength picture of IC 5332, revealing a complex structure shaped by both secular evolution and external accretion. The azimuthally averaged SB profiles, reaching $\mu_g \sim 29.1$, $\mu_r \sim 29.9$, and $\mu_i \sim 28.9$

³ The scaled Salpeter IMF of [Bell & de Jong \(2001\)](#) yields only slightly larger values than a Kroupa IMF.

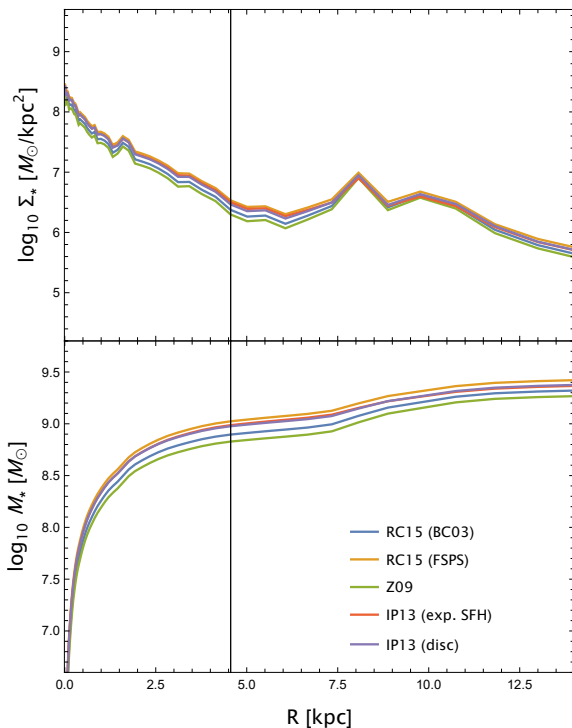


Fig. 6. Surface mass density (top panel) and cumulative stellar mass (bottom panel) as a function of the radius in kiloparsecs. The different colours correspond to different stellar M/L -colour relations from the following papers: [Roediger & Courteau \(2015\)](#), using the BC03 and FSPS models), [Zibetti et al. \(2009\)](#), and [Into & Portinari \(2013\)](#) for the exponential SFH and disc models. The r -band effective radius from the growth curve is shown as a vertical black line.

mag arcsec⁻², show extended LSB outskirts deviating from a single exponential decline. A two-component Sérsic model is required to reproduce the profiles, with an extended outer component dominating in the g and r bands.

The wavelength-dependent structural parameters indicate older, metal-rich stellar populations in the central regions and a more diffuse, evolved component in the outskirts, consistent with an accreted stellar halo. The colour profiles display a negative inner gradient that inverts beyond ~ 170 arcsec, where $g - r$ and $g - i$ become redder—a signature of distinct stellar populations or accreted debris. Similar trends have been associated with external accretion or disc restructuring (e.g. [Bakos et al. 2008](#); [Laine et al. 2016](#); [Roediger et al. 2011](#)). The converse behaviour of $r - i$, which becomes bluer at the same radii, remains unclear, although it may be driven by enhanced $H\alpha$ emission.

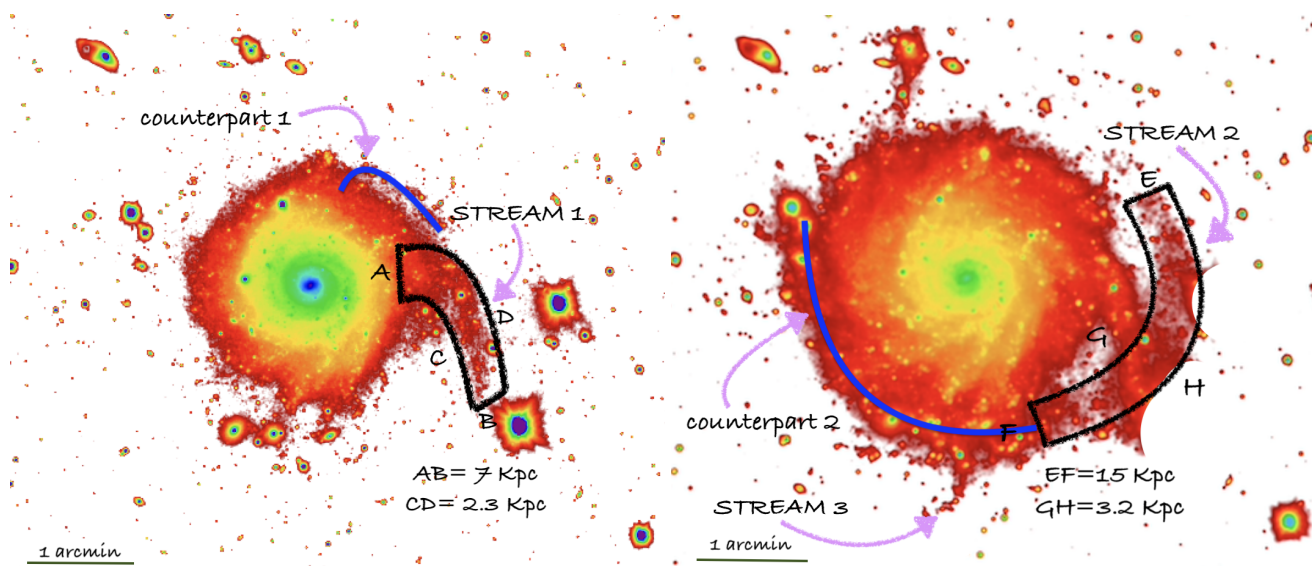


Fig. 7. Deep VST image in the g band (in false colour scale) showing the outskirts of IC 5332 with annotated stellar streams. North is up and east is to the left. Left panel: Stream 1, emerging to the west of the galaxy at a radial distance of ~ 170 arcsec, is highlighted by the black polygon. Right panel: Stream 2 and Stream 3, located to the south-west and west of the galaxy, respectively. Both images were smoothed by using a Gaussian kernel with $\sigma = 5$ pixels. In both panels, with blue lines are indicated the regions corresponding to the counterparts.

At comparable radii, both PA and ϵ profiles change shape, suggesting that the outer isophotes are shaped by the geometry of accreted material rather than by the main stellar disc. The stellar mass surface density profiles reinforce this scenario, showing that a significant fraction of the mass lies in the outskirts, hosting old or metal-rich stars or with stronger $H\alpha$ -[NII] emission. All these indicators point to the presence of an extended, accreted stellar component in IC 5332, consistent with the detection of several LSB streams in its outer regions (see Figs. 2 and 7), clearly visible in the deep VST imaging. Similar features have been observed in other nearby galaxies, confirming that such stellar streams are a common signature of past accretion events (e.g. Sola et al. 2022; Pippert et al. 2025).

In particular, in the western direction, two major features can be identified. In the left panel, at a radial distance of ~ 170 arcsec (i.e. ~ 6.4 kpc, $1.4 R_{e,r}$), the first stellar stream begins to emerge prominently, and we highlight it as ‘Stream 1’. It seems to resemble a spiral arm, since it follows a similar orientation to the other arms, but with a quite different pitch angle, which would suggest some interaction. Stream 1 appears brighter towards the galaxy, and, as shown in the left panel of Fig. 7, it is clearly disconnected from the bright star located at its southern end. This supports the conclusion that the feature is not an imaging artefact caused by scattered light from the star. Its projected length is approximately 7 kpc, with an average width of about 2.3 kpc. A second feature, i.e. ‘Stream 2’, is shown in the right panel. It is located at a slightly larger distance from the galactic centre, at a radial distance of ~ 220 arcsec (i.e. ~ 7.6 kpc, i.e. $1.7 R_{e,r}$), which is the distance at which the bump in the r -band SB profile emerges; it is instead a completely disconnected feature, which crosses the Stream 1, and does not follow the spiral arms pattern. It exhibits an arc-like shape oriented towards the centre of IC 5332, which also makes it easily distinguishable from a possible stellar artefact in its vicinity. It extends over a projected length of 15 kpc and has an average width of about 3.2 kpc. In addition to these two main streams, the galaxy is characterized by smaller in size streams, for example ‘Stream 3’, which are barely detectable due to their very LSB. These outer features are morphologically distinct, then suggesting a tidal ori-

gin, possibly the debris from a disrupted satellite galaxy (e.g. Laine et al. 2016). To confirm the distinct nature of Stream 1 and Stream 2, we computed the associated extinction-corrected average integrated colours, accounting also for the residual background fluctuations, and compared them with those of regions (named ‘counterpart 1’ and ‘counterpart 2’, respectively) located at the same radial distances from the centre of the galaxy, as shown in Fig. 7. As previously mentioned, we focus solely on the $g-r$ colour, which is the most informative for our purposes. We find that Stream 2 and its Counterpart 2 exhibit $g-r$ values in the range 0.5–0.6 mag and 0.2–0.3 mag, respectively. Similarly, Stream 1 shows a $g-r$ colour in the range 0.3–0.4 mag, whereas Counterpart 1 is bluer, with $g-r = 0.1$ –0.2 mag. The presence of such red colours in the two streams is also supported by the rising radial profile measured within a wedge oriented towards the west. For both streams, their average colours are significantly redder than those of their respective counterparts, as expected in the case of accreted material surrounding a galaxy with the morphology of IC 5332. In particular, the average colour of Stream 2 is broadly consistent with the typical $g-r$ values reported for dwarf and LSB galaxies (Marleau et al. 2021; La Marca et al. 2022; Venhola et al. 2022; Zaritsky et al. 2022). This agreement suggests a possible scenario in which the stream’s origin is associated with the complete or partial disruption of such an object, although other interpretations cannot be entirely excluded based on colour data alone. The progenitor might still be present but obscured from view by one of the bright foreground stars located in that region. In the case of Counterpart 1, it is not surprising that it appears bluer than Stream 1, given that it is located in a spiral arm of the galaxy. All the findings listed above support the idea that IC 5332 has undergone external accretion events that contributed to the buildup of its outer disc. Such processes are in line with the theoretical expectations for the inside-out growth of spiral galaxies, where the central regions form early and evolve through secular processes, while the outer structures are gradually assembled via accretion of satellites and diffuse material (e.g. Pillepich et al. 2015; Rodriguez-Gomez et al. 2016; Grand et al. 2017). To further exclude that the detected streams are artefacts caused by scattered light from nearby bright stars, we

compared our VST images with independent optical data from the DESI Legacy Surveys DR10. Both streams are clearly detected also in the DESI data, confirming their physical nature. This comparison is discussed in App. F.

6. Final remarks

The VST-SMASH survey (Tortora et al. 2024) has been designed to detect LSB features in the outskirts of a distance-limited sample of nearby late-type galaxies, within a distance of $D < 11$ Mpc. This is a largely unexplored regime in extragalactic astronomy, mainly due to the observational challenges posed by the detection of diffuse structures at very faint levels. Such a goal requires multi-band, deep, and wide-field imaging capabilities, which are provided by VST in the optical g , r , and i bands. Notably, the VST-SMASH survey also offers the unique opportunity to serve as the optical counterpart to the *Euclid* Wide Survey footprint, providing complementary ground-based data for future multi-wavelength studies (Euclid Collaboration et al. 2022; Hunt et al. 2025).

In this first presentation paper, we focused on the galaxy IC 5332 to illustrate the depth, quality, and scientific potential of the VST-SMASH dataset. We reach 1σ limiting SBs, measured within an aperture of 100 arcsec^2 , of ~ 30.7 , 30.5 , and $29.5 \text{ mag arcsec}^{-2}$, with PSF FWHM values of ~ 0.9 , 1.1 , and 0.8 arcsec in the g , r , and i bands, respectively. These results confirm that the survey achieves the required depths, reaching in the g and r bands levels comparable to those of the *Euclid* Wide Survey (Hunt et al. 2025). Through detailed surface photometry, we derived SB and colour profiles down to unprecedented depths, revealing structural components and gradients not detectable in shallower surveys. We performed double-component Sérsic decompositions in all bands, examined the radial variation in structural parameters, and investigated stellar population gradients through both colour and mass profiles. Crucially, we also identified and characterized faint stellar streams in the galaxy's outskirts, interpreting them as evidence of ongoing or past accretion events. While a single-component model fails to capture the full photometric structure, IC 5332 is well fitted by a double-component Sérsic profile. The inner component is consistent with previous literature results, while the more extended component appears larger in the r band. The galaxy is characterized by a negative $g - i$ colour gradient within one effective radius, which, even after accounting for internal extinction, is somewhat steeper than the average for galaxies of a similar mass (Tortora et al. 2010), and in agreement with the steep gas-phase metallicity gradients reported by Groves et al. (2023b). These findings are consistent with a dissipative monolithic collapse scenario, reinforced by supernova-driven winds. In the outer regions, the scenario is more complex: distorted spiral arms and stellar streams (e.g. Streams 1 and 2 in Fig. 7) complicate the structure. These streams present integrated colours consistent with disrupted dwarf and/or LSB satellites. When using azimuthally averaged colour profiles, we also observe opposite trends in the $g - r$ and $r - i$ colour. Their nature remains puzzling; we suggest that this behaviour may be driven by a stronger contribution from emission lines in the r -band filter, an interpretation that will require further investigation.

Although this study focuses on a single galaxy, it clearly demonstrates the exceptional potential of the VST-SMASH dataset to uncover and characterize faint features in the outskirts of spiral galaxies. With this work, we lay the groundwork for future analyses of the remaining targets in our survey, opening a new window into the LSB Universe in the nearby cosmos.

In future studies, we will extend this analysis to the full VST-SMASH sample, aiming to perform a systematic morphological classification of stellar streams and diffuse substructures, search for dwarf galaxies and globular clusters, investigate their photometric properties, and quantify their occurrence rates. By combining this information with ancillary multi-wavelength data, including space-based *Euclid* imaging, and comparisons to predictions from cosmological simulations, we aim to place robust constraints on the role of hierarchical accretion in shaping the outskirts of nearby spiral galaxies.

References

- Akhlaghi, M. & Ichikawa, T. 2015, *ApJS*, 220, 1
 Annibali, F., Beccari, G., Bellazzini, M., et al. 2020, *MNRAS*, 491, 5101
 Arnaboldi, M., Capaccioli, M., Mancini, D., et al. 1998, *The Messenger*, 93, 30
 Baes, M., Mosenkov, A., Kelly, R., et al. 2024, *A&A*, 683, A182
 Bakos, J., Trujillo, I., & Pohlen, M. 2008, *ApJ*, 683, L103
 Baldry, I. K., Glazebrook, K., Brinkmann, J., et al. 2004, *ApJ*, 600, 681
 Bell, E. F. & de Jong, R. S. 2001, *ApJ*, 550, 212
 Bell, E. F., Zucker, D. B., Belokurov, V., et al. 2008, *ApJ*, 680, 295
 Belokurov, V., Erkal, D., Deason, A. J., et al. 2017, *MNRAS*, 466, 4711
 Bílek, M., Duc, P.-A., Cuillandre, J.-C., et al. 2020, *MNRAS*, 498, 2138
 Blanton, M. R., Schlegel, D. J., Strauss, M. A., et al. 2005, *AJ*, 129, 2562
 Blumenthal, G. R., Faber, S. M., Primack, J. R., & Rees, M. J. 1984, *Nature*, 311, 517
 Brough, S., Ahad, S. L., Bahé, Y. M., et al. 2024, *MNRAS*, 528, 771
 Capaccioli, M., Spavone, M., Grado, A., et al. 2015, *A&A*, 581, A10
 Carlsten, S. G., Greene, J. E., Beaton, R. L., & Greco, J. P. 2022, *ApJ*, 927, 44
 Conselice, C. J., Bluck, A. F. L., Mortlock, A., Palamara, D., & Benson, A. J. 2014, *MNRAS*, 444, 1125
 Cook, D. O., Dale, D. A., Johnson, B. D., et al. 2014, *MNRAS*, 445, 899
 Cooper, A. P., Cole, S., Frenk, C. S., et al. 2010, *MNRAS*, 406, 744
 Duarte-Cabral, A. & Dobbs, C. L. 2017, *MNRAS*, 470, 4261
 Euclid Collaboration, Scaramella, R., Amiaux, J., et al. 2022, *A&A*, 662, A112
 Goddard, D., Thomas, D., Maraston, C., et al. 2017, *MNRAS*, 465, 688
 Grand, R. J. J., Gómez, F. A., Marinacci, F., et al. 2017, *MNRAS*, 467, 179
 Groves, B., Kreckel, K., Santoro, F., et al. 2023a, *MNRAS*, 520, 4902
 Groves, B., Kreckel, K., Santoro, F., et al. 2023b, *MNRAS*, 520, 4902
 Hassani, H., Rosolowsky, E., Koch, E. W., et al. 2024, *ApJS*, 271, 2
 Hunt, L. K., Annibali, F., Cuillandre, J. C., et al. 2025, *A&A*, 697, A9
 Hunt, L. K., De Looze, I., Boquien, M., et al. 2019, *A&A*, 621, A51
 Hunt, L. K., Tortora, C., Ginolfi, M., & Schneider, R. 2020, *A&A*, 643, A180
 Into, T. & Portinari, L. 2013, *MNRAS*, 430, 2715
 Iodice, E., Capaccioli, M., Grado, A., et al. 2016, *ApJ*, 820, 42
 Iodice, E., Spavone, M., Cantiello, M., et al. 2017, *ApJ*, 851, 75
 Jarrett, T. H., Chester, T., Cutri, R., Schneider, S. E., & Huchra, J. P. 2003, *AJ*, 125, 525
 Johnston, K. V., Sackett, P. D., & Bullock, J. S. 2001, *ApJ*, 557, 137
 Karachentsev, I. D., Makarov, D. I., & Kaisina, E. I. 2013, *AJ*, 145, 101
 Kobayashi, C. 2004, *MNRAS*, 347, 740
 Kuijken, K., Bender, R., Cappellaro, E., et al. 2002, *The Messenger*, 110, 15
 La Marca, A., Peletier, R., Iodice, E., et al. 2022, *A&A*, 659, A92
 Laine, J., Laurikainen, E., & Salo, H. 2016, *A&A*, 596, A25
 Larson, R. B. 1974, *MNRAS*, 166, 585
 Lee, H., Skillman, E. D., & Venn, K. A. 2006, *ApJ*, 642, 813
 Lee, J. C., Gil de Paz, A., Tremonti, C., et al. 2009, *ApJ*, 706, 599
 Lee, J. C., Sandstrom, K. M., Leroy, A. K., et al. 2023, *ApJ*, 944, L17
 Leroy, A. K., Hughes, A., Liu, D., et al. 2021, *ApJS*, 255, 19
 Leroy, A. K., Walter, F., Sandstrom, K., et al. 2013, *AJ*, 146, 19
 Liao, L.-W. & Cooper, A. P. 2023, *MNRAS*, 518, 3999
 Marleau, F. R., Habas, R., Poulain, M., et al. 2021, *A&A*, 654, A105
 Martínez-Delgado, D., Gabany, R. J., Crawford, K., et al. 2010, *AJ*, 140, 962
 McFarland, J. P., Helmich, E. M., & Valentijn, E. A. 2013, *Experimental Astronomy*, 35, 79
 Meidt, S. E. & van der Wel, A. 2024, *ApJ*, 966, 62
 Meyer, M. J., Zwaan, M. A., Webster, R. L., et al. 2004, *MNRAS*, 350, 1195
 Montes, M. 2022, *Nature Astronomy*, 6, 308
 Nibauer, J., Bonaca, A., Spergel, D. N., et al. 2025, *ApJ*, 983, 88
 Pillepich, A., Madau, P., & Mayer, L. 2015, *ApJ*, 799, 184
 Pipino, A., D'Ercole, A., & Matteucci, F. 2008, *A&A*, 484, 679
 Pippert, J.-N., Kluge, M., & Bender, R. 2025, *ApJ*, 980, 244
 Pisano, D. J., Barnes, D. G., Staveley-Smith, L., et al. 2011, *ApJS*, 197, 28
 Popesso, P., Concas, A., Cresci, G., et al. 2023, *MNRAS*, 519, 1526
 Radburn-Smith, D. J., de Jong, R. S., Seth, A. C., et al. 2011, *ApJS*, 195, 18
 Ragusa, R., Iodice, E., Spavone, M., et al. 2023, *A&A*, 670, L20

- Ragusa, R., Mirabile, M., Spavone, M., et al. 2022, *Frontiers in Astronomy and Space Sciences*, 9, 852810
- Ragusa, R., Spavone, M., Iodice, E., et al. 2021, *A&A*, 651, A39
- Rebolo, R., Martin, E. L., & Zapatero Osorio, M. R., eds. 1998, *Astronomical Society of the Pacific Conference Series*, Vol. 134, *Brown dwarfs and extra-solar planets*
- Rodríguez-Gomez, V., Pillepich, A., Sales, L. V., et al. 2016, *MNRAS*, 458, 2371
- Roediger, E., Brügggen, M., Simionescu, A., et al. 2011, *MNRAS*, 413, 2057
- Roediger, J. C. & Courteau, S. 2015, *MNRAS*, 452, 3209
- Román, J., Trujillo, I., & Montes, M. 2020, *A&A*, 644, A42
- Sanderson, R. E., Garrison-Kimmel, S., Wetzel, A., et al. 2018, *ApJ*, 869, 12
- Sandford, E., Küpper, A. H. W., Johnston, K. V., & Diemand, J. 2017, *MNRAS*, 470, 522
- Schinnerer, E., Leroy, A., Blanc, G., et al. 2019, *The Messenger*, 177, 36
- Schlafly, E. F. & Finkbeiner, D. P. 2011, *The Astrophysical Journal*, 737, 103
- Shipp, N., Drlica-Wagner, A., Balbinot, E., et al. 2018, *ApJ*, 862, 114
- Sola, E., Duc, P.-A., Richards, F., et al. 2022, *A&A*, 662, A124
- Spavone, M., Capaccioli, M., Napolitano, N. R., et al. 2017a, *Galaxies*, 5, 31
- Spavone, M., Capaccioli, M., Napolitano, N. R., et al. 2017b, *A&A*, 603, A38
- Springel, V., Wang, J., Vogelsberger, M., et al. 2008, *MNRAS*, 391, 1685
- Starkman, N., Nibauer, J., Bovy, J., et al. 2025, *ApJ*, 980, 253
- Strateva, I., Ivezić, Ž., Knapp, G. R., et al. 2001, *AJ*, 122, 1861
- Thilker, D. A., Bianchi, L., Meurer, G., et al. 2007, *ApJS*, 173, 538
- Tortora, C., Antonuccio-Delogu, V., Kaviraj, S., et al. 2009, *MNRAS*, 396, 61
- Tortora, C., Napolitano, N. R., Cardone, V. F., et al. 2010, *MNRAS*, 407, 144
- Tortora, C., Napolitano, N. R., Romanowsky, A. J., et al. 2011a, *MNRAS*, 418, 1557
- Tortora, C., Pipino, A., D'Ercole, A., Napolitano, N. R., & Matteucci, F. 2013, *MNRAS*, 435, 786
- Tortora, C., Ragusa, R., Gatto, M., et al. 2024, *The Messenger*, 193, 31
- Tortora, C., Romeo, A. D., Napolitano, N. R., et al. 2011b, *MNRAS*, 411, 627
- Trujillo, I., D'Onofrio, M., Zaritsky, D., et al. 2021, *A&A*, 654, A40
- Trujillo, I. & Fliri, J. 2016, *ApJ*, 823, 123
- Tulin, S. & Yu, H.-B. 2018, *Phys. Rep.*, 730, 1
- van Dokkum, P. G., Abraham, R., & Merritt, A. 2014, *ApJ*, 782, L24
- Venhola, A., Peletier, R., Laurikainen, E., et al. 2017, *A&A*, 608, A142
- Venhola, A., Peletier, R. F., Salo, H., et al. 2022, *A&A*, 662, A43
- Vulcani, B., Bamford, S. P., Häußler, B., et al. 2014, *MNRAS*, 441, 1340
- White, S. D. M. & Frenk, C. S. 1991, *ApJ*, 379, 52
- Zaritsky, D., Donnerstein, R., Karunakaran, A., et al. 2022, *ApJS*, 261, 11
- Zibetti, S., Charlot, S., & Rix, H.-W. 2009, *MNRAS*, 400, 1181

Appendix A: Surface photometry procedure

In this section we outline the main steps of the data analysis used to derive SB profiles:

i) Cropping: The first step of the data analysis consisted of cropping the image edges (i.e. regions with a low S/N) to retain a sufficiently large area that encompasses the faintest light surrounding the target.

ii) Masking: On the cropped image, we then performed meticulous manual masking of all potential contaminants in the images, including foreground and background galaxies, stars, and galactic cirrus. This step ensured that only the target structures were analysed while excluding sources of interference.

iii) Correcting for scattered light from bright stars: To mitigate the effects of scattered light from bright stars present in the field, a modelling and subtraction procedure was applied. Bright stars in the field were modelled using a 2D profile and subsequently subtracted from the original image out to large radii. However, this analytical modelling often leaves systematic residuals, primarily due to the presence of non-symmetric features such as optical ‘ghosts’—internal reflections typical of bright sources in these datasets. They break the expected symmetry of the source and cannot be perfectly removed by the model. Consequently, these residual regions were manually masked to ensure the integrity of the LSB measurements. These masks are visible as white circular patches in the right panel of Fig. 7. This correction minimizes the influence of stellar light on the LSB measurements, preserving the integrity of the data.

iv) Assessing the limiting radius and background fluctuations: Following the removal of contaminating stars, the limiting radius of photometry (R_{lim}) was determined. This radius corresponds to the point at which the galaxy’s light merges with residual background fluctuations. To estimate R_{lim} , the light distribution was analysed in circular annuli centred on the galaxy, to sample the residual sky without being biased by the morphology of the galaxy’s isophotes. As the images were pre-processed for sky subtraction, the residual background level was found to be near zero. The average residual value and its RMS are then used in step v), contributing to the estimate of the SB and its associated errors.

v) Isophotal fitting: We performed the isophotal analysis of the galaxy light distribution using the Ellipse module from the photutils python package. The fitting procedure was carried out independently on each optical band (g , r , i), adopting a fixed centre across all filters to ensure consistency in the structural comparison. In each band, we determined the galaxy centre by first applying a Gaussian smoothing with a 3-pixel kernel to the image, and then identifying the brightest central region of 9 square pixels. The central pixel of this region was adopted as the galaxy centre. The initial input parameters — position angle (PA) and ellipticity (ϵ , defined as $\epsilon = 1 - (b/a)$, where a and b are the semi-major and semi-minor axes, respectively)— were set based on literature values, providing a physically motivated starting point for the isophotal fitting. The algorithm proceeds by iteratively adjusting the semi-major axis (sma) with a step of 0.1 pixels, while solving for the best-fitting isophotes at increasing radii, up to the edges of the frames. The centre was kept fixed (fix_center=True), and the fit was performed using median sampling along the isophotes (integrmode=’median’). The final isophotal solution was derived in a non-linear mode (linear=False), with convergence controlled by a maximum number of iterations and a tolerance on gradient errors, which for the standard setup are maxit=100 and maxgerr=50, respectively. This approach allowed us to extract reliable radial profiles of SB,

Table B.1. SB limiting magnitudes μ_{lim} within 100 arcsec² areas in empty sky regions.

Method	Depth [mag arcsec ⁻²]
(1) μ_g 1 σ SB limit	30.7
(2) μ_g 1 σ SB limit	30.7
(1) μ_r 1 σ SB limit	30.5
(2) μ_r 1 σ SB limit	30.4
(1) μ_i 1 σ SB limit	29.5
(2) μ_i 1 σ SB limit	29.5

Each line corresponds to the different approaches: (1) the standard deviation among 100 arcsec² tiles following gnuastro/noisechisel; and (2) Gaussian fits of the masked sky regions following Román et al. (2020).

ellipticity, and position angle, which are then used to investigate the structural components and stellar population gradients in the galaxy.

These steps ensured the robust analysis of LSB components, enabling a deeper understanding of their properties and their connection to the broader astrophysical environment.

Appendix B: Limiting surface brightness calculation

In this study, we calculated the limiting SB, μ_{lim} , within a 100 arcsec² region as a function of the signal standard deviation σ based on the methods outlined in Hunt et al. (2025). We used two complementary approaches:

– NoiseChisel with gnuastro. We used the NoiseChisel software (Akhlaghi & Ichikawa 2015), which is specifically designed to detect highly extended, faint objects embedded in noisy backgrounds. NoiseChisel runs on tiles of 100 arcsec² and calculates the median σ in regions where no detections are present, isolating the empty sky background. These results are shown in Table B.1 as line (1) in each band.

– Gaussian fitting on masked data. Following Román et al. (2020), we fitted a Gaussian to the distribution of the masked sky-background signal using masks from the NoiseChisel detections (as in method 1). The Gaussian best-fit standard deviation (σ) across the masked background image is then used to calculate limiting AB magnitudes for each band, as shown in line (2) of Table B.1.

These two methods probe background variations on different spatial scales: method (1) measures the local pixel-to-pixel noise, while method (2) is sensitive to large-scale background fluctuations across the masked image. As shown in Tab.B.1, both methods yield consistent values, differing by less than 0.1 mag.

We stress that to assess the effective depth at which reliable SB measurements can be performed, we additionally quantify the large-scale residual background fluctuations by analysing the radial count profiles and identifying the plateau region where the profiles flatten and become dominated by background residuals, as described in step iv) of App. A. These large-scale background fluctuations are used both to define the effective SB depth adopted in the analysis of the radial profiles and to build the corresponding uncertainty budget.

The achieved formal depths—30.7, 30.5, and 29.5 mag arcsec⁻² in the g , r , and i bands—match the planned depths

of VST-SMASH (Tortora et al. 2024). The effective SB depth reached by the azimuthally averaged profiles is discussed in Sect. 4.1. This approach follows closely the methodology adopted in Ragusa et al. (2021) and ensures a conservative and physically meaningful assessment of the SB limits.

Appendix C: One-component Sérsic fit

In this appendix we present the results of the one-component Sérsic fits performed on the azimuthally averaged SB profiles of IC 5332 in the g , r , and i bands. Figure C.1 shows, from top to bottom, the best-fit Sérsic models (red lines) overlaid on the observed profiles in each band.

As discussed in Sect. 4.3, although the single-component model provides a reasonable approximation in the inner regions, it systematically fails to reproduce the outer light distribution in all three bands. Indeed, in all bands, the one-component Sérsic model yields a reduced χ^2 values (62.420, 69.27 and 90.81 in the g , r , and i bands) and a sum of the absolute residuals (17.31, 10.41, 10.07 mag in the g , r , and i bands) higher than the two-components fit (see Sect. D). The improvement provided by the two-component model is also clearly visible in the residual profile in the bottom panels of Fig. D when we compare them with the one in the one-component model, shown in the bottom panels of Fig. C.

Appendix D: Two-component Sérsic fit

We show in Fig. D.1 the results of the two-component Sérsic fits performed on the azimuthally averaged SB profiles of IC 5332 in the g and i bands.

The goodness of fit was quantified using the reduced χ^2 , allowing a direct comparison to be made between single- and two-component Sérsic models. However, we note that in deep SB profile analyses the reduced χ^2 values can be systematically larger than unity due to correlated uncertainties between adjacent radial bins and residual background systematics that are not fully captured by the formal photometric errors. For this reason, the reduced χ^2 should be interpreted as a relative indicator of goodness of fit rather than as an absolute statistical estimator. In addition to the reduced χ^2 , we therefore quantify the goodness of fit using the sum of the absolute residuals, $\text{sum}(|\Delta\mu|)$, where $\Delta\mu = \mu_{\text{obs}} - \mu_{\text{model}}$. This metric provides a robust measure of the typical deviation between the data and the model. In all bands, the two-component Sérsic model yields both lower reduced χ^2 values (14.67, 23.70, 27.11 in the g , r , and i bands) and sum of the absolute residuals (1.068, 1.012, 1.954 mag in the g , r , and i bands) than the single-component fit (see Sect. C), confirming that it provides a statistically better description of the observed profiles. This motivates the adoption of a more flexible two-component model, as described in the main text.

Appendix E: Impact of bright stars on the radial SB profiles

The presence of two bright stars at the south-west edge of IC 5332 raises the possibility that diffuse PSF halos could contaminate the SB measurements in that region, then to quantitatively assess this effect and exclude any bias in the radial SB profiles, we performed a sector-based analysis. We divided the galaxy into three angular sectors (-60° ; 60°), (60° ; 180°) and (180° ; 300°), with respect to the horizontal. We independently derived the radial SB profiles in each sector using the

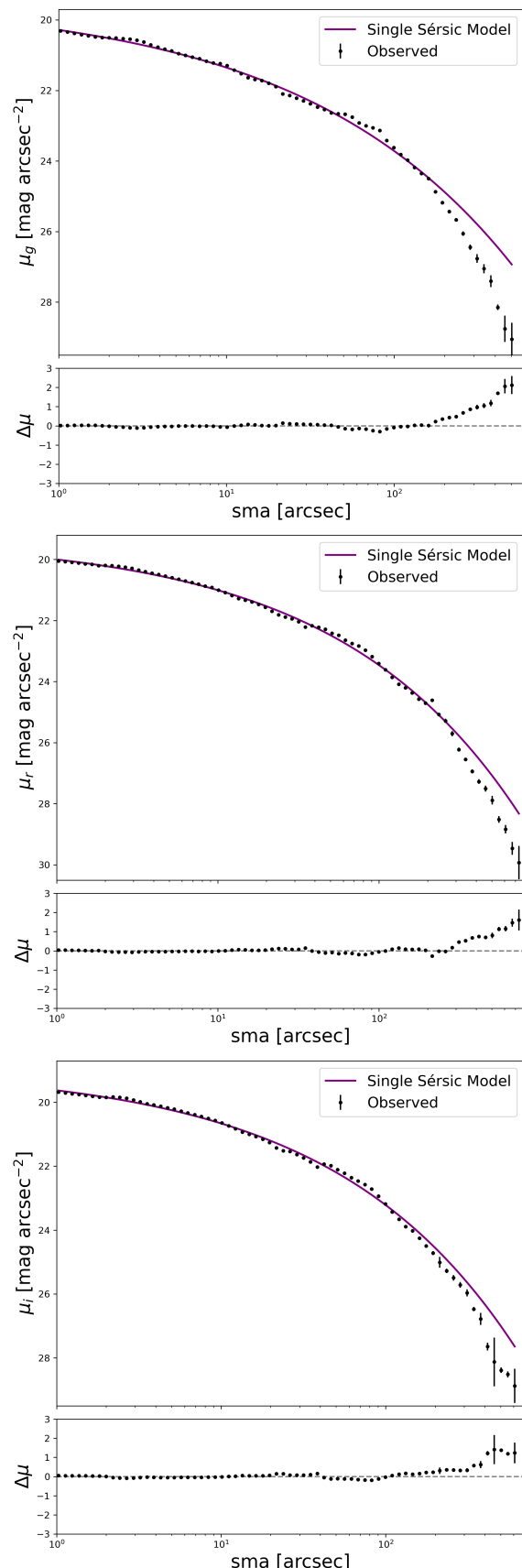


Fig. C.1. Sérsic fit of IC 5332. From the top to the bottom: One-component model of the azimuthally averaged SB profiles of IC 5332 in the g , r , and i bands, respectively. In each plot, the violet line indicates the best-fit model of the observed light profile in black. The bottom panels show the residuals of the fit, $\Delta\mu = \mu_{\text{obs}} - \mu_{\text{model}}$.

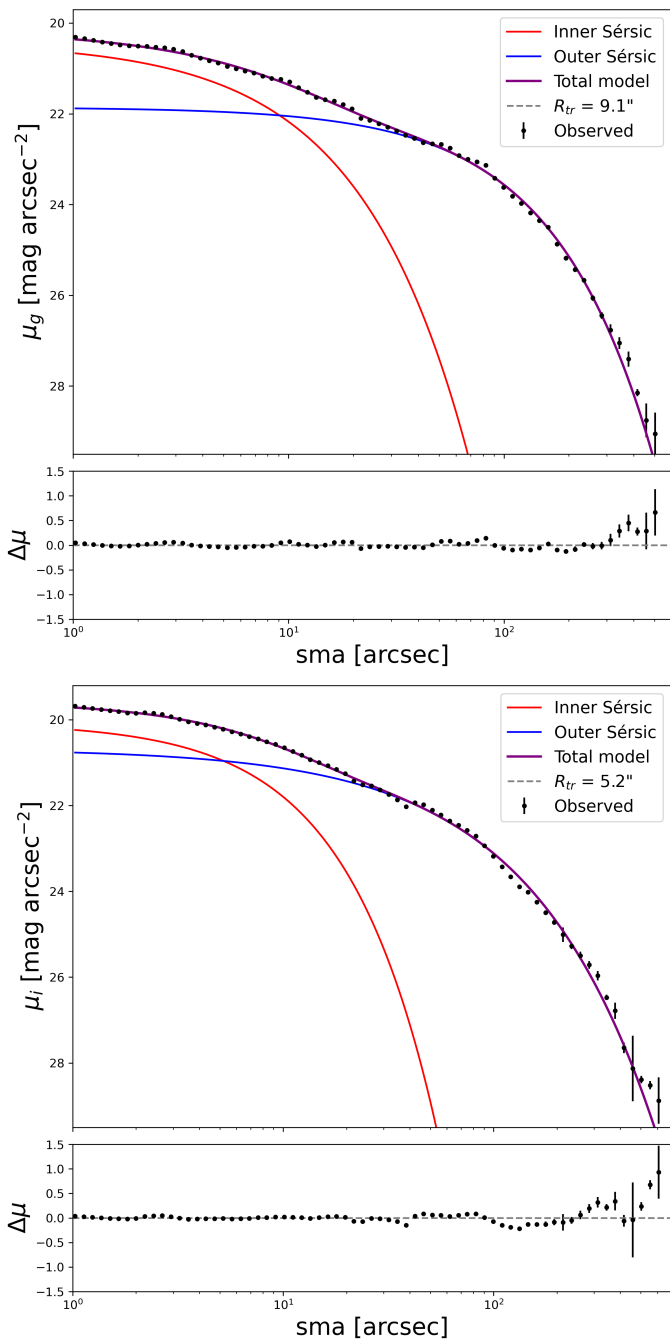


Fig. D.1. Two-component Sérsic fit of the azimuthally averaged SB profiles of IC 5332, in the g (on the top) and i (on the bottom) bands. In both panels, the red line indicates the best-fit model of the observed light profile. The bottom panels show the residuals of the fit, $\Delta\mu = \mu_{obs} - \mu_{model}$.

same isophotal fitting procedure described in Sect. A. One of these sectors encompasses the entire region potentially affected by scattered light from the bright stars (-60° , 60°) and overlaps with the area where the stellar streams are detected. Figure E.1 shows the SB profiles obtained for the three sectors in the g , r , and i bands. The sector containing the bright stars does not show any systematic excess or deviation with respect to the others. This test demonstrates that the contribution of stellar PSF halos to the radial SB profiles is negligible and does not affect the azimuthally averaged profiles adopted in the main analysis. We therefore conclude that the scientific results based on the SB

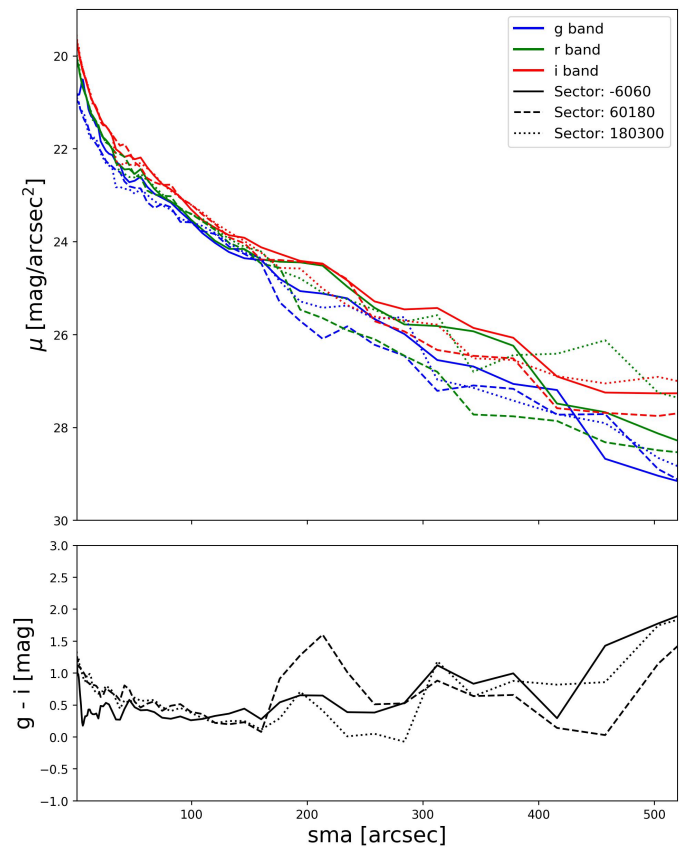


Fig. E.1. Azimuthally averaged surface brightness profiles of IC 5332 in VST g (blue), r (green), and i (red) bands, in three different angular sectors, anti-clockwise with respect to the horizontal: (-60° ; 60°), (60° ; 180°), and (180° ; 300°), represented with the solid, dashed, and dotted lines, respectively. The $g - i$ (in black) colour profiles of the angular sectors are also shown in the bottom panel.

profiles are robust against potential contamination from nearby bright stars.

Appendix F: Comparison with DESI Legacy Survey DR10 imaging

To further verify the reality of the LSB streams detected in the outskirts of IC 5332, and to exclude the possibility that they are artefacts caused by scattered light from nearby bright stars, we compared our VST images with independent optical imaging from the DESI Legacy Survey DR10. The DESI DR10 image of IC 5332 in Fig. F.1 show significantly reduced scattered light from adjacent bright stars in the region of interest. Unfortunately, the data from DESI DR10 suffer from many artefacts, especially regarding the coverage of the external parts, which prevents us from being able to use them consistently for our purposes. However, both stellar streams discussed in Sect. 5, including stream 2, which partially overlaps with the region affected by the bright stars in the VST data, are clearly visible also in the DESI images. This confirms that these features are genuine stellar structures associated with IC 5332 and not artefacts produced by stellar PSF halos or background subtraction residuals; therefore the detection of the streams in two independent datasets significantly strengthens the robustness of our analysis and supports their interpretation as accretion-related structures.

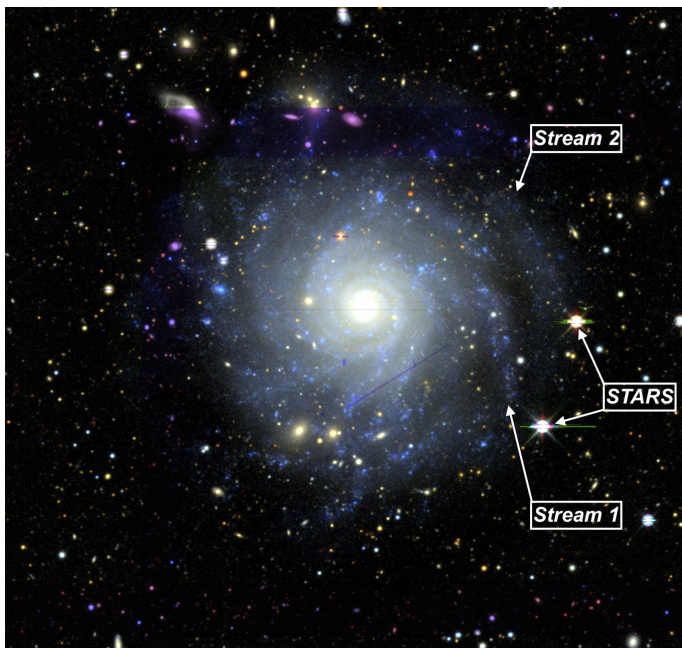


Fig. F.1. DESI DR10 image of IC 5332. The stars and streams are labeled in white.

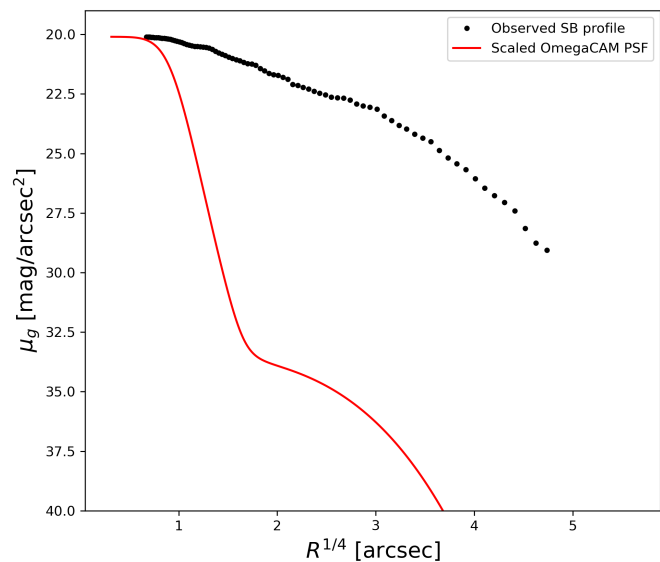


Fig. G.1. Comparison between the observed g -band SB profile of IC 5332 (black dots) and the scaled OmegaCAM PSF model (red line). The PSF model accounts for both the core (Moffat) and the extended exponential wings as described in Capaccioli et al. (2015).

Appendix G: Impact of the extended PSF wings

OmegaCAM is known to exhibit extended, exponential-like PSF wings, as detailed by Capaccioli et al. (2015). To assess their impact on our analysis, we reconstructed a composite PSF model—comprising a Moffat core and an exponential outer component—and scaled it to match the central SB of the galaxy. As shown in Fig. G.1, the scaled PSF profile, in red, remains several magnitudes fainter than the observed galaxy emission, in black, at radii larger than ~ 150 arcsec. Even adopting the conservative model with extended exponential wings as in Fig. B1 from Capaccioli et al. (2015), the PSF contribution stays well below the measured SB in the outer regions. This demonstrates that the extended wings do not significantly affect our SB profiles or the detection of the stream-like structure.

Acknowledgements. R.R. acknowledges financial support grants through INAF-WEAVE StePS funds and through PRIN-MIUR 2020SKSTHZ. MS acknowledges the support by the Italian Ministry for Education, University and Research (MIUR) grant PRIN 2022 2022383WFT “SUNRISE”, CUP C53D23000850006, and by VST funds. Based on data collected with the INAF VST telescope at the ESO Paranal Observatory.