

# Metal-poor stars towards the Galactic bulge: A population potpourri<sup>★,★★</sup>

Andreas Koch<sup>1</sup>, Andrew McWilliam<sup>2</sup>, George W. Preston<sup>2</sup>, and Ian B. Thompson<sup>2</sup>

<sup>1</sup> Landessternwarte, Zentrum für Astronomie der Universität Heidelberg, Königstuhl 12, 69117 Heidelberg, Germany  
e-mail: akoch@lsw.uni-heidelberg.de; [andy;gwp;ian]@obs.carnegiescience.edu

<sup>2</sup> Carnegie Observatories, 813 Santa Barbara St., Pasadena, CA 91101, USA

Received 21 September 2015 / Accepted 30 October 2015

## ABSTRACT

We present a comprehensive chemical abundance analysis of five red giants and two horizontal branch (HB) stars towards the southern edge of the Galactic bulge, at  $(l, b) \sim (0^\circ, -11^\circ)$ . Based on high-resolution spectroscopy obtained with the *Magellan*/MIKE spectrograph, we derived up to 23 chemical element abundances and identify a mixed bag of stars, representing various populations in the central regions of the Galaxy. Although cosmological simulations predict that the inner Galaxy was host to the first stars in the Universe, we see no chemical evidence of the ensuing massive supernova explosions: all of our targets exhibit halo-like, solar  $[\text{Sc}/\text{Fe}]$  ratios, which is in contrast to the low values predicted from Population III nucleosynthesis. One of the targets is a CEMP-*s* star at  $[\text{Fe}/\text{H}] = -2.52$  dex, and another target is a moderately metal-poor ( $[\text{Fe}/\text{H}] = -1.53$  dex) CH star with strong enrichment in *s*-process elements (e.g.,  $[\text{Ba}/\text{Fe}] = 1.35$ ). These individuals provide the first contenders of these classes of stars towards the bulge. Four of the carbon-normal stars exhibit abundance patterns reminiscent of halo stars across a metallicity range spanning  $-2.0$  to  $-2.6$  dex, i.e., enhanced  $\alpha$ -elements and solar Fe-peak and neutron-capture elements, and the remaining one is a regular metal-rich bulge giant. The position, distance, and radial velocity of one of the metal-poor HB stars coincides with simulations of the old trailing arm of the disrupted Sagittarius dwarf galaxy. While their highly uncertain proper motions prohibit a clear kinematic separation, the stars' chemical abundances and distances suggest that these metal-poor candidates, albeit located towards the bulge, are not of the bulge, but rather inner halo stars on orbits that make them pass through the central regions. Thus, we caution similar claims of detections of metal-poor stars as true inhabitants of the bulge.

**Key words.** stars: abundances – stars: carbon – stars: Population II – Galaxy: abundances – Galaxy: bulge – Galaxy: halo

## 1. Introduction

The first stars in the Universe were very massive and perished after very short lifetimes of a few tens of Myr (e.g., Bromm & Larson 2004); however, it is still possible to see their nucleosynthetic imprints on the next generation of long-lived stars that formed out of their ejecta (e.g., Caffau et al. 2013). The Galactic halo hosts a substantial fraction of known metal-poor stars: its metallicity distribution function (MDF) peaks at  $-1.5$  dex and comprises a broad tail of metal-poor stars down to  $-7$  dex (Beers & Christlieb 2005; Schörck et al. 2009; Keller et al. 2014). Conversely, the Galactic bulge has been identified as an archetypical old (Clarkson et al. 2008), yet metal-rich population (e.g., McWilliam & Rich 1994), which indicates a rapid formation at early times.

Intriguingly, chemodynamical models of the chemical evolutionary history of the Milky Way's (MW) stellar halo predict that the oldest and most metal-poor stars in our Galaxy are most common in the bulge. The simulations of Diemand et al. (2005) already indicate that 30–60% of the first stars would reside within the inner 3 kpc. Similarly, Tumlinson (2010) suggests that metal-poor stars below  $-3.5$  dex, formed at redshifts  $z \gtrsim 15$ , would

be found most frequently in the bulge, owing to the inside-out growth of dark-matter-dominated large-scale structures. It is important to note, however, that the present-day, central location of these stars then does not reflect their birthplace, which is commonly paraphrased as “in the bulge, not of the bulge”.

Within the hierarchical framework of structure formation, the Galactic stellar halo formed via the accretion of dwarf galaxy-like fragments. This was challenged by an apparent mismatch of the chemical abundances of halo stars and the supposed building blocks (the dwarf spheroidal galaxies; e.g., Shetrone et al. 2001), except for the most metal-poor component, and when compared to the lowest-mass systems (e.g., Koch & Rich 2014). The case is less clear in the bulge of the MW: an accretion origin of the bulge would leave kinematic traces in phase space, none of which has yet been conclusively detected in kinematic surveys (Howard et al. 2008; Kunder et al. 2012, 2014; but cf. Nidever et al. 2012).

By now, metal-poor stars have been detected towards the bulge, but barely overlapping with the class of extremely metal-poor (EMP) stars, i.e., below  $-3$  dex. Moreover, this very metal-poor component is only sparsely sampled, with only 27 spectroscopically confirmed stars between  $-2$  dex and the most metal-poor bulge candidate at  $-3.02$  dex (Ness et al. 2013a; García Pérez et al. 2013; Howes et al. 2014; Schlaufman & Casey 2014; Casey & Schlaufman 2015). Nonetheless, the bulge offers a wealth of stars with chemical peculiarities of one kind or the other, which provide important insight into its chemical

\* This paper includes data gathered with the 6.5 meter *Magellan* Telescopes located at Las Campanas Observatory, Chile.

\*\* Full Tables 2 and 3 are only available at the CDS via anonymous ftp to [cdsarc.u-strasbg.fr](http://cdsarc.u-strasbg.fr) (130.79.128.5) or via <http://cdsarc.u-strasbg.fr/viz-bin/qcat?J/A+A/587/A124>

**Table 1.** Observing log.

Star <sup>a</sup>	IAU name	$\alpha$ (J2000.0)	$\delta$ (J2000.0)	Date	Exp. time [s]	$S/N^b$ [pixel <sup>-1</sup> ]
872-13971	J183256.52-344529.3	18:32:56.52	-34:45:29.28	Jul-14-2007	3600	50/35/28
899-14135	J183338.54-342940.9	18:33:38.54	-34:29:40.91	Jul-08,09-2007	11700	40/25/12
873-17221	J183426.75-345554.4	18:34:26.75	-34:55:54.39	Jul-08-2007	4800	50/30/20
874-24995	J183558.75-345839.1	18:35:58.75	-34:58:39.14	Jul-10-2007	4800	50/35/25
941-27793	J183113.29-335148.3	18:31:13.29	-33:51:48.25	Jul-12-2007	6600	60/40/28
958-10464	J183003.87-333423.6	18:30:03.87	-33:34:23.57	Jul-10,11-2007	7060	50/40/30
896-37860	J183025.73-343130.0	18:30:25.73	-34:31:30.01	Jul-14-2007	3600	40/35/25

**Notes.** <sup>(a)</sup> ID consisting of plate number and entry number in our photometric catalogue. Throughout the paper, we use the second part of this ID as unique identifier of the stars for brevity. <sup>(b)</sup> Given at 6500/4500/4000 Å.

evolutionary history and covering, amongst others, Li-rich giants, *r*-process enhanced stars, and barium stars, (Johnson et al. 2012, 2013b; Lebzelter et al. 2013), albeit at higher metallicities above  $\sim -1.8$  dex. Thus, a comprehensive chemical identification of the purported very metal-poor bulge is still pending and the question as to which component they, chemically speaking, resemble, remains open. In this context, Ness et al. (2013a) anatomised the metallicity distribution of the bulge over a broad field of view, suggesting up to five components. While strongly peaked at supersolar metallicities, this MDF also revealed a (low-number) overlap with the inner Galactic halo and the metal-weak thick disk. Finally, Casey & Schlafman (2015) found the first metal-poor bulge candidates down to  $[\text{Fe}/\text{H}] = -3$  dex; the detailed chemical composition of their three stars is compatible with the general MW halo, with the exception of low Sc/Fe abundance ratios, indicative of enrichment by Population III ejecta.

Finding these metal-poor stars and ascertaining their membership with the bulge is not only of interest for the sake of reconstructing the chemical evolution of the bulge, but also has important implications for studying the morphology of the bulge. Number counts of the red clump, which led to the discoveries of, for instance, bar, boxy and X-shaped substructures (e.g., McWilliam & Zoccali 2010; Wegg et al. 2015) employed certain cuts in colour-magnitude space. However, a prominent population of metal-poor, thus bluer, stars can be missed by fixed colour criteria, which could lead to biased, reconstructed spatial structures.

Here, we present a long-standing campaign and its results to systematically look for metal-poor bulge stars. This paper is organised as follows: in Sect. 2 we lay out our target selection and data processing; the abundance analyses are described and discussed out in detail in Sects. 3 and 4. In Sect. 5 we single out two stars with peculiar abundance distributions and in Sect. 6 we address the question of their membership with the bulge before summarizing our findings in Sect. 7.

## 2. Target selection, observations, and data reduction

### 2.1. Identification of metal-poor candidates

The stars studied here were identified in a search for EMP stars in the Galactic bulge (Preston et al., unpublished), near  $b = -10^\circ$ , employing the 2.5-m du Pont and 1-m Swope telescopes at Las Campanas Observatory.

EMP candidate stars were initially identified by weak absorption from the Ca K line, at 3933 Å, using narrow-band imaging. Line absorption was estimated from the flux transmitted by a 20 Å wide Ca K filter compared to the flux in a 200 Å wide

continuum filter, both centred at 3933 Å. *BVI* images were also obtained to calibrate the temperature-sensitivity of the resulting CaK index. The CaK Index and  $B - V$  colours of the bulge stars were then used to obtain initial photometric metallicities, which we calibrated against similar photometry of known EMP standard stars.

Not all bulge stars with a low CaK index turned out to be metal poor. For instance, sometimes the Ca K photometry suffered from spurious systematic effects, such as a difficult to resolve, direct cosmic ray hit on the stellar image, or a diffraction spike from a nearby bright star. M stars, with strong molecular bands, have weak CaK indices because heavy TiO blanketing drowns out the Ca K absorption. Therefore, in order to eliminate false-positive detections, low-resolution ( $R \sim 2000$ ), multi-object, confirmatory spectra of the photometric EMP candidates were obtained using the duPont Wide-Field-CCD (WFCCD) grism spectrograph. From these spectra, the measured equivalent width (EW) of the Ca K line was used, in combination with  $B - V$  colour, to estimate metallicity.

We note that none of our targets overlaps with the moderately to very metal-poor samples of Johnson et al. (2012, 2013a, 2014), García Pérez et al. (2013), Howes et al. (2014), or Schlafman & Casey (2014).

### 2.2. High-resolution MIKE spectroscopy

Observations of seven EMP candidates presented here were taken spread over six nights in July 2007 with a median seeing of 0.95'', while individual exposures reached as high as 2'' and notably better conditions ( $\sim 0.6''$ ) during several nights. Our chosen set-up included a 0.5'' slit,  $2 \times 1$  binning in spectral and spatial dimensions and resulted in a resolving power of  $R \sim 45\,000$ . An observing log is given in Table 1.

The data were processed in a standard manner with the pipeline reduction package of Kelson (2000, 2003), which accounts for flat field division, order tracing from quartz lamp flats, and wavelength calibration using built-in Th-Ar lamp exposures that were taken immediately after each science exposure. Continuum-normalisation was performed by dividing the extracted spectra by a high-order polynomial. The final spectra reach signal-to-noise ratios (S/N) of 50 per pixel in the peak of the order containing  $H\alpha$ , declining towards  $\sim 25$  in the bluest orders at 4000 Å (see Table 1).

Radial velocities were measured from a cross correlation of the heliocentrically corrected spectra against a typical red giant star template, yielding a precision of typically 0.5 km s<sup>-1</sup>.

**Table 2.** Line list for the metal-poor sample.

Element	$\lambda$ [Å]	E.P. [eV]	$\log gf$	$EW$ [mÅ]					
				13971	17221	24995	27993	10464	37860
Li I	6707.70	0.00	0.174	18	15	...	...	...	...
Na I	5889.95	0.00	0.110	181	199	180	193	283	223
Na I	5895.92	0.00	0.190	159	167	162	173	252	211
Na I	8183.26	2.10	0.230	36	22	28	41	117	76
Na I	8194.79	2.10	0.470	54	22	53	88	153	88
Mg I	4571.10	0.00	-5.623	77	60	82	49	88	70
Mg I	4702.99	4.35	-0.440	87	77	87	111	149	110
Mg I	5528.42	4.35	-0.481	93	80	92	100	153	124
Mg I	5711.09	4.33	-1.728	...	19	22	11	57	24

Notes. Table 2 is available in its entirety in electronic form via the CDS.

### 3. Abundance analysis

Our chemical element abundance analysis builds on a standard EW absolute,  $gf$ , abundance analysis, which closely follows the procedures of our previous works (e.g., Koch & McWilliam 2014). In all following steps, the 2013 version of the stellar abundance code MOOG (Snedden 1973) was used. The line list is the same used in Koch & McWilliam (2014, and references therein) for the similarly metal-poor globular cluster NGC 5897 ([Fe/H] = -2.04 dex), complemented by transitions listed in McWilliam et al. (1995) and Sadakane et al. (2004). For vanadium, we employed the most recent  $\log gf$  measurements of Lawler et al. (2014) and Wood (2014). One of the targets turned out to be a metal-rich star so that most features used in the metal-poor spectra are too strong and saturated to give meaningful abundances. For this object, we resorted to the line list of Ruchti et al. (in prep.), which was optimised for studies of the metal-rich Galactic components. Some heavy elements (e.g., La, Nd, Eu) have their dominant transitions in the blue spectral range, which is affected by heavy blending (e.g., Hansen et al. 2015) and we did not include these lines in following analysis of the metal-rich star. Finally, we note that in all cases, but in particular for the CEMP- $s$  star 27793, we assured that all used lines were located in spectral regions unaffected by molecular absorption.

We included the effects of hyperfine splitting for Sc, Mn, Co, Sr, Ba, and Eu using the information given in McWilliam et al. (1995) and Mashonkina & Christlieb (2014). Here we note its strong effect on Mn, where the hyperfine corrections can reach as high as 0.7 dex. Individual EWs were measured by fitting a Gaussian profile to the absorption lines using IRAF's *splot*, unless otherwise noted, where we employed spectral synthesis. The resulting line list is detailed in Tables 2 and 3 for the metal-rich star, while individual elements and transitions are further discussed in Sect. 5.

Model atmospheres were interpolated from the ATLAS grid of Kurucz<sup>1</sup>, one-dimensional 72-layer, plane-parallel, line-blanketed models without convective overshoot, assuming local thermodynamic equilibrium (LTE) for all species. The models incorporate the  $\alpha$ -enhanced opacity distribution functions, AODFNEW (Castelli & Kurucz 2003), since we anticipate the metal-poor bulge stars to show elevated  $[\alpha/\text{Fe}]$  ratios, as is seen in comparably metal-poor halo field stars. This is indeed in accord with our finding of  $\alpha$ -enhancements in all of the target stars (Sect. 5.3). The effect of using Solar-scaled distributions instead is negligible, as quantified in Sect. 4.1

<sup>1</sup> <http://kurucz.harvard.edu/grids.html>

**Table 3.** Line list for the metal-rich giant 14135.

Element	$\lambda$ [Å]	E.P. [eV]	$\log gf$	$EW$ [mÅ]
Na I	5688.20	2.10	-0.404	168
Na I	6154.23	2.10	-1.547	111
Na I	6160.75	2.10	-1.246	130
Mg I	5711.09	4.35	-1.724	148
Mg I	6318.72	5.11	-2.103	83
Mg I	6319.24	5.11	-2.324	57
Mg I	6319.49	5.11	-2.803	30
Mg I	7387.69	5.75	-1.000	106
Mg I	7691.55	5.75	-0.783	124

Notes. Table 3 is available in its entirety in electronic form via the CDS.

Initial estimates for the effective temperatures were obtained from the targets' photometry and by using the colour-temperature relations of Alonso et al. (1999). To this end, we used the stellar  $B - V$  colours from Preston et al. (unpublished) and  $J$ ,  $H$ , and  $K$ -band magnitudes from the 2 Micron All Sky Survey (2MASS; Skrutskie et al. 2006), which we transformed into the photometric system required by the Alonso calibrations, following Alonso et al. (1998) and Cutri (2003). This photometry was dereddened with the Schlegel et al. (1998) maps and applying the reddening law of Winkler (1997). The average values for  $T_{\text{eff}}$  from four colour indices are given in Table 4. The typical uncertainty, as quantified by the standard deviation, is  $\sim 130$  K but always better than 200 K.

Initial surface gravities,  $\log g$ , were based on the canonical stellar structure equations, where we adopted the photometric  $T_{\text{eff}}$  and the stars'  $V$ -band magnitude. The stellar mass was adopted as  $0.8 M_{\odot}$ , typical of metal-poor red giants in old stellar populations. As the targets' distance we adopted 8.5 kpc, assuming they are indeed located in the bulge (e.g., Reid et al. 2014). The CaK index was used to adopt the initial model atmosphere metallicities.

These stellar parameters were then refined by using an ensemble of Fe I lines. First,  $T_{\text{eff}}$  was set via excitation equilibrium, where we rejected weak lines with a reduced width  $RW = \log(EW/\lambda) < -5.5$  and strong, saturated lines above  $RW > -4.5$ . Thus, flat trends in the plot of abundance vs. excitation potential could be typically achieved within 50 K, yielding differences in the high- vs. low-excitation lines of less than the intrinsic dispersion.

Similarly, the microturbulence,  $\xi$ , was set by removing any trend of abundance with EW for this subset of lines, which yielded  $\xi$  precise to  $\sim 0.1 \text{ km s}^{-1}$ . Finally, we determined

**Table 4.** Properties of the target stars.

Star	$V$ [mag]	$(B - V)$ [mag]	$(V - K)$ [mag]	$T_{\text{eff}}$ [K]		$\log g$	$\xi$ [km s <sup>-1</sup> ]	[Fe/H]	Type <sup>b</sup>
				(phot.) <sup>a</sup>	(spec.)				
13971	14.92	0.806	2.48	4900 ± 115	4900	1.83	1.64	-2.31	RGB
14135	15.64	1.240	2.86	4485 ± 55	4650	2.86	1.50	-0.01	RGB
17221	15.03	0.846	2.44	4866 ± 144	4800	1.45	1.83	-2.66	RGB
24995	14.58	0.900	2.46	4921 ± 186	4800	1.58	1.92	-2.50	RGB
27793	15.55	1.030	2.51	4906 ± 187	4975	2.10	1.55	-2.52	RGB, CEMP- <i>s</i>
10464	15.27	0.750	2.14	5500 ± 108	5400	1.70	2.64	-1.53	HB, CH-star
37860	15.29	0.733	2.17	5296 ± 70	5150	1.40	2.15	-2.07	HB

**Notes.** <sup>(a)</sup> Average of  $T(V - K)$ ,  $T(J - K)$ ,  $T(J - H)$ , and  $T(B - V)$ . The error is the standard deviation of all four measures. <sup>(b)</sup> “RGB” = red giant branch star; “HB” = Horizontal branch star.

spectroscopic surface gravities through ionisation equilibrium of neutral and ionised Fe lines. Typically, a variation of  $\log g$  by 0.15 dex yielded an ionisation imbalance less than the combined statistical error of the respective Fe I and Fe II abundances and we adopted this value as our uncertainty on the surface gravity. These above procedures were iterated towards convergence of all parameters. All fiducial, spectroscopic, stellar parameters that we use for the remainder of our analyses can be found in Table 4. We note a very good agreement of the photometric and spectroscopic temperatures, where the photometric values are warmer by 61 K on average with a  $1\sigma$  dispersion of 81 K.

Two of the stars have lower gravities than expected if they were on the red giant branch (RGB) or subgiant branch, given their warmer  $T_{\text{eff}}$ . We associate these with the horizontal branch (HB) and label them in Table 4. Our adopted temperatures for these two HB stars put them outside the  $T_{\text{eff}}$  range of the instability strip (e.g., see Marconi et al. 2015). Their spectra show no evidence of variability in terms of line asymmetries or other activity indicators (for instance within the Balmer lines), nor any radial velocity variations between individual exposures, which were taken over the course of two nights (star 10464) and within one hour (object 37860). Thus we conclude that these stars are unlikely to be RR Lyrae or other variables.

## 4. Abundance results

All of our following abundance results, presented in Tables 5 and 6 are relative to the Solar, photospheric scale of Asplund et al. (2009). The subsequent Figs. 1–5 show LTE abundances for the sake of comparison with literature and we discuss NLTE effects in the individual subsections.

### 4.1. Error analysis

As a measure for the statistical errors on the derived abundances, we list in Tables 5 and 6 the  $1\sigma$  line-to-line scatter and number of lines,  $N$ , used in the analysis, which leads to small random uncertainties in those elements with many suitable transitions such as Fe, Ca, and Ti. For more ill-defined cases, where only one line was measurable, we assessed a  $1\sigma$  error using the formalism of Cayrel (1988), which accounts for the local continuum noise and the width of the lines. In some cases, the resulting error for individual stars is large, up to 0.15 dex on, e.g., the Li, Si, or Nd abundances when derived from the 6707, 5948, 4061 Å transitions alone. Typically, this random error is on the order of 0.08 dex on average. Eu abundances could only be derived from the 4129 Å-line to an accuracy of 0.08 dex.

In order to quantify the systematic errors on the final abundance ratios we used the standard approach of computing nine new atmosphere models with altered stellar parameters. Thus, each of ( $T_{\text{eff}}$ ,  $\log g$ ,  $\xi$ ,  $[M/H]$ ,  $[\alpha/\text{Fe}]$ ) was varied by its typical uncertainty, estimated above as ( $\pm 50$  K,  $\pm 0.15$  dex,  $\pm 0.10$  km s<sup>-1</sup>,  $\pm 0.1$  dex,  $\pm 0.1$  dex). To test the influence of the atmospheric  $\alpha$ -enhancement, we re-ran our analysis using the solar-scaled opacity distributions, ODFNEW, which mimics an uncertainty in the model  $[\alpha/\text{Fe}]$  ratio of 0.4 dex. New abundance ratios were then determined and we list in Table 7 the deviation in  $\log \varepsilon$  from those given in Tables 5 and 6, derived using the unaltered stellar parameters. This exercise was carried out for the coolest and the hottest stars in our metal-poor sample, viz. 17221 and 10464.

Here, the largest systematic error source is  $T_{\text{eff}}$ , while metallicity and the opacity distributions generally have a negligible influence, with the exception of carbon, where the latter parameters dominate. As an upper, conservative limit ignoring possible covariances between the stellar parameters (e.g., McWilliam 1995), we summed up all contributions in quadrature. Since a typical error on the observed  $[\alpha/\text{Fe}]$  ratio is 0.1 dex, we only transfer 1/4 of the “ODF” uncertainty into the final error budget. The final, total systematic uncertainty values are listed in the columns  $\sigma_{\text{tot}}$  in Table 7.

### 4.2. Iron abundance

With the exception of the *s*-process enhanced HB star 10464 (at -1.5 dex) and the regular, metal-rich bulge star at Solar metallicity, all of our targets are “very metal-poor stars” (Beers & Christlieb 2005), i.e., below  $[\text{Fe}/\text{H}] < -2$  dex, reaching as low as -2.66 dex.

Metal-poor stars “in” the bulge have been reported before, albeit in very low numbers: Kunder et al. (2012) confirmed the well-known vertical metallicity gradient in the bulge in that lower-latitude ( $-8^\circ$ ) fields are more metal rich, and only a hint of a population of metal-poor stars could be detected. García Pérez et al. (2013) found two stars marginally below -2 dex, which constitutes 0.1% of their large sample from the APOGEE. Howes et al. (2014) reported on four giants at -2.7 to -2.5 dex near  $|b| \sim 8^\circ$ - $9^\circ$ , and Schlafman & Casey (2014) devised a promising photometric selection method, from which Casey & Schlafman (2015) spectroscopically confirmed three stars towards the bulge that lie between -3 and -2.7 dex. One of the most comprehensive medium-resolution spectroscopic MDFs of the bulge was gathered by Ness et al. (2013a). Their data indicate a complex mix of up to five populations throughout the bulge, with a prominent peak at +0.3 dex. However, only 0.11% of their 14 000-star sample within 3.5 kpc falls below -2 dex, reaching

**Table 5.** Abundance results for the metal-poor stars with regular patterns.

Element <sup>a</sup>	13791			17221			24995			37860		
	[X/Fe]	$\sigma$	<i>N</i>	[X/Fe]	$\sigma$	<i>N</i>	[X/Fe]	$\sigma$	<i>N</i>	[X/Fe]	$\sigma$	<i>N</i>
Fe I	-2.31	0.21	90	-2.66	0.15	72	-2.49	0.14	79	-2.07	0.22	87
Fe II	-2.32	0.13	5	-2.66	0.18	4	-2.48	0.12	4	-2.06	0.17	9
A(Li) <sup>LTE</sup>	0.90	...	1	0.69	...	1	...	...	0	...	...	0
A(Li) <sup>NLTE</sup>	0.97	...	1	0.80	...	1	...	...	0	...	...	0
C I	-0.02	...	synth	0.09	...	synth	-0.27	...	synth	-0.16	...	synth
Na I <sup>LTE</sup>	0.00	0.02	4	0.08	0.23	4	-0.02	0.06	4	0.54	0.09	4
Na I <sup>NLTE</sup>	-0.31	0.18	4	-0.17	0.14	4	-0.28	0.21	4	0.10	0.22	4
Mg I	0.43	0.06	3	0.50	0.13	4	0.50	0.04	4	0.53	0.21	4
Si I	0.52	0.20	2	...	...	0	0.59	...	1	0.50	0.19	2
Ca I	0.40	0.33	18	0.38	0.23	12	0.31	0.24	14	0.43	0.23	15
Sc II	-0.02	0.12	7	-0.12	0.14	7	0.00	0.07	7	-0.04	0.12	7
Ti I	0.19	0.23	14	0.32	0.13	11	0.35	0.16	14	0.32	0.15	12
Ti II	0.32	0.17	12	0.30	0.10	10	0.33	0.15	12	0.19	0.09	11
V I	-0.22	...	1	-0.03	...	1	-0.16	...	1	-0.31	...	1
V II	...	...	0	...	...	0	0.10	...	1	-0.12	...	1
Cr I	-0.28	0.22	6	-0.38	0.28	6	-0.21	0.10	5	-0.16	0.09	6
Cr II	-0.06	...	1	0.03	...	1	-0.02	...	1	-0.11	...	1
Mn I	-0.66	0.25	6	-0.46	0.38	6	-0.42	0.26	6	-0.56	0.24	6
Co I	0.03	0.10	4	0.00	0.29	4	0.21	0.24	4	0.03	0.17	4
Ni I	0.02	0.12	5	-0.03	0.18	2	0.16	0.09	3	-0.09	0.15	3
Zn I	-0.03	0.00	2	0.37	0.08	2	0.16	0.16	2	0.12	0.02	2
Sr II	-0.08	0.08	2	0.20	0.05	2	-0.10	0.12	2	0.48	0.04	2
Y II	-0.08	0.13	8	-0.10	0.20	8	-0.20	0.19	3	0.11	0.12	6
Zr II	0.14	...	synth	0.31	...	synth	0.17	...	synth	0.32	...	synth
Ba II	-0.11	0.19	5	-0.27	0.17	5	-0.26	0.12	5	0.35	0.09	6
La II	-0.37	0.16	3	-0.23	0.15	3	-0.39	...	1	0.05	0.13	3
Nd II	0.09	0.13	2	0.37	0.25	3	-0.01	...	1	0.35	0.07	2
Eu II	0.00	...	1	-0.01	...	1	0.05	...	1	0.02	...	1

**Notes.** <sup>(a)</sup> Ionised species are given relative to Fe II. Abundance ratios are listed relative to iron, except for Fe I and Fe II (relative to H) and Li.

as low as  $-2.8$  dex. This metal-poor tail gains importance towards more negative latitudes ( $b \sim -10^\circ$ ), i.e., further from the plane, which already hints at an increasing overlap with underlying halo. In fact, Ness et al. (2013a) identify this low-number, metal-poor component with the inner Galactic halo, as later confirmed by Ness et al. (2013b) as a slowly rotating spheroidal population. All these lines of evidence illustrate the difficulty in telling metal-poor stars as members of the genuine, old bulge from an underlying inner halo population and, based on the low metallicities of our targets alone, no firm association with either component could be achieved.

#### 4.3. Light elements: C, Li, Na

Li could only be measured from the resonance line at 6707 Å in two of the red giants, with EWs of 15 and 18 mÅ. The abundances indicate the strongly depleted levels below  $A(\text{Li}) < 1$ , as is expected for these evolved stars, since their interiors favour the downward transport and rapid destruction of this fragile element (e.g., Bonsack 1959; Iben 1965; Lind et al. 2009).

We determined carbon abundances in a  $\chi^2$ -sense from the  $A^2\Delta - X^2\Pi$  G-band near 4320 Å. Our synthesis used a line list kindly provided by B. Plez (priv. comm.). The typical uncertainty of the fit lies at  $\sim 0.15$  dex and is driven by uncertainties in the continuum placement. As Fig. 1 (top panel) indicates, four of the stars show [C/Fe] ratios that are fully consistent with metal-poor halo stars, while two stars, 10464 and 27793, show elevated C abundances. At [Fe/H] =  $-2.52$  and [C/Fe] = 1.44 dex, the latter provides a typical example of a

carbon-enhanced metal-poor (CEMP) star (Beers & Christlieb 2005). The origin of its carbon over-abundance is most likely the mass transfer from the envelope of an asymptotic giant branch (AGB) star binary companion (now a white dwarf; e.g., Aoki et al. 2007; Sneden et al. 2008; Hansen et al. 2014), consistent with the observed very strong enrichment of *s*-process elements (Sect. 4.6). This star is discussed in further detail in Sect. 5.2.

Since the commonly used Na doublets near 5688 and 6154 Å were undetectable in our metal-poor sample, we resorted to the prominent Na D lines, provided they were not too strong and saturated, and the near-IR doublet at 8183, 8194 Å. In either case we assured that the stellar lines were well separated from ISM absorbers and telluric contamination. The derived abundances were corrected for departures from LTE using predictions from Lind et al. (2011)<sup>2</sup> and in Tables 5 and 6 and Fig. 1 we show both LTE and NLTE values. While the Na abundances in our stars appear high, they are still compatible with the bulk of halo reference stars at similar metallicity.

#### 4.4. $\alpha$ -elements: Mg, Si, Ca, Ti

For the  $\alpha$ -elements Mg, Ca, and Ti, a wealth of absorption lines are detectable in the metal-poor stars' spectra, while for Si we were only able to measure one or two of the lines of moderate strength at 5948 and 7423 Å. The literature data for Mg we used for comparison in Fig. 1 were not corrected for NLTE; Andrievsky et al. (2010) computed NLTE corrections of the

<sup>2</sup> Taken from the authors' web-based database, [www.inspect-stars.com](http://www.inspect-stars.com).

**Table 6.** Abundance results for the CH star, the CEMP-s star, and the metal-rich bulge giant.

Element <sup>a</sup>	10464			27793			14135		
	[X/Fe]	$\sigma$	<i>N</i>	[X/Fe]	$\sigma$	<i>N</i>	[X/Fe]	$\sigma$	<i>N</i>
Fe I	-1.53	0.20	94	-2.52	0.15	54	-0.01	0.22	145
Fe II	-1.52	0.10	8	-2.52	0.11	4	0.00	0.38	19
C I	0.41	...	synth	1.44	...	synth	0.00	...	synth
Na I <sup>LTE</sup>	0.54	0.06	4	0.51	0.17	4	0.20	0.23	3
Na I <sup>NLTE</sup>	0.01	0.12	4	0.14	0.22	4	0.03	0.24	3
Mg I	0.49	0.15	4	0.63	0.40	4	0.17	0.08	6
Si I	0.58	0.08	2	...	...	0	0.21	0.26	19
Ca I	0.19	0.22	17	0.42	0.28	12	-0.01	0.26	11
Sc II	0.00	0.12	4	0.13	0.11	2	0.05	0.24	5
Ti I	0.37	0.27	14	0.42	0.14	6	0.03	0.25	31
Ti II	0.09	0.10	12	0.39	0.06	8	-0.05	0.36	12
V I	-0.18	...	1	...	...	0	0.05	0.15	6
Cr I	-0.28	0.10	6	-0.22	0.27	6	-0.04	0.28	11
Cr II	-0.11	...	1	...	...	0	0.07	0.02	2
Mn I	-0.26	0.29	6	-0.33	0.19	4	-0.01	0.23	6
Co I	0.04	0.13	3	0.02	0.17	3	-0.13	0.10	3
Ni I	0.03	0.20	5	0.08	0.17	3	0.08	0.25	36
Zn I	0.31	0.03	2	0.35	...	1	...	...	0
Rb I	1.29	...	synth	...	...	0	0.10	...	synth
Sr I	0.59	...	1	0.59	...	1	-0.09	...	1
Sr II	0.84	0.05	2	0.58	0.16	2	...	...	0
Y II	0.46	0.14	3	0.51	0.27	5	0.13	0.11	2
Zr II	0.30	...	synth	0.81	...	synth	...	...	0
Ba II	1.35	0.01	2	1.31	0.17	6	0.03	0.07	3
La II	0.92	0.20	3	1.29	0.13	3	...	...	0
Nd II	1.13	0.08	2	1.18	0.02	2	...	...	0
Eu II	0.37	...	1	...	...	0	...	...	0

**Notes.** <sup>(a)</sup> Ionised species are given relative to Fe II. Abundance ratios are listed relative to iron, except for Fe I and Fe II (relative to H) and Li.

order 0.2–0.4 dex (in the sense LTE–NLTE) for halo stars of similar stellar parameters, albeit at metallicities lower by  $\sim 1$  dex.

Figure 1 indicates that our [Mg/Fe] is higher (by  $\sim 0.15$  dex) than the Roederer et al. (2014) halo sample, at a mean of 0.51 dex and a low  $1\sigma$  dispersion of 0.07 dex. It is also important to note that *r*-process rich bulge star from Johnson et al. (2013) resembles our metal-poor bulge sample more than it does the halo stars. Differences in the *gf*-values between Roederer’s and our sample cannot account for more than 0.02 dex in the abundances, while the use of damping constants of Barklem et al. (2000)<sup>3</sup> vs. the standard Unsöld (1955) approximation, leads to Mg abundances lower by  $\sim 0.06$  dex.

Ionisation balance is also fulfilled for Ti in that the abundances of its neutral and ionised species agree to within, with 0.05 dex ( $1\sigma$  dispersion of 0.11 dex).

Most  $\alpha$ -element abundances in the regular sample stars follow the distributions on the metal-poor halo plateau in lockstep remarkably well. In particular we find mean values for [Si,Ca,Ti/Fe] of 0.55, 0.36, and 0.33 dex, respectively, if we exclude the metal-rich star 14135. Also, the low dispersion amongst the sample is noteworthy, where we observe a  $1\sigma$ -scatter in these elements of 0.07, 0.04, 0.09, and 0.08 dex. This low scatter pertains even when including the two stars with large overabundances of C and the *s*-process elements, which merely reflects that the production of the  $\alpha$ -elements is fully detached from the AGB-nucleosynthesis involved in the pollution of the CEMP-*s* and CH stars’s atmospheres.

This conformity was not seen amongst the four metal-poor bulge candidates analysed by Howes et al. (2014), where one

star has an abnormally high Ti abundance (see the blue squares in Figs. 1–5), while the most metal-poor candidates by Casey & Schlafman (2015) show very low scatter, as for our stars. Furthermore, Howes’ et al. (2014) spectra revealed a broad range in Mg abundances, spanning across 0.7 dex from sub-solar values to several dex above the halo plateau.

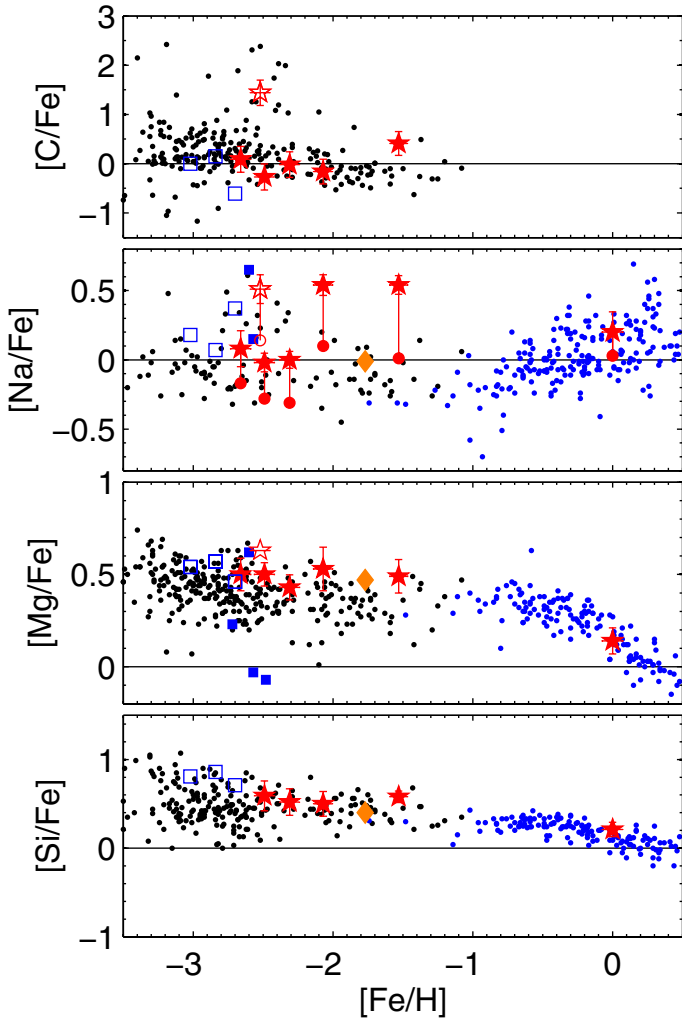
One might argue that the metal-rich giant 14135 could be associated with the Galactic thin or thick disk, given its high, solar metallicity. As Fig. 1 indicates, however, its [Mg/Fe] ratio is elevated, at 0.17 dex, and is consistent with Johnson’s et al. (2014) sample that shows [Mg/Fe] = 0.14 dex around solar metallicity, providing chemical evidence for an association with the metal-rich bulge (see also Fulbright et al. 2007).

#### 4.5. Scandium: no evidence for Population III enrichment

For Sc, our seven target stars display abundances that lie at the Solar value (at a mean and  $1\sigma$  dispersion of 0.00 and 0.08 dex, respectively), in line with the Galactic halo. A number of studies have claimed  $\sim 0.2$  dex [Sc/Fe] enhancements in metal-poor stars of the MW halo and thick and thin disks (e.g., Zhao & Magain 1990; Nissen et al. 2000; Carretta et al. 2002; Cohen et al. 2004; Brewer & Carney 2006; Reddy et al. 2006). However, it has been pointed-out that errors in log *gf* values and/or the treatment of hyperfine structure (e.g., Gratton & Sneden 1991; Prochaska & McWilliam 2000) may explain such putative [Sc/Fe] enhancements.

Because most of our stars scatter about the normal halo [Sc/Fe] trend with [Fe/H], the slightly elevated [Sc/Fe] enhancement to 0.13 dex for star 27793 cannot be due to spurious log *gf* values. The Sc II lines in our program stars are weak and

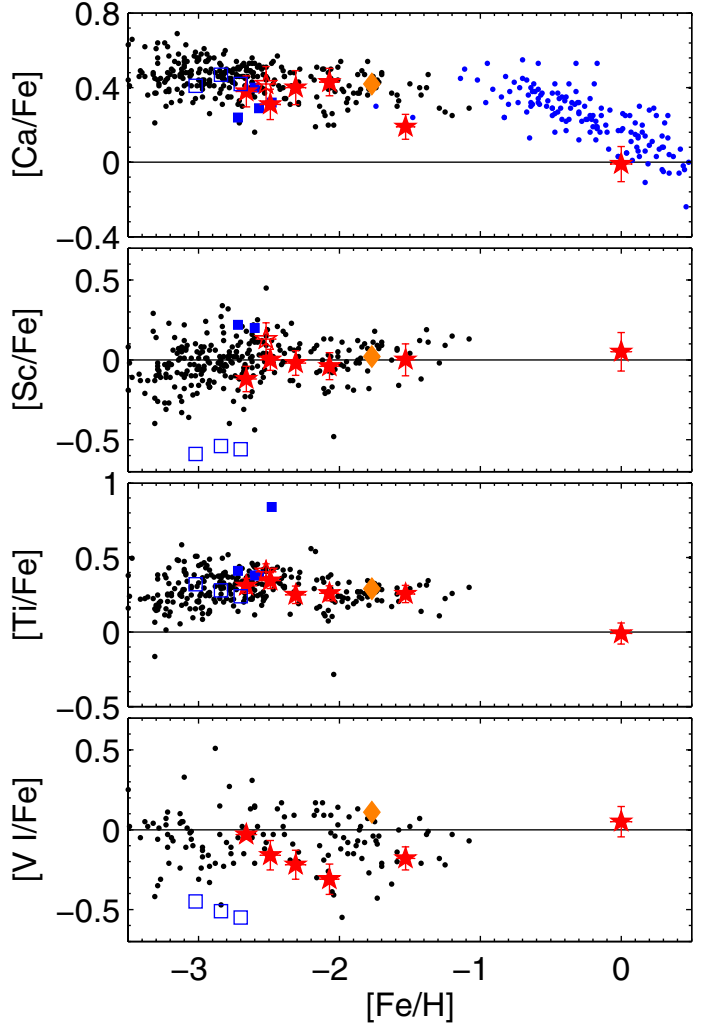
<sup>3</sup> These are, however, only available for a subset of our lines.



**Fig. 1.** Abundance results for C, Na, Mg, and Si. Our results are shown as red star symbols, where the open star singles out the CEMP-star 27793. For Na, NLTE abundances are also shown by red circles. Error bars account for random and systematic uncertainties. We also include the metal-poor bulge candidates of Howes et al. (2014; filled blue squares) and Casey & Schlafman (2015; open blue squares), the  $r$ -process enriched bulge star from Johnson et al. (2013b; orange diamond), and blue points designate the bulge sample of Johnson et al. (2012, 2014). Finally, black dots are halo stars from Roederer et al. (2014), while black triangles are upper limits from that study. Note that their sample extended as metal-poor as  $[\text{Fe}/\text{H}] = -4.6$  dex, but we truncated the axis for better readability.

unsaturated, on the linear portion of the curve of growth, so any hyperfine splitting effects are very small and not likely to produce markedly different results for an individual star. Likewise, we ascertained that none of the lines used in the CEMP star was blended with, generally strong,  $\text{C}_2$  and CH lines.

It is important to emphasise that the  $[\text{Sc}/\text{Fe}]$  ratios of our stars are similar to those in outer MW halo stars (e.g., Gratton & Snenen 1991; McWilliam 1995; Roederer et al. 2014). This is in stark contrast to the extremely low  $[\text{Sc}/\text{Fe}]$  ratios predicted for massive Population III SNe by, e.g., Nomoto et al. (2006) and Heger & Woosley (2010), and to the recent observation of such depletions in bulge stars by Casey & Schlafman (2015). Simulations by, e.g., Diemand et al. (2005) and Tumlinson (2010) predicted that the fraction of these first, massive stars should peak in the bulge and inner, central halo ( $R_{\text{GC}} \lesssim 3$  kpc) of the Galaxy. Even though our metal-poor stars are located in these



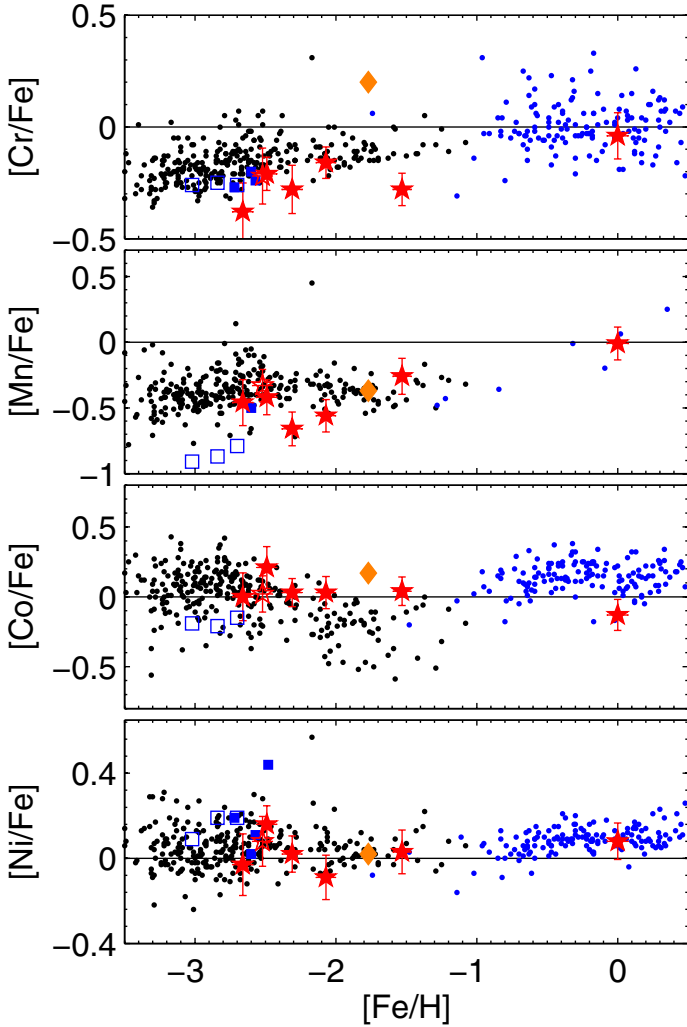
**Fig. 2.** Same as Fig. 1, but for Ca, Sc, Ti, and V.

central regions (note that three of the stars lie within 3 kpc of the Galactic centre; see Sect. 6.2), we thus find no evidence that they had been enriched by massive Population III nucleosynthesis.

#### 4.6. Fe-peak: V, Cr, Mn, Co, Ni, Zn

Elements of the iron-peak are made by supernovae of both Type Ia and Type II (henceforth SNe Ia and SNe II, respectively). However, for the MW thin disk, at solar metallicity, it is thought that roughly 2/3 of iron-peak elements are produced by SNe Ia and 1/3 by SNe II. The abundance ratios we derived in our sample of bulge stars bear little surprise in comparison with halo stars of similarly low metallicity and, as for the  $\alpha$ -elements, we note a remarkable homogeneity in the iron-peak across the covered metallicity range.

Thus, we find sub-solar  $[\text{X}/\text{Fe}]$  abundance ratios for V, Cr, and Mn. The sub-solar  $[\text{Cr}/\text{Fe}]$  values found here are consistent with the trend of low  $[\text{Cr}/\text{Fe}]$  in metal-poor halo stars, initially found in the LTE abundance study of McWilliam et al. (1995), but also seen in the results of Cayrel et al. (2004) and Roederer et al. (2014); notably, our  $[\text{Cr}/\text{Fe}]$  values populate the lower edge of the trend of Roederer et al. (2014). These LTE results follow a seemingly consistent trend of declining  $[\text{Cr}/\text{Fe}]$  with decreasing  $[\text{Fe}/\text{H}]$ , from solar metallicity, as nicely shown by Cohen et al. (2004).



**Fig. 3.** Same as Fig. 1, but for Cr, Mn, Co, and Ni. Bulge data for Mn were taken from McWilliam et al. (2003).

However, a NLTE analysis of Cr in metal-poor, warm dwarfs by Bergemann & Cescutti (2010), led them to conclude that the deficiencies found in LTE analyses could be explained by NLTE effects, rather than genuine deficiencies in  $[\text{Cr}/\text{Fe}]$ . This conclusion is supported by the lack of ionisation equilibrium obtained in this study: from our single Cr II line we find  $[\text{Cr I}/\text{Cr II}] = -0.19$  dex here (similar to the typical NLTE correction of Bergemann & Cescutti 2010); thus, our  $[\text{Cr II}/\text{Fe II}]$  points lie close to the solar ratio.

Star 10464, while exhibiting a low  $[\text{Cr}/\text{Fe}]$  ratio, appears significantly below the general trend of  $[\text{Cr}/\text{Fe}]$  versus  $[\text{Fe}/\text{H}]$ , described above. Star 10464 is a relatively hot, metal-poor star, hotter than the rest of our sample, with  $T_{\text{eff}} = 5500$  K; thus, it seems possible that NLTE over-ionisation of Cr may be enhanced in this star, leading to its lower than expected LTE  $[\text{Cr}/\text{Fe}]$  ratio. We further discuss star 10464 in Sect. 5.1.

The fact that the  $[\text{Mn}/\text{Fe}]$  ratios in bulge stars follow the trend of the Galactic disks led McWilliam et al. (2003) to conclude that Mn is produced in SNe Ia and SNe II with metallicity-dependent yields. Here we note a similarly good agreement between the  $[\text{Mn}/\text{Fe}]$  ratios in the Galactic halo and the metal-poor bulge candidates.

While our  $[\text{V I}/\text{Fe I}]$  abundance ratios all lie below the solar value, at  $-0.18$  dex, they fall within the scatter of  $[\text{V}/\text{Fe}]$  ratios, from V I lines, measured in the survey of Roederer et al. (2014),

which are on average sub-solar, near  $-0.15$  dex. However, abundances derived by Roederer et al. (2014) from V II lines are enhanced, relative to solar, by  $\sim 0.2$  dex; the difference between V I and V II line abundances might be expected from NLTE over-ionisation of neutral vanadium. In this work we detected a single V II line in two program stars, yielding  $[\text{V II}/\text{Fe}] = -0.02$  dex; these two V II detections could be explained by noise, or a genuine enhancement of V II over V I due to NLTE over-ionisation of V I.

On the other hand, the recently improved V I and V II line  $gf$  values by Lawler et al. (2014) and Wood et al. (2014) that we employ in this work resulted in consistent  $[\text{V}/\text{Fe}]$  abundance ratios for the Sun and a metal-poor star: neutral and ionised line  $[\text{V}/\text{Fe}]$  ratios of  $+0.25$  and  $+0.24$  dex, respectively, were found for HD84937 with  $[\text{Fe}/\text{H}] = -2.32$ . Thus the new line  $gf$  values indicate a slight enhancement in  $[\text{V}/\text{Fe}]$  at low metallicity. Clearly, the choice of  $gf$  values is critical for determining the vanadium ionisation equilibrium and  $[\text{V}/\text{Fe}]$  at low metallicity. Notwithstanding, our results appear consistent with previous studies.

Cobalt in all stars is solar to moderately elevated, although we do not trace the slightly decreasing trend, towards higher metallicity, commencing at  $\sim -2$  dex, seen in the Roederer et al. (2014) data. The  $[\text{Co}/\text{Fe}]$  trend in the Roederer et al. (2014) data roughly follows the same trend found by McWilliam et al. (1995), and seen by Cayrel et al. (2004), but to higher  $[\text{Fe}/\text{H}]$ , where the  $[\text{Co}/\text{Fe}]$  ratios continue lower. Our Co enhancement is, however, driven by the CH star 10464 with a  $[\text{Co}/\text{Fe}]$  value that is higher than seen in halo stars. Here, we carefully checked that none of the lines we used (at 3995, 4118, 4121 Å) suffered from blends with near-by CH- or C<sub>2</sub>-bands. NLTE corrections for Co are large: Bergemann et al. (2010) estimate departures of Co (NLTE–LTE) of  $+0.4$  dex on average for dwarfs and up to  $+0.64$  dex in  $[\text{Co}/\text{Fe}]$  for the one metal-poor giant in their sample with parameters similar to our stars. The maximum line-by-line deviation can even be higher, with corrections up to 0.9 dex for the case of the 4121 Å line that we also employed in our analysis. However, we note that applying NLTE corrections increases the  $[\text{Co}/\text{Fe}]$  ratios to well above the solar value, in the same sense as the enhancements found by McWilliam et al. (1995) and Cayrel et al. (2004).

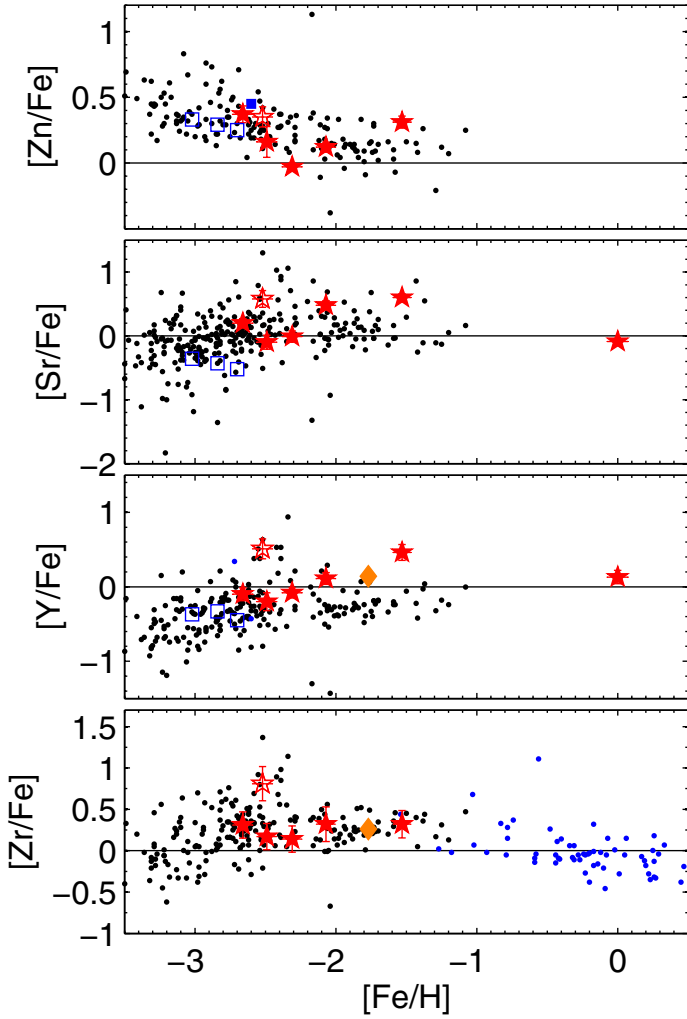
As is found throughout all main Galactic components Ni is scattered around the value solar (at a mean  $[\text{Ni}/\text{Fe}]$  of 0.03 dex with a  $1\sigma$  scatter of 0.09 dex), which merely reflects the common production of Ni and Fe in the SNe Ia. Finally, Zn abundances were derived from two lines of moderate strength at 4722 and 4810 Å. While Zn is often associated with the heaviest Fe-peak elements to be formed in core-collapse SNe, an increase of the  $[\text{Zn}/\text{Fe}]$  ratio with decreasing metallicity (e.g., Johnson & Bolte 2001; Cayrel et al. 2004; Honda et al. 2011) has prompted suggestions that Zn could also have contributions from neutron-capture processes in the main  $s$ -process (e.g., Baraffe et al. 1992) or in energetic hypernovae (e.g., Umeda & Nomoto 2002). This trend is also visible in our data below an  $[\text{Fe}/\text{H}]$  of  $-2.3$  dex.

#### 4.7. Neutron-capture elements: Sr, Y, Zr, Ba, La, Eu

All of the elements formed in the slow ( $s$ -) and rapid ( $r$ -) neutron-capture processes are fully compatible with the halo distributions (Figs. 4 and 5), except for the two stars that are strongly enhanced in  $s$ -process elements (10464 and 27793).

For the case of Zr we obtained abundances from spectral synthesis of three well-defined, unblended lines (4161,



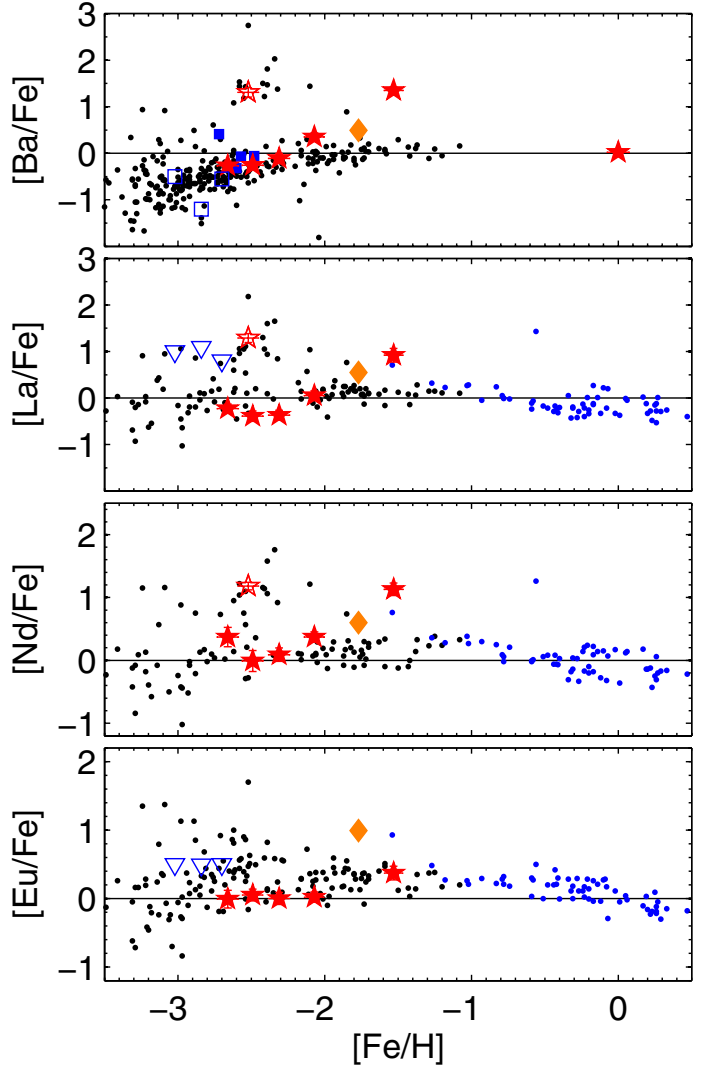


**Fig. 4.** Same as Fig. 1, but for Zn, Sr, Y, and Zr. Here, the comparison sample for the bulge has been taken from Johnson et al. (2012).

4208, 4496 Å). Their best-fit abundances agreed well to within 0.15 dex, which we adopt as statistical error on the Zr/Fe ratios. We determined Sr abundances from the two resonance lines at 4077 and 4215 Å, which are generally strong and yield consistent results. NLTE corrections to Sr were calculated by Hansen et al. (2013) and are on the order of 0.07 dex, albeit with a sign that is dependent on the exact stellar parameters.

The Ba abundances we found for our sample strikingly follows the trend of metal-poor halo stars, except for the outlying CEMP-*s* star 27793 and the *s*-rich star 10464, which both show strong enhancements, likely due to mass transfer of the *s*-process enhanced material from an AGB companion (Sect. 5). Andrievsky et al. (2009) computed NLTE corrections for Ba for the same sample as for Sr and estimate corrections 0.25 dex with opposite signs for the HB stars. Note, however, that these levels of corrections are probably inappropriate for the strongly enhanced stars.

Values for the [Eu/Fe] abundance ratio could only be derived from the 4129 Å-line, since all other possible transitions are very weak and/or heavily blended (Mashonkina & Christlieb 2014; Hansen et al. 2015). As a result, we find [Eu/Fe] ratios that are Solar throughout the sample, with only a mild indication of an enhancement in the CH star 10464. This mean value of [Eu/Fe] for our stars, at 0.1 dex ( $1\sigma$  scatter of 0.16 dex), is surprisingly low, contrasting with the typical halo enhancement



**Fig. 5.** Same as Fig. 4, but for Ba, La, Nd, and Eu. Here, open blue triangles indicate that upper limits on the measurements from Casey & Schlafman (2015).

near +0.4 dex seen in the Roederer et al (2014) data, and found by Fulbright (2000; see also Woolf et al. 1995). The low [Eu/Fe] ratios may be due to a genuine deficiency of *r*-process elements, perhaps due to fewer sources. Alternatively, most of the stellar atmosphere material in our program stars may have experienced slow neutron-capture; note that, due to its large neutron-capture cross section, a very mild *s*-processing could drastically reduce the Eu abundance without greatly affecting the abundances of other *s*-process elements. Whatever the explanation, we might expect similar deficiencies of other *r*-process elements in these stars.

The [Ba/Eu] ratio of the MW halo, in Fig. 6, shows a clear trend of increasing *s*-process fraction with increasing [Fe/H] (see also Simmerer et al. 2004), which adds Ba but no significant Eu. This may be due to contributions from progressively longer-lived AGB stars, or arise from the metal-dependence of the weak *s*-process from massive stars. Naturally, the CH star in our sample stands out at [Ba/Eu] = 0.98, similar to the mean of *s*-process enhanced halo stars in Roederer et al. (2014). The [Ba/Eu] ratios in our sample are generally slightly enhanced compared to the MW halo points, the same holds for the [ $\alpha$ /Eu] ratios. This might signal that our Eu abundances are

**Table 7.** Systematic error analysis for the red giant 17221 and the HB star 10464.

Ion	$\Delta T_{\text{eff}}$	$\Delta \log g$	$\Delta \xi$	$\Delta [M/H]$	ODF	$\sigma_{\text{tot}}$	$\Delta T_{\text{eff}}$	$\Delta \log g$	$\Delta \xi$	$\Delta [M/H]$	ODF	$\sigma_{\text{tot}}$
	$\pm 50$ K	$\pm 0.15$ dex	$\pm 0.1$ km s <sup>-1</sup>	$\pm 0.1$ dex			$\pm 50$ K	$\pm 0.15$ dex	$\pm 0.1$ km s <sup>-1</sup>	$\pm 0.1$ dex		
	17221						10464					
Fe I	$\pm 0.06$	$\mp 0.02$	$\mp 0.03$	$< 0.01$	0.01	0.07	$\pm 0.05$	$< 0.01$	$\mp 0.03$	$< 0.01$	0.01	0.06
Fe II	$< 0.01$	$\pm 0.05$	$\mp 0.03$	$< 0.01$	-0.01	0.06	$< 0.01$	$\pm 0.06$	$\mp 0.03$	$< 0.01$	-0.01	0.07
A(Li)	$\pm 0.06$	$< 0.01$	$< 0.01$	$< 0.01$	$< 0.01$	0.06	...	...	...	...	...	...
C I	$\pm 0.11$	$\mp 0.08$	$< 0.01$	$\mp 0.09$	-0.18	0.17	$\pm 0.10$	$\mp 0.06$	$< 0.01$	$\mp 0.08$	-0.04	0.14
Na I	$\pm 0.06$	$\pm 0.02$	$\pm 0.02$	$< 0.01$	$< 0.01$	0.06	$\pm 0.05$	$\mp 0.01$	$\mp 0.03$	$\mp 0.01$	$< 0.01$	0.06
Mg I	$\pm 0.05$	$\mp 0.03$	$\mp 0.02$	$< 0.01$	$< 0.01$	0.06	$\pm 0.04$	$< 0.01$	$\mp 0.03$	$< 0.01$	$< 0.01$	0.05
Si I	$\pm 0.04$	$\mp 0.02$	$\mp 0.01$	$< 0.01$	$< 0.01$	0.05	$\pm 0.02$	$< 0.01$	$\mp 0.01$	$< 0.01$	$< 0.01$	0.03
Ca I	$\pm 0.04$	$\mp 0.02$	$\mp 0.01$	$\pm 0.01$	$< 0.01$	0.05	$\pm 0.03$	$< 0.01$	$\mp 0.02$	$< 0.01$	-0.01	0.04
Sc II	$\pm 0.02$	$\pm 0.05$	$\mp 0.02$	$< 0.01$	-0.01	0.06	$\pm 0.03$	$\pm 0.06$	$\mp 0.04$	$\pm 0.01$	-0.01	0.08
Ti I	$\pm 0.07$	$\mp 0.02$	$\mp 0.01$	$< 0.01$	0.01	0.07	$\pm 0.06$	$< 0.01$	$\mp 0.02$	$< 0.01$	-0.01	0.06
Ti II	$\pm 0.02$	$\pm 0.04$	$\mp 0.01$	$< 0.01$	0.01	0.05	$\pm 0.02$	$\pm 0.05$	$\mp 0.02$	$< 0.01$	-0.02	0.06
V I	$\pm 0.07$	$\mp 0.02$	$< 0.01$	$< 0.01$	0.02	0.07	$\pm 0.06$	$\pm 0.01$	$< 0.01$	$< 0.01$	$< 0.01$	0.06
V II	$\pm 0.01$	$\pm 0.04$	$\mp 0.01$	$< 0.01$	0.01	0.05	$\pm 0.02$	$\pm 0.05$	$\mp 0.03$	$< 0.01$	-0.01	0.06
Cr I	$\pm 0.06$	$\mp 0.01$	$\mp 0.01$	$< 0.01$	0.01	0.06	$\pm 0.05$	$\mp 0.01$	$\mp 0.02$	$< 0.01$	$< 0.01$	0.06
Cr II	$\mp 0.01$	$\pm 0.04$	$< 0.01$	$< 0.01$	0.01	0.04	$< 0.01$	$\pm 0.05$	$\mp 0.02$	$< 0.01$	-0.01	0.06
Mn I	$\pm 0.06$	$\mp 0.03$	$\mp 0.03$	$< 0.01$	0.02	0.08	$\pm 0.06$	$\mp 0.01$	$\mp 0.04$	$< 0.01$	0.01	0.07
Co I	$\pm 0.07$	$\mp 0.03$	$\mp 0.05$	$< 0.01$	0.02	0.09	$\pm 0.06$	$< 0.01$	$\mp 0.04$	$< 0.01$	$< 0.01$	0.07
Ni I	$\pm 0.06$	$\mp 0.02$	$\mp 0.02$	$< 0.01$	0.02	0.07	$\pm 0.05$	$\pm 0.01$	$\mp 0.02$	$< 0.01$	$< 0.01$	0.05
Zn I	$\pm 0.02$	$\pm 0.02$	$< 0.01$	$< 0.01$	$< 0.01$	0.03	$\pm 0.03$	$\pm 0.01$	$\mp 0.02$	$< 0.01$	-0.01	0.04
Rb I	...	...	...	...	...	...	$\pm 0.03$	$< 0.01$	$< 0.01$	$< 0.01$	$< 0.01$	0.04
Sr I	...	...	...	...	...	...	$\pm 0.05$	$\mp 0.01$	$\mp 0.01$	$< 0.01$	$< 0.01$	0.05
Sr II	$\pm 0.04$	$< 0.01$	$\mp 0.06$	$< 0.01$	$< 0.01$	0.07	$\pm 0.04$	$\pm 0.03$	$\mp 0.02$	$\pm 0.01$	-0.02	0.06
Y II	$\pm 0.03$	$\pm 0.04$	$\mp 0.02$	$< 0.01$	0.01	0.05	$\pm 0.02$	$\pm 0.05$	$\mp 0.04$	$< 0.01$	-0.01	0.07
Zr II	$\pm 0.03$	$\pm 0.04$	$\mp 0.01$	$< 0.01$	$< 0.01$	0.05	$\pm 0.03$	$\pm 0.05$	$\mp 0.03$	$\pm 0.01$	-0.02	0.07
Ba II	$\pm 0.03$	$\pm 0.04$	$\mp 0.04$	$< 0.01$	-0.01	0.07	$\pm 0.05$	$\pm 0.04$	$\mp 0.06$	$< 0.01$	-0.01	0.08
La II	$\pm 0.03$	$\pm 0.04$	$< 0.01$	$< 0.01$	0.01	0.05	$\pm 0.03$	$\pm 0.05$	$\mp 0.07$	$< 0.01$	-0.01	0.09
Nd II	$\pm 0.03$	$\pm 0.04$	$< 0.01$	$< 0.01$	0.01	0.05	$\pm 0.04$	$\pm 0.05$	$\mp 0.05$	$< 0.01$	-0.01	0.08
Eu II	$\pm 0.03$	$\pm 0.04$	$< 0.01$	$< 0.01$	-0.01	0.05	$\pm 0.03$	$\pm 0.05$	$< 0.01$	$< 0.01$	-0.01	0.06

systematically too low. Whether these low Eu abundances are real or spurious is important; if real, they signal a difference between our metal-poor stars and the halo.

Given the relatively high degree of homogeneity of most of the sample stars ( $1\sigma$  spread of 0.25–0.50 dex over almost 0.7 dex in  $[\text{Fe}/\text{H}]$ ) we show in Fig. 7 the average of the neutron-capture abundances of the “regular” stars, i.e., excluding the CH-, CEMP-*s*-, and the metal-rich stars in our sample. Thus the heavy element distribution in our sample metal-poor bulge candidates shows strong resemblance to the Solar-scaled  $r + s$  distribution, with the exception of La and possibly Y, which show a preponderance of  $r$ -processed material. This is also bolstered by the comparison with the metal-poor standard star HD 122563, the neutron-capture elements of which are dominated by the weak  $r$ -process (see grey-shaded areas in Fig. 7).

## 5. Notes on individual, peculiar stars

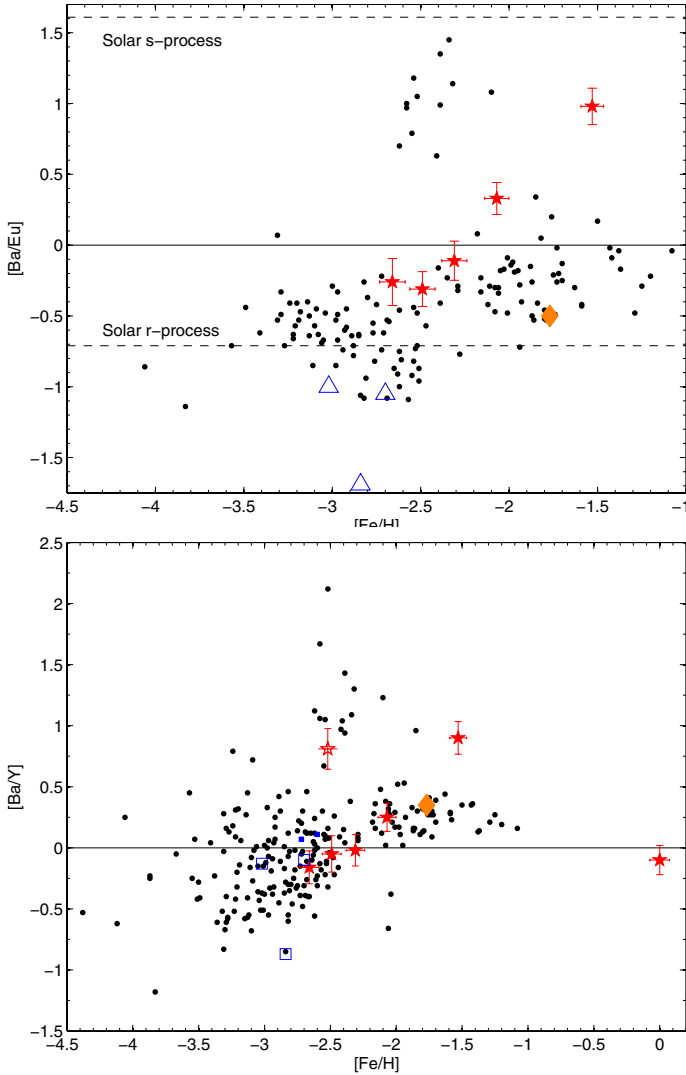
Here we describe the two stars with abundance peculiarities that stand out from the regular halo stars: 10464 with strong  $s$ -process enhancements, and the CEMP-*s* star 27793.

### 5.1. The CH star 10464

The most commonly used Ba lines are very strong in this star, with EWs in excess of 250 mÅ, and are thus not on the linear part of the curve of growth. While they still give consistent results (at a  $1\sigma$  deviation of 0.17 dex for all 6 lines), we adopt here the abundance based on only the two “weakest” lines at 4130 Å (EW of 118 mÅ) and 5853 Å (176 mÅ), yielding a

[Ba/Fe] ratio of +1.35 dex. Barium stars were first identified by Bidelman & Keenan (1951) and show typical overabundances in  $s$ -process elements of 0.6 to  $\sim 2$  dex (e.g., Allen & Barbay 2006). These objects also show strong CH and CN features and, coupled with the low metallicity of star 10464 of  $-1.53$  dex, this object rather qualifies as a Population II CH star (Keenan 1942). The carbon abundance in 10464 is only mildly enhanced to  $[\text{C}/\text{Fe}] = 0.41$  dex; furthermore, the absence of the C<sub>2</sub> band heads at 5635 and 5165 Å indicate that the C/O ratio is less than unity, and that this star is not a C-star. We note that the stellar parameters of 10464 are very similar to the high-velocity halo CH star CD-62°1346 (Pereira et al. 2012).

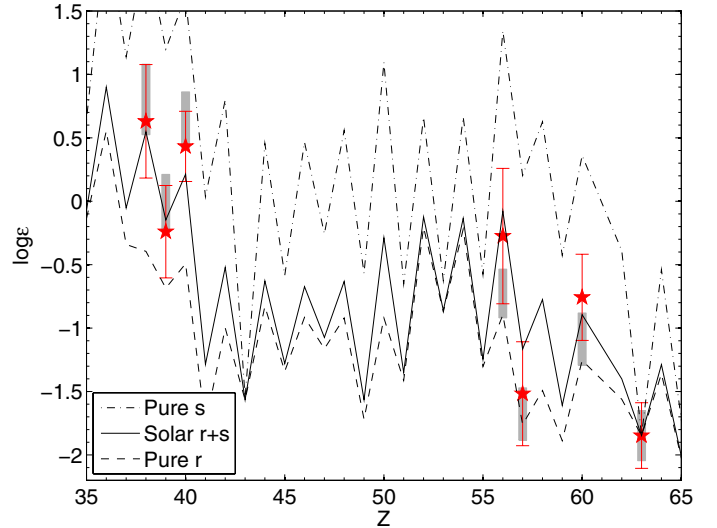
The classical explanation for strong  $s$ -process enhancements in stars that are not evolved enough to have produced these elements, is mass-transfer from an AGB companion, the remnant of which could still be present in a binary system in the form of a white dwarf. We could not detect any evidence for radial velocity variations over the 24 h of observations, which is, however, clearly too short a time baseline, given the typical periods of Ba- and CH stars well in excess of 100 days (e.g., McClure & Woodsworth 1990; Karakas et al. 2000). Likewise, no information on a possible companion is seen in the spectra or the cross-correlation function of this star, which would reveal its binarity. The comprehensive abundance distribution enables, in principle, constraints on the AGB polluter’s progenitor mass (e.g., Busso et al. 2001; Husti et al. 2009). We attempted a comparison with the f.r.u.i.t.y. data base (Cristallo et al. 2011), where we chose models representing the metallicity of 10464. An important tracer for the progenitor mass is the [Rb/Zr] ratio, which, at  $0.99 \pm 0.22$  dex, is very high in this star and which indicates pollution by  $\sim 4 M_{\odot}$  AGB stars (e.g., McWilliam et al. 2013). The



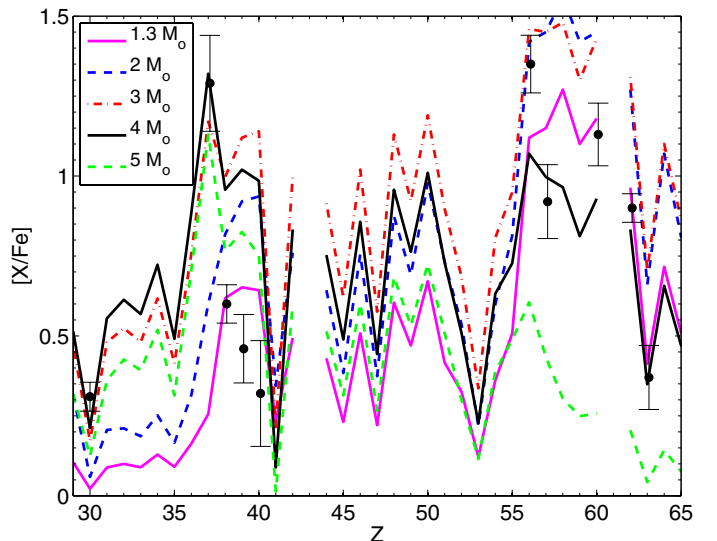
**Fig. 6.** *Top panel:*  $[\text{Ba}/\text{Eu}]$  as a tracer of the  $s/r$ -ratio. While we measure systematically higher Eu abundances in the bulge star of Johnson (2013b, yellow diamond), the transition from  $r$ - to  $s$ -process dominated material is clearly seen. The dashed lines are the solar components from Burris et al. (2000). The *bottom panel* shows the  $[\text{Ba}/\text{Y}]$  as a proxy for the  $[l_s/h_s]$  ratio. The symbols are the same as in the previous figures.

detailed comparison in Fig. 8, however, reflects the complexity of further parameters governing the AGB nucleosynthesis, such as treatment of the  $^{13}\text{C}$  pocket or the dilution factors. In particular, we find a high  $[hs/l_s] = [\langle \text{Ba, La, Nd} \rangle / \text{Fe}] - [\langle \text{Rb, Sr, Y, Zr} \rangle / \text{Fe}]$  ratio of 0.41 dex, and relatively low abundances of La and Y. While we do not expect any alterations of the surface abundances during the evolution towards the HB that 10464 could have experienced, small enhancements of elements with overabundances of a few tenths of a dex could be caused by dilution of the AGB products with the pre-existing material.

Lebzelter et al. (2013) detected the first two barium stars known in the bulge, from which they estimate an occurrence rate of  $\sim 1\%$ , a value compatible with the frequency found in the Galactic disks. Johnson et al. (2012) identify a few stars with increased heavy element abundances, however, their most extreme star is consistent with dominant  $r$ -process nucleosynthesis (Johnson et al. 2013). Thus star 10464 would establish the first known CH star in the Galactic bulge.



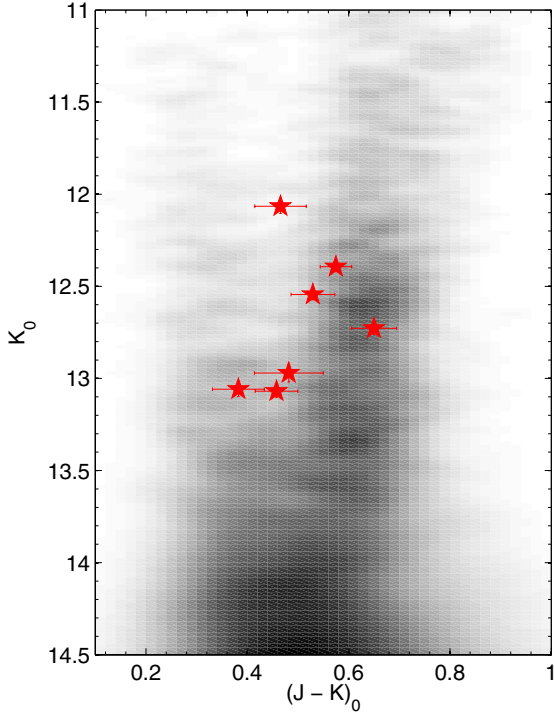
**Fig. 7.** Mean neutron capture element abundances to the exclusion of the CH star, the CEMP- $s$  star, and the metal-rich giant. The errorbars represent the star-to-star scatter. Also shown are the Solar  $r$ - and  $s$ -process contributions from Simmerer et al. (2004). Grey-shaded areas indicate the  $1\sigma$  abundance ranges of the weak- $r$ -process star HD 122563 from Honda et al. (2006). All curves were normalised to Eu.



**Fig. 8.** Heavy element ratios in the CH star 10464 in comparison with low-metallicity ( $Z = 0.0003$ ) AGB models by Cristallo et al. (2011) for different progenitor masses.

## 5.2. The CEMP- $s$ star 27793

Similar to the CH star 10464, just discussed, the most likely origin of the carbon- and  $s$ -process overabundances in 27793, a CEMP star, is mass transfer from the envelope of an AGB binary companion (Preston & Sneden 2001; Lucatello et al. 2005); in fact the barium-, CH-, and CEMP- $s$  stars are often identified as the same subclasses of mass-transfer stars that differ only by their metallicity (e.g., Masseron et al. 2010). Neither in star 27793 could we detect any radial velocity variations, although the observations covered only 1.8 h, which is far shorter than typical orbital periods (e.g., Preston & Sneden 2001). In the Galactic halo, 80% of the CEMP stars show strong enrichments in the  $s$ -process elements (Aoki et al. 2007), although the numbers differ when separated into inner and outer halo (Carollo et al. 2014). Norris et al. (2013) determined that the metallicity



**Fig. 9.** Hess diagram from the 2MASS. Our targets are highlighted as error bars.

distribution of the CEMP-*s* stars peaks at  $-2.5$  dex, which is identical to the value we found for the bulge-candidate 27793.

We can ask whether the level of C-enhancement is typical of a star of this metallicity. Spite et al. (2013) note that at metallicities above  $-3$  dex, the carbon abundance of CEMP stars is almost constant, irrespective of their sub-classification, and close to  $A(C) = 8.25$  (see also Masseron et al. 2010). At  $A(C) = 7.33$  dex, 27793 lies on the low side of the enhancement, but unmistakably qualifies as a CEMP star. This spectrum of 27793 shows very strong  $C_2$  band heads at 5165 and 5635 Å, clearly demonstrating that  $C/O > 1$  and confirming its C-star status.

The Eu line at 4129 Å is too deeply embedded in C-bands to be of any use. However, upper limits for the weaker *r*-process lines at 3819, 4205, 4522, 6645 Å (Eu, though blended) and 5169 Å (Dy) indicate that this star is not enhanced in material processed through *r*-process nucleosynthesis. Finally, we note that, given its favourable location, this would be the first CEMP star detected in the bulge (but see Sect. 6.2).

## 6. Membership with the bulge

### 6.1. Colour–magnitude diagrams

Figure 9 shows the location of our targets on the 2MASS CMD of the immediate, targeted bulge region. Two red clumps can be clearly seen, at  $K = 12.6$  and 13.3 mag and thus with a magnitude separation compatible with that reported for low latitudes by McWilliam & Zoccali (2010). As per our preselection criteria our target stars stand out as very blue objects, already hinting at their metal-poor nature against the contrasting metal-rich CMD of the main bulge population. Likewise, the two bluest stars in the sample are consistent with a characterisation as metal-poor RHB stars, although their very blue colours could also hint at them not being part of the bulge population.

**Table 8.** Positions and radial velocities.

Star	$R_{\odot}$ [kpc]	$X$ [kpc]	$Y$ [kpc]	$Z$ [kpc]	$v_{\text{rad}}$ [km s $^{-1}$ ]
14135	4.0 $\pm 0.9$	4.6 $\pm 0.8$	0.00 $\pm 0.01$	-0.8 $\pm 0.2$	-106.9
13971	9.8 $\pm 2.5$	-1.1 $\pm 2.3$	-0.06 $\pm 0.01$	-2.0 $\pm 0.5$	-87.42
17221	15.0 $\pm 3.2$	-6.1 $\pm 4.0$	-0.10 $\pm 0.03$	-3.1 $\pm 0.9$	30.26
24995	10.4 $\pm 2.7$	-1.6 $\pm 2.6$	-0.05 $\pm 0.01$	-2.2 $\pm 0.6$	70.36
27793	9.4 $\pm 2.4$	-0.7 $\pm 2.2$	+0.05 $\pm 0.01$	-1.8 $\pm 0.4$	-101.08
10464	15.6 $\pm 5.0$	-6.8 $\pm 5.1$	+0.13 $\pm 0.04$	-2.9 $\pm 0.9$	-27.60
37860	21.6 $\pm 5.0$	-12.7 $\pm 5.3$	-0.13 $\pm 0.03$	-4.1 $\pm 1.0$	-118.22

### 6.2. Spatial distribution

With our spectroscopic gravities at hand, we were able to derive distances to the stars, using the refined metallicity values that, in turn, allowed us to get a better estimate of the stellar masses by comparison to old, metal-poor isochrones (Dotter et al. 2008). Errors on the photometry and gravity were propagated into the distance uncertainties, which result on the order of 25%. One possible source of systematic error is our use of ionisation equilibrium to obtain the spectroscopic gravities. This thus required difference between Fe I and Fe II be sensitive to NLTE and the overall composition of the stars, which, in turn, affects the atmospheres' electron density (e.g., Koch & McWilliam 2008).

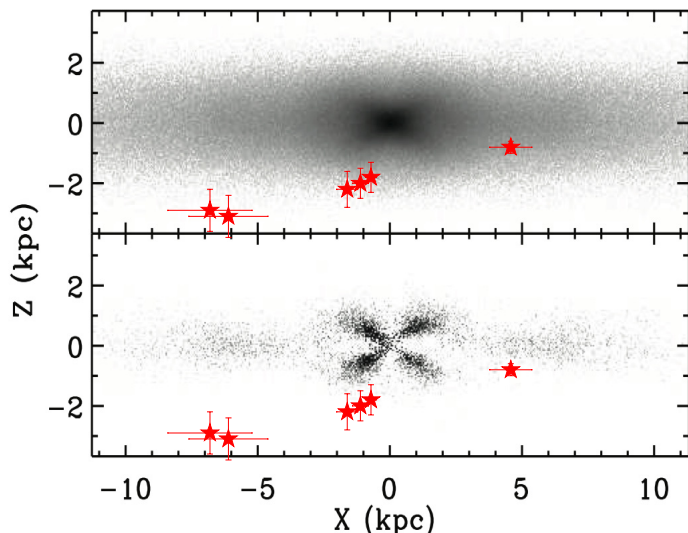
The resulting position of the stars in Galactic coordinates is shown in Fig. 10 and their distances are listed in Table 8. This assumes the distance from the Sun to the Galactic centre of  $R_{\text{GC}} = 8.34$  kpc (Reid et al. 2014).

Due to the selection of the fields, all targets lie at low Galactic latitudes ( $b \sim -11^\circ$ ), approximately 2–4 kpc below the plane of the MW, and within  $\sim 130$  pc of the minor axis. We found, however, a large spread in heliocentric distances to the stars, from 4.0–21.6 kpc. Accordingly, three objects (13971, 24995, and the CEMP-*s* star 27793) can be associated with locations in the southernmost, far-side of the bulge, whereas the most metal-rich object 14135 is situated at the near-side close to the plane. However, stars 17221 and the CH star 10464 lie at distances of  $\sim 15$  kpc, well beyond the bulge.

Figure 10 shows the stars on the model of the Galactic bulge of Li & Shen et al. (2012), who identified an X-shaped component in the bar/boxy bulge models of Shen et al. (2010) that matched the stellar observations of McWilliam & Zoccali (2010). The Shen et al. (2010) model was, in turn, tailored to reproduce the kinematic data of the Bulge Radial Velocity Assay (Howard et al. 2008; see also Wegg et al. 2015, their Fig. 1).

Li & Shen (2010) found an end-to-end separation of the modeled X in radial and vertical direction of 3 and 1.8 kpc, which deems it unlikely that *all* our targets would be part of the X-shaped structure. Furthermore, only 7% of the light is contained in the boxy-bulge region of the X-shape. The comparison of the derived locations of our stars with this model (Fig. 10) suggests that those four stars, if members of the bulge, are rather part of the smooth bar/boxy bulge population and not of the X.

At  $b = -11^\circ$  the double red clump discovered by McWilliam & Zoccali (2010) is very faint; accordingly, the bulge density has dropped off to very low values by this latitude. Moreover,



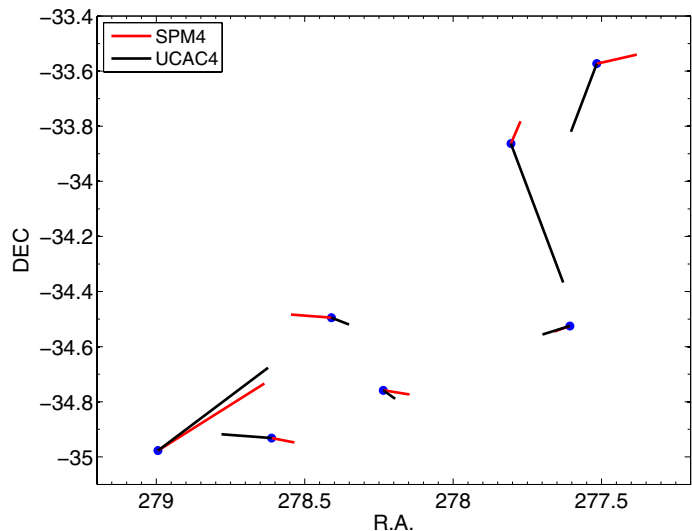
**Fig. 10.** Position of the target stars in Galactic coordinates, overlaid on the bar model (*top panel*) of Li & Shen (2012) and the residual X-shape after subtraction of the smooth bulge component (*bottom panel*) from the same model. Note that the HB star 37860 falls outside of the plotted regions.

more bulge stars are expected to be seen in the foreground X than the background X, due to the lower latitude (and higher density) of the foreground population, while we observe the opposite in that our stars peak behind the Galactic centre. This distribution can be explained by a centrally concentrated population in that the sample volume increases with distance, while the underlying density still has not dropped to significantly low values. In this line of reasoning, most of our stars were more likely to be halo stars, safe for the obvious member 14135, that can be associated with the bulge based on its high metallicity and abundance imprints.

Finally, we can characterise the underlying radial profile of our targets, under the assumption that they are all drawn from the same population, which we assume to be the inner halo in the following. Excluding star 14135, the cumulative radial distance distribution of the remaining six stars would be best described by a power-law with a power-law index of about  $-2.23$ . This is indeed similar to the decline of the stellar halo profile with power between  $-2$  and  $-4$  that is found from other tracers out to large radii (e.g., Morrison et al. 2000; Yanny et al. 2000; Sesar et al. 2011; Faccioli et al. 2014); note that Blanco & Terndrup (1989) already reported on a steep density profile  $\propto R_{\text{GC}}^{-3.65}$  for the inner spheroid. We caution, however, that this is clearly hampered by low-number statistics, in particular at Galactocentric distances outside of 5 kpc, and the largely uncertain selection function of our targets from an underlying, true, inner halo population.

### 6.2.1. Star 37860 and Sagittarius

The RHB star 37860 lies at 21.6 kpc to the observer, which rules out a physical connection with the bulge. Given this distance, its position within the Galaxy, and its low radial velocity of  $-118 \text{ km s}^{-1}$  it is plausible that 37860 is a member of the tidally disrupted Sagittarius (Sgr) dwarf galaxy (Ibata et al. 1994). While Sgr’s main body shows very different velocities of  $\sim 140 \text{ km s}^{-1}$  (Ibata et al. 1994), the simulations of Fellhauer et al. (2006) predict parts of the old trailing arm to pass near the region and distance where our star 37860 is located, at the large negative radial velocity we indeed observed. The best match in



**Fig. 11.** Comparison of proper motions from two different catalogues. The direction of the motion is indicated by lines protruding at the positions of each object with lengths proportional to the absolute values of the proper motion.

this parameter space is with the component of the Sgr stream that was stripped from the dwarf galaxy in the simulations more than 7.4 Gyr ago.

Stars as metal poor as 37860 ( $[\text{Fe}/\text{H}] = -2.07$ ) are known to exist in various components associated with the Sgr system, including field RR Lyrae (Vivas et al. 2005) and globular clusters stripped from the disrupted dwarf (e.g., Mottini & Wallerstein 2008; Law & Majewski 2010), each down to  $-2.3$  dex. If 37860 was indeed a member of the metal-poor Sgr population, its regular abundance pattern points towards a chemical evolution of those parts that were stripped early on in the accretion process that was typical for similarly old, metal-poor environments (e.g., Roederer et al. 2014; Koch & Rich 2014), contrasting the complex evolution of Sgr’s compact and intact main body (McWilliam et al. 2013), at higher  $[\text{Fe}/\text{H}]$ .

### 6.3. Kinematics

In order to further investigate the nature of our sample stars, we extracted their proper motions from two sources: the Southern Proper Motion Catalog 4 (SPM4; Girard et al. 2011) and The Fourth US Naval Observatory CCD Astrograph Catalog (UCAC4; Zacharias et al. 2013). As Fig. 11 implies, the proper motions from both surveys are significantly different for more than half of our sample, which hampers a reliable assessment of the stars’ dynamical history and in the following, we only briefly comment on a few points (see also the discussion in Casey & Schlafman 2015 and their Table 2).

Using the stellar kinematics, we integrated their orbits 12 Gyr backwards in the Galactic potential of Dehnen & Binney (1998), which contains contributions from the halo and disk. Here, the bulge is assumed to follow a spherical density distribution. We note that only in two cases, realistic (“bound”) orbits could be obtained in the sense that the orbital period was below a Hubble time. All others are on radial passages and periods or apocentres cannot be further quantified. Taken at face value, this would imply that the majority of our stars would be on high-velocity, radial orbits that would make them pass through the halo and bulge regions as mere interlopers (e.g., Kunder et al. 2015). But we emphasise again that these interpretations are

subject to the largely uncertain proper motions and need consolidation from future, improved kinematic data, e.g., from the *Gaia* astrometric mission.

## 7. Summary and conclusions

The main scope of this work had been to identify and analyse metal-poor star candidates in the Galactic bulge so as to trace the earliest enrichment phases of one of the oldest components of the MW. Our main findings from an analysis of seven stars located towards the bulge are:

- Out of the five red giants and two horizontal branch stars of the sample, five are in the very metal-poor regime, at  $-2.7 < [\text{Fe}/\text{H}] < -2.0$ . The most metal-rich star is a typical bulge member at Solar metallicity with Solar abundance ratios in all elements studied.
- We do not see any evidence for chemical enrichment by massive Population III stars: all stars have approximately Solar [Sc/Fe] ratios, in contrast to nucleosynthetic models of those massive stars, which are expected to have occurred in large numbers in the central regions of the MW.
- The metal-poor sample is chemically “normal” in the remainder of the determined elements: they show chemical abundance ratios that are typical of metal-poor halo stars, or of their respective class such as CEMP-*s* and CH-stars. If these stars are indeed members of the bulge, this indicates that the central regions of our Galaxy chemically resemble the inner halo.
- The two stars that show strong enhancements in carbon and/or *s*-process elements, provide, to our knowledge, the first detection of a CEMP and CH star towards the Galactic bulge.
- Based on its position on the sky, its distance, and radial velocity, one star is consistent with the old, trailing arm of the disrupted Sagittarius dwarf galaxy. Its low metallicity gives important insight into the early enrichment and disruption history of this stellar system.
- From our spectroscopic distances we cannot refute that three of our target stars are part of the far-side of the X-shaped bulge.
- Overall, the chemical abundances and distances of our stars suggest that an association with the inner halo is likely. Given the broad mix of stars we discovered, it is possible that we see halo stars on their orbit through the central regions of the Galaxy. Thus any detection of genuine metal-poor “bulge” stars needs to be taken with caution and accurate kinematic information is imperative to consolidate their membership.

Furthermore, our results show that, even with a careful selection procedure, no unambiguous detection of one single, homogeneous “metal-poor bulge” could be obtained. Further selections using infrared photometry are currently being explored and offer promising results (e.g., Schlafman & Casey 2014).

*Acknowledgements.* A.K. acknowledges the Deutsche Forschungsgemeinschaft for funding from Emmy-Noether grant Ko 4161/1. We thank the anonymous referee for a helpful report. This research made use of atomic data from the INSPECT database, version 1.0 ([www.inspect-stars.com](http://www.inspect-stars.com)).

## References

Allen, D. M., & Barbuy, B. 2006, *A&A*, 454, 895  
Alonso, A., Arribas, S., & Martínez-Roger, C. 1998, *A&AS*, 131, 209

Alonso, A., Arribas, S., & Martínez-Roger, C. 1999, *A&AS*, 140, 261  
Andrievsky, S. M., Spite, M., Korotin, S. A., et al. 2009, *A&A*, 494, 1083  
Andrievsky, S. M., Spite, M., Korotin, S. A., et al. 2010, *A&A*, 509, A88  
Aoki, W., Beers, T. C., Christlieb, N., et al. 2007, *ApJ*, 655, 492  
Baraffe, I., El Eid, M. F., & Prantzos, N. 1992, *A&A*, 258, 357  
Barklem, P. S., Piskunov, N., & O’Mara, B. J. 2000, *A&AS*, 142, 467  
Beers, T. C., & Christlieb, N. 2005, *ARA&A*, 43, 531  
Bergemann, M., & Cescutti, G. 2010, *A&A*, 522, A9  
Bergemann, M., Pickering, J. C., & Gehren, T. 2010, *MNRAS*, 401, 1334  
Bidelman, W. P., & Keenan, P. C. 1951, *ApJ*, 114, 473  
Blanco, V. M., & Terndrup, D. M. 1989, *AJ*, 98, 843  
Bonsack, W. K. 1959, *ApJ*, 130, 843  
Brewer, M. M., & Carney, B. W. 2006, *AJ*, 131, 431  
Bromm, V., & Larson, R. B. 2004, *ARA&A*, 42, 79  
Busso, M., Gallino, R., Lambert, D. L., Travaglio, C., & Smith, V. V. 2001, *ApJ*, 557, 802  
Caffau, E., Bonifacio, P., Sbordone, L., et al. 2013, *A&A*, 560, A71  
Carollo, D., Freeman, K., Beers, T. C., et al. 2014, *ApJ*, 788, 180  
Carretta, E., Gratton, R., Cohen, J. G., Beers, T. C., & Christlieb, N. 2002, *ApJ*, 124, 481  
Casey, A. R., & Schlafman, K. C. 2015, *ApJ*, 809, 110  
Cayrel, R. 1988, in *The Impact of Very High S/N Spectroscopy on Stellar Physics*, Proc. IAU Symp., 132, 345  
Cayrel, R., Depagne, E., Spite, M., et al. 2004, *A&A*, 416, 1117  
Cohen, J. G., Christlieb, N., McWilliam, A., et al. 2004, *ApJ*, 612, 1107  
Cristallo, S., Piersanti, L., Straniero, O., et al. 2011, *ApJS*, 197, 17  
Cutri R. M. 2003, Explanatory Supplement to the 2MASS All-Sky Data Release, <http://www.ipac.caltech.edu/2mass/releases/allsky/doc/explsup.html>  
Dehnen, W., & Binney, J. 1998, *MNRAS*, 294, 429  
Dotter, A., Chaboyer, B., Jevremović, D., et al. 2008, *ApJS*, 178, 89  
Faccioli, L., Smith, M. C., Yuan, H.-B., et al. 2014, *ApJ*, 788, 105  
Fellhauer, M., Belokurov, V., Evans, N. W., et al. 2006, *ApJ*, 651, 167  
Fulbright, J. P. 2000, *AJ*, 120, 1841  
Fulbright, J. P., McWilliam, A., & Rich, R. M. 2007, *ApJ*, 661, 1152  
García Pérez, A. E., Cunha, K., Shetrone, M., et al. 2013, *ApJ*, 767, L9  
Girard, T. M., van Alena, W. F., Zacharias, N., et al. 2011, *AJ*, 142, 15  
Gratton, R., & Sneden, C. 1991, *A&A*, 241, 501  
Hansen, C. J., Bergemann, M., Cescutti, G., et al. 2013, *A&A*, 551, A57  
Hansen, T., Hansen, C. J., Christlieb, N., et al. 2014, *ApJ*, 787, 162  
Hansen, C. J., Ludwig, H.-G., Seifert, W., et al. 2015, *Astron. Nachr.*, 336, 665  
Heger, A., & Woosley, S. E. 2010, *ApJ*, 724, 341  
Honda, S., Aoki, W., Ishimaru, Y., Wanajo, S., & Ryan, S. G. 2006, *ApJ*, 643, 1180  
Honda, S., Aoki, W., Beers, T. C., & Takada-Hidai, M. 2011, *ApJ*, 730, 77  
Howard, C. D., Rich, R. M., Reitzel, D. B., et al. 2008, *ApJ*, 688, 1060  
Howes, L. M., Asplund, M., Casey, A. R., et al. 2014, *MNRAS*, 445, 4241  
Husti, L., Gallino, R., Bisterzo, S., Straniero, O., & Cristallo, S. 2009, *PASA*, 26, 176  
Ibata, R. A., Gilmore, G., & Irwin, M. J. 1994, *Nature*, 370, 194  
Iben, I. Jr. 1965, *ApJ*, 142, 1447  
Johnson, J. A., & Bolte, M. 2001, *Nucl. Phys. A*, 688, 41  
Johnson, C. I., Rich, R. M., Kobayashi, C., & Fulbright, J. P. 2012, *ApJ*, 749, 175  
Johnson, C. I., Rich, R. M., Kobayashi, C., et al. 2013a, *ApJ*, 765, 157  
Johnson, C. I., McWilliam, A., & Rich, R. M. 2013b, *ApJ*, 775, L27  
Johnson, C. I., Rich, R. M., Kobayashi, C., Kunder, A., & Koch, A. 2014, *AJ*, 148, 67  
Karakas, A. I., Tout, C. A., & Lattanzio, J. C. 2000, *MNRAS*, 316, 689  
Keenan, P. C. 1942, *ApJ*, 96, 101  
Keller, S. C., Bessell, M. S., Frebel, A., et al. 2014, *Nature*, 506, 463  
Kelson, D. D. 2003, *PASP*, 115, 688  
Kelson, D. D., Illingworth, G. D., van Dokkum, P. G., & Franx, M. 2000, *ApJ*, 531, 159  
Koch, A., & McWilliam, A. 2014, *A&A*, 565, A23  
Koch, A., & Rich, R. M. 2014, *ApJ*, 794, 89  
Kunder, A., Koch, A., Rich, R. M., et al. 2012, *AJ*, 143, 57  
Kunder, A., Rich, R. M., Gerhard, O., et al. 2014, in *Formation and Evolution of the Galactic Bulge*, Proc. Conf. held 20–24 January, at the Sixten Center for Astrophysics, 15  
Kunder, A., Rich, R. M., Hawkins, K., et al. 2015, *ApJ*, 808, L12  
Law, D. R., & Majewski, S. R. 2010, *ApJ*, 718, 1128  
Lawler, J. E., Wood, M. P., Den Hartog, E. A., Feigenson, T., Sneden, C., & Cowan, J. J. 2014, *ApJS*, 215, 20  
Li, Z.-Y., & Shen, J. 2012, *ApJ*, 757, L7  
Lind, K., Asplund, M., & Barklem, P. S. 2009, *A&A*, 503, 541  
Lind, K., Asplund, M., Barklem, P. S., & Belyaev, A. K. 2011, *A&A*, 528, A103

- Lucatello, S., Tsangarides, S., Beers, T. C., et al. 2005, *ApJ*, 625, 825
- Marconi, M., Coppola, G., Bono, G., et al. 2015, *ApJ*, 808, 50
- Mashonkina, L., & Christlieb, N. 2014, *A&A*, 565, A123
- McClure, R. D., & Woodsworth, A. W. 1990, *ApJ*, 352, 709
- McWilliam, A., & Rich, R. M. 1994, *ApJS*, 91, 749
- McWilliam, A., & Zoccali, M. 2010, *ApJ*, 724, 1491
- McWilliam, A., Preston, G. W., Sneden, C., & Searle, L. 1995, *AJ*, 109, 2757
- McWilliam, A., Rich, R. M., & Smecker-Hane, T. A. 2003, *ApJ*, 592, L21
- McWilliam, A., Wallerstein, G., & Mottini, M. 2013, *ApJ*, 778, 149
- Morrison, H. L., Mateo, M., Olszewski, E. W., et al. 2000, *AJ*, 119, 2254
- Mottini, M., & Wallerstein, G. 2008, *AJ*, 136, 731
- Ness, M., Freeman, K., Athanassoula, E., et al. 2013a, *MNRAS*, 430, 836
- Ness, M., Freeman, K., Athanassoula, E., et al. 2013b, *MNRAS*, 432, 2092
- Nidever, D. L., Zasowski, G., Majewski, S. R., et al. 2012, *ApJ*, 755, L25
- Nissen, P. E., Chen, Y. Q., Schuster, W. J., & Zhao, G. 2000, *A&A*, 353, 722
- Nomoto, K., Tominaga, N., Umeda, H., Kobayashi, C., & Maeda, K. 2006, *Nucl. Phys. A*, 777, 424
- Norris, J. E., Yong, D., Bessell, M. S., et al. 2013, *ApJ*, 762, 28
- Pereira, C. B., Jilinski, E., Drake, N. A., et al. 2012, *A&A*, 543, A58
- Preston, G. W., & Sneden, C. 2001, *AJ*, 122, 1545
- Prochaska, J. X., & McWilliam, A. 2000, *ApJ*, 537, L57
- Reddy, B. E., Lambert, D. L., & Allende Prieto, C. 2006, *MNRAS*, 367, 1329
- Reid, M. J., Menten, K. M., Brunthaler, A., et al. 2014, *ApJ*, 783, 130
- Roederer, I. U., Preston, G. W., Thompson, I. B., et al. 2014, *AJ*, 147, 136
- Sadakane, K., Arimoto, N., Ikuta, C., et al. 2004, *PASJ*, 56, 1041
- Schlaufman, K. C., & Casey, A. R. 2014, *ApJ*, 797, 13
- Schörck, T., Christlieb, N., Cohen, J. G., et al. 2009, *A&A*, 507, 817
- Sesar, B., Jurić, M., & Ivezić, Ž. 2011, *ApJ*, 731, 4
- Shetrone, M. D., Côté, P., & Sargent, W. L. W. 2001, *ApJ*, 548, 592
- Simmerer, J., Sneden, C., Cowan, J. J., et al. 2004, *ApJ*, 617, 1091
- Skrutskie, M. F., Cutri, R. M., Stiening, R., et al. 2006, *AJ*, 131, 1163
- Sneden, C., Cowan, J. J., & Gallino, R. 2008, *ARA&A*, 46, 241
- Spite, M., Caffau, E., Bonifacio, P., et al. 2013, *A&A*, 552, A107
- Tumlinson, J. 2010, *ApJ*, 708, 1398
- Umeda, H., & Nomoto, K. 2002, *ApJ*, 565, 385
- Unsöld, A. 1955, *Physik der Sternatmosphären* (Berlin: Springer)
- Vivas, A. K., Zinn, R., & Gallart, C. 2005, *AJ*, 129, 189
- Wegg, C., Gerhard, O., & Portail, M. 2015, *MNRAS*, 450, 4050
- Winkler, H. 1997, *MNRAS*, 287, 481
- Wood, M. P., Den Hartog, E. A., Sneden, C., & Cowan, J. J. 2014, *ApJS*, 214, 18
- Woolf, V. M., Tomkin, J., & Lambert, D. L. 1995, *ApJ*, 453, 606
- Yanny, B., Newberg, H. J., Kent, S., et al. 2000, *ApJ*, 540, 825
- Zacharias, N., Finch, C. T., Girard, T. M., et al. 2013, *AJ*, 145, 44
- Zhao, G., & Magain, P. 1990, *A&A*, 238, 242