

LETTER TO THE EDITOR

## A supernova distance to the anchor galaxy NGC 4258<sup>★</sup>

J. Polshaw<sup>1</sup>, R. Kotak<sup>1</sup>, K. C. Chambers<sup>2</sup>, S. J. Smartt<sup>1</sup>, S. Taubenberger<sup>3,4</sup>, M. Kromer<sup>5</sup>, E. E. E. Gall<sup>1</sup>,  
W. Hillebrandt<sup>4</sup>, M. Huber<sup>2</sup>, K. W. Smith<sup>1</sup>, and R. J. Wainscoat<sup>2</sup>

<sup>1</sup> Astrophysics Research Centre, School of Mathematics and Physics, Queen's University Belfast, Belfast BT7 1NN, UK  
e-mail: jpo1.shaw01@qub.ac.uk

<sup>2</sup> Institute for Astronomy, University of Hawaii, 2680 Woodlawn Drive, Honolulu, HI 96822, USA

<sup>3</sup> European Southern Observatory, Karl-Schwarzschild-Str. 2, 85748 Garching bei München, Germany

<sup>4</sup> Max-Planck-Institut für Astrophysik, Karl-Schwarzschild-Str. 1, 85748 Garching bei München, Germany

<sup>5</sup> The Oskar Klein Centre & Department of Astronomy, Stockholm University, AlbaNova, 106 91 Stockholm, Sweden

Received 6 July 2015 / Accepted 3 August 2015

### ABSTRACT

The fortuitous occurrence of a type II-Plateau (IIP) supernova, SN 2014bc, in a galaxy for which distance estimates from a number of primary distance indicators are available provides a means with which to cross-calibrate the standardised candle method (SCM) for type IIP SNe. By applying calibrations from the literature we find distance estimates in line with the most precise measurement to NGC 4258 based on the Keplerian motion of masers ( $7.6 \pm 0.23$  Mpc), albeit with significant scatter. We provide an alternative local SCM calibration by only considering type IIP SNe that have occurred in galaxies for which a Cepheid distance estimate is available. We find a considerable reduction in scatter ( $\sigma_I = 0.16$  mag), but note that the current sample size is limited. Applying this calibration, we estimate a distance to NGC 4258 of  $7.08 \pm 0.86$  Mpc.

**Key words.** supernovae: general – supernovae: individual: SN 2014bc – distance scale – galaxies: individual: NGC 4258

### 1. Introduction

Although the use of thermonuclear (type Ia) supernovae (SNe) as standardisable candles is now firmly embedded within the fabric of mainstream cosmology, consideration of other types of SNe as either relative or absolute distance indicators is still in its infancy. The reasons for this are manifold, ranging from overall faintness at epochs of interest (e.g. type IIP SNe; Hamuy & Pinto 2002; Nugent et al. 2006), to a current lack of comparable precision when compared to SNe Ia (e.g. GRB-SNe; Cano & Jakobsson 2014; Li et al. 2014) or superluminous SNe (Inserra & Smartt 2014). Of the non-type Ia SNe, arguably the most promising avenue is afforded by the type IIP SNe, as their relative faintness is amply compensated by their higher frequency per unit volume, while the tight correlation between ejecta velocity and plateau brightness (“standardised candle method”, hereafter SCM; Hamuy & Pinto 2002) rests on physically-motivated, and well-understood grounds.

The local distance scale hinges primarily on the calibration of the Cepheid period-luminosity ( $P - L$ ) relation to the Large Magellanic Cloud (LMC) distance. Although no effort has been spared in attempting to quantify the systematic effects that affect the  $P - L$  relation, (e.g. Freedman et al. 2001; Fausnaugh et al. 2015), the suitability of LMC as the first rung on the cosmological distance ladder has itself been called into question (e.g. Macri et al. 2006; Riess et al. 2011). NGC 4258 is a natural choice for anchoring the Cepheid distance scale as a geometric maser distance with an uncertainty of only 3% has been measured ( $7.6 \pm 0.23$  Mpc; Humphreys et al. 2013).

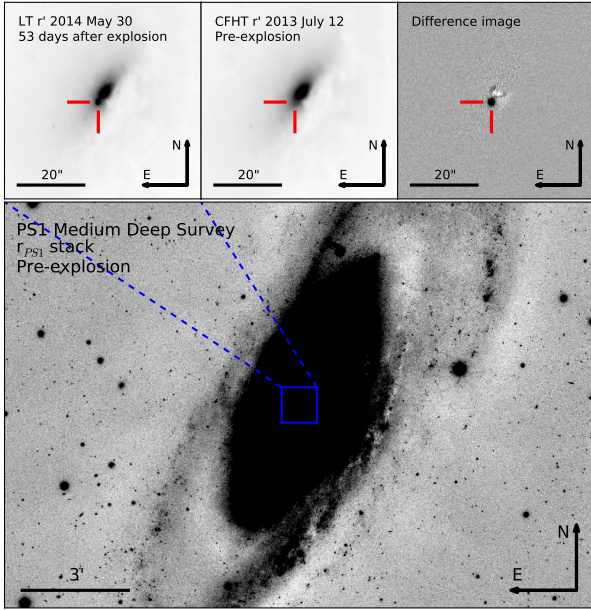
In this Letter, we use SN 2014bc to obtain the distance to NGC 4258, the only galaxy for which both maser and Cepheid distance measurements are available.

### 2. Observations

SN 2014bc in NGC 4258 was discovered by the Panoramic Survey Telescope and Rapid Response System 1 (PS1; Kaiser et al. 2010) on 2014 May 19.25 (Smartt et al. 2014). However, upon further inspection, the first PS1 detection was in fact on 2014 Apr. 11.40, when NGC 4258 was serendipitously observed during the PS1 NEO survey. The Lick Observatory Supernova Search (LOSS) subsequently reported an earlier detection on 2014 Apr. 9.35 (Zheng & Filippenko 2014), although they do not give a precise magnitude due to the proximity of the SN to the bright nucleus of NGC 4258 (see Fig. 1). Nevertheless, LOSS did report a non-detection on 2014 Apr. 6.35 at  $R > +18.0$  mag., allowing us to constrain the explosion epoch to 2014 Apr.  $7.9 \pm 1.5$  (MJD =  $56754.9 \pm 1.5$ ), which we will hereafter refer to as day 0. An optical spectrum obtained 2 d after discovery (+43.9 d) revealed the object to be a type-II SN (Ochner et al. 2014).

We obtained followup optical imaging of the SN using a combination of the 2 m Liverpool Telescope (LT) in the  $g'r'i'z'$  filters, and PS1 in the  $g_{PS1} r_{PS1} i_{PS1} z_{PS1} y_{PS1}$  filters. The images were reduced in a standard fashion by the LT and PS1 Image Processing Pipelines (IPP; Magnier et al. 2013), respectively. The  $griz$  zeropoints and colour terms were measured using a sequence of stars in the SDSS DR9 catalogue, while the PS1 zeropoints were computed by the IPP and taken from the images (Schlafly et al. 2012; Magnier et al. 2013). As SN 2014bc is located just  $3''.67$  from the bright nucleus of NGC 4258 (Fig. 1), direct measurements of the SN brightness were rendered difficult. We therefore subtracted archival pre-explosion images from each followup optical image using

<sup>★</sup> Appendix A is available in electronic form at <http://www.aanda.org>



**Fig. 1.** *Top:*  $r'$ -band image of SN 2014bc (*left*), pre-explosion image (*middle*), and the difference between the two (*right*). SN 2014bc is located at  $\alpha_{J2000} = 12:18:57.71$ ,  $\delta_{J2000} = +47:18:11.3$ , projected  $3'.67$  ( $\approx 135$  pc, at 7.6 Mpc) from the nucleus of NGC 4258. The position of the SN is marked by red dashes. *Bottom:* Stacked  $r_{PS1}$  image of the field pre-explosion. All images included in the stack were taken prior to 2014 Apr. 08. The  $1' \times 1'$  blue box delineates the region shown in the upper panels.

HOTPANTS<sup>1</sup>. For the LT  $g$ ,  $r$ , and  $i$  data we used images taken by the Canada France Hawaii Telescope (CFHT) taken on 2005 Apr. 06, 2013 Jul. 12 and 2009 Feb. 26 respectively. For the LT  $z$ -band we used the SDSS image of the field (taken on 2002 Dec. 13); for the PS1 data we used the Medium-Deep Survey stacks (Tonry et al. 2012a). An example of template subtraction is shown in the upper panels of Fig. 1. The magnitude of the SN in the difference image was measured via PSF-fitting using the SNOOPY<sup>2</sup> package within IRAF. The photometry of SN 2014bc is given in Table A.1, and the light curves are shown in the top panel of Fig. 2.

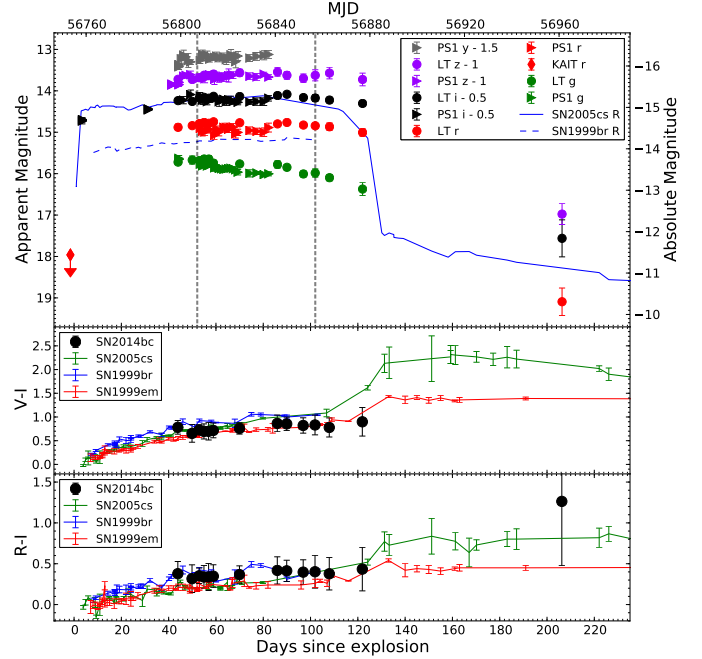
We obtained an optical spectrum of the SN at +52 d with the Gran Telescopio Canarias + OSIRIS. The R300B grism was used with a slit width of  $1''.0$ , and a total exposure time of 525 s over four separate exposures, which led to a wavelength range of 4400–10 000 Å at a resolution of 17.4 Å as measured from the FWHM of the [O I]  $\lambda 5577$  Å sky line (average of all exposures). The spectrum was reduced using standard techniques, with relative flux calibration performed using the spectrophotometric standard star GD 153, and an absolute scaling achieved from coeval photometry. This spectrum is presented in Fig. 3. We also obtained a spectrum on day 102 with the R1000B grism and a  $0''.8$  slit that yielded a resolution of 9.4 Å. Both spectra were taken with identical slit position-angles, and aligned so as to minimize contamination from the bright nucleus of NGC 4258.

### 2.1. Reddening estimate and absolute magnitudes

The Galactic reddening in the line of sight to SN 2014bc is  $E(B - V) = 0.0141$  mag (Schlafly & Finkbeiner 2011). In

<sup>1</sup> <http://www.astro.washington.edu/users/becker/hotpants.html>

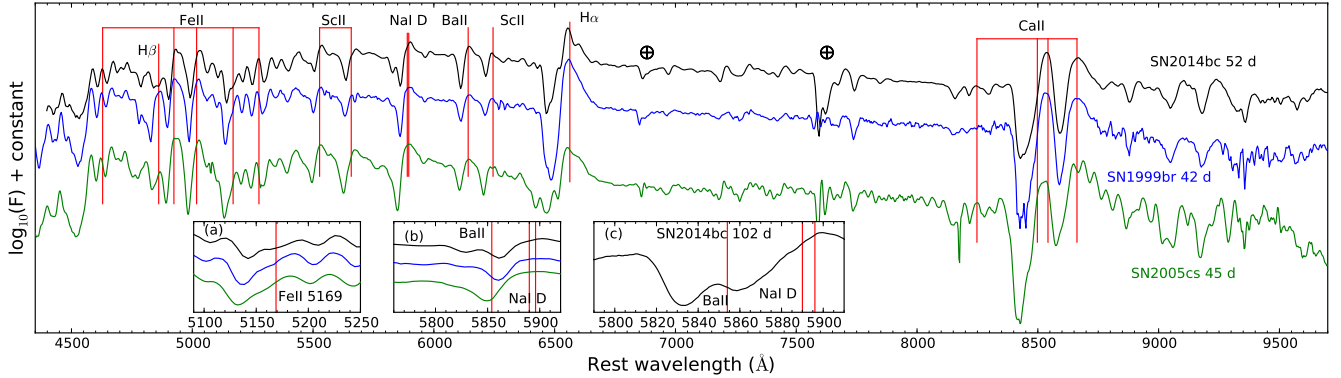
<sup>2</sup> <http://sngroup.oapd.inaf.it/snoopy>



**Fig. 2.** *Top:* light curves of SN 2014bc, corrected for Galactic reddening. The absolute magnitude scale was determined using  $\mu = 29.4$  mag. The R-band light curves of the type IIP SNe 1999br and 2005cs are shown according to the absolute magnitude scale. Downward pointing arrows indicate limiting magnitudes. The vertical dashed lines indicate the spectroscopic epochs of SN 2014bc. Small differences between the SDSS and PS1 photometric systems are evident (Tonry et al. 2012b). *Middle and bottom:* colours of SNe 2014bc compared to SNe 1999br, 2005cs, and 1999em.

order to estimate the host galaxy reddening, we consider the colour evolution, spectral shape, and search for narrow Na I D absorption. For type IIP SNe, it is reasonable to assume that the photospheric temperature should not drop below the hydrogen recombination temperature during the plateau phase. Although the actual composition will play a role, to zeroth order all type IIP SNe should evolve through the same colour at the end of the plateau (Eastman et al. 1996; Hamuy 2003a). In the middle and lower panels of Fig. 2, we compare the colour evolution of SN 2014bc to other II-P SNe. We find that the SN 2014bc colours – only corrected for Galactic reddening – closely track those of SNe 1999br, 1999em, and 2005cs, which were inferred to have a total  $E(B - V)$  of 0.024, 0.1, and 0.05 mag., respectively (Pastorello et al. 2004, 2009; Elmhamdi et al. 2003). Our photometric coverage of SN 2014bc does not extend to the transition off the plateau phase given that it was reaching conjunction with the sun at that epoch. Nevertheless, if we assume that our set of points at 122 d are at, or close to the end of the plateau, then the colours are entirely consistent with other, virtually unreddened type II-P SNe, which have observations that do continue beyond the end of the recombination phase.

Another commonly-used technique to estimate the host galaxy reddening in SNe is to measure the equivalent widths of the narrow interstellar absorption lines due to Na I D (e.g. Turatto et al. 2003). We do not detect narrow Na I lines in any of our spectra at the redshift of NGC 4258 (see insets in Fig. 3), including our highest resolution spectrum (9.4 Å). This implies little to no reddening due to the interstellar medium of the host galaxy. Ochner et al. (2014) report narrow Na I lines in their admittedly low signal-to-noise and heavily contaminated classification spectrum taken only 8 d prior to our first spectrum.



**Fig. 3.** Optical spectra of SNe 2014bc, 1999br, and 2005cs, all at approximately 50 d after explosion. The spectra have been corrected for reddening and redshift. The  $\oplus$  symbol indicates significant telluric absorption. Insets **a**) and **b**) show zoom-ins of the Fe II  $\lambda$ 5169 and Na I D regions respectively. Inset **c**) shows a zoom-in of the higher resolution 102 d spectrum of SN 2014bc. The rest wavelengths of Fe II  $\lambda$ 5169, Ba II  $\lambda$ 5854 and the Na I  $\lambda$ 5890, 5896 doublet are marked by vertical red lines in the *inset panels*.

Upon inspection of this publicly available spectrum via the Asiago Transient Classification Programme, we speculate that this might be attributable to differences in the slit positioning, seeing, and spatial resolution.

Examining all the evidence in hand, we note that the colour evolution of SN 2014bc during the plateau is completely consistent with other type IIP SNe, while the absolute magnitudes are intermediate between those of SNe 1999br and 2005cs, assuming negligible host reddening (Fig. 2). Furthermore, the spectral energy distribution of our 52 d spectrum matches these two comparison SNe, without requiring any additional reddening correction (Fig. 3). These similarities, taken together with the absence of narrow Na I D absorption lines point towards little host reddening in SN 2014bc, and in what follows, we treat it as negligible, and correct only for Galactic reddening. At first glance, this may be in stark contradiction to expectations, given the location of the SN. However, in the case of SN 2014bc, it is likely that its small galactocentric distance is merely a projection in front of the nucleus, rather than an indication that it is embedded in the galaxy core; other examples include SNe 2010cu and 2011hi, both of which occurred at projected distances of  $\lesssim 400$  pc from the centre of the dusty, luminous infrared galaxy IC 883 (100 Mpc), but had low inferred host galaxy extinctions (Kankare et al. 2012). Thus, using the maser distance modulus to NGC 4258, we find the absolute average plateau brightness to be  $M_r = -14.48$  mag and  $M_i = -14.65$  mag.

### 3. SCM applied to SN 2014bc

A tight, positive correlation between the (quasi-) bolometric luminosity and expansion velocity during the plateau phase of type IIP SNe allows them to be used as standardised candles (Hamuy & Pinto 2002). The mid-point of the plateau ( $\sim 50$  d) is traditionally used as a convenient reference point.

In order to apply this method to SN 2014bc, we first converted the *gri* magnitudes of SN 2014bc to *VRI* using the transformations of Jester et al. (2005), and fit low order polynomials to the resulting light curves to estimate the magnitudes at 50 d. The resulting magnitudes are  $m_V = +15.32 \pm 0.10$  mag and  $m_I = +14.60 \pm 0.12$  mag (uncorrected for reddening). As a check, we computed synthetic  $m_V$  and  $m_I$  magnitudes from the 52 d spectrum using the SMS code (Synthetic Magnitudes from Spectra) within the S3 package (Inserra et al., in prep.), which we found to be consistent within the uncertainties of the above transformations. The expansion velocities of type II SNe are generally measured using weak lines as these are better tracers of

the photospheric velocity, with the Fe II  $\lambda$ 5169 line typically being used. However, in SN 2014bc, this line does not form a clean P-Cygni profile, and appears to suffer from blending (see inset in Fig. 3). We therefore used the weighted mean of the Fe II  $\lambda$ 4629,  $\lambda$ 4924,  $\lambda$ 5018, and  $\lambda$ 5276 lines instead. We normalised the spectrum by fitting a low order polynomial to the pseudo-continuum and subtracting it from the spectrum. The velocity of each line was then estimated by measuring the position of the minimum of the absorption component with respect to the rest wavelength, by fitting Gaussian profiles. The procedure was repeated several times across slightly different wavelength ranges. Each line was then weighted by the standard deviation, yielding a velocity of  $v_{\text{FeII}} = 1460 \pm 100$  km s $^{-1}$ .

Next, we applied a series of SCM calibrations derived from different samples of type IIP SNe. Each calibration is based on relations between the expansion velocity at 50 d post-explosion, the coeval *I*-band magnitude ( $m_I$ ), and a reddening term. The resulting distances for SN 2014bc from the calibrations are given in Table 1. The differences between the SCM and maser distance moduli are provided, along with the median distance of the sample of SNe used in each calibration. These  $\Delta\mu$  values are related to the corrections to the zero points required to bring the calibrations into agreement with the maser distance. Although there is a spread in the values, all calibrations are reassuringly consistent with that inferred from at least one of the primary distance indicators. In particular, only the Nugent et al. (2006) calibration which excludes high-redshift SNe, marked “2b” in Table 1, is not consistent with the maser distance.

In order to further investigate the scatter among the various calibrations, we applied the SCM to all type IIP SNe that occurred in galaxies for which Cepheid distances have been measured, and for which a spectrum taken approximately at the mid-plateau point was available (Table A.2). The differences between the SCM and Cepheid distance moduli are listed in Table A.3. We find that the Hamuy (2003b) and Nugent et al. (2006) calibrations provide distance estimates that are closest to the Cepheid distances; however, most of the differences across all calibrations are within the typical uncertainty of  $\sim 0.3$  mag. All SCM calibrations yield a distance estimate to SN 2004dj – the nearest SN in our sample – that is longer than the corresponding Cepheid distance to the host galaxy. We speculate that this may be related to the late discovery of SN 2004dj, coupled with the uncertainty in its explosion epoch (Zhang et al. 2006). A Hubble diagram of these objects, using the Cepheid measurements and Riess et al. (2011)  $H_0$  value to fix the distance scale



**Table 1.** Distance estimates to NGC 4258.

Method	$D$ (Mpc)	$\mu$ (mag)	$\Delta\mu$ (mag)	Median $\mu^\dagger$ (mag)
SCM <sup>1a</sup>	6.37 (1.13)	29.02 (0.38)	-0.38	32.0
SCM <sup>1b</sup>	7.07 (1.15)	29.25 (0.35)	-0.15	34.9
SCM <sup>2a</sup>	6.78 (1.01)	29.16 (0.32)	-0.24	34.2
SCM <sup>2b</sup>	5.39 (1.05)	28.66 (0.42)	-0.74	33.2
SCM <sup>3</sup>	7.48 (1.07)	29.37 (0.31)	-0.03	32.7
SCM <sup>4</sup>	8.77 (1.45)	29.71 (0.36)	0.31	34.8
Maser <sup>5</sup>	7.60 (0.23)	29.40 (0.07)	...	...
Cepheid <sup>6</sup>	7.40 (1.16)	29.35 (0.34)	...	...
SCM <sup>7</sup> (here)	7.08 (0.86)	29.25 (0.26)	0.15	29.7

**Notes.**  $H_0 = 73.8 \text{ km s}^{-1} \text{ Mpc}^{-1}$  (Riess et al. 2011). Uncertainties are given in parentheses.  $\Delta\mu$  is the difference between each SCM distance modulus estimate and the maser distance modulus.  $^\dagger$  Median distance modulus of the SNe comprising each sample. <sup>(1a)</sup> Hamuy (2003b) Eq. (3), whole sample ( $\sigma = 0.32 \text{ mag}$ ); <sup>(1b)</sup> Hamuy (2003b) Eq. (4), excluding SNe with  $z < 0.01$  which results in a lower scatter ( $\sigma = 0.29 \text{ mag}$ ); <sup>(2a)</sup> Nugent et al. (2006) Eq. (1), whole sample; <sup>(2b)</sup> Nugent et al. (2006) Eq. (1), excluding SNe with  $z > 0.05$ ; <sup>(3)</sup> Poznanski et al. (2009) Eq. (2); <sup>(4)</sup> D’Andrea et al. (2010) Eq. (2); the Poznanski et al. (2009) sample is essentially subsumed in its entirety in the computation of this calibration. <sup>(5)</sup> Humphreys et al. (2013); <sup>(6)</sup> Fiorentino et al. (2013) provide the most recent Cepheid distance estimate to NGC 4258; <sup>(7)</sup> this work: Eq. (1).

(Fig. 4), shows a remarkably small scatter ( $\sigma_I \sim 0.16 \text{ mag}$ ) after applying the following SCM correction:

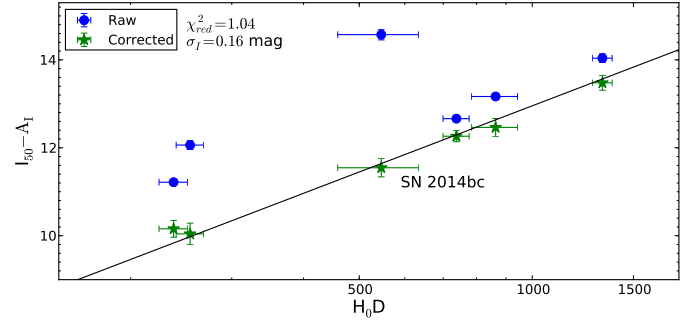
$$I_{50} - A_I + 5.665(\pm 0.487) \log_{10}(v_{50}/5000) = 5 \log_{10}(H_0 D) - 2.045(\pm 0.137). \quad (1)$$

This calibration provides a distance estimate to SN 2014bc of  $7.08 \pm 0.86 \text{ Mpc}$ , in agreement with the maser distance.

#### 4. Conclusions

Based on measurements of SN 2014bc, we find the SCM distance to the anchor galaxy NGC 4258 to be encouragingly consistent with the geometric maser distance, even though there is considerable scatter amongst the various calibrations. The current number of type IIP SNe occurring in galaxies with a previously measured Cepheid distance is surprisingly small. However, as for the SNe Ia, we expect the type IIP SN systematics to be better quantified in the coming years. Natural and immediate next steps, but ones that go beyond the scope of this work, would be to readjust the Cepheid-based distances to the galaxies listed in Table A.2 using self-consistent  $P - L$  calibrations and the revised LMC Cepheid distance modulus (Fausnaugh et al. 2015). Our expectation would be one of a knock-on further reduction in scatter for the various SCM calibrations when anchored to a sample akin to the one we present in Table A.3 and Fig. 4.

**Acknowledgements.** We thank B. Leibundgut for useful comments on an earlier draft. R.K. acknowledges support from STFC via ST/L000709/1. S.J.S. acknowledges funding from the ERC via Grant agreement No. [291222]. Support by the Deutsche Forschungsgemeinschaft via the Transregional Collaborative Research Center TRR 33 “The Dark Universe” is acknowledged. Based in part on observations carried out with the Gran Telescopio Canarias (GTC2007-12ESO), and the Liverpool Telescope installed in the Spanish Observatorio del Roque de los Muchachos of the Instituto de Astrofísica de Canarias, on the island of



**Fig. 4.** Hubble diagram of SNe listed in Table A.2, using the Cepheid distances and  $H_0 = 73.8 \text{ km s}^{-1} \text{ Mpc}^{-1}$ . The blue circles are corrected for reddening only, while the green stars are corrected for expansion velocities via least-squares fitting.

La Palma. The LT is operated by Liverpool John Moores University with financial support from STFC. Based in part on observations made with ESO Telescopes at the La Silla Paranal Observatory under programme ID 081.D-0128. PS1 is supported by NASA Grants NNX12AR65G and NNX14AM74G from NEO Observation Program. This paper includes observations obtained with MegaPrime/MegaCam, a joint project of CFHT and CEA/DAPNIA, at the Canada-France-Hawaii Telescope (CFHT), which is operated by the National Research Council (NRC) of Canada, the Institut National des Science de l’Univers of the Centre National de la Recherche Scientifique (CNRS) of France, and the University of Hawaii.

#### References

- Cano, Z., & Jakobsson, P. 2014, ApJ, submitted [arXiv:1409.3570]  
Dall’Ora, M., Botticella, M. T., Pumo, M. L., et al. 2014, ApJ, 787, 139  
D’Andrea, C. B., Sako, M., Dilday, B., et al. 2010, ApJ, 708, 661  
Eastman, R., Schmidt, B. P., & Kirshner, R. 1996, ApJ, 466, 911  
Elmhamdi, A., Danziger, I. J., Chugai, N., et al. 2003, MNRAS, 338, 939  
Fausnaugh, M., Kochanek, C. S., Gerke, J. R., et al. 2015, MNRAS, 450, 3597  
Fiorentino, G., Musella, I., & Marconi, M. 2013, MNRAS, 434, 2866  
Freedman, W. L., Madore, B. F., Gibson, B. K., et al. 2001, ApJ, 553, 47  
Hamuy, M. 2003a, ApJ, 582, 905  
Hamuy, M. 2003b, Proc. IAU Colloq., 192 [arXiv:astro-ph/0309122]  
Hamuy, M., & Pinto, P. A. 2002, ApJ, 566, L63  
Humphreys, E. M. L., Reid, M. J., Moran, J. M., et al. 2013, ApJ, 775, 13  
Inserra, C., & Smartt, S. 2014, ApJ, 796, 87  
Jester, S., Schneider, D. P., Richards, G. T., et al. 2005, AJ, 130, 873  
Kaiser, N., Burgett, W., Chambers, K., et al. 2010, SPIE, 7733  
Kankare, E., Mattila, S., Ryder, S., et al. 2012, ApJ, 744, L19  
Leonard, D. C., Kanbur, S. M., Ngeow, C. C., et al. 2003, ApJ, 594, 247  
Li, X., Hjorth, J., & Wojtak, R. 2014, ApJ, 796, L4  
Macri, L., Stanek, K. Z., Bersier, D., et al. 2006, ApJ, 652, 1133  
Magnier, E. A., Schlafly, E., Finkbeiner, D., et al. 2013, ApJ, 765, 20  
Meikle, W. P. S., Kotak, R., Farrah, D., et al. 2011, ApJ, 732, 109  
Nugent, P., Sullivan, M., Ellis, R., et al. 2006, ApJ, 645, 841  
Ochner, P., Tomasella, L., Benetti, S., et al. 2014, ATel, 6160  
Pastorello, A., Zampieri, L., Turatto, M., et al. 2004, MNRAS, 347, 74  
Pastorello, A., Valenti, S., Zampieri, L., et al. 2009, MNRAS, 394, 2266  
Pietrzyński, G., Gieren, W., Hamuy, M., et al. 2010, AJ, 140, 1475  
Pignata, G. 2013, in Massive Stars: From alpha to Omega, 176  
Poznanski, D., Butler, N., Filippenko, A. V., et al. 2009, ApJ, 694, 1067  
Riess, A. G., Macri, L., Casertano, S., et al. 2011, ApJ, 730, 119  
Schlafly, E. F., & Finkbeiner, D. P. 2011, ApJ, 737, 103  
Schlafly, E. F., Finkbeiner, D. P., Jurić, M., et al. 2012, ApJ, 756, 158  
Smartt, S. J., Maund, J. R., Gilmore, G. F., et al. 2003, MNRAS, 343, 735  
Smartt, S. J., Smith, K. W., Wright, D., et al. 2014, ATel, 6156  
Tonry, J. L., Stubbs, C. W., Kilic, M., et al. 2012a, ApJ, 745, 42  
Tonry, J. L., Stubbs, C. W., Lykke, K. R., et al. 2012b, ApJ, 750, 99  
Turatto, M., Benetti, S., & Cappellaro, E. 2003, in From Twilight to Highlight: The Physics of SNe (Springer-Verlag), 200  
Van Dyk, S. D., Li, W., & Filippenko, A. V. 2003, PASP, 115, 448  
Vinkó, J., Takáts, K., Sárneczky, K., et al. 2006, MNRAS, 369, 1780  
Yaron, O., & Gal-Yam, A. 2012, PASP, 124, 668  
Zhang, T., Wang, X., Li, W., et al. 2006, AJ, 131, 2245  
Zheng, W., & Filippenko, A. V. 2014, ATel, 6159

## Appendix A: Tables

Table A.1. Photometry of SN 2014bc.

Date yyyy mm dd	MJD	Epoch (days)	$g/g_{PS1}$	$r/r_{PS1}$	$i/i_{PS1}$	$z/z_{PS1}$	$y_{PS1}$	Telescope
2014 04 11	56 758.40	3.50	...	...	15.34 (0.07)	...	...	PS1
2014 04 11	56 758.41	3.51	...	...	15.30 (0.05)	...	...	PS1
2014 04 11	56 758.43	3.53	...	...	15.30 (0.03)	...	...	PS1
2014 04 11	56 758.44	3.54	...	...	15.31 (0.02)	...	...	PS1
2014 05 09	56 786.26	31.36	...	...	15.07 (0.01)	...	...	PS1
2014 05 09	56 786.27	31.37	...	...	15.04 (0.02)	...	...	PS1
2014 05 09	56 786.30	31.40	...	...	15.05 (0.03)	...	...	PS1
2014 05 19	56 796.25	41.35	...	...	...	14.94 (0.03)	...	PS1
2014 05 19	56 796.25	41.35	...	...	...	14.93 (0.02)	...	PS1
2014 05 19	56 796.25	41.35	...	...	...	14.94 (0.03)	...	PS1
2014 05 19	56 796.26	41.36	...	...	...	14.92 (0.03)	...	PS1
2014 05 21	56 798.88	43.98	15.91 (0.04)	15.02 (0.08)	14.84 (0.06)	14.80 (0.05)	...	LT
2014 05 22	56 799.24	44.34	...	...	...	...	14.99 (0.06)	PS1
2014 05 22	56 799.24	44.34	...	...	...	...	14.95 (0.03)	PS1
2014 05 22	56 799.24	44.34	...	...	...	...	14.98 (0.07)	PS1
2014 05 22	56 799.24	44.34	...	...	...	...	14.93 (0.01)	PS1
2014 05 22	56 799.26	44.36	...	...	...	14.93 (0.03)	...	PS1
2014 05 22	56 799.26	44.36	...	...	...	14.93 (0.05)	...	PS1
2014 05 22	56 799.26	44.36	...	...	...	14.87 (0.06)	...	PS1
2014 05 22	56 799.26	44.36	...	...	...	14.87 (0.07)	...	PS1
2014 05 22	56 799.27	44.37	15.81 (0.07)	...	...	...	...	PS1
2014 05 22	56 799.28	44.38	15.84 (0.04)	...	...	...	...	PS1
2014 05 22	56 799.30	44.40	15.83 (0.09)	...	...	...	...	PS1
2014 05 23	56 800.24	45.34	...	...	...	...	14.79 (0.11)	PS1
2014 05 24	56 801.25	46.35	...	...	14.83 (0.09)	14.73 (0.05)	14.70 (0.12)	PS1
2014 05 25	56 802.25	47.35	...	...	...	14.71 (0.06)	14.75 (0.07)	PS1
2014 05 26	56 803.24	48.34	...	...	...	...	14.84 (0.17)	PS1
2014 05 27	56 804.26	49.36	...	...	14.69 (0.11)	14.69 (0.09)	14.87 (0.06)	PS1
2014 05 27	56 804.88	49.98	15.86 (0.10)	14.98 (0.03)	14.86 (0.06)	14.80 (0.07)	...	LT
2014 05 30	56 807.89	52.99	15.87 (0.06)	14.93 (0.03)	14.78 (0.02)	14.76 (0.09)	...	LT
2014 05 31	56 808.26	53.36	15.95 (0.03)	15.05 (0.07)	14.73 (0.09)	14.77 (0.08)	14.83 (0.08)	PS1
2014 06 01	56 809.26	54.36	15.99 (0.04)	15.11 (0.12)	14.83 (0.11)	...	14.68 (0.10)	PS1
2014 06 01	56 809.92	55.02	15.83 (0.08)	14.90 (0.06)	14.76 (0.03)	14.70 (0.05)	...	LT
2014 06 02	56 810.26	55.36	15.97 (0.04)	15.12 (0.09)	14.81 (0.05)	14.79 (0.09)	14.74 (0.10)	PS1
2014 06 03	56 811.26	56.36	16.00 (0.04)	15.05 (0.07)	14.87 (0.08)	14.72 (0.07)	14.70 (0.09)	PS1
2014 06 03	56 811.89	56.99	15.84 (0.09)	14.92 (0.07)	14.78 (0.04)	14.71 (0.05)	...	LT
2014 06 04	56 812.26	57.36	15.98 (0.03)	15.07 (0.09)	14.84 (0.05)	14.69 (0.06)	14.80 (0.07)	PS1
2014 06 05	56 813.89	58.99	15.94 (0.07)	14.88 (0.06)	14.74 (0.03)	14.67 (0.08)	...	LT
2014 06 06	56 814.26	59.36	16.04 (0.09)	15.21 (0.10)	...	14.80 (0.12)	14.75 (0.08)	PS1
2014 06 07	56 815.26	60.36	16.00 (0.04)	15.06 (0.07)	14.78 (0.06)	14.69 (0.07)	14.73 (0.10)	PS1
2014 06 08	56 816.26	61.36	16.06 (0.04)	15.13 (0.09)	14.87 (0.11)	14.76 (0.11)	14.77 (0.10)	PS1
2014 06 09	56 817.26	62.36	16.06 (0.04)	...	...	14.75 (0.11)	...	PS1
2014 06 10	56 818.26	63.36	16.08 (0.05)	15.02 (0.07)	14.81 (0.07)	14.75 (0.06)	14.74 (0.09)	PS1
2014 06 11	56 819.27	64.37	16.07 (0.04)	15.02 (0.10)	14.86 (0.10)	14.75 (0.11)	14.82 (0.12)	PS1
2014 06 12	56 820.26	65.36	16.05 (0.04)	15.07 (0.08)	14.81 (0.06)	14.71 (0.16)	14.78 (0.10)	PS1
2014 06 13	56 821.26	66.36	16.05 (0.04)	15.02 (0.07)	14.83 (0.10)	14.70 (0.08)	14.70 (0.13)	PS1
2014 06 14	56 822.27	67.37	16.06 (0.04)	15.01 (0.08)	14.86 (0.06)	14.70 (0.08)	14.75 (0.10)	PS1
2014 06 15	56 823.26	68.36	16.09 (0.07)	15.17 (0.10)	...	...	14.86 (0.15)	PS1
2014 06 16	56 824.26	69.36	16.14 (0.07)	15.14 (0.08)	14.88 (0.06)	...	14.73 (0.11)	PS1
2014 06 16	56 824.94	70.04	15.95 (0.06)	14.91 (0.03)	14.74 (0.03)	14.64 (0.08)	...	LT
2014 06 21	56 829.26	74.36	16.17 (0.09)	15.09 (0.09)	14.88 (0.06)	14.73 (0.08)	14.78 (0.08)	PS1
2014 06 24	56 832.26	77.36	16.16 (0.04)	15.11 (0.08)	14.86 (0.09)	14.74 (0.08)	14.74 (0.09)	PS1
2014 06 27	56 835.27	80.37	16.20 (0.04)	15.14 (0.10)	14.86 (0.09)	14.68 (0.05)	14.71 (0.11)	PS1
2014 06 29	56 837.27	82.37	16.18 (0.05)	15.02 (0.11)	14.78 (0.07)	14.75 (0.06)	14.69 (0.09)	PS1
2014 07 02	56 840.94	86.04	15.97 (0.09)	14.94 (0.04)	14.72 (0.07)	14.62 (0.10)	...	LT
2014 07 06	56 844.92	90.02	16.04 (0.07)	14.90 (0.04)	14.69 (0.04)	14.70 (0.10)	...	LT
2014 07 13	56 851.89	96.99	16.20 (0.08)	14.96 (0.06)	14.77 (0.05)	14.77 (0.11)	...	LT
2014 07 18	56 856.89	101.99	16.17 (0.10)	14.98 (0.06)	14.78 (0.08)	14.70 (0.13)	...	LT
2014 07 24	56 862.92	108.02	16.29 (0.08)	15.00 (0.09)	14.83 (0.07)	14.65 (0.14)	...	LT
2014 08 07	56 876.90	122.00	16.56 (0.15)	15.14 (0.09)	14.91 (0.06)	14.80 (0.15)	...	LT
2014 10 31	56 961.26	206.36	>19.9	19.23 (0.33)	18.17 (0.45)	18.05 (0.25)	...	LT

Notes. Uncertainties are in parentheses. The epoch is given with respect to the estimated explosion date: MJD = 56 754.9.

**Table A.2.** Details of recent type IIP SNe in host galaxies with Cepheid distance measurements.

<i>SN</i>	Galaxy	$v_{\text{hel}}^*$ (km s <sup>-1</sup> )	$D_{\text{Cepheid}}$ (Mpc)	$E(B - V)$ (mag)	$m_{V_{50}}$ (mag)	$m_{I_{50}}$ (mag)	$v_{50}^{**}$ (km s <sup>-1</sup> )	References
2004dj	NGC 2403	133	3.22 (0.15)	0.100	12.04 (0.03)	11.40 (0.03)	3250 (250)	1, 2, 3
2008bk	NGC 7793	230	3.44 (0.15)	0.021	12.85 (0.10)	12.10 (0.10)	2200 (200)	4, 5, 6
2014bc	NGC 4258	448	7.40 (1.16)	0.014	15.32 (0.10)	14.60 (0.12)	1460 (100)	7
2012aw	NGC 3351	778	10.00 (0.41)	0.086	13.54 (0.02)	12.82 (0.05)	4250 (200)	1, 8, 9
1999em	NGC 1637	717	11.70 (1.00)	0.100	13.98 (0.05)	13.35 (0.05)	3757 (300)	10, 11, 12
2001du	NGC 1365	1636	17.95 (0.41)	0.170	15.00 (0.10)	14.35 (0.10)	3980 (220)	1, 13, 14

**Notes.** The SNe are ordered in terms of increasing distance. <sup>(\*)</sup> Heliocentric recession velocity from NED. <sup>(\*\*)</sup> Velocities extrapolated to 50 days using Eq. (2) of Nugent et al. (2006). 1) Distance from Freedman et al. (2001); 2) magnitudes and velocity from Vinkó et al. (2006); 3) reddening from Meikle et al. (2011); 4) distance from Pietrzyński et al. (2010); 5) magnitudes from Pignata (2013); 6) velocity measured from spectrum downloaded from the ESO archive; 7) distance from Fiorentino et al. (2013); 8) magnitudes, reddening and velocity from Dall’Ora et al. (2014); 9) velocity measured from spectrum downloaded from Weizmann Interactive Supernova Data Repository (WiSeREP; Yaron & Gal-Yam 2012; <http://www.weizmann.ac.il/astrophysics/wiserep/>); 10) distance from Leonard et al. (2003); 11) magnitudes and velocity from Hamuy (2003b); 12) reddening from Elmhamdi et al. (2003); 13) velocity measured from spectrum in Smartt et al. (2003) who also estimate the reddening; 14) magnitudes from Van Dyk et al. (2003).

**Table A.3.** Shift in zero points of the 4 SCM calibrations as a result of fixing the SN distance to the respective Cepheid distance to the host galaxy.

<i>SN</i>	$\Delta\mu$ (Hamuy 2003b) <sup>†</sup> (mag)	$\Delta\mu$ (Nugent et al. 2006) (mag)	$\Delta\mu$ (Poznanski et al. 2009) (mag)	$\Delta\mu$ (D’Andrea et al. 2010) (mag)
2004dj	0.24	0.33	0.22	0.43
2008bk	0.02	0.05	-0.05	0.22
2014bc	-0.10	-0.19	0.02	0.38
2012aw	-0.14	0.07	-0.37	-0.21
1999em	-0.27	-0.17	-0.34	-0.16
2001du	-0.19	0.07	-0.18	-0.01

**Notes.** The SNe are ordered in terms of increasing distance.  $\Delta\mu$  is given in the sense (SCM–Cepheid). <sup>(†)</sup> Hamuy (2003b) Eq. (4). The shifts for SN 2014bc if using the maser distance value are given in Table 1.