

## H $\alpha$ emission-line stars in molecular clouds

### II. The M 42 region (Corrigendum)

Bertil Pettersson<sup>1</sup>, Tina Armond<sup>2</sup>, and Bo Reipurth<sup>3</sup>

<sup>1</sup> Observational Astronomy, Department of Physics and Astronomy, Uppsala University, Box 516, SE-751 20 Uppsala, Sweden  
e-mail: [Bertil.Pettersson@physics.uu.se](mailto:Bertil.Pettersson@physics.uu.se)

<sup>2</sup> Universidade Federal de Sergipe, Departamento de Física, Av. Marechal Rondon s/n, 49100-000, São Cristóvão, SE, Brazil  
e-mail: [tina@ufs.br](mailto:tina@ufs.br)

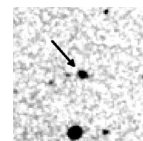
<sup>3</sup> Institute for Astronomy and NASA Astrobiology Institute, University of Hawaii at Manoa, 640 North Aohoku Place, Hilo, HI 96720, USA  
e-mail: [reipurth@ifa.hawaii.edu](mailto:reipurth@ifa.hawaii.edu)

A&A 570, A30 (2014), DOI: [10.1051/0004-6361/201423594](https://doi.org/10.1051/0004-6361/201423594)

**Key words.** stars: emission-line, Be – stars: formation – stars: pre-main sequence – errata, addenda

The finding chart for ESO-HA 1639 in Fig. 16 contains an error, the arrow points to the wrong star. A corrected version of the chart is presented here. The corresponding photometry and position have been corrected in Table 2, which is only available at the CDS.

*Acknowledgements.* We thank Brian Skiff for bringing this to our attention.



**Fig. 16.** Finding chart for ESO-HA 1639, 90'' to a side. North is up and east to the left.