

The radial metallicity gradient and the history of elemental enrichment in M 81 through emission-line probes[★]

Letizia Stanghellini¹, Laura Magrini², Viviana Casasola³, and Eva Villaver⁴

¹ National Optical Astronomy Observatory, Tucson, AZ 85719, USA
e-mail: lstanghellini@noao.edu

² INAF – Osservatorio Astrofisico di Arcetri, Largo E. Fermi 5, 50125 Firenze, Italy
e-mail: laura@arcetri.astro.it

³ INAF – Istituto di Radioastronomia & Italian ALMA Regional Center, 40129 Bologna, Italy
e-mail: casasola@ira.inaf.it

⁴ Universidad Autónoma de Madrid, Departamento de Física Teórica C-XI, 28049 Madrid, Spain
e-mail: eva.villaver@uam.es

Received 14 January 2014 / Accepted 19 March 2014

ABSTRACT

Aims. We present a new set of weak-line abundances of HII regions in M 81, which are based on Gemini Multi-Object Spectrograph (GMOS) observations. The aim is to derive plasma and abundance analysis for a sizable set of emission-line targets to study the galactic chemical contents in the framework of galactic metallicity gradients.

Methods. We used the weak-line abundance approach by deriving electron density and temperatures for several HII regions in M 81. Our gradient analysis is based on oxygen abundances.

Results. Together with a set of HII region abundances determined similarly by us with Multi-Mirror Telescope (MMT) spectra, the new data yield a radial oxygen gradient of -0.088 ± 0.013 dex kpc⁻¹, which is steeper than the metallicity gradient obtained for planetary nebulae (-0.044 ± 0.007 dex kpc⁻¹). This result could be interpreted as gradient evolution with time: Models of galactic evolution with inside-out disk formation associated to pre-enriched gas infall would produce such a difference in gradients, although stellar migration effects would also induce a difference in the metallicity gradients between the old and young populations.

Conclusions. By comparing the M 81 metallicity gradients with those of other spiral galaxies, which were all consistently derived from weak-line analysis, we can infer that a similar gradient difference is common among spirals. The metallicity gradient slopes for HII regions and PNe seem to be steeper in M 81 than in other galactic disks, which is probably because M 81 belongs to a galaxy group. We also found that M 81 has experienced an average oxygen enrichment of 0.14 ± 0.08 dex in the spatial domain defined by the observations. Our data are compatible with a break in the radial oxygen gradient slope around R_{25} as inferred by other authors both in M 81 and in other galaxies.

Key words. Galaxy: abundances – galaxies: evolution – galaxies: individual: M 81 – HII regions

1. Introduction

The metallicity of a galaxy carries the signature of its history, including various phenomena such as gas accretion during the first epochs (infall), star formation, and subsequent gas outflow/inflow. Among the various observational constraints that can shed light on the galaxy past, an important one is the radial metallicity gradient – and its evolution with time – which is sensitive to the assembly history at different radii, and thus tells a story about galaxy formation and evolution processes.

From an observational point of view, the study of the gradient evolution has been mainly investigated during the past decades by determining the metallicity of resolved populations with different ages in the Milky Way and in nearby galaxies. Measurements of metallicity of different targets in the Local Universe (for instance, young OB stars and HII regions, Cepheids, open clusters, red giant stars) have shown that disk galaxies usually exhibit negative radial metallicity gradients, with higher metallicity in their inner regions and lower

metallicity at larger galactocentric radii (e.g., Vila-Costas & Edmunds 1992; Zaritsky et al. 1994; Rupke et al. 2010). It has also been found that, in several cases, the radial gradient becomes flatter at large radii (e.g., Werk et al. 2011; Bresolin et al. 2012; CALIFA survey results described in Sanchez et al. 2014). Very recently, more attention has also been devoted to measurements of the time evolution of metallicity gradients and its consequent implications for galaxy formation and evolution.

In the Galaxy, two stellar tracers have essentially been used to investigate the time evolution of the radial gradient: open clusters and planetary nebulae (PNe). Open clusters represent a reliable approach to studying the time evolution of the metallicity gradient, since it is possible to firmly determine their age, Galactocentric distances, and abundances of a large number of elements (see, e.g., Janes 1979; Freeman & Bland-Hawthorn 2002; Friel et al. 2002; Magrini et al. 2009a; Bland-Hawthorn et al. 2010; Kobayashi & Nakasato 2011, Yong et al. 2012). From the recent high spectral resolution studies of open clusters in the inner Galaxy ($R_G < 13$ kpc), the older open clusters show a steeper abundance gradient than the younger clusters, thus implying a slight gradient flattening with time in the inner Galaxy.

[★] Full Tables 3 and 4 are only available at the CDS via anonymous ftp to cdsarc.u-strasbg.fr (130.79.128.5) or via <http://cdsarc.u-strasbg.fr/viz-bin/qcat?J/A+A/567/A88>

Planetary nebulae should in principle allow the time evolution of the gradient to be detected by comparing the present-day gradient, as outlined by HII regions, with that of PNe of different ages. In our Galaxy, however, the distances to PNe are affected by large uncertainties that restrict their use as tracers of the past evolution of metallicity gradients.

The best distance scale available to date is the one calibrated on the Magellanic Cloud PNe observed with the *Hubble* Space Telescope (HST; Stanghellini et al. 2008). This distance scale is very similar to the Cahn et al. (1992) scale, the most commonly used one to date. Stanghellini & Haywood (2010) used the Stanghellini et al. (2008) scale and oxygen abundances from weak-line analysis to determine Galactic metallicity gradients with the PNe of different progenitor ages. The sample of PNe analyzed by Stanghellini & Haywood (2010) had been parsed into age bins based on their location with respect to the Galactic plane, their peculiar radial velocity, and their nitrogen and helium contents. In fact, the mass range of PN progenitors can be constrained by comparing the observed N and He enrichment to the yields from stellar evolution. This allows marking the time of PN progenitor formation, and consequently allows the determination of chemical enrichment when comparing α -element abundances in young and old populations.

The nebular parameters listed above have typically low uncertainties, and only marginally depend on assumptions. Stanghellini & Haywood (2010) found a very mild steepening of the gradient with time, but the evolution is not significant given the distance scale uncertainties. On the other hand, Maciel & Costa (2013) have determined the radial metallicity gradients of several PN populations with the Cahn et al. (1992) distance scale and by using the PN central star properties to date the PN populations. They found radial gradients to be almost invariant with time, with differences consistent with the age-metallicity dispersion. The different results by the two PN teams could be ascribed to uncertainties associated with dating PNe based on central stars, given that stellar progenitors could have had a non-conventional evolution such as common envelope binaries, rather than to the distance scale used.

In external galaxies, where PNe can be assumed, to first order, at the same distance of the host galaxy, the comparison of PNe and HII region abundances, when investigated with similar observational and analysis techniques, has given reliable results (e.g., Magrini et al. 2007, 2010; Stanghellini et al. 2010; Stasinska et al. 2013). The large database of PNe and HII regions in M33 indicate that the galaxy underwent a global enrichment similar at all radii and that the slope of the gradient was essentially unvaried (Magrini et al. 2010). For NGC 300, Stasinska et al. (2013) find that the formal abundance gradients of PNe are shallower than for HII regions. However, their large observed abundance dispersion and the scarce statistics on which their results are based make any conclusion on a possible steepening of the gradients with time only tentative.

An alternative approach to the study of the time evolution of metallicity gradients is to derive them at different cosmic epochs and to compare with local $z = 0$ galaxies, making certain to consider galaxies with equivalent dark matter halos. Some pioneering studies have found unexpected results that suggest that some massive galaxies may show positive gradients with lower metallicity in the central regions (Cresci et al. 2010; Queyrel et al. 2012) at very high redshift ($z \sim 3$). These galaxies, however, are likely progenitors of present-day massive elliptical galaxies and should be not compared with the present disk galaxies. Other recent studies have instead been based on the analysis of high- z lensed galaxies. Jones et al. (2010) measured the metallicity

gradient of a gravitationally lensed galaxy at $z = 2$, finding it significantly steeper than in local disk galaxies. A similar result was obtained in another lensed galaxy at $z = 1.5$ (Yuan et al. 2011). Another four lensed galaxies have been studied very recently by Jones et al. (2013), who compared them with galaxies at lower redshift selected to occupy equivalent dark matter halos. They find that, on average, gradients flatten by a factor of ~ 2.6 between $z = 2.2$ and $z = 0$, in agreement with the size evolution measured for more massive galaxies by van Dokkum et al. (2010).

The emerging scenario at this time is that several Local Universe observations have shown the presence of metallicity gradients in old populations, such as PNe and open clusters. Since radial migration is only able to flatten the gradient redistributing the stars of different ages (see, e.g., Fig. 2 of Roskar et al. 2008; Minchev et al. 2013), the observations of non-null gradients in an old population imply that the effect of radial migration of stellar population is not strong enough to cancel them.

To date, we do not have any firm conclusion on the evolution of the gradients in the Local Universe since different authors have found discordant results. However, we can conclude that all results are in the framework of a limited evolution of the slope with time. From the high- z Universe observations, the new set of observations of lensed galaxies (consistent with present-day disk-galaxy progenitors) show steeper gradients than those observed presently in disk galaxies. If we compare the high- z results with Fig. 2 in Roskar et al. (2008), we can see that they are not inconsistent with what is observed with the old stellar population in Local Universe galaxies.

From a theoretical point of view, different types of classical chemical evolution models – where “classical” means that they do not consider the cosmological context, and they do not consider dynamical effects – predict different temporal behaviors of the metallicity gradients due to the different rates of the chemical enrichment in inner and outer regions of the galactic disk related to the star formation and infall processes. The models can be broadly divided into those where the metallicity gradients steepen with time (Chiappini et al. 1997) and those where they flatten with time (Mollá et al. 1997; Portinari & Chiosi 1999; Bossier & Prantzos 1999; Hou et al. 2000; Magrini et al. 2007, 2009b). However, classical models have recently been surpassed by the development of models for the formation and evolution of galaxies created in a cosmological context (see, e.g., Rahimi et al. 2011; Pilkington et al. 2012; Gibson et al. 2013) and by models that join chemical evolution with dynamical aspects (see, e.g., Minchev et al. 2013). Only recently have these new sets of models reached a spatial resolution able to investigate the shape of the metallicity gradients and its evolution with time.

The conclusions given by Gibson et al. (2013) are instructive of the current situation. With their modeled galaxies, which were realized with different assumptions (e.g., with different feedback implementations), they can obtain both gradients that only mildly steepen with time, and metallicity gradients steeper at high redshift that subsequently flatten with time. Both results have observational counterparts, so they conclude that more constraints from the local and high-redshift Universe are needed to provide more definitive conclusions on the time evolution of the gradients. Mollá (2014) arrive at similar conclusions where spectro-photometric models show moderate flattening of the radial gradients with decreased redshift; such evolutionary flattening is generally less marked in the inner parts of the galaxies.

Aiming to add more constraints to the evolution of radial metallicity gradients, we embarked on observing a significant sample of HII regions in M81, which is a nearby

(3.63 ± 0.34 Mpc, Freedman et al. 2001) spiral galaxy whose membership to a tidal group is evident from its extended tidal streams and which is clearly observed in the HI emission line (Gottesman & Welchew 1975; Yun et al. 1994). Several tools are available to understand the chemical evolution of the M 81 disk: star clusters (Ma et al. 2005; Nantais et al. 2011), young supergiant stars (Davidge 2006), X-ray sources (Sell et al. 2011), and color–magnitude diagrams fitting the HST-resolved stellar population (Kudritzki et al. 2012). Nonetheless, emission-line targets such as HII regions and PNe have advantages over their stellar counterparts since PN and HII region spectra are analyzed in similar ways, making the comparison of the two sets of probes more direct than when comparing sources of different natures. HII regions and PNe represent different star formation epochs in the galaxy evolutionary history, since HII regions probe the stellar population currently formed and PNe are the gaseous remnants of stars formed 1–10 Gyr ago. Studied together, the two populations provide the temporal dimension of galactic evolution.

The study of chemical evolution through emission-line probes in M 81 has been attempted before. Garnett & Shields (1987) have used strong-line abundances to constrain the radial metallicity gradient of the M 81 disk with oxygen abundances of HII regions, finding a negative gradient of about -0.08 dex kpc^{-1} at intermediate (4–12 kpc) galactocentric radii. The strong-line method provides estimate of elemental abundances, while the weak-line method utilizes auroral line strengths to determine electron temperatures directly, and it is much more accurate at determining ionic abundances. M 81 has a well-defined, shallow PN metallicity gradient from weak-line analysis (Stanghellini et al. 2010). Several HII regions have been studied within the same paper as well, but the characterization of the radial metallicity gradient has not been possible given the limited number of probes observed.

While direct comparison of emission line abundances from probes of different progenitors has been attempted successfully in M33 and NGC 300, to date there have been no other nearby spirals where adequate spectroscopy is available for both PNe and HII regions to determine weak-line abundances. This paper represents a continuation of these abundance studies started by us with M33 (Magrini et al. 2009b, 2010) and M 81 (Stanghellini et al. 2010). Here, we present the weak-line abundances from a new dataset of HII region spectroscopy in the inner 12 kpc of M 81. We observed two M 81 fields with the Gemini Multi-Object Spectrograph (GMOS) on Gemini North with the aim of obtaining weak-line abundances for HII regions that would define the radial metallicity gradient in the inner parts of M 81, with the main goal to study their metallicity gradient and chemical enrichment.

We present the data acquisition and analysis in Sect. 2; the radial metallicity gradients and metal enrichment of M 81 based on our data are in Sect. 3; the discussion in Sect. 4 includes a comparison of M 81 weak-line abundance gradients with those of other galaxies. The conclusions are given in Sect. 5.

2. Data acquisition and analysis

Progress in understanding galaxy formation and evolution is made by constraining evolutionary models with the best available data sets. The chemical evolution of galactic disks in particular is described well by their radial metallicity gradients: abundance of resolved targets, together with their spatial distribution, set solid constraints on the star formation history and rates of the studied galaxies. Abundance studies of nearby galaxies, where

Table 1. Observing log.

M 81 field	Date	Mode	t_{exp} [m]	IQ %	CC %	BG %
Imaging						
1	2011-12-29	Ha G0310	9	70	50	50
1	2011-12-30	HaC G0311	9	85	50	50
2	2011-12-08	Ha G0310	9	20	50	80
2	2011-12-08	HaC G0311	9	20	50	50
MOS						
1	2012-01-24	B600+G5307	100
1	2012-01-24	R400+G5305	100
2	2012-01-24	B600+G5307	100
2	2012-01-24	R400+G5305	100

the stellar populations can be resolved, offer the opportunity to constrain models of disk evolution that can then be extrapolated to higher redshifts, where the effects of variations in star formation history and stellar ages are more difficult to quantify.

Our data set consists of narrow-band and continuum images, and multi-object spectrograph (MOS) spectroscopy, of two M 81 fields. Pre-imaging was acquired with GMOS-N in queue mode, while MOS observations were acquired on January 24, 2012 in classical mode from Mauna Kea. A log of all observations is given in Table 1, where we report the field, date, set up, and for the queue observations, the observing conditions (image quality, cloud cover, and background), as defined by Gemini.

2.1. Pre-imaging

With program GN-2011B-Q-32 we studied two fields of M 81, both covering an area of 5.5 arcmin², located at the periphery (field 1: RA 09:55:16.96; Dec 69:11:19.42) and near the center (field 2: RA 09:55:04.41; Dec 69:05:50.31) of the galaxy. Images were acquired through the $H\alpha$ and corresponding continuum filter, with details in Table 1.

In Fig. 1 we have indicated the location of our fields. Therein, the squares indicate the position of the identified HII regions that we have then observed spectroscopically and whose temperature and density diagnostic lines have a sufficient signal-to-noise ratio ($S/N \sim 3$) for plasma analysis to be performed, while crosses correspond to targeted regions whose spectra were not well characterized. The regions had been identified in the subtracted images, where the continuum images were scaled, then subtracted from the $H\alpha$ images. We used the GMOS mask-making software (*gmmps*, available on Gemini webpages) to produce the two masks for spectroscopy. We endeavored to select only HII regions, avoiding targets that were likely to be planetary nebulae (the slightly fainter, compact $H\alpha$ sources). We could perform MOS spectroscopy of 27 HII regions in field 1 and 29 regions in field 2.

2.2. MOS spectroscopy

The MOS spectroscopy of both M 81 fields were acquired classically on January 24, 2012, with GMOS-N at Mauna Kea. We employed both the R400 and B600 gratings to obtain the full spectral domain between 3200 and 9000 Å needed for the science goals and used 1'' slitlets with 2×2 binning. The structure of our observing sequence is the one suggested by Gemini, which for each field consists of (1) the baseline arcs in both gratings; (2) the mask image; (3) the acquisition of the field; (4) the science observations with flats, with three MOS spectra for each

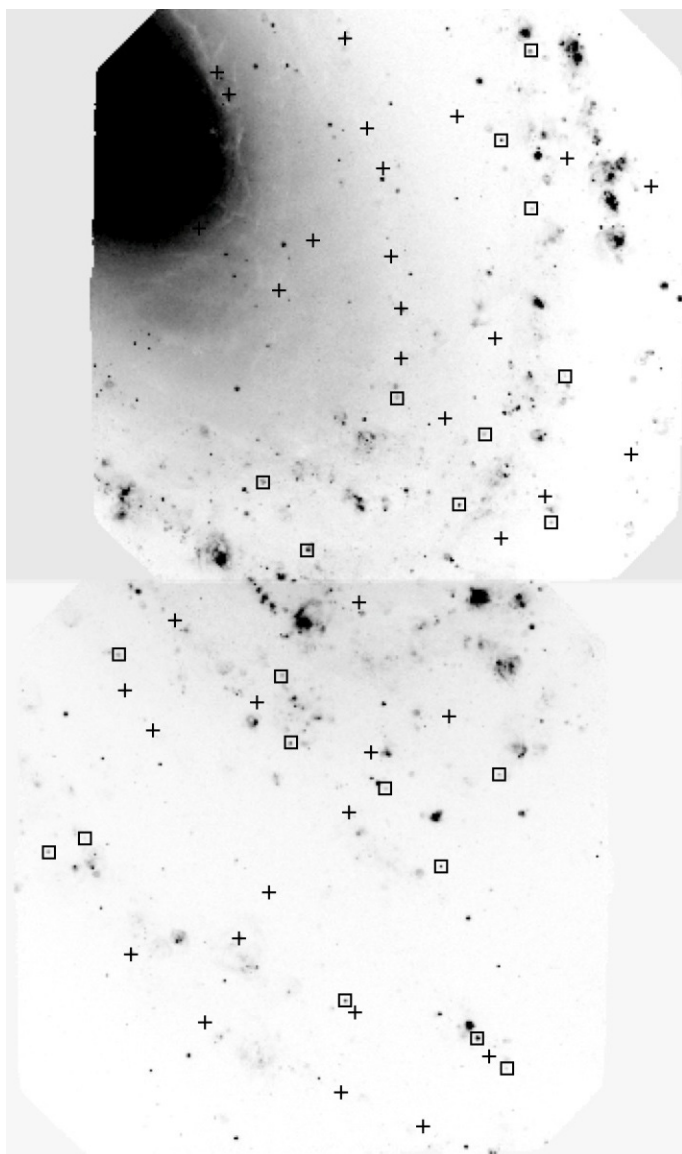


Fig. 1. Observed fields in the $H\alpha$ filters. Field 2, the one closer to the galaxy center, is in the *upper panel*, and field 1 in the *lower panel*. The observed regions are indicated, where the squares are the regions with measured spectroscopy. Orientation is north down, east left.

setting. Then we also acquired twilight flats, long-slit spectra of a standard star, and the calibration arcs and flats for the standard star.

To avoid the spectroscopic gaps (roughly 37 pixels each) between the three detectors, we observed the fields with B600 MOS and central wavelengths 5200 and 5250 Å, while only one wavelength setting, 7400 Å, was used for the R400 gratings. We also acquired R400 spectra with central wavelength 5200 Å, which we did not use in the science presented here. (The overlap with the other spectra was too limited.)

The data analysis was performed with the IRAF¹ routines for GMOS. First, we selected biases and ran *gbias* to obtain a combined bias frame. For each field, grating, and setting, we then combined and reduced the flat frames with *gsflat*, then ran

¹ IRAF is distributed by the National Optical Astronomy Observatory, which are operated by the Association of Universities for Research in Astronomy, Inc., under cooperative agreement with the National Science Foundation.

sgcut with input the combined flats, to obtain the edges of the slits.

To simplify data reduction and file keeping, we produced input and output file lists for each field, grating, and setting, so we can perform data analysis on the lists rather than individual files. The first data analysis step is to run *gsreduce*. As input we used the corresponding lists of spectroscopic images relative to each field and setting, and used the bias and combined flats produced as indicated above. Cosmic ray rejection is possible thanks to the multiple MOS images for each setting.

The arc spectra were reduced separately for each setting, also with *gsreduce*, with the same bias as obtained above. Arc reduction did not include flats since they had been observed in sequence with the science images, as usually done for GMOS observing sequences. Then for each configuration, we chose the best arc image and used it to find the wavelength solution with *gswavelength*, making certain that we used the updated line data as input while running the routine. Reduced arcs should then be transformed with *gstransform* to obtain the *wavtran* parameters. We inspected all transformed arcs for spurious lines, making certain that the set we have used in the final calibrations are all free of problems.

The wavelength calibration was then performed for all reduced science frames with the routine *gstransform*, once for each setting, using all reduced MOS frames relative to that setting as input, and for *wavtran* the one relative to the setting as well. At this stage, we combined all frames relative to the same field, grating, and central wavelength with *gemcombine*, which will preserve their multislit format. The end products are four reduced, calibrated, and combined spectral frames for each field (two for each grating, one for each central wavelength). Each frame contains 27 (field 1) or 29 (field 2) spectra of the HII regions. We inspected all spectra and verified that the major expected emission lines, such as $H\alpha$ and $H\beta$, were at the correct wavelengths.

To extract the 1D spectra from each frame, we used the *gextract* routine, which also performs sky subtraction in the process. The manuals and instructions available for these gemini IRAF routines are extremely scarce, thus we instead used Massey's IRAF *apall* manual to determine the best ways to perform the spectral extraction. To assess the quality of our spectral data, we had to obtain a sensitive function for each grating, so we could compare the fluxes of same-target lines from different gratings, where present, and also estimate Balmer line flux ratios. The sensitive functions for each grating were derived from standard star observations.

The standard star G191B2B was observed in longslit mode to provide flux calibration. While we do not expect excellent absolute fluxes from this project, we do need relative calibration across gratings that will provide a correct reddening and abundance analysis. The standard star observations were obtained with gratings B600 (central wavelengths 5200, 4200, 6200 Å) and R400 (7400, 4200, 6200, 9000 Å) to have adequate wavelength coverage and overlaps. We retrieved the calibration arcs and flats relative to these settings from the Gemini Data Archive. The 1D spectra were treated similarly to the 2D spectra, by (i) combining and reducing the flats; (ii) reducing the science frames; (iii) reducing the arcs; (iv) finding the wavelength solution and parameters for the arcs, and (v) finding the wavelength solution for the science frames.

At this stage, we found a sensitivity function solution for the standard star. First, we sky-subtracted all standard star science frames that were previously reduced, and transformed them

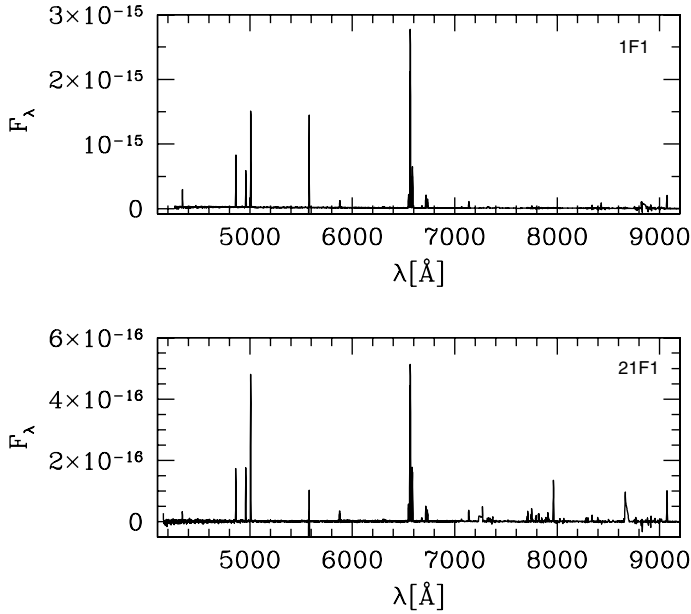


Fig. 2. Composed B600 and R400 spectra of 1F1 (*top panel*) and 21F1 (*bottom panel*), with fluxes in $\text{erg cm}^{-2} \text{s}^{-1}$.

according to their corresponding *wavtran* solutions with *gsky-sub*. Subsequently, we proceeded to extract the 1D spectra for all settings with *gsextract*. The next step was to obtain the sensitivity functions with *gsstandards*, which are used to calibrate the standard stars spectra. Given the setting of the standard star spectra, we have redundant information for the sensitivity function. We thus plotted all sensitivity functions for each grating and obtained a spliced function per grating that covers the wavelength domain needed to calibrate the MOS science frames. We used the same sensitivity functions for both fields.

The extracted science spectra were calibrated with *gscalibrate* and the appropriate sensitivity function. We compared $\text{H}\beta$ in both central wavelength settings of the B600 spectra for region 1, and the fluxes are within 4% in field 1 and within 0.4% in field 2. The routine *scombine* was used to combine pairs of spectra with different central wavelengths and to isolate the individual slitlets. In Fig. 2 we show the of 1D spectra of region 1F1 and 21F1, to show the typical S/N achieved in the bright emission lines.

2.3. Spectral analysis

In Table 2 we list the ID (Col. 1) and coordinates (Cols. 2 and 3) of the HII regions we observed. We searched the literature for any possible earlier identification of the regions, and we found possible pre-identification (within $5''$ of the Gemini coordinates) for several regions; we give the possible aliases in Col. 4. In this table and in the rest of the paper, we use the target nomenclature RFM, with R = region number and M = field number, for all HII regions analyzed. An N in Col. (5) in Table 2 means that the spectrum is not characterized well, so we do not publish its line fluxes in the tables (either the S/N was below 3 for the whole spectrum or a notable mismatch between the red and blue spectra was noted). Furthermore, an U in Col. (6) means that weak-line abundances are not available, while a Y in the same column indicates that abundances have been calculated in conditions of very low S/N plasma diagnostic lines for the temperatures, or if some of the major ionic lines were missing, the derived total abundances were unreliable. (We still give the plasma diagnostic and

Table 2. Regions with spectroscopy.

Region	α	δ	Alias ^a	Lines	Abun.
<i>Field 1</i>					
1F1	148.753	69.218	...	Y	Y
2F1	148.816	69.225	[MPC2001] 33	Y	U
3F1	148.812	69.211	[IW2001] P32	Y	Y
4F1 ^b	148.741	69.2231	...	Y	U
5F1 ^c	148.781	69.232	...	Y	N
6F1 ^d	148.808	69.213	...	Y	N
7F1 ^b	148.748	69.221	...	Y	N
8F1	148.876	69.212	...	Y	N
9F1	148.858	69.199	PSK 213	Y	N
10F1	148.908	69.201	PSK 249	Y	U
11F1	148.843	69.161	...	Y	U
12F1	148.804	69.180	[PR95] 51114	Y	U
13F1 ^e	148.942	69.183	PSK 279	Y	Y
14F1	148.925	69.181	...	Y	N
15F1	148.843	69.192	...	N	N
16F1 ^c	148.755	69.166	...	N	N
17F1	148.891	69.164	...	Y	N
18F1	148.792	69.171	...	Y	N
19F1 ^f	148.828	69.168	PSK 185	Y	Y
20F1	148.787	69.17	...	Y	N
21F1	148.764	69.190	PSK 122	Y	Y
22F1	148.735	69.176	[PR95] 51109	Y	N
23F1	148.902	69.158	...	Y	N
24F1	148.830	69.157	PSK 186	Y	U
25F1	148.904	69.152	PSK 246	Y	Y
26F1	148.877	69.147	...	Y	N
27F1	148.793	69.146	[IW2001] P30	Y	U
<i>Field 2</i>					
1F2	148.703	69.135	PSK 47	Y	Y
2F2	148.815	69.137	PSK 171	Y	Y
3F2	148.727	69.137	...	Y	N
4F2	148.832	69.126	PSK 189	Y	U
5F2	148.731	69.121	PSK 87	Y	N
6F2	148.665	69.125	...	Y	N
7F2	148.705	69.131	...	N	N
8F2	148.744	69.132	...	Y	Y
9F2	148.769	69.114	PSK 128	Y	N
10F2	148.748	69.117	...	Y	N
11F2	148.693	69.112	...	Y	Y
12F2	148.766	69.107	PSK 125	Y	N
13F2 ^g	148.764	69.099	PSK124	Y	N
14F2	148.820	69.095	...	Y	N
15F2	148.723	69.105	...	Y	N
16F2	148.853	69.084	[PR95] 50645	N	N
17F2	148.768	69.091	...	Y	N
18F2	148.802	69.087	[MPC2001] 21	N	N
19F2	148.714	69.073	PSK 63	Y	Y
20F2	148.685	69.077	...	Y	N
21F2	148.648	69.082	...	Y	N
22F2	148.734	69.069	...	Y	N
23F2	148.774	69.070	...	N	N
24F2	148.702	69.085	PSK 45	Y	Y
25F2	148.769	69.076	...	Y	N
26F2	148.841	69.059	[PR95] 50476	Y	N
27F2 ^g	148.836	69.063	MPC2011 42	Y	U
28F2	148.698	69.059	[PR95] 50475	Y	Y
29F2	148.782	69.055	[PR95] 50451	Y	N

Notes. ^(a) [MPC2001]: Magrini et al (2001); [IW2001]: Immler & Wang (2001); PSK: Petit et al. (1988); [PR95]: Perlmutter & Racine (1995). ^(b) $\text{H}\alpha$ emission is saturated; ^(c) Considerable difference between B600 and R400 fluxes ($\sim 50\%$); ^(d) Reddening correction not available; ^(e) $\text{H}\beta$ or $\text{H}\alpha$ have a non-Gaussian shape; ^(f) Emission line diagnostics indicate that it might be a PN; ^(g) This target shows a WR-type spectrum with stellar emission lines at $\lambda 4658$ and $\lambda 5812$, and C IV features.

Table 3. Measured line fluxes and intensities.

Region	$c_{H\beta}$ ion	λ [Å]	$F\lambda$ [$F\beta = 100$]	$I\lambda$ [$I\beta = 100$]
1F1	0.246 ± 0.005			
	H I	4340	34.6 ± 1.3	37.3
...

Notes. Full table available at the CDS.

ionic abundances in the tables, but do not use them for gradients or average abundances.)

We measured the emission-line fluxes with the IRAF routine *splot*. Errors in the fluxes were estimated with the *splot* analysis, as described in detail in the *splot* help file. Line errors are based on the observed parameters measured in each spectrum, such as pixel count in the continuum and inverse gain, and require a model for the pixel sigmas, which is based on Poisson statistics. For blended lines, *splot* offers a Montecarlo modeling of the line blend. We chose $N = 50$ iterations for the deblending functions. All measured line intensities were corrected for extinction when emission lines of the Balmer series were available (see notes in Table 2). In the few cases where the extinction constant is negative we assumed null extinction. We used the extinction correction formula with $T_e = 10\,000$ K for all targets, then obtained, when possible, electron temperature and density, and then recalculated the extinction constant with the appropriate theoretical $H\alpha/H\beta$ fluxes given the target electron temperature (see Osterbrock & Ferland 2006). Extinction-corrected line intensities are given in Table 3 (available at the CDS), where for each target we give its name, logarithmic extinction constant with its error, and then the line ID, wavelength, corresponding flux and its error, and the line intensity. All fluxes and intensities were scaled in the usual way, where $F_{H\beta} = 100$ and $I_{H\beta} = 100$.

We detected lines in common in the B600 and R400 gratings for 34 regions, thus we could assess the data analysis across gratings. We calculated $F_{B600} = 1.033 \times F_{R400} - 3.59 \times 10^{-19}$ for $H\alpha$, with correlation coefficient (in the log F) of 0.96. In Fig. 3 we show the residuals on the $H\alpha$ fluxes between the two gratings as a function of flux and distance from the galactic center. There is a net correlation of the residuals with flux, as expected given that fainter lines have larger relative errors. The mean relative differences between $H\alpha$ fluxes in the two gratings is 0.2 ± 0.18 ; only for regions 4F1, 5F1, 7F1, and 16F1 is the mean relative difference in the flux across grating notable. Such a difference is readily explained in 4F1 and 7F1, where the $H\alpha$ emission saturates the slit, and thus it is hard to get good sky subtraction for this bright emission line. For these two targets the [S II] doublet at $6717-31$ Å is present in both gratings, and we thus used these lines for the grating comparison, finding an average difference of $\sim 0.3 \pm 0.05$ between the sulfur lines from the B600 and R400 spectra both for 4F1 and 7F1, making us confident that the spectral data reduction is accurate. Regions 5F1 and 16F1 present a relative difference in $H\alpha$ across the gratings of ~ 0.5 with no apparent reason, excluding that these regions are very faint. The $H\alpha$ residuals do not correlate statistically with the distance from the galactic center. (We have excluded 4F1 and 7F1 from the statistical calculation, see above.)

The selection of our targets is based on $H\alpha$ pre-imaging, so some contamination of the HII sample with other sources is possible. We are particularly concerned about PN contamination, which would affect the presumed age of the population.

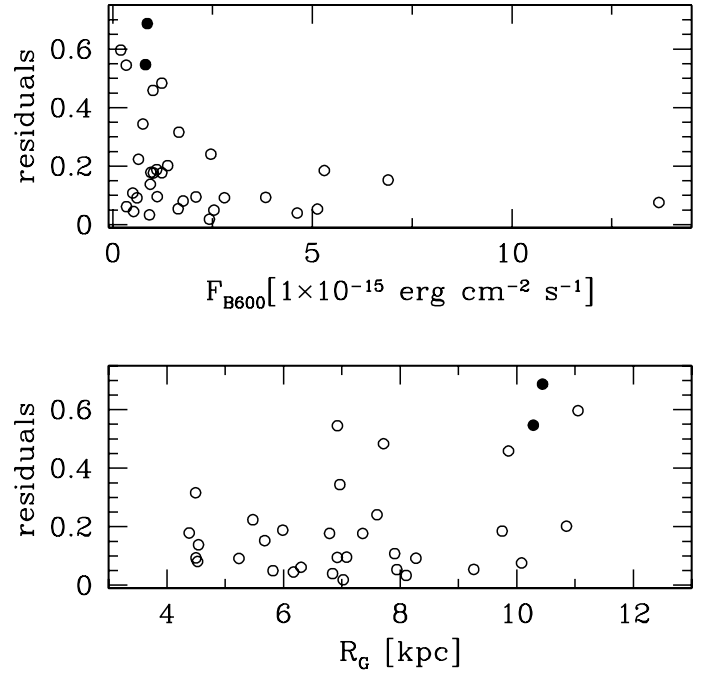


Fig. 3. Comparison of $H\alpha$ fluxes across gratings. *Top panel:* $H\alpha$ residuals ($\Delta F/F_{B600}$) against F_{B600} ; *bottom panel:* residuals against the distance from the galactic center. Filled circles in both panels indicate the location of 4F1 and 7F1 (see text).

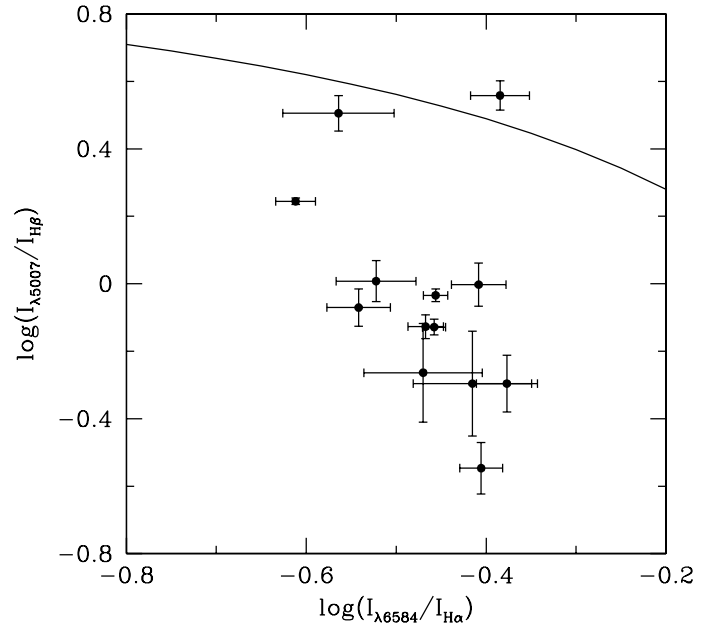


Fig. 4. Diagnostic plot for HII regions with abundance determinations. Regions below the curve are confirmed HII regions (see text). The region above the curve is 19F1, probably a PN.

The spectral analysis allows us to determine the likelihood that the regions observed are indeed young HII regions by comparing their fluxes with classical diagnostic diagrams (e.g., Baldwin et al. 1981; Kniazev et al. 2008). In Fig. 4 we show the $\log(I_{\lambda 5007}/I_{H\beta})$ vs. $\log(I_{\lambda 6584}/I_{H\alpha})$ plot for the analyzed regions, similar to the upper panel of Fig. 3 in Kniazev et al. (2008). We note that all the analyzed regions fall well below the $I_{\lambda 5007}/I_{H\beta} > (0.61 \times (I_{\lambda 6584} - 0.47)) + 1.19$ curve, with the exception of one region (19F1), which might be a PN instead. We

Table 4. Plasma diagnostics and abundances.

Region	
Parameter	value
1F1	
T_e [O III]	8850
T_e [N II]	12 809
He I/H	0.084
He/H	0.084
O ⁺ /H ⁺	3.139×10^{-5}
...	...

Notes. Full table available at the CDS.

determined the 19F1 oxygen abundance, but we excluded it from the gradient and average calculations.

It is worth mentioning that the position of regions 2F1 and 27F2 coincide, within $5''$, with previously classified *possible* PNe, while 18F2 was previously classified as a PN. We confirm that 2F1 and 27F2 are bona fide HII regions. The nature of 18F2 is still unclear because we do not have a reliable spectrum. The possible misclassification of this target does not affect the conclusions of this paper since we did not derive its abundances and thus we did not include it in the analysis. Diagnostic line intensities were used to calculate electron densities and temperature from the weak-line method, as in previous works (e.g., Stanghellini et al. 2010; Magrini et al. 2009b) with the IRAF *nebular* package. We used either [N II] $\lambda 5755 \text{ \AA}$ or [O III] $\lambda 4363 \text{ \AA}$ as the weak temperature diagnostic line, which were available for 13 regions once we excluded those whose diagnostic line fluxes were below $S/N \sim 3$. Electron densities were inferred from the [S II] $\lambda \lambda 6717\text{--}6731 \text{ \AA}$ doublet. When the sulfur lines were unavailable, or when their ratio falls off the low density end of the density-intensity curve domain, we assumed $N_e = 100 \text{ cm}^{-3}$.

In Table 4 (available at the CDS) we give the output of the plasma and abundance analysis, including the upper limits. We give the region name, then for each region we list the parameter (Col. 1) and its value (Col. 2). Parameters include electron density and temperatures, ionic abundances of ions whose emission lines had sufficient S/N , the ionization correction factors (ICFs) used in calculating elemental abundances, and the elemental abundances. The method used for abundance calculation is similar to the one used in other papers of this series (Magrini et al. 2009b; Stanghellini et al. 2010), where the ionic abundances are formalized in the IRAF routines *ionic* within *nebular*, and the ICF scheme is based on Kingsburgh & Barlow (1994).

Uncertainties in the abundances are due to (1) uncertainties in the abundance diagnostic lines, which are very small since the lines are very strong; (2) uncertainties in the diagnostic lines for electron temperature and density, the first being relatively high due to weak line diagnostics; (3) uncertainties in the ICF that we have assumed for determining atomic abundances. To get errors in all ionic abundances we propagated the errors in the diagnostic lines used in plasma diagnostics.

When calculating the final atomic abundances, we need to consider both the ionic abundances uncertainties and those from the ICFs (Kingsburgh & Barlow 1994). The oxygen ICF is equal to unity for all our regions, since $ICF(O) = ((He^+ + He^{2+})/He^+)^{2/3}$, and since we do not detect the He^{2+} emission in our targets, then the uncertainty in the ICF assumption for oxygen is zero. In the case of argon,

$ICF(Ar) = 1.873 \pm 0.41$ for all regions, so we add the ICF error (in quadrature) to the ionic abundance uncertainties. To obtain the final uncertainties of sulfur and nitrogen abundances we add, in quadrature, the uncertainties in the emission lines, both the ones of the abundance diagnostics and the weak line for plasma diagnostics, to the uncertainties in the oxygen abundances. We do so since the ICFs for sulfur and nitrogen directly depend on the oxygen abundances. The final uncertainties are very conservative. In Table 5 (Cols. 3 through 7) we give the abundances and their errors for the regions where the weak-line diagnostics were determined from diagnostic lines with $S/N > 3$.

We could simultaneously calculate electron temperatures from both the low- and high-excitation emission lines in only three regions (1F1, 21F1, and 8F2), and we used the ionization-appropriate diagnostics for the relevant ionic abundances. For all other regions we used the only temperature available for all ions. This translates into an additional uncertainty in the abundances, estimated to be much lower than other uncertainty factors. If we assume that the two temperatures are within 70% of one another, then the maximum error in abundance determination is 0.01 dex for the high-excitation and 0.02 dex for the low-excitation ions.

We found almost no correlation between oxygen and argon, or oxygen and sulfur abundance sets, similar to what we have seen in the MMT sample of HII regions in M 81 (Stanghellini et al. 2010).

3. Radial metallicity gradients and elemental enrichment

In this section we discuss the data points that constrain the metallicity gradient of HII regions and PNe, based on the weak-line abundances of emission-line targets. In Table 5 we give the abundances used for determining the gradient. To study the radial metallicity gradients, we calculated the galactocentric distances (R_G) of all regions with the method described in Stanghellini et al. (2010) and give them in Table 5 (Col. 2). Uncertainties in the galactocentric distances are mostly due to the galaxy inclination on the plane of the sky, and given the moderate inclination angle of the disk and the large distance to M 81, they are very low.

Together with the HII region sample observed with GMOS, we also used the sample from MMT spectroscopy (Stanghellini et al. 2010). Of the 19 PNe whose abundances were calculated by Stanghellini et al. (2010), seven are observed in the GMOS fields. We confirm that five of these are indeed PNe, while PN 45 and PN 70 turned out to be extended; at the distance of M 81, planetary nebulae are point sources, thus we reclassify these two extended sources as HII regions and include them in the MMT HII region sample presented here, while at the same time we remove them from the PN sample. PN33, also in the PN sample where MMT and GMOS observations overlap, is very close to another HII region, thus it is hard to determine whether it is extended. To calculate radial metallicity gradients, we used the HII regions in Table 5 and the HII regions and PNe in Table 5 of Stanghellini et al. (2010), but with PN 45 and PN 70 in it moved to the HII region sample. Patterson et al. (2012) also analyzed HII regions in M 81 and derived a handful of weak-line abundances, mostly relevant to the large galactocentric distances, which we discuss in the next section.

The best way to calculate fits for the gradients is with the *fitexy* routine in Numerical Recipes (Press et al. 1992). The *fitexy* routine handles both abundances and distance uncertainties and gives not only the slope and intercept but also the likelihood of

Table 5. Galactocentric distances and elemental abundances.

Name	R_G [kpc]	He/H	$\log(\text{N}/\text{H})+12$	$\log(\text{O}/\text{H})+12$	$\log(\text{S}/\text{H})+12$	$\log(\text{Ar}/\text{H})+12$
1F1	10.08 ± 0.017	0.084 ± 0.001	7.504 ± 0.151	8.124 ± 0.102	7.052 ± 0.146	6.379 ± 0.425
3F1	9.75 ± 0.080	0.094 ± 0.001	7.367 ± 0.261	8.470 ± 0.180	6.592 ± 0.260	6.198 ± 0.451
13F1	9.93 ± 0.322	0.149 ± 0.004	7.517 ± 0.491	8.478 ± 0.334	6.762 ± 0.475	6.195 ± 0.546
21F1	8.271 ± 0.005	0.124 ± 0.005	7.547 ± 0.291	8.105 ± 0.196	6.581 ± 0.292	6.566 ± 0.464
25F1	6.75 ± 0.178	0.082 ± 0.002	7.624 ± 0.344	8.159 ± 0.223	6.828 ± 0.316	...
1F2	6.921 ± 0.127	0.082 ± 0.001	7.397 ± 0.260	8.398 ± 0.200	6.558 ± 0.284	5.997 ± 0.464
2F2	4.787 ± 0.003	0.102 ± 0.006	7.678 ± 0.895	8.240 ± 0.579	6.846 ± 0.821	6.379 ± 0.795
8F2	5.676 ± 0.064	0.092 ± 0.002	$7.574 \pm 0/260$	8.555 ± 0.176	6.642 ± 0.250	5.984 ± 0.452
11F2	7.082 ± 0.237	0.059 ± 0.001	7.439 ± 0.319	8.776 ± 0.216	6.512 ± 0.307	6.195 ± 0.473
19F2	6.841 ± 0.339	0.070 ± 0.001	7.745 ± 0.300	8.712 ± 0.205	6.896 ± 0.294	6.325 ± 0.465
24F2	7.023 ± 0.322	0.070 ± 0.001	...	8.159 ± 0.145	...	6.702 ± 0.500
28F2	7.943 ± 0.418	0.156 ± 0.001	7.508 ± 0.303	7.877 ± 0.206	6.725 ± 0.294	6.188 ± 0.467

the fit in terms of χ^2 and its probability q^2 . Simple linear fits with least square routines can be misleading, especially if the x and y uncertainties have very different scales. In this case, the abundances are logarithmic quantities, and they have variable uncertainties, while the distances have very low uncertainties on the linear scale. A discussion of *fitexy* as being the best choice for astrophysical linear fits is found in Park et al. (2012).

Oxygen abundances are the best probes for metallicity gradients in HII regions. They are determined without ICF corrections, so their uncertainties are limited to uncertainties in the line intensities, which are low with the exception of the auroral diagnostic lines for the T_e determination. We deem that gradients determined from the GMOS and MMT samples analyzed jointly are best because based on a larger database. Both the MMT and GMOS samples alone are too small for statistical significance. (The present work was strongly motivated by the limited number of HII regions observed with MMT.)

In Fig. 5 we plot the oxygen abundances vs. galactocentric distance for different populations. The top panel of Fig. 5 shows HII regions from both the MMT and GMOS samples; for this joint sample, we found—by setting distance uncertainties to 0—a negative oxygen gradient $\Delta\log(\text{O}/\text{H})/\Delta R_G = -0.088 \pm 0.013 \text{ dex kpc}^{-1}$, with intercept 9.202 ± 0.107 . The *fitexy* routine gives $q = 0.051$ for this gradient, which is acceptable ($\chi^2/(\text{degrees of freedom}) \sim 1$). The data have a lot of scatter (see Fig. 5), so we did not expect a very high probability. We also determine that the fit residuals are spread between 0 and 0.7 dex, peaking at 0.2, where the abundance errors are typically between 0.1 and 0.5 dex. It is worth noting that the MMT sample alone would not produce a reliable gradient, given the limited size and distance span of the sample, as assessed in Stanghellini et al. (2010). The resulting oxygen gradient is consistent within the error with the strong-line gradient by Garnett & Shields (1987).

For the newly defined planetary nebula set (lower panel of Fig. 5, also in Table 5 of Stanghellini et al. 2010, minus PN45 and PN70), we found $\Delta\log(\text{O}/\text{H})/\Delta R_G = -0.044 \pm 0.007 \text{ dex kpc}^{-1}$, and intercept 8.587 ± 0.062 . Residuals are slightly smaller for PNe than for HII regions, and they are consistent with the abundance errors; the fit probability, $q = 0.053$, is better than, but comparable to, that of the HII regions fit. The two samples, HII regions and PNe, are thus directly comparable. We infer a moderate evolution of the radial metallicity gradient with time. In Fig. 6 we plot the top and bottom panels of Fig. 5 together, to view the different gradients. While HII regions

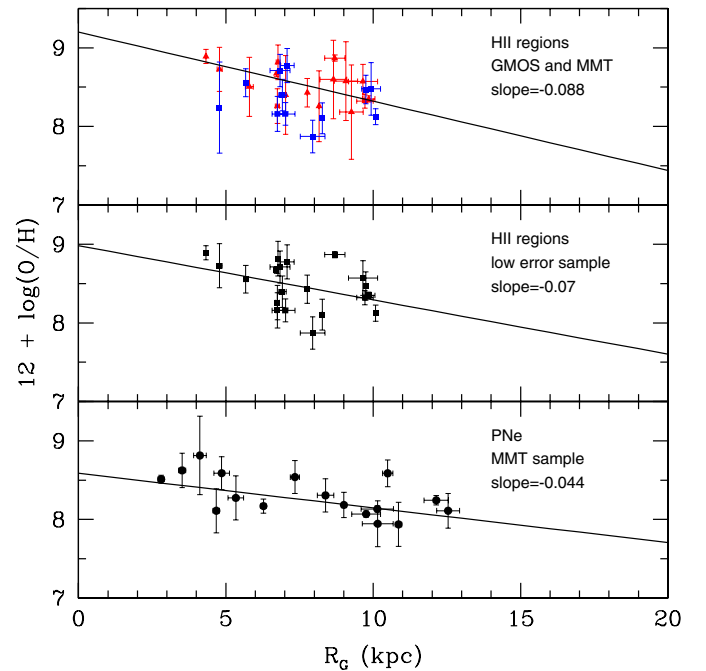


Fig. 5. Oxygen abundances, from weak-line analysis, versus distance from the galactic center. *Top panel:* HII regions from the GMOS (squares) and MMT (triangles) samples. *Middle panel:* selected sample with $\Delta\log(\text{O}/\text{H}) < 0.3$. *Bottom panel:* PNe from MMT observations.

mark the present-day galactic time, so that their α -elemental abundances narrate the evolutionary history of the galaxy since its formation, PN α -element abundances capture the metallicity makeup at progenitor formation. We did not observe Type I PNe in M81. Since Type I PNe have higher mass progenitors (Peimbert & Torres-Peimbert 1983), we can assume that all PN progenitors in M81 are roughly in the 1–2 M_\odot mass range, with a population age between 1 and 10 Gyr (Maraston 2005; see also Stanghellini et al. 2010).

Oxygen abundances and the location of the probes seem to indicate that the radial gradient determined by HII regions is steeper than that of PNe (see Table 6). It is worth noting that the radial range of PNe is more extended than that for HII regions. If we rigorously select only PNe in the radial range defined by the HII regions, we would have only eight targets left for the gradient estimate. Such a small sample is not adequate to get a gradient with the *fitexy* routine. A simple least-square fit to these eight data points gives an even flatter gradient, $-0.03 \text{ dex kpc}^{-1}$, which is again compatible with the results above. It is worth noting that

² q gives the probability that a correct model would give a value equal to or greater than the observed chi-squared.

Table 6. Radial metallicity gradients and means.

Element	Probe	Sample	N	Slope [dex kpc $^{-1}$]	Intercept log(X/H)+12	Mean log(X/H)+12
N	HII	GMOS,MMT	27	-0.067^a	8.07	7.62 ± 0.048
N	PNe	MMT b	14	-0.049^a	7.843	7.545 ± 0.059
O	HII	GMOS,MMT	28	-0.088 ± 0.013^c	9.202 ± 0.107	8.522 ± 0.049
O	PNe	MMT	17	-0.044 ± 0.007^c	8.59 ± 0.062	8.379 ± 0.068
Ne d	HII	MMT	6	7.979 ± 0.117
Ne d	PNe	MMT	6	7.813 ± 0.103
Ar	HII	GMOS,MMT	23	-0.037 ± 0.016	6.27 ± 0.143	6.21 ± 0.057
Ar d	MMT	PNe	4	6.077 ± 0.144

Notes. a *Fitexy* gives $q = 0$, slope calculated with least square method instead. b Note that MMT samples of both PNe and HII regions are slightly different from those of Stanghellini et al. (2010), since two PNe have been newly classified as HII regions; c *Fitexy* gives $q = 0.051$ for HII regions, 0.053 for PNe; d Sample on restricted domain, inadequate for calculating gradients.

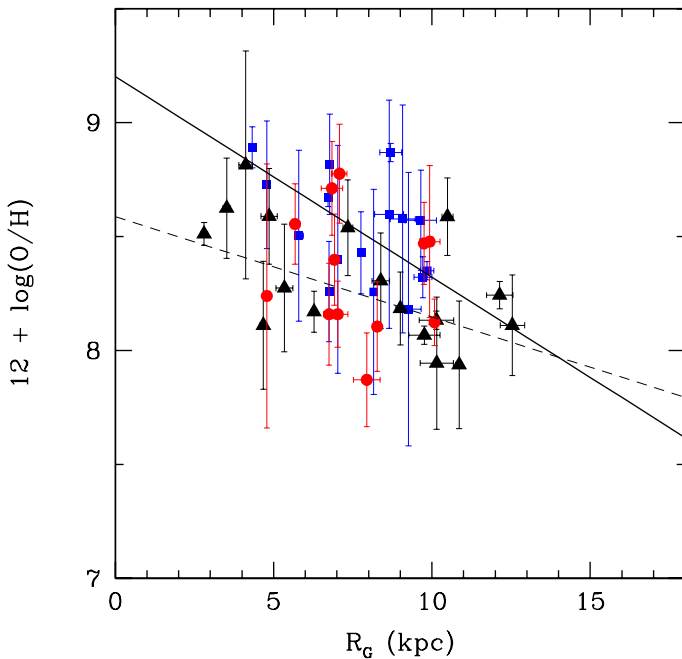


Fig. 6. Oxygen abundances, from weak-line analysis, versus distance from the galactic center, for HII regions and PNe. Symbols are as in Fig. 5. Lines are the fits as in Fig. 5 to the MMT+GMOS HII region samples, and the PNe.

several HII region abundances carry very large uncertainties. If we only select HII regions with $\Delta \log O/H < 0.3$ (middle panel of Fig. 5), we find a more constrained set of regions, where a direct least square fit gives a slope of -0.07 dex kpc $^{-2}$. Finally, if we were to eliminate the region with smallest galactocentric radius from the sample, we would obtain a similar fit with slope -0.08 ± 0.015 dex kpc $^{-1}$ and $q = 0.05$. If instead we were to eliminate the HII region with the largest galactocentric distance, the *fitexy* routine would not converge. In summary, while statistical analysis indicates that the radial metallicity gradient is steepening with time, clearly more abundances of regions with greater galactocentric distances are needed to pin down the gradient evolution for this galaxy. This has implications in our conclusions (see Sect. 5).

The indication of a gradient evolution that we found covers a rather limited galactic baseline, and it cannot be extended to α elements other than oxygen, given the limited samples for which neon and argon abundances are available in HII regions

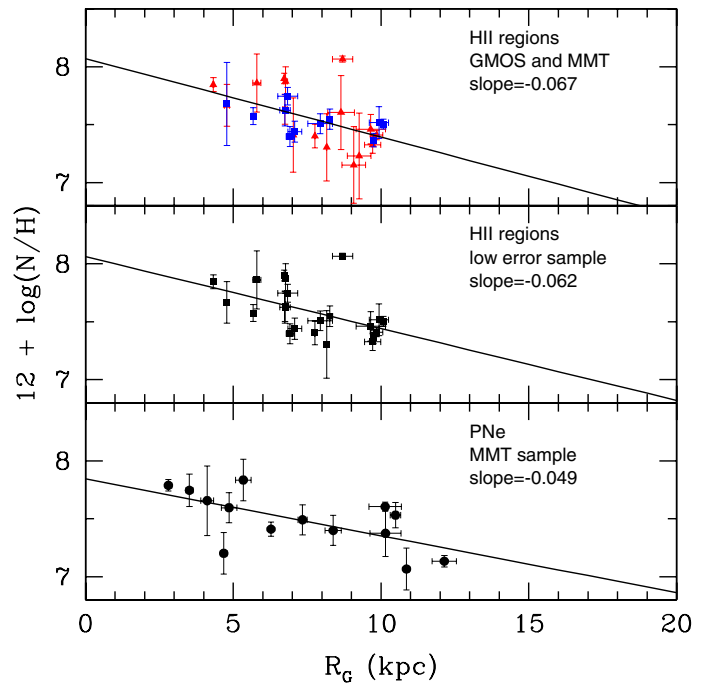


Fig. 7. Nitrogen abundances from weak-line analysis versus distance from the galactic center. Panels, symbols, and lines as in Fig. 5.

and PNe of M 81, and given the intrinsic uncertainties of sulfur abundances. If we include the four HII regions with weak-line oxygen abundances and with $R < 16$ kpc (i.e., the inner regions) in Patterson et al. (2012) in the sample we would obtain a gradient slope of $\sim -0.08 \pm 0.01$ dex kpc $^{-1}$ and an average oxygen abundance of $3.4 \pm 1.9 \times 10^{-4}$, thus none of the conclusions regarding gradient evolution or enrichment would change notably. The outer regions analyzed by Patterson et al. (2012) are discussed in the next section.

Nitrogen also indicates the presence of a similarly negative gradient slope. Figure 7 shows the nitrogen gradient for HII regions and PNe, as in Fig. 5. Nitrogen is not an α -element, so gradient evolution is the result of both enrichment and AGB evolution, which means that the slopes of HII region and PN gradients could not be applied to infer the (lack of) gradient evolution. It is worth noting that the fit of nitrogen gradients for the HII regions presented in Fig. 7 does not converge to a suitably low χ^2 value. Both the complete HII region sample and the more limited low-error sample fits produce fairly high χ^2 values with $\chi^2/(\text{degrees}$

of freedom) ~ 10 , with low fit probabilities. In Table 6 and in the figure we give the least-square fits, weighted with the uncertainties, which does not produce fit uncertainties.

Although sulfur abundances are notoriously unreliable, we still report them in the abundance tables, but we do not feel they should be used for detailed gradient analysis. The argon gradient of the combined sample is also moderately negative, but with a relatively larger error bar. It is worth noting that the ICF for the sulfur abundances is calibrated on PNe (Kingsburgh & Barlow 1994), while different calibrations seem to fit HII regions better, and in general sulfur abundances suffer from unpredicted deviations from expectations. A reasonable sample of PN for argon gradient determination is not available.

In Table 6, we give the abundance means, in logarithmic form, with their uncertainties. It is worth noting that all elements present a high level of scatter in the M 81 sample and that the HII region abundances are more scattered than the PNe. A measure of an average galactic elemental enrichment can be inferred from the average abundances of HII and those of the PNe. Enrichment is noted in all α -elements studied here. Since we are comparing HII regions and non-Type I PNe, we are probing a time lag of about 6 Gyr, on average, in stellar populations (see also Maraston 2005; Stanghellini et al. 2010). The amount of α -elemental enrichment is 0.14 ± 0.08 dex for oxygen, which is consistent with marginal enrichment. Naturally, given the large scatter of the HII region abundances, such enrichments only indicate a trend. Enrichment values calculated for the other α -element are similar to that of oxygen, but the high scatter and the small sample sizes make the uncertainties high and the result not statistically significant.

4. Discussion

4.1. A break in the radial metallicity distribution?

In Fig. 8 we show our HII region oxygen abundances vs. distances plotted together with those HII regions analyzed by Patterson et al. (2012) whose abundances are based on weak-line plasma diagnostics, thus directly comparable to our sample. The broken line, based on the oxygen gradient given in Table 6, is compatible with the inner regions from Patterson et al. (2012). The region at 16 kpc is Münch-1, whose abundance of $\log(\text{O}/\text{H}) = 8.1$ is compatible within the errors with the inner gradient, and it is ~ 0.4 dex lower than the average abundance of the inner regions. On the other hand, region 28 (or KDG 61, farther than 30 kpc from the center) is incompatible with the inner gradient, and it indicates gradient flattening in the outer regions of M 81. The HII region coincident with the position of the dwarf galaxy KDG 61 has been studied in detail by Makarova et al. (2010). The redshift difference between the HII region and the galactic stellar population is higher than the expected velocity dispersion within the dwarf galaxy, so the HII region most likely belongs to the M 81 disk. On the other hand, there is some uncertainty about whether Münch-1 really belongs to the M 81 disk.

Based on the best data available, those in Fig. 8, the resulting scenario is compatible with a negative gradient in the inner disk and a basically flat gradient in the outer disk, but to confirm the sharp abundance break between approximately 10 and 16 kpc ($R_{25} = 14.6$ kpc in M 81, Scarano & Lepine 2013), one would need to collect additional data in the general distance range where Münch-1 is located. The field surrounding Münch-1 is very rich in HII regions (Greenawalt et al. 1998), whose spectroscopic analysis is feasible with 8 m class telescopes. It is worth recalling that breaks in the radial metallicity gradients have

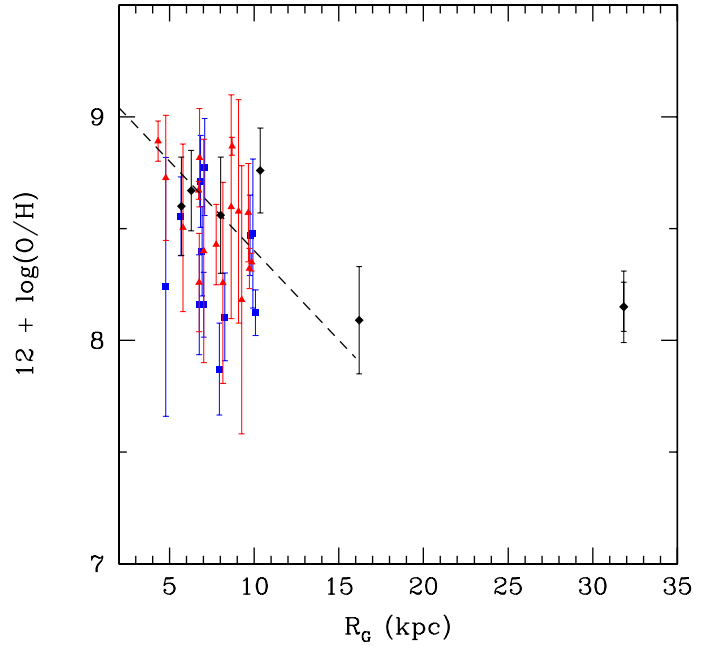


Fig. 8. Oxygen vs. galactocentric distance in HII regions of M 81 as in Fig. 5 (bottom panel), but including the Patterson et al. (2012) weak-line abundances (diamonds). The line corresponds to the gradient for $R_G < 16$ kpc, including the data from Patterson et al. (2012) with $R_G < 16$.

already been observed in several spiral galaxies. Bresolin et al. (2009, 2012) have shown that a break around R_{25} is evident in several large spirals, such as NGC 3621 and NGC 1512; unfortunately, these conclusions are based for the most part on strong-line abundances, corroborated only by three to four weak-line data points per galaxy. While the metallicity breaks seem evident in these galaxies, the strong-line abundances do not always agree with the weak-line abundances, so these results remain to be confirmed.

From the modeling viewpoint, a break in the radial metallicity distribution of a spiral galaxy could be produced by (1) mixing and turbulence processes (e.g. effects of radial gas flows induced by bars); (2) galactic scale outflows, which would explain the enrichment of the circumgalactic and intergalactic medium via galactic winds (e.g., Tumlinson et al. 2011), and the origin of the mass–metallicity relation (Finlator & Davé 2008); and (3) enriched accretion, whose importance in defining the observed galaxy mass–metallicity and mass–gas fraction relations at $z > 1$ has been underlined by Davé et al. (2011).

4.2. Comparison of M 81 to other galaxies

Stanghellini & Haywood (2010) have shown that there is indication that the radial metallicity gradients are steeper for the young than the old stellar populations in the Galaxy. In M33 the young and old populations have marginally different gradient slopes, and the gradient evolution is minor (Magrini 2009b, 2010). Both results have been derived from emission line objects through weak-line abundance analysis. In this paper we have indicated that the oxygen gradients for PNe and HII regions are negative, and that they are different within the errors. We have also shown that the $\log(\text{O}/\text{H})$ vs. R_G distributions for HII regions and PNe are statistically different, and consistent with the radial oxygen gradient of HII regions steeper than that of PNe. We illustrate this in Fig. 9, where we plot the oxygen gradient slope, in dex kpc^{-1} , against the average age of the probing stellar population.

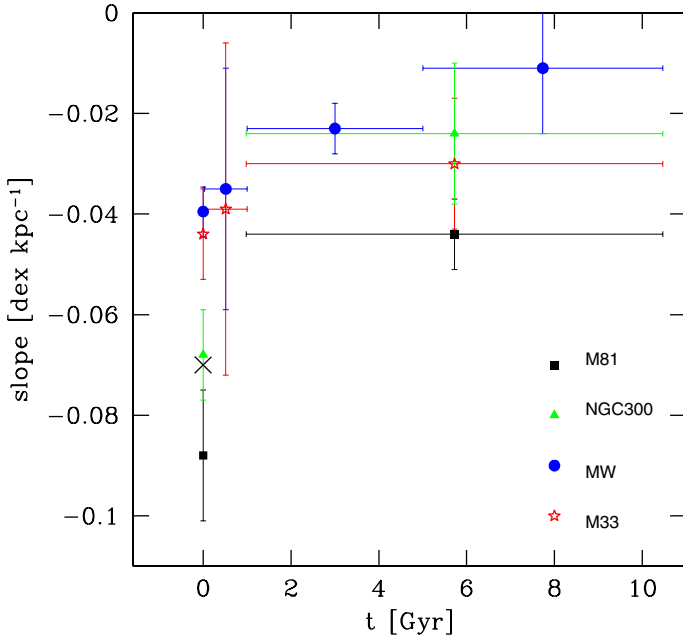


Fig. 9. Evolution of the oxygen gradient for several galaxies, derived from the PN and HII region gradients, adapted from Stanghellini et al. (2010). The data points for M81 have been updated considering the gradient derived here, and include all slopes of Fig. 5: squares are for best statistical gradients, with converging fits and χ^2 /(degrees of freedom) ~ 1 ; the cross at $t = 0$ indicates the location of the gradient from the middle panel of Fig. 5, where only low-uncertainty data points have been included. The data points for NGC 300 are from Stasinska et al. (2013).

We place the HII regions at $t = 0$, and the PN population at their likely average age, as described in Stanghellini et al. (2010), considering that there are no Type I PNe in M 81. The age error bar covers the age-span of the PN population. The plot seems to indicate that there is in fact an evolution of the radial metallicity gradient in M81. This conclusion holds when including Patterson et al.'s (2012) data for the inner HII regions.

We would like to add to the plot of Fig. 9 all galaxies whose metallicity gradients have been studied with weak-line oxygen abundances of PNe and HII regions. It would not be straightforward to add Sanders et al.'s (2012) data for M31 to Fig. 9. In fact, only four HII regions in M31 have weak-line abundances, so that a gradient based on them would be very uncertain. According to Sanders et al. (2012), the PNe in M31 show a flat weak-line gradient. The only other spiral galaxy that to our knowledge has enough PN and HII region abundances from weak-line analysis to be compared with the others of Fig. 9 is NGC 300 (Stasinska et al. 2013). In NGC 300 the PN gradient is shallower than the HII region one. If we translate the gradients given by Stasinska et al. (2013), which are referred to as R_{25} , to gradients in dex kpc^{-1} , we obtain $\Delta \log(\text{O}/\text{H})/\Delta R_G = -0.024 \pm 0.014$ (PNe), and -0.068 ± 0.0091 (HII regions), as shown in Fig. 9.

While the oxygen gradient slopes plotted in Fig. 9 are all based on weak-line abundances, and they seem to indicate that the metallicity gradients for the PNe are always flatter than those of HII regions, we are well aware that each of these derivations has its own selection effects and intrinsic problems. For the Galactic sample, the distance uncertainty problem is present, although greatly alleviated by the use of the Magellanic Cloud distance calibration (Stanghellini et al. 2008). Abundances of PNe and HII regions are based on temperatures derived from auroral lines of [O III] or [N II], and it is well known that emission

from the O^{+2} ion acts as a major coolant for HII regions and PNe, whose efficiency tends to increase with metallicity, making the corresponding auroral emission line very faint. A selection effect against metal-rich regions is thus possible when based on this emission line. Our regions in M81 have been selected through $\text{H}\alpha$ imagery, thus such a selection effect is minimal in our sample. A marginal selection effect toward high $\text{H}\alpha$ -emission regions is possible.

Planetary nebula models that take the oxygen abundance of the population into consideration show that the intensity ratio of the [O III] 5007 Å emission line vs. $\text{H}\beta$ declines with metallicity if we select ionizing stars at the peak of their temperature evolution (Stanghellini et al. 2003). By running Cloudy (Ferland et al. 2013) models similar to those of Stanghellini et al. (2003) we find that the 4363 Å intensity relative to $\text{H}\beta$ decreases from ~ 0.2 to ~ 0.1 going from solar to SMC metallicity, all other input parameters being identical. A similar situation probably occurs for HII regions, and the reason is that metal-poor environments favor the production of carbon-rich stars. This effect has the consequence that HII regions in low-metallicity environments have higher carbon abundances; consequently, their cooling is provided mostly by the CIII line in the UV. While UV observations should help in quantify this behavior, it would seem improbable that a huge selection effect against high metallicities is in place in M81.

The results of Fig. 9 are compatible with steepening of the metallicity gradient with time, with the spiral galaxies forming inside-out, with infall of pre-enriched gas, or with enhanced feedback. Gibson et al. (2013) have produced metallicity gradients in a cosmological context by modeling isolated, Milky Way-type galaxies at various redshifts and assuming a priori that the formation is inside-out. For the isolated disk galaxy models with enhanced feedback they reproduce a curve that fits the Milky Way data in Fig. 9 perfectly if the look-back ages were translated into redshift with a cosmological calculator (Wright 2006) and standard assumptions (open CDM model). Gibson et al. (2013) found, with their MaGIC g1536 simulation, that the gradients are fairly flat for all populations back to $z \sim 1.5$, with the (negative) slope steepening with time. We encounter this same behavior in all spiral galaxies where both PN and HII region gradients could be determined by weak-line analysis. For M81, the comparison should be done with models that include group components.

Interestingly, the Gibson et al. (2013) models indicate that galaxies forming inside out in groups seem to show steeper metallicity gradients than those of galaxies in isolation. M81 is the only galaxy in the set discussed in our Fig. 9 belonging to a loose group, and it also happens to display the highest (negative) gradient slopes. The environment can affect the gradient slope, because metallicity gradients for both PNe and HII regions seem to be steeper in M81 than in the Galaxy, as noted by Stanghellini et al. (2010). It is worth noting that Sanchez et al. (2014) have found that metallicity gradients of HII regions in spiral galaxies belonging to groups are flatter than those in isolation. While we cannot assess whether the gradient evolution that we find is compatible with the Sanchez et al. work (they do not quote gradient uncertainties), we note that they use strong-line oxygen abundances, which can give different results from the weak-line analysis, and they also estimate metallicity gradients in the $0.3\text{--}2 \times R_{25}$ radial domain, while ours is limited to $R_{25} < 1$.

Without concluding that all galaxies in Fig. 9 have had an inside-out chemical evolution and pre-enriched gas infall, this hypothesis of galaxy formation would be compatible with the

observed framework. While we find mild evidence of gradient steepening with time, which is compatible with the scenario described by Gibson et al. (2013), we are aware that inside-out galactic disk formation may also produce gradient flattening with time, depending on other assumptions, thus our findings are by no means a clear indication that the inside-out disk formation is at work. With all other conditions being equal, the radial metallicity gradient seems to be negatively steeper for the lower mass galaxy. (Only stellar mass is considered here.)

We also took the Hubble type of the observed galaxies into account, as given by Zaritsky et al. (1994), when comparing the radial oxygen gradients for the galaxies of Fig. 9 to one another. We multiplied the gradient slopes by R_{25}^3 for the comparison. We found that the (HII region) oxygen gradient slope relative to R_{25} for M33 (type 6) and NGC 300 (type 7) are very similar, -0.042 and $-0.36 \text{ dex}/R_{25}$, respectively, as expected given their similar Hubble type, while the M 81 (type 2) absolute gradient slope is $\sim -1.3 \text{ dex}/R_{25}$, which seems to indicate a steeper gradient for an earlier Hubble type galaxy. This result does not contrast with the Zaritsky et al. (1994) trends and may instead indicate either that the environment affects the Hubble type-gradient trend or that the break in the M 81 galactic gradient carries more weight than seen so far with the available data.

It is worth noting that the inside-out galaxy formation associated to pre-enriched infall is not the only explanation of the presented data. In fact, models of galaxy evolution produce a degeneration of results if we consider radial migration. If for example, we consider the models by Kubryk et al. (2013) or Minchev et al. (2013), we see that the older stellar populations suffer a much larger migration than the young ones; therefore, the observed gradient difference between PNe and HII regions could in principle be due to stellar migration alone. Kubryk's (2013) models invoke a strong bar, which might not be the case for M 81. In the Galaxy, appropriate demigration of the observed PN populations would compensate for the observed metallicity gradient evolution (Stanghellini & Haywood, in prep.). While beyond the scope of this paper, it is worth underlining that current models cannot be uniquely constrained by the available data.

5. Conclusion and future work

Weak-line abundance analysis was performed for a sample of HII regions in M 81, based on GMOS/Gemini multi-object spectroscopy. Together with other datasets we have collected in the past with the MMT, we found oxygen enrichment of $0.14 \pm 0.08 \text{ dex}$ in M 81.

We also found a radial metallicity gradient $\Delta \log(\text{O}/\text{H})/\Delta R_G = -0.088 \pm 0.013 \text{ dex kpc}^{-1}$, when using HII regions as probes. Compared to the PN gradient, which is recalculated here based on new PN identifications to be $-0.044 \pm 0.007 \text{ dex kpc}^{-1}$, this result is consistent with the metallicity gradient steepening with time since galaxy formation, if stellar migration is not accounted for. Compared to other galaxies for which these diagnostics are available, there is consistency of gradient steepening with time in the Galaxy, M33, and NGC 300, in addition to M 81. It appears that the gradient has steepened in M 81 more than in the other galaxies examined by weak-line abundances.

Our M 81 data are consistent with a negative HII region oxygen gradient in the inner galaxy, but they cannot exclude a flat gradient in the outer galactic regions, as indicated by

Patterson et al. (2012). A better handle on this possibility could be offered by observing other M 81 fields in the outer zones where the gradient seems to break. This would actually be the first direct test of a radial metallicity break by using only weak-line abundances.

The results obtained in this work are based solely on weak-line abundances from direct empirical methods. We avoided mixing the weak-line and strong-line derived abundances in order to obtain as pure a sample as possible. Deriving abundance using the strong-line method, possibly based on calibrations within our own observations would have certainly enlarged the sample size and lowered the formal gradient errors. Abundances derived from the two methods have different errors and might have different systematics. Furthermore, abundances from strong-line fitting formulae can have intrinsic errors of $\sim 0.5 \text{ dex}$, and the gradients in spiral galaxies are very shallow in general, which makes a bad combination for precise gradient studies.

Both the abundances presented here for M 81 from GMOS and those from the MMT observations have large error bars. We also note that, while statistically accurate, the difference in gradient is below 3σ and can be seen as tentative at this stage. Although we have been conservative in the error bar estimates, it is clear that this abundance determination method has been pushed very far here. It is worth noting that the GMOS time allocated for this project was about 70% of the time requested, thus the S/N for some of the diagnostic lines of regions that are listed now as lower limits to fluxes could have been completely analyzed with the original allocation of time. We plan in the future to observe additional HII regions to better define the metallicity gradient both for the inner and outer regions of this galaxy, in particular to augment the radial extent of the analysis. Also, we plan to extend this type of analysis to other spiral galaxies with different masses, metallicities, and environment conditions to enlarge the database to study metallicity gradients and their evolution.

More progress could be made with the data on hand by modeling the regions studied with photoionization analysis in a self-consistent way. We aim to reproduce the observed abundances with the observed emission lines and to continue enriching the sample of spiral galaxies for which these diagnostics will be available.

Acknowledgements. Based on observations obtained at the Gemini Observatory, which is operated by the Association of Universities for Research in Astronomy, Inc., under a cooperative agreement with the NSF on behalf of the Gemini partnership: the National Science Foundation (United States), the National Research Council (Canada), CONICYT (Chile), the Australian Research Council (Australia), Ministério da Ciência, Tecnologia e Inovação (Brazil) and Ministerio de Ciencia, Tecnología e Innovación Productiva (Argentina). Data presented here are from Gemini programs GN-2011B-Q-32 and GN-2011B-C-3. We thank Gemini staff for their help in supporting these observations. This research made use of the NASA/IPAC Extragalactic Database (NED), which is operated by the Jet Propulsion Laboratory, California Institute of Technology, under contract with the National Aeronautics and Space Administration. We are grateful to the referee for constructive suggestions on an early version of this paper.

References

- Baldwin, J. A., Phillips, M. M., & Terlevich, R. 1981, *PASP*, 93, 5
- Bland-Hawthorn, J., Krumholz, M. R., & Freeman, K. 2010, *ApJ*, 713, 166
- Boissier, S., & Prantzos, N. 1999, *Ap&SS*, 265, 409
- Bresolin, F., Ryan-Weber, E., Kennicutt, R. C., & Goddard, Q. 2009, *ApJ*, 695, 580
- Bresolin, F., Kennicutt, R. C., & Ryan-Weber, E. 2012, *ApJ*, 750, 122
- Cahn, J. H., Kaler, J. B., & Stanghellini, L. 1992, *A&AS*, 94, 399
- Chiappini, C., Matteucci, F., & Gratton, R. 1997, *ApJ*, 477, 765

³ The effective radii are from the NED catalog at <http://ned.ipac.caltech.edu/>

- Cresci, G., Mannucci, F., Maiolino, R., et al. 2010, *Nature*, 467, 811
- Davé, R., Finlator, K., & Oppenheimer, B. D. 2011, *MNRAS*, 416, 1354
- Davidge, T. J. 2006, *PASP*, 118, 1626
- Ferland, G. J., Porter, R. L., van Hoof, P. A. M., et al. 2013, *Rev. Mex. Astron. Astrofis.*, 49, 137
- Finlator, K., & Davé, R. 2008, *MNRAS*, 385, 2181
- Freedman, W. L., Madore, B. F., Gibson, B. K., et al. 2001, *ApJ*, 553, 47
- Freeman, K., & Bland-Hawthorn, J. 2002, *ARA&A*, 40, 487
- Friel, E. D., Janes, K. A., Tavaréz, M., et al. 2002, *AJ*, 124, 2693
- Garnett, D. R., & Shields, G. A. 1987, *ApJ*, 317, 82
- Gibson, B. K., Pilkington, K., Brook, C. B., Stinson, G. S., & Bailin, J. 2013, *A&A*, 554, A47
- Gottesman, S. T., & Weliachew, L. 1975, *ApJ*, 195, 23
- Greenawalt, B., Waltherbos, R. A. M., Thilker, D., & Hoopes, C. G. 1998, *ApJ*, 506, 135
- Hou, J. L., Prantzos, N., & Boissier, S. 2000, *A&A*, 362, 921
- Immler, S., & Wang, Q. D. 2001, *ApJ*, 554, 202
- Janes, K. A. 1979, *ApJS*, 39, 135
- Jones, T., Ellis, R., Jullo, E., & Richard, J. 2010, *ApJ*, 725, L176
- Jones, T., Ellis, R. S., Richard, J., & Jullo, E. 2013, *ApJ*, 765, 48
- Kingsburgh, R. L., & Barlow, M. J. 1994, *MNRAS*, 271, 257
- Kniazev, A. Y., Pustilnik, S. A., & Zucker, D. B. 2008, *MNRAS*, 384, 1045
- Kobayashi, C., & Nakasato, N. 2011, *ApJ*, 729, 16
- Kubryk, M., Prantzos, N., & Athanassoula, E. 2013, *MNRAS*, 436, 1479
- Kudritzki, R.-P., Urbaneja, M. A., Gazak, Z., et al. 2012, *ApJ*, 747, 15
- Ma, J., Zhou, X., Chen, J., et al. 2005, *PASP*, 117, 256
- Maciel, W. J., & Costa, R. D. D. 2013, *Rev. Mex. Astron. Astrofis.*, 49, 333
- Makarova, L., Koleva, M., Makarov, D., & Prugniel, P. 2010, *MNRAS*, 406, 1152
- Magrini, L., Perinotto, M., Corradi, R. L. M., & Mampaso, A. 2001, *A&A*, 379, 90
- Magrini, L., Corbelli, E., & Galli, D. 2007, *A&A*, 470, 843
- Magrini, L., Sestito, P., Randich, S., & Galli, D. 2009a, *A&A*, 494, 95
- Magrini, L., Stanghellini, L., & Villaver, E. 2009b, *ApJ*, 696, 729
- Magrini, L., Stanghellini, L., Corbelli, E., Galli, D., & Villaver, E. 2010, *A&A*, 512, A63
- Maraston, C. 2005, *MNRAS*, 362, 799
- Minchev, I., Chiappini, C., & Martig, M. 2013, *A&A*, 558, A9
- Mollá, M. 2014, *Adv. Astron.*, 2014, 162949
- Mollá, M., Ferrini, F., & Diaz, A. I. 1997, *ApJ*, 475, 519
- Nantais, J. B., Huchra, J. P., Zezas, A., Gazeas, K., & Strader, J. 2011, *AJ*, 142, 183
- Osterbrock, D. E., & Ferland, G. J. 2006, *Astrophysics of gaseous nebulae and active galactic nuclei*, 2nd. edn. (Sausalito, CA: University Science Books)
- Patterson, M. T., Waltherbos, R. A. M., Kennicutt, R. C., Chiappini, C., & Thilker, D. A. 2012, *MNRAS*, 422, 401
- Park, D., Kelly, B. C., Woo, J.-H., & Treu, T. 2012, *ApJS*, 203, 6
- Peimbert, M., & Torres-Peimbert, S. 1983, *Planetary Nebulae* (Dordrecht: D. Reidel Publishing Co.), Proc. of the Symp., 103, 233
- Perelmuter, J.-M., & Racine, R. 1995, *AJ*, 109, 1055
- Petit, H., Sivan, J.-P., & Karachentsev, I. D. 1988, *A&AS*, 74, 475
- Pilkington, K., Few, C. G., Gibson, B. K., et al. 2012, *A&A*, 540, A56
- Portinari, L., & Chiosi, C. 1999, *A&A*, 350, 827
- Press, W. H., Teukolsky, S. A., Vetterling, W. T., & Flannery, B. P. 1992, *Numerical recipes in FORTRAN*, 2nd edn. (Cambridge: University Press)
- Queyrel, J., Contini, T., Kissler-Patig, M., et al. 2012, *A&A*, 539, A93
- Rahimi, A., Kawata, D., Allende Prieto, C., et al. 2011, *MNRAS*, 415, 1469
- Roškar, R., Debattista, V. P., Quinn, T. R., Stinson, G. S., & Wadsley, J. 2008, *ApJ*, 684, L79
- Rupke, D. S. N., Kewley, L. J., & Chien, L.-H. 2010, *ApJ*, 723, 1255
- Sanchez, S. F., Rosales-Ortega, F. F., Iglesias-Paramo, J., et al. 2014, *A&A*, 563, A49
- Sanders, N. E., Caldwell, N., McDowell, J., & Harding, P. 2012, *ApJ*, 758, 133
- Scarano, S., & Lépine, J. R. D. 2013, *MNRAS*, 428, 625
- Sell, P. H., Pooley, D., Zezas, A., et al. 2011, *ApJ*, 735, 26
- Sestito, P., Bragaglia, A., Randich, S., et al. 2008, *A&A*, 488, 943
- Stanghellini, L., & Haywood, M. 2010, *ApJ*, 714, 1096
- Stanghellini, L., Shaw, R. A., Balick, B., et al. 2003, *ApJ*, 596, 997
- Stanghellini, L., Shaw, R. A., & Villaver, E. 2008, *ApJ*, 689, 194
- Stanghellini, L., Magrini, L., Villaver, E., & Galli, D. 2010, *A&A*, 521, A3
- Stasińska, G., Peña, M., Bresolin, F., & Tsamis, Y. G. 2013, *A&A*, 552, A12
- Tumlinson, J., Thom, C., Werk, J. K., et al. 2011, *Science*, 334, 948
- van Dokkum, P. G., Whitaker, K. E., Brammer, G., et al. 2010, *ApJ*, 709, 1018
- Vila-Costas, M. B., & Edmunds, M. G. 1992, *MNRAS*, 259, 121
- Werk, J. K., Putman, M. E., Meurer, G. R., & Santiago-Figueroa, N. 2011, *ApJ*, 735, 71
- Wright, E. L. 2006, *PASP*, 118, 1711
- Yong, D., Carney, B. W., & Friel, E. D. 2012, *AJ*, 144, 95
- Yuan, T.-T., Kewley, L. J., Swinbank, A. M., Richard, J., & Livermore, R. C. 2011, *ApJ*, 732, L14
- Yun, M. S., Ho, P. T. P., & Lo, K. Y. 1994, *Nature*, 372, 530
- Zaritsky, D., Kennicutt, R. C., Jr., & Huchra, J. P. 1994, *ApJ*, 420, 87