

# A2163: Merger events in the hottest Abell galaxy cluster

## II. Subcluster accretion with galaxy-gas separation

H. Bourdin<sup>1</sup>, M. Arnaud<sup>2</sup>, P. Mazzotta<sup>1</sup>, G. W. Pratt<sup>2</sup>, J.-L. Sauvageot<sup>2</sup>, R. Martino<sup>1</sup>, S. Maurogordato<sup>3</sup>, A. Cappi<sup>3,4</sup>,  
C. Ferrari<sup>3</sup>, and C. Benoist<sup>3</sup>

<sup>1</sup> Dipartimento di Fisica, Università degli Studi di Roma “Tor Vergata”, via della Ricerca Scientifica 1, 00133 Roma, Italy  
e-mail: herve.bourdin@roma2.infn.it

<sup>2</sup> Laboratoire AIM, IRFU/Service d’Astrophysique – CEA/DSM – CNRS – Université Paris Diderot, Orme des Merisiers,  
Bât. 709, CEA-Saclay, 91191 Gif-sur-Yvette Cedex, France

<sup>3</sup> Université de Nice Sophia-Antipolis, CNRS, Observatoire de la Côte d’Azur, UMR 6202 CASSIOPEE, BP 4229,  
06304 Nice Cedex 4, France

<sup>4</sup> INAF - Osservatorio Astronomico di Bologna, via Ranzani 1, 40127 Bologna, Italy

Received 30 April 2010 / Accepted 22 September 2010

### ABSTRACT

Located at  $z = 0.203$ , A2163 is a rich galaxy cluster with an intra-cluster medium (ICM) that exhibits extraordinary properties, including an exceptionally high X-ray luminosity, average temperature, and a powerful and extended radio halo. The irregular and complex morphology of its gas and galaxy structure suggests that this cluster has recently undergone major merger events that involve two or more cluster components. In this paper, we study the gas structure and dynamics by means of spectral-imaging analysis of X-ray data obtained from *XMM-Newton* and *Chandra* observations. From the evidence of a cold front, we infer the westward motion of a cool core across the E-W elongated atmosphere of the main cluster A2163-A. Located close to a galaxy over-density, this gas “bullet” appears to have been spatially separated from its galaxy (and presumably dark matter component) as a result of high-velocity accretion. From gas brightness and temperature profile analysis performed in two opposite regions of the main cluster, we show that the ICM has been adiabatically compressed behind the crossing “bullet” possibly because of shock heating, leading to a strong departure of the ICM from hydrostatic equilibrium in this region. Assuming that the mass estimated from the  $Y_X$  proxy best indicates the overall mass of the system and that the western cluster sector is in approximate hydrostatic equilibrium before subcluster accretion, we infer a merger scenario between two subunits of mass ratio 1:4, leading to a present total system mass of  $M_{500} \approx 1.9 \times 10^{15} M_\odot$ . Additional analysis of the spatially-separated northern subcluster A2163-B does not show any evidence of strong interaction with the main cluster A2163-A, leading us to infer that the physical distance separating the northern subcluster and the main component is longer than the projected separation of these components. The exceptional properties of A2163 present various similarities with those of 1E0657-56, the so-called “bullet-cluster”. These similarities are likely to be related to a comparable merger scenario.

**Key words.** galaxies: clusters: general – intergalactic medium – X-rays: galaxies: clusters

## 1. Introduction

A2163 is a rich galaxy cluster (richness class 2) located at  $z = 0.203$ . After initial X-ray detection by HEAO 1 A-1 (Kowalski et al. 1984), combined observations by the Ginga and Einstein X-ray satellites revealed the extraordinary properties of its hot gas content, with exceptionally high luminosity and average temperature ( $L_X = 3.5 \times 10^{38}$  W,  $kT = 13.9$  keV, Arnaud et al. 1992)<sup>1</sup>, suggesting a very high cluster mass. Extensive follow-up observations have further revealed several signatures of major merger events at various wavelengths in this hottest Abell cluster. ROSAT observations showed an irregular X-ray morphology (Elbaz et al. 1995), while ASCA observations revealed complex thermal structure (Markevitch et al. 1994), more recently confirmed from *Chandra* data (Markevitch & Vikhlinin 2001; Govoni et al. 2004; Owers et al. 2009). Evidence of a clear cluster substructure has been seen in weak lensing (see e.g.

Squires et al. 1997; Radovich et al. 2008) and in the galaxy density distribution (Maurogordato et al. 2008). Moreover, A2163 is known to host a prominent radio halo (Feretti et al. 2001, 2004) and to be a possible source of non thermal hard X-ray emission, as suggested by Rephaeli et al. (2006) from RXTE observations and Million & Allen (2009) from *Chandra* data analysis. Due to its high thermal energy content, A2163 is also a favoured target for SZ observations. First detected by Wilbanks et al. (1994) and used to determine the Hubble constant in Holzzapfel et al. (1997), A2163 is the first galaxy cluster detected in the submm band (Lamarre et al. 1998). A recent analysis of its SZ signal by Nord et al. (2009) has confirmed the exceptionally high temperature of its hot gas content independently of X-ray analyses.

Quite apart from the evidence for a very high total system mass, the exceptionally large amount of thermal energy trapped within the hot atmosphere of A2163 is likely to be related to ongoing cluster merger events. For this reason, the mass of A2163 has been challenging to estimate from X-ray analyses, which rely on the gas being in hydrostatic equilibrium. Indeed, departure of the cluster gas content from hydrostatic equilibrium

<sup>1</sup>  $10^{38}$  W  $\equiv 10^{45}$  erg s<sup>-1</sup>; X-ray luminosity in the 2–10 keV band has been corrected for luminosity distance assuming  $H_0 = 70$  km s<sup>-1</sup> Mpc<sup>-1</sup>, and  $\Lambda = 0.7$ .

**Table 1.** Effective exposure time of each *XMM-Newton* -EPIC and *Chandra*-ACIS observation.

<i>XMM-Newton</i> obs. IDs	Centre coordinates	MOS1 effective exposure time (ks)	MOS2 effective exposure time (ks)	PN effective exposure time (ks)
0112230601	16h15m46.01s -06°09'00.0"	8.8 (56.2%)	9.8 (63.5%)	5.7 (56.2%)
0112230701	16h16m48.00s -06°09'00.0"	11.8 (42.5%)	12.1 (43.4%)	6.1 (29.9%)
0112230801	16h15m46.01s -05°51'00.0"	16.1 (57.5%)	14.6 (52.2%)	10.2 (49.0%)
0112230901	16h14m34.01s -06°09'00.0"	7.4 (27.5%)	6.9 (25.5%)	3.3 (16.7%)
01122301001	16h15m46.01s -06°27'00.0"	19.5 (69.3%)	16.5 (58.8%)	15.4 (72.4%)
<i>Chandra</i> obs ID	Centre coordinates	ACIS effective exposure time (ks)		
01653	16h15m45.77s -06° 08' 55.0"	65.2 (91.7%)		

**Notes.** In brackets: fraction of the useful exposure time after solar-flare “cleaning”.

may explain the 50% dispersion observed between mass estimates of e.g. [Elbaz et al. \(1995\)](#) and [Markevitch et al. \(1996\)](#), performed assuming different temperature gradients in the cluster outskirts. It is also interesting to note the discrepancy between X-ray measurements of the gas temperature and the indirect weak lensing temperature estimate of [Cypriano et al. \(2004\)](#),  $kT_{\text{SIS}} = 6.63^{+2.03}_{-1.76}$  keV, obtained assuming energy equipartition between galaxies and gas.

Our recent analysis of optical data (WFI/2.2 m, VIMOS/VLT, UT3) in [Maurogordato et al. \(2008\)](#), hereafter Paper I) revealed the complex galaxy structure and dynamics in A2163, where a main cluster, A2163-A, is connected to a smaller subcluster to the North, A2163-B, via a galaxy bridge. The main cluster, A2163-A, itself has two brightest galaxies (BCG1 and BCG2), a bimodal morphology, and an exceptionally large velocity dispersion ( $1434 \pm 60 \text{ km s}^{-1}$ ). As part of a multi-wavelength analysis programme aimed at investigating the impact of cluster mergers on galaxy and ICM evolution, the present article focuses on the analysis of *XMM-Newton* and *Chandra* observations of the ICM in A2163. This work particularly aims to investigate the merger scenario involving the various components of A2163, and to provide new insights on the merger impact on X-ray mass estimates. Data preparation and analysis issues related to the *XMM-Newton* and *Chandra* observations are detailed in Sects. 2 and 3. Results obtained on ICM substructure and merger dynamics are discussed in Sect. 4, while Sects. 5 and 6 concern the gas pressure structure and mass of A2163. Discussion and concluding remarks are provided in Sect. 7. Except if otherwise noted, the confidence ranges on individual parameter estimates are 68%. In the following,  $M_\delta$  is defined as the mass within the radius  $r_\delta$  at which the mean mass density is  $\delta$  times the critical density of the universe at the cluster redshift. Moreover, intra-cluster distances are computed as angular diameter distances, assuming a  $\Lambda$ -CDM cosmology with  $H_0 = 70 \text{ km s}^{-1} \text{ Mpc}^{-1}$ ,  $\Omega_M = 0.3$ ,  $\Omega_\Lambda = 0.7$ . Given these assumptions, an angular separation of 30 arcsec corresponds to a projected intra-cluster distance of 100 kpc.

## 2. Observations and data preparation

### 2.1. Observations

#### 2.1.1. The *XMM-Newton* data set

The *XMM-Newton* data set is a mosaic composed of five observations obtained with the European Photon Imaging Camera (EPIC), and available in the *XMM-Newton* archive (observation IDs: 0112230601, 0112230701, 0112230801, 0112230901, 0112231001). This data set has been used to map the ICM thermal structure in the central region of A2163, and to investigate

its radial brightness and temperature structure on a large scale. Following a similar scheme as in [Bourdin & Mazzotta \(2008\)](#), hereafter BM08, we filtered the data set through spatial and temporal wavelet analyses in order to remove the contribution of point sources and soft proton flares. A summary of the effective exposure time remaining after filtering is provided in Table 1.

#### 2.1.2. The *Chandra* data set

The *Chandra* data set is a 72 ks pointing observation of A2163 obtained with the AXAF-I CCD Imaging Spectrometer (ACIS-I) and available in the *Chandra* archive (observation ID: 01653). These data have been used to map the gas brightness structure at high angular resolution near the cluster centre. Following a similar procedure as for the *XMM-Newton* data, we filter events in order to remove point source and soft proton flare contributions (see effective exposure in Table 1).

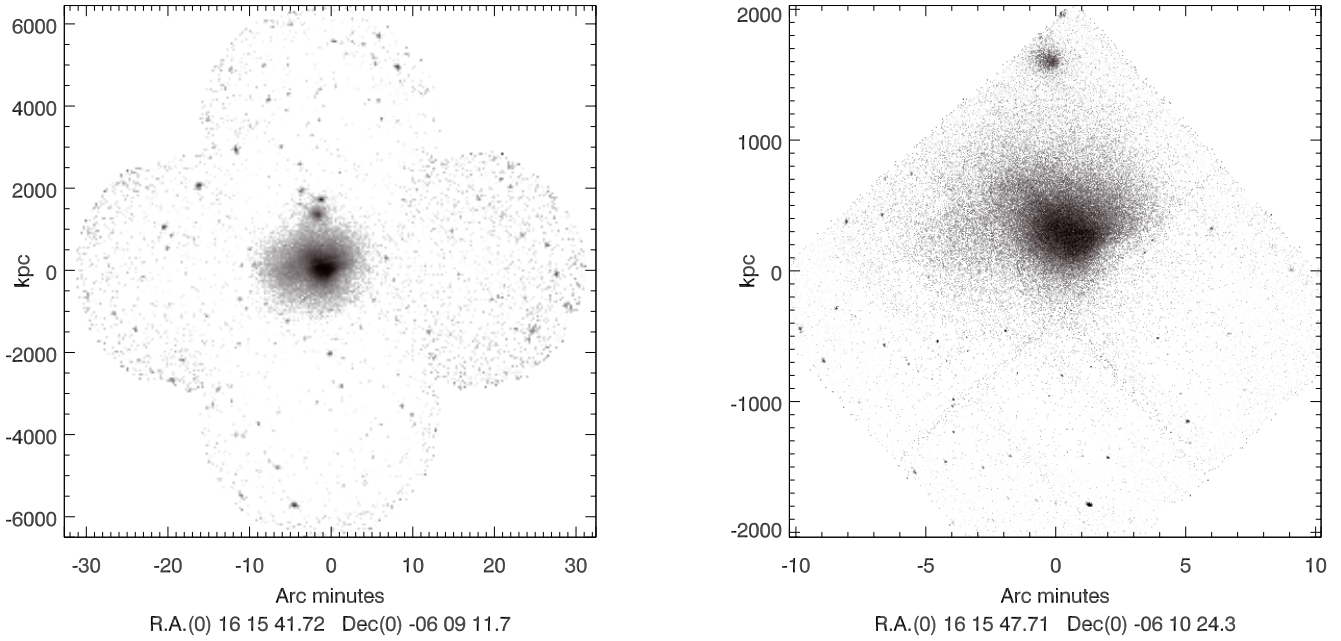
### 2.2. Data preparation

In order to perform self-consistent brightness measurements and spectroscopic estimates using the *XMM-Newton* or *Chandra* data sets (see Sect. 3), we re-sampled photon events within fixed grids matching the angular and spectral resolution of each focal instrument in sky coordinates ( $k, l$ ) and energy ( $e$ ). Events associated with the five *XMM-Newton* pointings have thus been gathered into three event cubes corresponding to each of the three EPIC instruments, while events associated with the *Chandra* pointing have been binned into a unique event cube. Following a similar procedure as described in BM08, we then associated a set of local “effective exposure” and “background noise” arrays to these event cubes. The effective exposure  $E(k, l, e)$  is computed as a linear combination of exposure times associated with each pointing, with correction for spatially variable mirror effective areas, filter and other focal instrument transmissions, CCD pixel area with correction for telescope motion, gaps and bad pixels<sup>2</sup>. The “background noise” array  $F_{\text{bck}}(k, l, e)$  has been modelled as the sum of 3D functions accounting for galaxy foreground and Cosmic X-ray Background (CXB) emissivities,  $F_{\text{gal,CXB}}(e)$ , and also false photon detection from the particle induced and out-of-time events,  $F_{\text{p}}(k, l, e)$  and  $F_{\text{oot}}(k, l, e)$ , respectively<sup>3</sup>:

$$n_{\text{bck}}(k, l)F_{\text{bck}}(k, l, e) = E(k, l, e) \times n_{\text{gal,CXB}} F_{\text{gal,CXB}}(e) + n_{\text{oot}}(k, l) F_{\text{oot}}(k, l, e) + n_{\text{p}}(k, l) F_{\text{p}}(e). \quad (1)$$

<sup>2</sup> Information about these instrumental effects have been obtained from the *XMM-Newton* -EPIC Current Calibration Files (CCFs) and *Chandra*-ACIS Calibration database (CALDB 4.1).

<sup>3</sup> In Eqs. (1) and (2), spectral models are decomposed into normalised energy distributions,  $F_i(e)$ , and counts per pixel  $n_i$ .



**Fig. 1.** *XMM-Newton* -EPIC exposure mosaic (left) and *Chandra*-ACIS exposure (right).

As described in Bourdin et al. (2004), we model the particle induced background  $F_p(e)$  as the sum of a dual power-law continuum and a set of detector fluorescence lines (see light blue curves on Fig. 2). This model has been fitted to a set of observations obtained during “closed” periods of the *XMM-Newton* telescopes, and stowed periods of the *Chandra* ACIS detector. For both the *XMM-Newton* and *Chandra* observations, the galaxy foreground and CXB emissivities,  $F_{\text{gal,CXB}}(e)$ , have been estimated within an external annulus located away from the target emission using offset pointings of the EPIC-*XMM-Newton* mosaic. Further details concerning our modelling of the extended foreground and background emissions are provided in Sect. 3.3.4.

### 3. Data analysis

#### 3.1. X-ray brightness measurements and spectroscopy

The event, “effective exposure”,  $E(k, l, e)$ , and “background noise”,  $F_{\text{bck}}(k, l, e)$ , arrays have enabled us to perform ICM brightness and average temperature measurements in various areas of the field of view by gathering pixels  $(k, l)$ .

We computed brightness estimates  $\Sigma_x(k, l)$  from photon counts  $n_{\text{evt}}(k, l, e)$  in the “soft” energy band (0.5–2.5 keV) as follows<sup>3</sup>:

$$\Sigma_x(k, l) = \frac{\sum_e n_{\text{evt}}(k, l, e) - n_{\text{bck}}(k, l) \sum_e F_{\text{bck}}(k, l, e)}{\sum_e F_{\text{ICM}}(kT_o, Z_o, N_{\text{H},o}, e) E(k, l, e)}, \quad (2)$$

where  $F_{\text{ICM}}(kT_o, Z_o, N_{\text{H},o}, e)$  is an emission model associated with average source temperature,  $kT_o$ , metallicity,  $Z_o$ , and Galactic hydrogen absorption  $N_{\text{H},o}$ . Hereafter, the source emission spectrum  $F_{\text{ICM}}(kT, Z, N_{\text{H}}, e)$  assumes an  $N_{\text{H}}$  absorbed emission modelled from the Astrophysical Plasma Emission Code (APEC, Smith et al. 2001), with the element abundances of Grevesse & Sauval (1998) and neutral hydrogen absorption cross sections of Balucinska-Church & McCammon (1992). It is altered by a local energy response matrix  $M(k, l, e, e')$  computed from response matrixes files (RMF) tabulated in detector

coordinates in the *XMM-Newton* -EPIC and *Chandra*-ACIS calibration data bases<sup>4</sup>.

Following this emission model, average temperatures  $kT(k, l)$  are computed from spectral fitting to the emission spectrum  $n_{\text{evt}}(k, l) F_{\text{evt}}(k, l, e)$ , registered in the energy band (0.7–12 keV):

$$n_{\text{evt}}(k, l) F_{\text{evt}}(kT, Z, N_{\text{H}}, e) = E(k, l, e) \times n_{\text{ICM}}(k, l) F_{\text{ICM}}(kT, Z, N_{\text{H}}, e) + n_{\text{bck}} F_{\text{bck}}(k, l, e). \quad (3)$$

#### 3.2. X-ray brightness, ICM density and temperature profiles

Through the above analysis, X-ray brightness and temperature profiles have been extracted assuming uniform emissivity within concentric annuli. We derived the radial brightness  $\Sigma_x(r)$  and associated Gaussian fluctuation  $\sigma_{\Sigma_x}(r)$  by averaging the local brightnesses  $\Sigma_x(k, l)$  of Eq. (2) in each profile annulus composed of  $N$  pixels  $(k, l)$ , as follows:

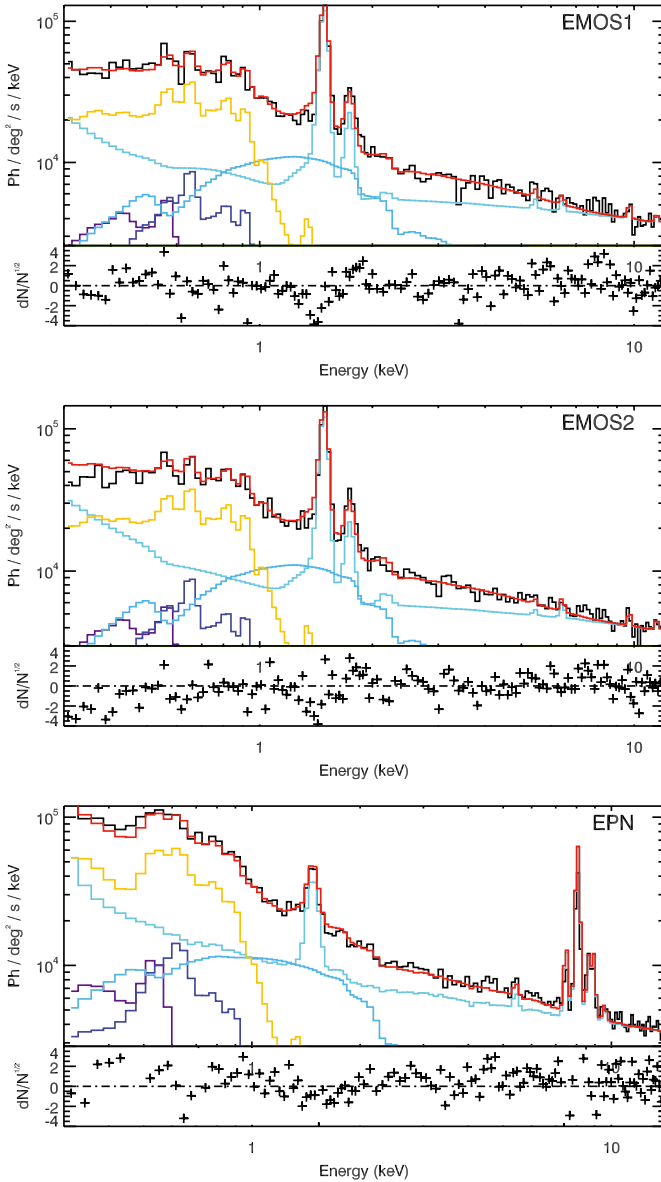
$$\Sigma_x(r) = \frac{1}{N} \sum_{k,l} \Sigma_x(k, l) \quad (4)$$

$$\sigma_{\Sigma_x}(r) = \frac{1}{N} \sqrt{\frac{\sum_{k,l} \frac{\sum_e n_{\text{evt}}(k, l, e)}{[\sum_e F_{\text{ICM}}(kT_o, Z_o, N_{\text{H},o}, e) E(k, l, e)]^2}}{}}. \quad (5)$$

Radial temperatures  $kT(r)$  and associated confidence interval  $\delta kT(r)$  have been computed within each annulus by fitting a uniform emission model to the data set. To do so, we averaged emission models of Eq. (3) associated with each pixel  $(k, l)$  of the annulus, and fitted an average set of spectroscopic parameters  $kT(r), Z(r), N_{\text{H}}(r)$  by means of a  $\chi^2$  minimisation.

These brightness and temperature profiles have been used to model the underlying density and temperature of the ICM, assuming spherical symmetry of the cluster atmosphere. This was

<sup>4</sup> EPIC response matrixes are computed from canned RMFs corresponding to the observation period provided by the *XMM-Newton* Science Operation Centre. ACIS response matrixes have been computed using the *Chandra* Interactive Analysis of Observations (CIAO) software and *Chandra*-ACIS Calibration database (CALDB 4.1).



**Fig. 2.** Background spectrum observable in the A2163 outskirts ( $r > 3$  Mpc) from the four external pointings in Table 1. Light blue: particle background noise. Cyan blue: Cosmic X-ray Background emission. Blue and Violet: TAE emission ( $kT_1 = 0.099$  keV,  $kT_2 = 0.248$  keV, see Kuntz & Snowden 2000, and details in Sect. 3.3.4). Orange: local Hot Bubble and North Polar Spur residue. Red and black: overall fit and data set.

undertaken by projecting and fitting parametric distributions of the radial emission measure,  $n_p n_e$ , and temperature,  $T(r)$ , to the observed profiles. Introduced by Vikhlinin et al. (2006), these parametric distributions are:

$$[n_p n_e](r) = n_0^2 \frac{(r/r_c)^{-\alpha}}{[1 + (r/r_c)^2]^{3\beta - \alpha/2}} \frac{1}{[1 + (r/r_s)^3]^{\epsilon/3}} + \frac{n_{02}^2}{[1 + (r/r_{c2})^2]^{3\beta_2}}, \quad (6)$$

$$T(r) = T_0 \frac{(r/r_t)^{-a}}{[1 + (r/r_t)^b]^{c/b}}. \quad (7)$$

In Sect. 4.2, the ICM emission measure and temperature profiles have been modelled by two step distributions with common

jump radius  $r_j$ , in order to calculate the physical characteristics of a cold front in the cluster atmosphere:

$$[n_p n_e]_{\text{cf}}(r) = \begin{cases} D_n^2 n_0^2 (r/r_j)^{-2\eta_1} \left[ \frac{1 + (r_j/r_{c1})^2}{1 + (r/r_{c1})^2} \right]^{3\beta_1}, & r < r_j \\ n_0^2 (r/r_j)^{-2\eta_2} \left[ \frac{1 + (r_j/r_{c2})^2}{1 + (r/r_{c2})^2} \right]^{3\beta_2}, & r > r_j \end{cases}, \quad (8)$$

$$T_{\text{cf}}(r) = \begin{cases} T_0, & r < r_j \\ D_T T_0, & r > r_j. \end{cases} \quad (9)$$

### 3.3. Imaging and spectral-imaging

#### 3.3.1. Imaging

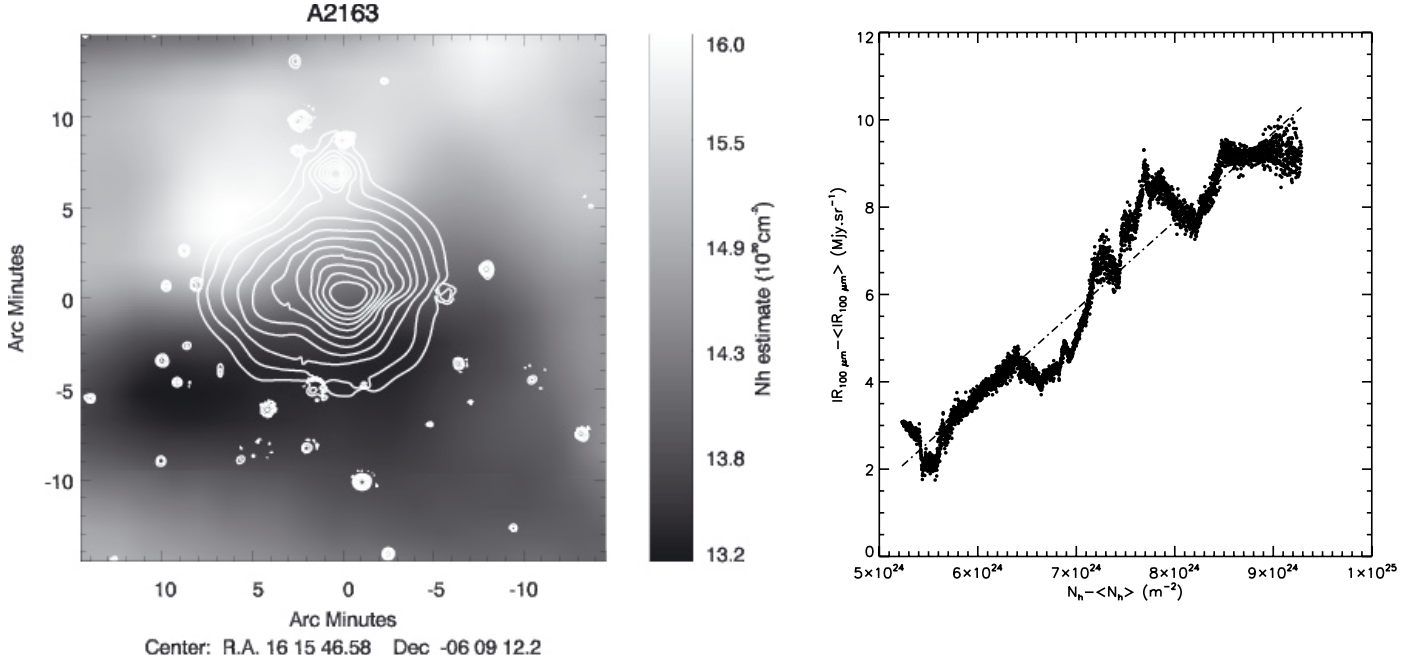
The ACIS-*Chandra* data set has enabled us to analyse the ICM brightness structure in A2163 at the highest angular resolution available. By means of two types of wavelet analysis, we first mapped the ICM brightness of the large-scale cluster emission, then isolated the brightness structure of the central region from contributions related to the cluster outskirts.

To map the large-scale ICM brightness, we first corrected “soft” photon (0.5–2.5 keV) counts for vignetting and background emissivity as detailed in Eq. (2), then analysed the corrected image following the redundant “a-trous” algorithm (Holschneider et al. 1989; Shensa 1992) implemented with B3-spline wavelets. A de-noised brightness map was then constructed from the overall wavelet transform of the image, with coefficients thresholded iteratively assuming that photon counts follow a Poisson distribution (see Bijaoui & Rue 1995; Starck & Pierre 1998, and references therein for details). In the top-left panel of Fig. 4, this map is overlaid on an *R*-band optical image obtained at the WFI/MPI 2.2 m telescope (see also Paper I).

To further isolate the ICM brightness structure in the cluster centre, we restricted a B3-spline wavelet analysis of a corrected photon image extracted in the [0.5–7.5] keV energy band to four high resolution scales, corresponding to a distance range of [1–120 arcsec]. The resulting high resolution residue of the ICM brightness map shown on Fig. 4 has been constructed by summing details of this restricted wavelet transform, with coefficients thresholded to a  $4\sigma$  confidence level.

#### 3.3.2. Spectral-imaging

In order to map the ICM temperature in A2163, we used the EPIC-*XMM-Newton* data set and applied the spectral-imaging algorithm detailed in Bourdin et al. (2004) and B08. Following this algorithm, a set of temperature arrays  $kT(k, l, a)$  with associated fluctuations  $\sigma_{kt}(k, l, a)$  are first computed on various analysis scales  $a$ , then convolved by complementary high-pass and low-pass analysis filters in order to derive wavelet coefficients. The wavelet coefficients are subsequently thresholded according to a given confidence level in order to restore a de-noised temperature map. Here, the signal analysis have been performed over 6 dyadic scales within an angular resolution range of  $\delta a = [3.4\text{--}220]$  arcsec. This was undertaken by averaging the emission modelled by Eq. (3) within overlapping meta-pixels  $(k, l, a)$ , and computing the  $kT(k, l, a)$  and  $\sigma_{kt}(k, l, a)$  arrays by means of a likelihood maximisation assuming the spatially variable Galactic  $N_H$  and foreground emission model discussed below in Sect. 3.3.3. The resulting ICM temperature map shown in Fig. 4 was then obtained from a B2-spline wavelet analysis (see B08 for details) with coefficients thresholded to the  $1\sigma$  confidence level.



**Fig. 3.** *Left:* galactic neutral hydrogen density column estimated in the neighbourhood of A2163, with contours of the [0.5–2] keV *XMM-Newton* – EPIC emission overlaid. *Right:* correlation factor,  $\frac{N_{\text{H}}}{\tau_{\text{IR}}}$ , relating IR emissivity to the Galactic  $N_{\text{H}}$  in a 5 square degree region of the sky centred on A2163. IR emissivity and Galactic  $N_{\text{H}}$  have been corrected for dependence on galactic latitude following the analytic approach of [Desert et al. \(1988\)](#). A correlation factor  $\frac{N_{\text{H}}}{\tau_{\text{IR}}}$  is computed between the average residual IR emissivity and Galactic  $N_{\text{H}}$  within sky regions corresponding to a fixed  $N_{\text{H}}$  interval of width  $\delta N_{\text{H}} = 10^{21} \text{ m}^{-2}$ .

### 3.3.3. Absorption by Galactic neutral hydrogen

Located close to the galactic plane, in the direction of the galactic centre ( $l = 19.1^\circ$ ,  $b = 37.2^\circ$ ), A2163 is placed behind a relatively strong column density of galactic neutral hydrogen,  $N_{\text{H}} \approx 1.5 \times 10^{21} \text{ cm}^{-2}$ . In this high  $N_{\text{H}}$  regime, temperature measurements are highly sensitive to spatial variations of the Galactic  $N_{\text{H}}$  on angular scales smaller than the cluster size, so that a precise modelling of these variations is required to map the ICM temperature. Indeed, as formerly shown by a ROSAT data analysis of [Elbaz et al. \(1995\)](#), the combination of the high average temperature of the ICM in A2163 with this high (and variable)  $N_{\text{H}}$  value makes temperature measurements highly degenerate with  $N_{\text{H}}$  estimates. For these reasons, we decided to model a priori the spatial variations of neutral hydrogen Galactic absorption across the cluster field of view.

To investigate the spatial variations of Galactic Hydrogen density column up to an angular resolution of about one arcminute, we used Galactic dust emissivity maps at  $100 \mu\text{m}$ . The spatial variations of the overall Hydrogen (i.e., both neutral HI, and molecular  $\text{H}_2$ ) density column are indeed spatially correlated with galactic dust emissivity,  $\tau_{\text{IR}}$ , in the  $100 \mu\text{m}$  IR band (see e.g. [Boulanger et al. 1996](#); [Snowden et al. 1998](#)). Moreover, as A2163 is located outside any Galactic molecular cloud<sup>5</sup>, the global budget of Hydrogen density column is dominated by neutral hydrogen in this region of the sky, enabling us to use galactic dust emissivity maps at  $100 \mu\text{m}$  as a tracer of  $N_{\text{H}}$  spatial variations. To model these variations, we follow a two step approach where large scale variations related to changes in the Galactic Interstellar Radiation Field are separated from smaller scale fluctuations. We used the IRAS/IRIS ([Miville-Deschênes & Lagache 2005](#)) and Leiden/Argentine/Bonn (LAB, [Kalberla et al. 2005](#))

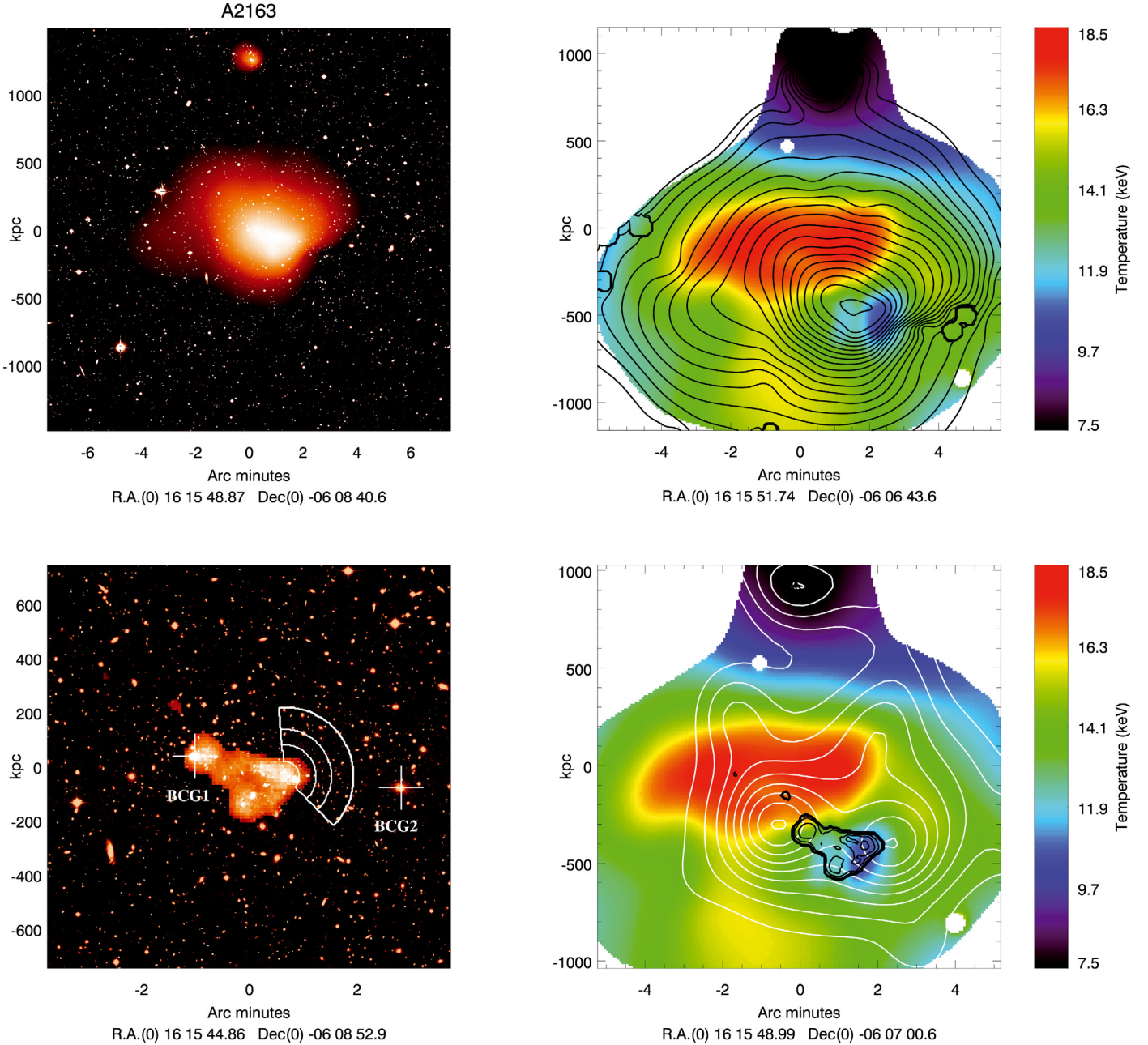
surveys of the all sky IR emissivity and Galactic  $N_{\text{H}}$ , and corrected their dependence with galactic latitude,  $b$ , by subtracting two cosecant laws with shape  $\frac{1}{\sin|b|}$ , following the analytic approach of [Boulanger & Perault \(1988\)](#) and Eqs. (3.1) and (3.2) of [Desert et al. \(1988\)](#). We then measured the large-scale correlation factor,  $\frac{N_{\text{H}}}{\tau_{\text{IR}}}$ , relating the residual IR emissivity and Galactic  $N_{\text{H}}$  in a 5 square degree region of the sky centred on A2163 (see also Fig. 3). We finally model the smaller scale spatial variations of  $N_{\text{H}}$  across the cluster field of view, by applying the  $\frac{N_{\text{H}}}{\tau_{\text{IR}}}$  factor to the IRAS/IRIS maps, and deducing the expected  $N_{\text{H}}$  map at high angular resolution. As shown in Fig. 3, this map reveals us  $N_{\text{H}}$  variations of the order of 20%, with a NorthEast-SouthWest gradient that could have strongly distorted X-ray spectroscopic estimates, if not taken into account.

### 3.3.4. Foreground and background spectral contributions

The spectral “background noise” model  $n_{\text{bck}} F_{\text{bck}}(k, l, e)$  includes not only contributions related to the instrumental noise, but also those due to the extended emission of Galactic foregrounds and the Cosmic X-ray background. Following the approach described in BM08, we model the Cosmic X-ray background with a power law of index  $\gamma = 1.42$  (see e.g. [Lumb et al. 2002](#)) and the Galactic foregrounds by the sum of several absorbed and unabsorbed thermal components.

As already noted by [Pratt et al. \(2001\)](#) and [Markevitch & Vikhlinin \(2001\)](#), the Galactic foreground emission near A2163 includes a strong excess in the soft band ( $E < 1 \text{ keV}$ ), with regards to the average emission expected from “blank sky” observations. Taking into account this excess, in addition to the local variations of  $N_{\text{H}}$  (see Sect. 3.3.3) is critical to perform any spectral analysis, in particular when measuring the ICM temperature in the cluster outskirts. As suggested by [Pratt et al. \(2001\)](#),

<sup>5</sup> See e.g. the large-scale CO survey of the Galactic plane by [Dame et al. \(2001\)](#).

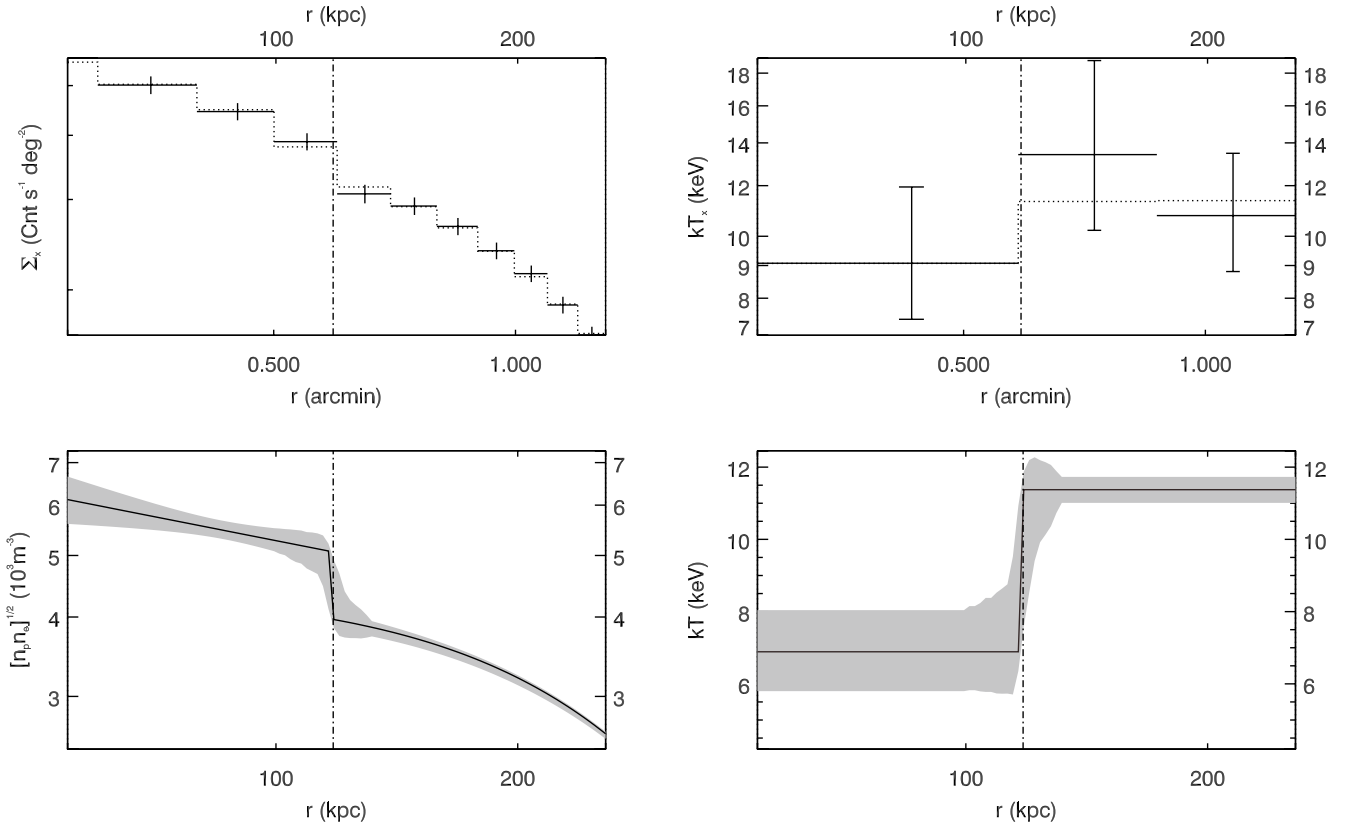


**Fig. 4.** A2163. *Left panels:* X-ray emission overlaid on galaxy maps. Optical observations performed at the MPI 2.2 m telescope, see Paper I (Maurogordato et al. 2008). X-ray images obtained from wavelet analyses of a *Chandra* exposure in the 0.5–2.0 keV band. *Top-left:* overall cluster emission. *Bottom-left:* high resolution analysis of the ICM emission near the cluster centre, see Sect. 3.3 for details. *Right panels:* ICM temperature maps obtained from wavelet spectral-imaging analysis of the EPIC-*XMM-Newton* data set. *Top-right:* black iso-contours from the *Chandra* image (same as top-left map). *Bottom-right:* black iso-contours from high resolution *Chandra* residue (same as bottom-left map); white iso-contours from projected galaxy density map (see also Fig. 6 in Paper I).

the origin of this soft excess is probably related to the location of A2163 near the North Polar Spur (NPS). For this reason, we decided to model the Galactic foreground emission by the sum of an unabsorbed thermal emission accounting for the local hot bubble (LHB,  $kT_{\text{LHB}} = 0.1$  keV, see e.g. Kuntz & Snowden 2000) and three absorbed thermal components accounting for the Galactic “transabsorption emission” (TAE,  $kT_1 = 0.099$  keV,  $kT_2 = 0.248$  keV, see Kuntz & Snowden 2000) and the NPS (see Fig. 2). In order to constrain this complex spectral model, we took advantage of the sky coverage provided by the four offset pointings available in the *XMM-Newton* archive (see Table 1)

and fitted the various background components to the X-ray emission from an external annulus ( $2700 < r < 4000$  kpc) where no cluster emission is expected to be detectable<sup>6</sup>. Modelling the spatial variations of Galactic  $N_{\text{H}}$  as detailed in Sect. 3.3.3, and fixing the temperature of the thermal components representing the galactic TAE and LHB enabled us to constrain the emissivity and temperature of the excess component. The temperature value obtained ( $kT_{\text{NPS}} \approx 0.3$  keV) is in agreement with expectations

<sup>6</sup> This radial range corresponds to a region located well beyond  $r_{200}$ , as estimated from optical measurements in Paper I.



**Fig. 5.** Top profiles: ICM brightness (*left*) and projected temperature (*right*) profiles corresponding to the sector illustrated in the *bottom-left* panel of Fig. 4. Bottom profiles: ICM density and 3D temperature modelled as disrupted distributions with common jump position (the dot-dashed line, see also Sect. 4.2 and Eqs. (6) and (7)). The ICM emissivity corresponding to these radial distribution has been fitted to the ICM brightness and projected temperature, as shown by dotted line on the top profiles.

for emission from the North Polar Spur (see e.g. Willingale et al. 2003).

## 4. ICM dynamics and merger events

### 4.1. Gas distribution and thermal structure of A2163

The *Chandra*-ACIS brightness map and iso-contours in the top left and right panels of Fig. 4 show us the complex and irregular morphology of the ICM in A2163. The map and contours reveal a main component (A2163-A) and a Northern subcluster (A2163-B), the main component itself appearing irregular with an eastern extension on a large scale and a triangular shape in the central region. The high resolution residue obtained from wavelet analysis of the *Chandra*-ACIS “soft” image – as detailed in Sect. 3.3 and shown in the bottom-left panel of Fig. 4 – enables us to resolve further details in the central region, and to separate a brightness peak located close to the brightest cluster galaxy (BCG1, see also Paper I) from a sharp-edged, wedge-shaped feature located to its west.

The *XMM-Newton* -EPIC temperature map in Fig. 4 shows the very hot mean temperature and anisotropic thermal structure of the ICM near the centre of the main cluster A2163-A, and also the colder temperature ( $kT \approx 6$  keV) of the Northern subcluster, A2163-B. The map exhibits in particular a hot region to the North of A2163-A ( $kT \approx 18$  keV) and a colder clump to the SouthWest ( $kT \approx 10$  keV). This overall thermal structure is consistent with former analyses of *Chandra* data by e.g. Govoni et al. (2004), Million & Allen (2009) or Owers et al. (2009), apart from slight morphological differences in the shape

and location of the hot region in our maps. This hot region is indeed spatially coincident with a prominence of Galactic IR emissivity, likely leading to a region of enhanced absorption (see Fig. 3). The better sensitivity of the *XMM-Newton* mosaic further enables us to detect a clear drop of the ICM temperature toward the outskirts of A2163-A ( $r > 700$  kpc).

### 4.2. A gas “bullet” crossing the main cluster atmosphere separately from galaxies

In the bottom-right panel of Fig. 4 we show the high resolution residue obtained from the *Chandra* analysis overlaid on the *XMM-Newton* -EPIC temperature map. Interestingly, we notice that the SouthWestern cold clump in A2163-A is associated with the wedge-like feature revealed from the *Chandra* data. The cold clump thus appears as a cool core embedded in the hotter ICM of A2163-A, that is delimited in the westward direction by a brightness edge.

In order to investigate 3D structure of this cool core, we extracted the brightness and temperature profiles corresponding to an ICM sector incorporating the brightness edge, as illustrated in the bottom-left panel of Fig. 4. As shown on Fig. 5, these two profiles have enabled us to model the ICM density  $\rho(r)$ , and 3D temperature  $T(r)$ , as two disrupted functions defined in Eqs. (8) and (9), with common jump location and amplitudes. The density and temperature jump amplitudes thus measured are  $D_n = \frac{n_1}{n_2} = 1.28^{+0.07}_{-0.06}$  and  $D_T = \frac{T_2}{T_1} = 1.65^{+0.21}_{-0.14}$ , respectively, where indices 1 and 2 refers to internal and external core regions. Consistent with continuous pressure at the jump location

( $D_p = D_n D_T = 1.29^{+0.20}_{-0.13}$ ), these jumps are likely to be associated with a cold front. This cold front has also been seen in the same data set by [Owers et al. \(2009\)](#), who measured a similar pressure jump to ours from analysis of a region corresponding to the Southern part of our sector where the density jump appears as more prominent in projection. By analogy with 1E0657-56 (the so-called “bullet-cluster”, [Markevitch et al. 2002](#)), the location of the cold front with respect to the wedge-shaped residual emission might indicate the westwards motion of a stripped cool core embedded in the hotter atmosphere of A2163-A.

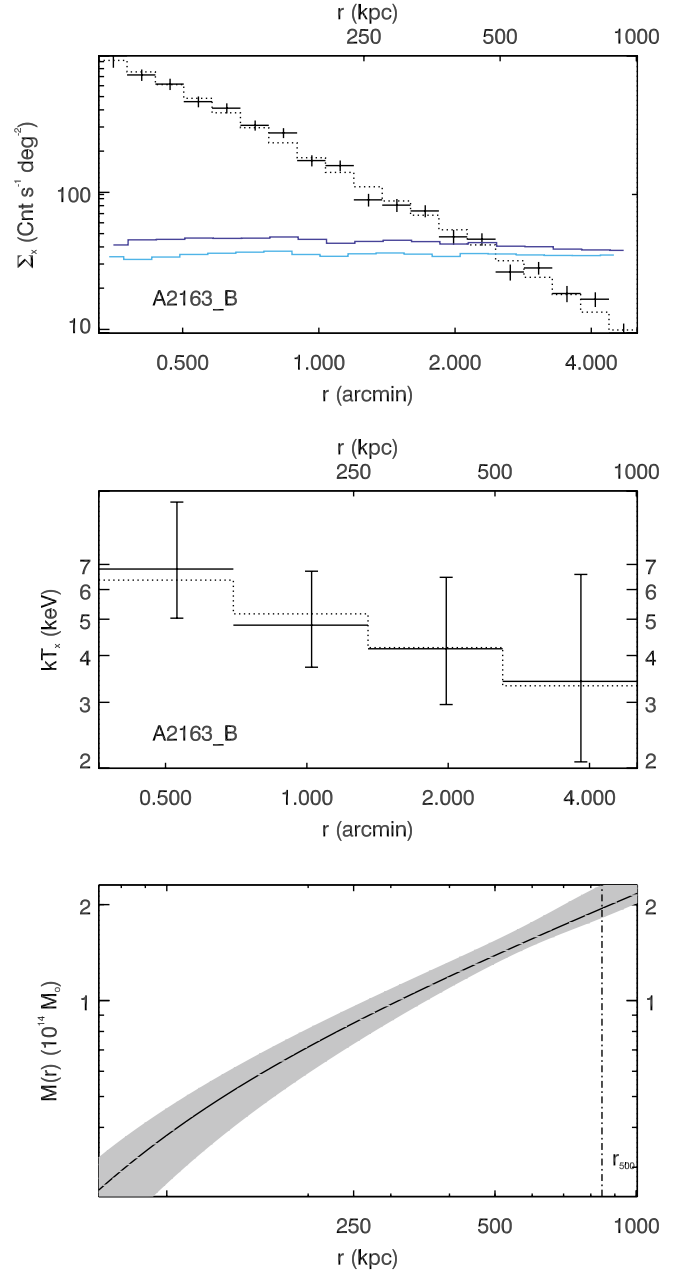
To try and constrain the history of a possible subcluster in-fall associated with this cool core, in the bottom-right panel of Fig. 4 we overlay the galaxy iso-density contours obtained from WFI data (Paper I) on the ICM temperature map of A2163. As discussed in Paper I, the galaxy iso-density contours map a complex, bimodal galaxy distribution in A2163-A. This bimodal distribution corresponds to an E-W elongation of the cluster dark matter halo, as revealed from weak lensing analysis of [Radovich et al. \(2008\)](#). Interestingly, we now observe that the less dense of the two galaxy subclusters in A2163-A is located near the cool core, but is separated from it at a projected distance of about 30 arcsec. Its location to the west of the cool core suggests a scenario in which a subcluster has crossed the A2163-A complex from east to west; the offset wedge-shaped residual emission then suggests subcluster gas loss due to ram pressure of the main cluster atmosphere, leading to its present separation from the constituent galaxies.

### 4.3. The subcluster A2163-B

#### 4.3.1. A2163-B. Gas properties and mass

Located at close projected distance ( $\approx 1.25$  Mpc) from the main cluster A2163-A, A2163-B appears in Fig. 4 as a small subcluster with regular morphology, hosting colder gas than A2163-A. Due to the small angular distance separating A2163-B from its bright companion, the X-ray emission from both A2163-A and A2163-B must be analysed simultaneously. We separated the two cluster emissions by modelling the emissivity from A2163-A in each energy band from profiles  $\rho(r)$  and  $T(r)$ , used to model its gas density and temperature structure in Sect. 6. To do so, a 2D  $\beta$ -model was first fitted to the surface brightness distribution of A2163-A, enabling us to derive ellipticity parameters and to correct the projected emissivity,  $\Sigma(d, e) = 2 \int_0^\infty \frac{\rho(r, T(r), e)}{\sqrt{r^2 - d^2}} r dr$ , for these parameters. In order to further reduce the contribution from A2163-A, the spectra from A2163-B have been extracted in a northern semi-sector centred on the subcluster emission peak and extending away from the main cluster emission.

This spectral component separation has enabled us to derive the residual brightness and temperature profiles of A2163-B. As shown in Fig. 6, the gas temperatures obtained are lower than expected from visual inspection of the temperature map of Fig. 4, since here the emission contribution from the main cluster has been removed. Fitting this data set with analytical density and temperature profiles has enabled us to derive a mass profile of A2163-B, assuming hydrostatic equilibrium. The cluster gas and total mass estimates derived from this analysis are  $M_{g,500} = 0.22^{+0.02}_{-0.03} \times 10^{14} M_\odot$  and  $M_{500} = 2.1 \pm 0.1 \times 10^{14} M_\odot$ , respectively, where confidence intervals have been obtained from random realisations of parameters in the fitted density and temperature profile of Eqs. (6) and (7).

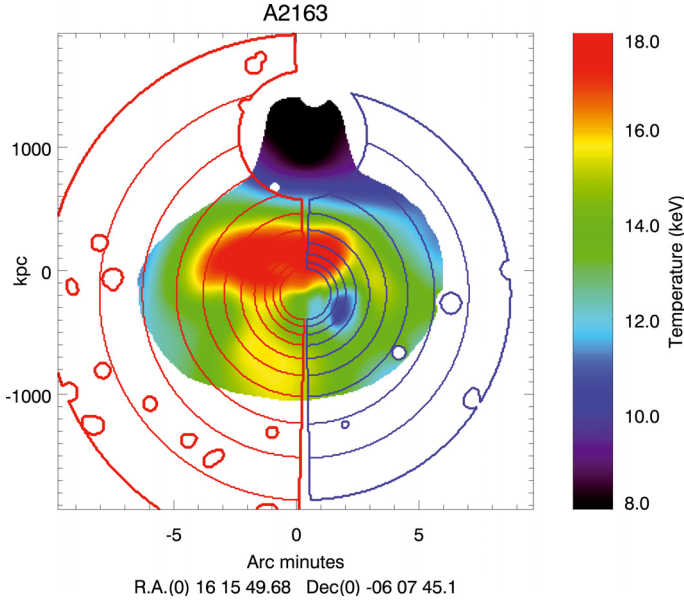


**Fig. 6.** A2163-B. *Top*: ICM surface brightness profile. Light blue: blank-sky background emissivity. Blue: blank-sky background and main cluster emissivity. *Middle*: projected ICM temperature profile. *Bottom*: mass profile modelled from the surface brightness and projected temperature profiles, assuming ICM hydrostatic equilibrium. The ICM surface brightness and projected temperature have been modelled analytically (see dotted lines on the corresponding plots).

#### 4.3.2. A2163-B. interaction with main cluster, A2163-A

Using galaxy velocity measurements from Paper I and applying the two-body formalism, we calculated a set of bounded solutions for the dynamics of the merger system A2163-A–A2163-B, with various separation distances including close solutions where both subclusters are almost observed in the sky plane, and more distant solutions where both clusters are observed as aligned along the line of sight (see Appendix for details). The ICM properties of A2163-B do not show any strong evidence of interaction with the main cluster atmosphere. In particular, the gas brightness and temperature maps in Fig. 4 do not exhibit





**Fig. 7.** A2163 gas temperature map with two complementary profile extraction regions overlaid. The blue region is expected to be located ahead of the moving cool core, while the red region is expected to be located behind. Both regions are centred on the X-ray emission peak.

any strong thermal or pressure enhancements in the direction of A2163-A within an over-density radius of  $r_{500}$ , in contrast with expectations of hydrodynamical  $N$ -body simulations of bimodal cluster mergers (see e.g. Ricker & Sarazin 2001). Moreover, the gas mass fraction in A2163-B is close to the value expected for an isolated system ( $f_{\text{gas},500} \simeq 0.1$ ). From the lack of any close interaction evidence with A2163-A, it is likely that A2163-B is physically separated from its companion at a distance larger than the radius,  $r_{500}$ , of the main cluster.

## 5. Merger effect on the gas pressure

The evidence for a gas “bullet” separated from its galaxies crossing the A2163 atmosphere suggests that the main cluster has recently accreted a subcluster along the East-West direction (see Sect. 4.2). In order to investigate the effects of this major merger event on the ICM thermodynamics, we extracted three sets of ICM brightness, temperature and pressure profiles corresponding to the eastern and western cluster sectors shown on Fig. 7, and to the overall cluster A2163-A.

### 5.1. Brightness and temperature profiles

Extracted from the *XMM-Newton* data set and shown on Fig. 8, the ICM brightness and projected temperature profiles have been centred on the eastern X-ray peak revealed on the *Chandra* high resolution map of Fig. 4, and located close to the cluster BCG1 as shown in Paper I. This choice has enabled us to centre the profiles near the expected cluster mass centre, while radially integrating the innermost gas brightness distribution along the X-ray isophotes. The maximum radius of the profiles has been roughly set to a distance where cluster reaches the “background noise” emissivity in the soft X-ray band. Due to the strong East-West asymmetry of the cluster atmosphere we are able to extract profiles up to larger radius on the eastern side.

We first observe that the shapes of the eastern and western brightness profiles differ strongly near the centre of A2163-A,

due to the asymmetry introduced by the crossing “bullet”. The two profiles cross each other at a radial distance of about 3.5 arcmin, beyond which the eastern brightness profile exceeds the western one. As expected, the overall cluster profile averages the radial brightness values corresponding to the eastern and western cluster sectors. Given the limited statistics available, the eastern and western temperature profiles show only marginal differences, most noticeably for the outermost radial bins and in the second radial bin intercepting the western cool core. Interestingly, we observe that the overall temperature profile seems to reflect the higher temperatures on the eastern cluster side, where the radial ICM emissivity is the highest.

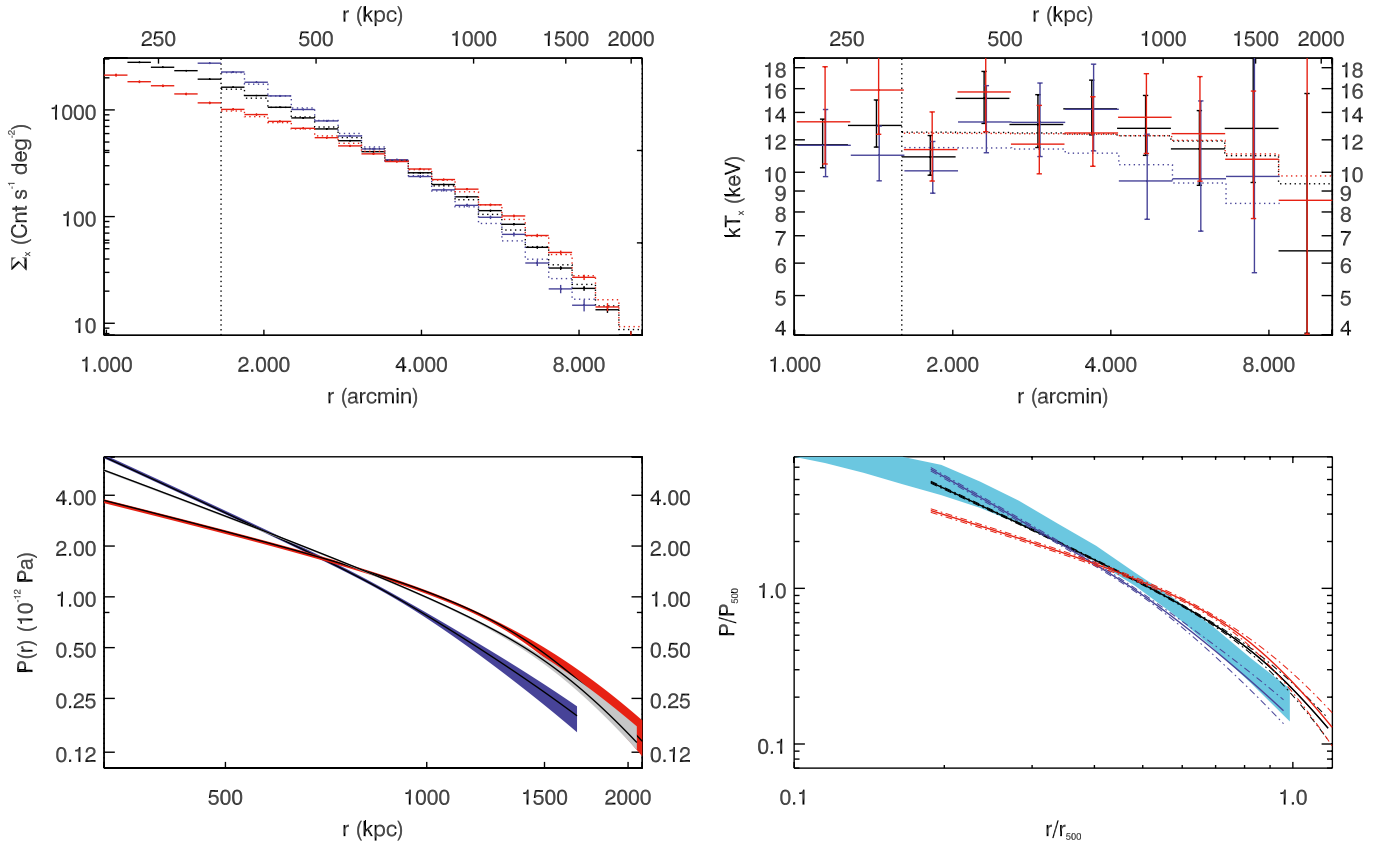
### 5.2. Pressure profiles

As shown in the bottom-left panel of Fig. 8, the ICM brightness and temperature profiles have been used to model three pressure profiles corresponding to the eastern, western and overall cluster outskirts ( $r \gtrsim 400$  kpc). The ICM density and 3D temperature profile have been modelled following parametric radial distribution functions – see Eqs. (6) and (7) –, and multiplied by each other to yield the pressure. As observed for the brightness profiles, the eastern and western pressure profiles differ clearly in the innermost region of A2163-A, then cross each other at a radial distance of about 800 kpc, above which the eastern profile has a higher pressure than the western profile by a factor  $\sim 2$ . This pressure excess may be related to ICM shock heating behind the crossing “bullet”, leading to an adiabatic compression of the gas. The overall cluster pressure profile seems to reflect the higher pressure values corresponding to the eastern cluster sector, so that the ongoing merger event is likely to have strongly disturbed the shape of the overall cluster pressure profile.

A recent analysis of a representative sample of nearby galaxy clusters (REXCESS, Böhringer et al. 2007) has shown that the ICM pressure is expected to follow an average profile with low dispersion partially related to the thermodynamical state of clusters (Arnaud et al. 2010, hereafter A10). In order to be compared with average cluster pressure profile of the REXCESS sample, the ICM pressure profiles of A2163-A have been rescaled to characteristic pressures  $P_{500}$  related to the cluster mass  $M_{500}$ , in the framework of self-similar cluster evolution models (see Eqs. (5) of (A10)). As detailed in the following section, the cluster mass we used for this scaling was estimated from the  $Y_X$  proxy. The bottom-right panel of Fig. 8 shows that the scaled profiles associated with the overall cluster and the western sector both follow the universal shape of the REXCESS cluster sample, while the scaled profile associated with the eastern sector appears shallower. Consistent with the discrepancy observed by A10 between relaxed and morphologically disturbed clusters in the REXCESS sample, this trend favours a scenario where the western side of A2163-A shows the pressure structure of a self-similar cluster, while the pressure structure in the eastern cluster side has been strongly disturbed by the ongoing merger event.

## 6. Mass measurements

The exceptionally high ICM temperature of A2163 and the evidence of an ongoing major merger event in its central region makes this cluster an interesting test case for cluster mass measurements. We first estimated the overall mass of A2163 from the  $Y_X$  mass proxy, then investigated the validity of the hydrostatic equilibrium assumption in the overall cluster and in specific cluster sectors.



**Fig. 8.** A2163-A profiles associated with the overall cluster (in black) and the eastern and western cluster sectors shown on Fig. 7 (in red and blue, respectively). *Top:* gas surface brightness (*left*) and projected temperature profiles (*right*). *Bottom left:* ICM pressure profiles modelled to fit surface brightness and projected temperature. *Bottom right:* ICM pressure profiles re-scaled to the characteristic pressure of a self-similar cluster with mass  $M_{500}$ . The distribution of scaled pressure profiles measured in a representative sample of nearby galaxy clusters (REXCESS, Arnaud et al. 2010) has been overlaid in light blue.

**Table 2.** A2163 gas and total mass estimates performed from  $Y_X$  mass proxy calibrated according to Arnaud et al. (2010), Vikhlinin et al. (2009), hydrostatic equilibrium assumption in the overall cluster ( $M_{500,HE}$ ), western ( $M_{500,HE,West}$ ) and eastern ( $M_{500,HE,East}$ ) cluster sectors of Fig. 7.

	$Y_X, XMM$ (Arnaud et al. 2010)	$Y_X, Chandra$ (Vikhlinin et al. 2009)	HE	HE, West	HE, East
$M_{500}(10^{14} M_{\odot})$	$18.7^{+2.0}_{-2.4}$	$20.4^{+2.9}_{-3.5}$	$24.7^{+0.5}_{-0.9}$	$14.5^{+0.6}_{-0.3}$	$26.5^{+1.9}_{-1.2}$
$M_{g,500}(10^{14} M_{\odot})$	$2.74 \pm .01$	$2.84 \pm .01$	$3.10^{+0.5}_{-0.9}$	$2.54^{+0.10}_{-0.05}$	$3.17^{+0.20}_{-0.13}$
$r_{500}(kpc)$	$1752^{+65}_{-72}$	$1805^{+88}_{-99}$	$1930^{+36}_{-70}$	$1601^{+61}_{-29}$	$1967^{+113}_{-72}$

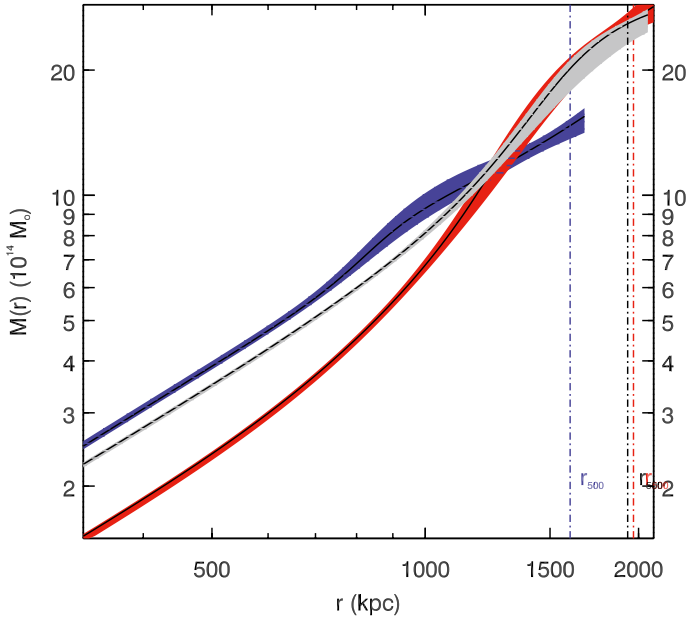
**Notes.** Confidence intervals in the  $Y_X$  mass estimates include measurements uncertainties on gas mass and temperatures, and systematic uncertainties on the  $Y_X - M_{500}$  scaling relations. Uncertainties on hydrostatic mass estimates have been obtained from random realisations of parameters in the fitted density and temperature profile of Eqs. (6) and (7).

### 6.1. Mass estimate from the $Y_X$ proxy

Defined as the product of gas mass  $M_{g,500}$  and average temperature  $kT$ , the  $Y_X$  parameter has been proposed by Kravtsov et al. (2006) as a robust proxy for the total cluster mass. Related to the ICM thermal energy, the parameter has shown a tight correlation with cluster mass in mock X-ray observations of clusters evolving in a cosmological context, regardless of their dynamical state.

We estimated the  $Y_X$  parameter in A2163 iteratively, yielding the total cluster mass  $M_{500}$ , radius  $r_{500}$ , gas mass  $M_{g,500}$ , and average temperature  $kT$ . We iterate about the  $Y_X - M_{500}$  scaling relation calibrated from hydrostatic mass estimates in a nearby cluster sample observed with *XMM-Newton* (A10), and compare with a similar relation obtained from *Chandra* data

(Vikhlinin et al. 2009, hereafter, V09). The gas masses  $M_{g,500}$  were computed by integrating the ICM density profile used to model gas pressure as detailed in the previous section, while average temperatures have been estimated within radii interval of  $[0.15-0.75] r_{500}$  and  $[0.15-1] r_{500}$ , following the  $Y_X - M_{500}$  relations of A10 and V09, respectively. As shown in Table 2, the two  $Y_X$  mass estimates obtained are consistent, with a lower estimate from *XMM-Newton* than from *Chandra* due to the difference in satellite calibrations. Our *XMM-Newton* cluster mass estimate from iteration about the V09 scaling relation is 7 per cent lower than that found by V09 using *Chandra* data. This mild difference is likely to be related to the lower average temperature estimate of the present *XMM-Newton* analysis, possibly due residual instrument cross-calibrations issues and small differences in Galactic absorption modelling.



**Fig. 9.** A2163-A mass profiles computed assuming ICM hydrostatic equilibrium. Profiles in the overall cluster region (in black), and the eastern and western cluster sectors illustrated in Fig. 7 (in red and blue, respectively) are shown. The profiles have been derived from analytical ICM density and temperature distributions fitted to the projected gas brightness and temperature profiles of Fig. 8.

### 6.2. Mass estimates assuming ICM hydrostatic equilibrium

Assuming hydrostatic equilibrium, the ICM density and temperature profiles used to model gas pressure have been used to derive the integrated cluster mass profile, shown as a grey shaded area in Fig. 9. As for the pressure measurements, this profile has been centred on the eastern X-ray peak of the *Chandra* map and estimated in the radius range 450–2100 kpc, excluding the central region and the crossing “bullet”. As shown in Table 2, the total cluster mass estimate  $M_{500}$  obtained from this profile is inconsistent with the estimates obtained from the two *XMM-Newton* and *Chandra*  $Y_X$  proxies (27 per cent and 19 per cent higher, respectively), possibly due to a departure of the ICM from hydrostatic equilibrium.

To investigate the origins of this inconsistency, we derive two additional integrated cluster mass profiles using the density and temperature profiles from the eastern and western cluster sectors shown in Fig. 7, again using analytical models and assuming ICM hydrostatic equilibrium. As shown in Fig. 9, the eastern and western cluster mass profiles significantly differ in shape. We observe that the western profile has a higher integrated mass than the eastern profile near the cluster centre but then flattens at larger radius, leading to a lower integrated mass estimate in the cluster outskirts. Similar to pressure profiles in Fig. 8, we further observe that the overall cluster mass profile appears to reflect the mass in the eastern cluster side. A2163 being a complex cluster system, we cannot exclude the inconsistency between eastern and western profiles to reflect a true anisotropy in the cluster mass distribution. The hypothesis of a strong mass excess beyond 1000 kpc in the eastern cluster side is however difficult to reconcile with the lack of any observational evidence for prominent galaxy or dark matter over-density in this cluster region – see Paper I and Radovich et al. (2008)–. The inconsistency observed between eastern and western profiles may instead

show us that the shock heating of the cluster ICM induced by the accretion may not only have adiabatically compressed the eastern cluster atmosphere, but also transiently taken gas away from hydrostatic equilibrium in this region. For this reason, the cluster mass estimates assuming hydrostatic equilibrium in this region reported in Table 2 and hence in the overall cluster are likely to be overestimated. Assuming hydrostatic equilibrium in the western cluster side might instead provide with us an estimate of the cluster mass before the ongoing merger event,  $M_{500,HE,West} = 1.5 \times 10^{15} M_{\odot}$ , while the subcluster accretion might have raised the total cluster mass up to values provided by the  $Y_X$  proxy:  $M_{500,Y_X} \approx 1.9 \times 10^{15} M_{\odot}$ .

## 7. Discussion and conclusions

The A2163 system has been known to host a massive and elongated galaxy-cluster, A2163-A, and a smaller associated subcluster, A2163-B. We provided new mass measurements of the two companion subclusters, and estimate that with a mass of about  $M_{500} \approx 2.1 \times 10^{14} M_{\odot}$ , A2163-B is ten times less massive than its extended companion. As the ICM properties of A2163-B do not show any strong evidence of interaction with A2163-A, the two subclusters A2163-A are likely to be physically separated at a distance larger than main cluster radius ( $r_{500} \approx 2$  Mpc). Since the two subclusters were suggested in Paper I to be connected by a galaxy bridge, they might form a bounded system observed along the line of sight, consistent with large separation solutions in the two-body dynamical analysis detailed in Appendix.

From evidence of a stripped cool core crossing the main cluster atmosphere separately from a nearby galaxy over-density, we infer that A2163 might have recently accreted a subcluster along its East-West elongation. We suggest that this merger event has shocked the main-cluster atmosphere, and adiabatically compressed the ICM behind the crossing cool core. This indication of shock heating and the evidence of a galaxy-gas separation lead us to infer that the subcluster has been accreted to a supersonic velocity. Shock heating may further have transiently pulled cluster gas away from hydrostatic equilibrium, leading to large uncertainties on the cluster mass estimate from X-ray analysis. Assuming the  $Y_X$  proxy to indicate the mass of the overall system A2163 and the western cluster sector to represent the ICM in hydrostatic equilibrium before subcluster accretion, we may infer a merger scenario between two subunits of mass ratio 1:4, leading to the present system with mass  $M_{500} \approx 1.9 \times 10^{15} M_{\odot}$ .

A fast subcluster accretion with evidence of galaxy-gas separation was first seen in 1E 0657-56, the so-called “bullet cluster” by Markevitch et al. (2002). It is interesting to note that both 1E 0657-56 and A2163 are exceptionally massive, favouring ram pressure stripping of the gas content of an incoming subcluster due both to the high density of these accreting cluster atmospheres, and by exceptionally high collision velocities assuming free fall encounters. It is thus likely that the comparable mass of A2163 and 1E 0657-56 has favoured similar merger scenarios. Moreover, both 1E 0657-56 and A2163 exhibit similar global properties such as exceptionally high luminosity and gas temperature (about 15 and 12 keV for 1E 0657-56 and A2163, respectively), and powerful emission from an extended radio halo. These common properties are likely point to the recent dissipation of a large amount of kinetic energy through shock heating and turbulence.

While presenting striking similarities related to a similar “bullet” accretion scheme, A2163 and 1E 0657-56 show different morphologies that may point to some small differences

between time scales and the initial conditions of the accretion process. The crossing “bullet” is observed at a larger projected cluster radius in the case of 1E 0657-56 (500 kpc vs. 290 kpc as for 1E 0657-56 and A2163, respectively), and is thus better separated from the dense emission of the main cluster. Assuming both “bullet” motions to be roughly orthogonal to the line of sight, the projected distances would represent physical distances to the cluster core, and the “bullet” would be observed at an earlier point in its crossing of the main cluster in the case of A2163. Unlike for the 1E 0657-56 “bullet”, however, the A2163 “bullet” does not seem to be preceded by a clear shock front. This non detection might be the result of a less favourable merger geometry, with a larger angle separating the A2163 collision axis from the sky plane. As discussed in Paper I, the galaxy velocity distribution in the main cluster indeed shows a strong velocity gradient of  $\sim 1250 \text{ km s}^{-1}$  along a NE/SW axis, which is much higher than the velocity offset of  $\sim 600 \text{ km s}^{-1}$  separating the two galaxy components of 1E 0657-56 (Barrena et al. 2002).

As extensively studied in the textbook case of the “bullet cluster”, observing a high-velocity subcluster accretion within a massive cluster may provide interesting constraints on ICM physics, galaxy evolution, and dark matter properties. Better constraints on the dynamics of the exceptional merger event in A2163 would thus be obtained from deeper X-ray or SZ observations, allowing us e.g. to constrain the “bullet” velocities from precise pressure measurements at the cold front stagnation point, or to look for a shock front ahead of the “bullet” direction of motion. Moreover, the present observations might be compared to a high resolution weak lensing analyses, enabling us to verify if the bimodality of the galaxy distribution seen in Paper I reflects the underlying dark matter morphology, and whether the galaxy-gas separation presently observed also corresponds to a segregation between the baryonic and dark matter content of the accreted subcluster.

*Acknowledgements.* We thank the referee for constructive remarks that have helped us to improve our manuscript. H.B. and P.M. acknowledge financial support from contracts ASI-INAF I/088/06/0, NASA GO8-9126A and GO9-0145A. C.F. acknowledges financial support by the Agence Nationale de la Recherche through grant ANR-09-JCJC-0001-01. This work is based on observations obtained with *XMM-Newton*, an ESA science mission funded by ESA Member States and the USA (NASA).

## Appendix A: Two-body analysis of A2163A/A2163B

We applied the two-body formalism (Beers et al. 1982) to the system composed of A2163-A (main) and A2163-B (Northern subcluster). In this method, the two components are supposed to be coincident at  $t = 0$  and are moving apart or coming together for the first time in their history. In this framework, one can write the parametric solutions to the equations of motion, relating the elapsed time  $t$ , the separation  $R$  and the velocity  $V$  of the two components to the total mass of the system  $M$ , the development angle  $\chi$ , and the maximum expansion radius in the bound case (the asymptotic expansion velocity  $V_\infty$ , in the unbound case). In the case of bound radial orbits:

$$R = \frac{R_m}{2} (1 - \cos \chi) \quad (\text{A.1})$$

$$t = \left( \frac{R_m^3}{8 \text{ GM}} \right)^{1/2} (\chi - \sin \chi) \quad (\text{A.2})$$

$$V = \left( \frac{2 \text{ GM}}{R_m} \right)^{1/2} \frac{\sin \chi}{(1 - \cos \chi)}. \quad (\text{A.3})$$

**Table A.1.** Solutions of the two body model for the A2163-A–A2163-B system, for the three cases considered: before first approach (10 Gyr), 0.5 Gyr and 1.0 Gyr after first approach.

$t$	Solution	$\alpha(\text{deg})$	$R(\text{Mpc})$	$R_m(\text{Mpc})$	$V(\text{km s}^{-1})$
10 Gyr	BIa	2.83	1.25	6.5	4050
	BIb	82	9.1	9.3	200
	BO	84	11.4	11.6	200
0.5 Gyr	BO	33	1.49	1.5	370
1.0 Gyr	BIa	5.4	1.25	1.5	2100
	BIb	52.6	2.06	2.07	250
	BO	57.6	2.33	2.34	240

**Notes.** For each solution, the angle  $\alpha$  between the line connecting the two components and the plane of the sky  $\alpha$ , the spatial separation of the subclusters  $R$ , their separation at maximum expansion  $R_m$  and their relative velocity  $V$  are determined.

In the unbound case:

$$R = \frac{\text{GM}}{V_\infty^2} (\cosh \chi - 1) \quad (\text{A.4})$$

$$t = \frac{\text{GM}}{V_\infty^3} (\sinh \chi - \chi) \quad (\text{A.5})$$

$$V = V_\infty \frac{\sinh \chi}{(\cosh \chi - 1)}. \quad (\text{A.6})$$

The velocity and spatial separation are directly related to the observed line of sight velocity difference  $V_r$  and projected separation  $R_p$  by:

$$R = \frac{R_p}{\cos \alpha}; V = \frac{V_r}{\sin \alpha} \quad (\text{A.7})$$

where  $\alpha$  is the angle between the axis joining the two units and the plane of the sky. When the two units are bound together, the system fulfils the Newton criterion:

$$V_r^2 R_p \leq 2 \text{ GM} \sin^2 \alpha \cos \alpha. \quad (\text{A.8})$$

Specifying the angular separation, the velocity offset of the two systems, and the time, one can close the system and derive the evolution of the angle  $\alpha$  as a function of these observed values and the development angle  $\chi$  (Owers et al. 2009). This leads in the bound case to:

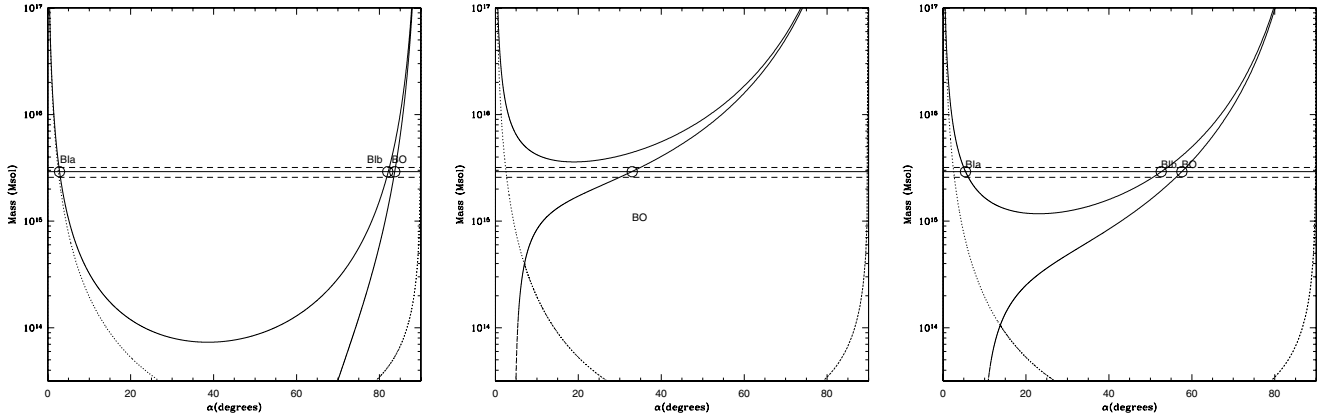
$$\tan \alpha = \frac{V_r t}{R_p} \frac{(1 - \cos \chi)^2}{\sin \chi (\chi - \sin \chi)} \quad (\text{A.9})$$

and similarly in the unbound case to:

$$\tan \alpha = \frac{V_r t}{R_p} \frac{(\cosh \chi - 1)^2}{\sinh \chi (\sinh \chi - \chi)}. \quad (\text{A.10})$$

These equations can be used in both cases to derive the total virial mass of the system as a function of the projection angle  $\alpha$  with respect to the plane of the sky. Comparing to the current estimates of the mass will allow us to assess which solutions are acceptable (Barrena et al. 2002).

We have taken  $R_p = 1.25 \text{ Mpc}$  and  $V_r = 200 \text{ km s}^{-1}$  (from Paper I), and set  $t$  to 10 Gyr (the age of the universe at  $z = 0.2$ ). We used the mass limits by summing mass estimates of the two components A2163-A and A2163-B as measured in the present



**Fig. A.1.** The sum of the virial masses of A2163-A and A2163-B as a function of the projection angle. The horizontal lines show the cluster mass estimate (full line) and errors (dashed lines) obtained in the present paper. The projected distance of 1.25 Mpc and radial velocity difference of 200 km s<sup>-1</sup> are derived from Maurogordato et al. (2008). The two systems were at zero separation 10 Gyr ago (*left panel*), 0.5 Gyr ago (*middle panel*), and 1.0 Gyr ago (*right panel*). The dotted curve corresponds to the Newtonian criterion for gravitational binding. Bound solutions are above this plot.

paper and assuming  $M_{200} = 1.4 M_{500}$ . Figure A.1 shows that in the pre-merger hypothesis, three bound solutions do exist: two bound incoming and one bound outgoing solutions (see Table A.1). The unbound solutions are excluded.

We have also investigated the possibility that the first encounter between both systems has already occurred, making several trials from  $t = 0.1$  Gyr to 1 Gyr. Recent encounters ( $t < 0.2$  Gyr) are not compatible with the system being bound. Taking  $t = 0.5$  Gyr after the presumed encounter, the only possible solution is the bound outgoing solution. For higher values of  $t$ , one finds again three bound solutions (two incoming and one outgoing).

## References

- Arnaud, M., Hughes, J. P., Forman, W., et al. 1992, *ApJ*, 390, 345  
Arnaud, M., Pratt, G. W., Piffaretti, R., et al. 2010, *A&A*, 517, A92  
Balucinska-Church, M., & McCammon, D. 1992, *ApJ*, 400, 699  
Barrena, R., Biviano, A., Ramella, M., Falco, E. E., & Seitz, S. 2002, *A&A*, 386, 816  
Beers, T. C., Geller, M. J., & Huchra, J. P. 1982, *ApJ*, 257, 23  
Bijaoui, A., & Rue 1995, *Signal Processing*, 46, 345  
Böhringer, H., Schuecker, P., Pratt, G. W., et al. 2007, *A&A*, 469, 363  
Boulanger, F., & Perault, M. 1988, *ApJ*, 330, 964  
Boulanger, F., Abergel, A., Bernard, J.-P., et al. 1996, *A&A*, 312, 256  
Bourdin, H., & Mazzotta, P. 2008, *A&A*, 479, 307  
Bourdin, H., Sauvageot, J.-L., Slezak, E., Bijaoui, A., & Teyssier, R. 2004, *A&A*, 414, 429  
Cypriano, E. S., Sodr , Jr., L., Kneib, J., & Campusano, L. E. 2004, *ApJ*, 613, 95  
Dame, T. M., Hartmann, D., & Thaddeus, P. 2001, *ApJ*, 547, 792  
Desert, F. X., Bazell, D., & Boulanger, F. 1988, *ApJ*, 334, 815  
Elbaz, D., Arnaud, M., & Boehringer, H. 1995, *A&A*, 293, 337  
Feretti, L., Fusco-Femiano, R., Giovannini, G., & Govoni, F. 2001, *A&A*, 373, 106  
Feretti, L., Orr , E., Brunetti, G., et al. 2004, *A&A*, 423, 111  
Govoni, F., Markevitch, M., Vikhlinin, A., et al. 2004, *ApJ*, 605, 695  
Grevesse, N., & Sauval, A. J. 1998, *Space Sci. Rev.*, 85, 161  
Holschneider, M., Kronland-Martinet, R., Morlet, J., & Grossmann, A. 1989, in *Wavelets, Time-Frequency Methods and Phase Space*, ed. J. M. Combes, A. Grossmann, & P. Tchamitchian (Springer-Verlag), 286  
Holzapfel, W. L., Arnaud, M., Ade, P. A. R., et al. 1997, *ApJ*, 480, 449  
Kalberla, P. M. W., Burton, W. B., Hartmann, D., et al. 2005, *A&A*, 440, 775  
Kowalski, M. P., Cruddace, R. G., Wood, K. S., & Ulmer, M. P. 1984, *ApJS*, 56, 403  
Kravtsov, A. V., Vikhlinin, A., & Nagai, D. 2006, *ApJ*, 650, 128  
Kuntz, K. D., & Snowden, S. L. 2000, *ApJ*, 543, 195  
Lamarre, J. M., Giard, M., Pointecouteau, E., et al. 1998, *ApJ*, 507, L5  
Lumb, D. H., Warwick, R. S., Page, M., & De Luca, A. 2002, *A&A*, 389, 93  
Markevitch, M., & Vikhlinin, A. 2001, *ApJ*, 563, 95  
Markevitch, M., Yamashita, K., Furuzawa, A., & Tawara, Y. 1994, *ApJ*, 436, L71  
Markevitch, M., Mushotzky, R., Inoue, H., et al. 1996, *ApJ*, 456, 437  
Markevitch, M., Gonzalez, A. H., David, L., et al. 2002, *ApJ*, 567, L27  
Maurogordato, S., Cappi, A., Ferrari, C., et al. 2008, *A&A*, 481, 593  
Million, E. T., & Allen, S. W. 2009, *MNRAS*, 399, 1307  
Miville-Desch nes, M., & Lagache, G. 2005, *ApJS*, 157, 302  
Nord, M., Basu, K., Pacaud, F., et al. 2009, *A&A*, 506, 623  
Owers, M. S., Nulsen, P. E. J., Couch, W. J., & Markevitch, M. 2009, *ApJ*, 704, 1349  
Pratt, G. W., Arnaud, M., & Aghanim, N. 2001, in *Clusters of Galaxies and the High Redshift Universe Observed in X-rays*, ed. D. M. Neumann, & J. T. V. Tran [arXiv:astro-ph/0105431]  
Radovich, M., Puddu, E., Romano, A., Grado, A., & Getman, F. 2008, *A&A*, 487, 55  
Rephaeli, Y., Gruber, D., & Arieli, Y. 2006, *ApJ*, 649, 673  
Ricker, P. M., & Sarazin, C. L. 2001, *ApJ*, 561, 621  
Shensa, M. J. 1992, *IEEE Trans. Signal Process.*, 40, 2464  
Smith, R. K., Brickhouse, N. S., Liedahl, D. A., & Raymond, J. C. 2001, *ApJ*, 556, L91  
Snowden, S. L., Egger, R., Finkbeiner, D. P., Freyberg, M. J., & Plucinsky, P. P. 1998, *ApJ*, 493, 715  
Squires, G., Neumann, D. M., Kaiser, N., et al. 1997, *ApJ*, 482, 648  
Starck, J.-L., & Pierre, M. 1998, *A&AS*, 128, 397  
Vikhlinin, A., Kravtsov, A., Forman, W., et al. 2006, *ApJ*, 640, 691  
Vikhlinin, A., Burenin, R. A., Ebeling, H., et al. 2009, *ApJ*, 692, 1033  
Wilbanks, T. M., Ade, P. A. R., Fischer, M. L., Holzapfel, W. L., & Lange, A. E. 1994, *ApJ*, 427, L75  
Willingale, R., Hands, A. D. P., Warwick, R. S., Snowden, S. L., & Burrows, D. N. 2003, *MNRAS*, 343, 995