

LETTER TO THE EDITOR

Hard X-ray flares in IGR J08408–4503 unveil clumpy stellar winds

J.-C. Leyder^{1,2,*}, R. Walter^{2,3}, M. Lazos^{2,4}, N. Masetti⁵, and N. Produit^{2,3}

¹ Institut d’Astrophysique et de Géophysique, Université de Liège, Allée du 6-Août 17, Bâtiment B5c, 4000 Liège, Belgium
e-mail: leyder@astro.ulg.ac.be

² *INTEGRAL* Science Data Centre, Université de Genève, Chemin d’Écogia 16, 1290 Versoix, Switzerland

³ Observatoire de Genève, Université de Genève, Chemin des Maillettes 51, 1290 Sauverny, Switzerland

⁴ Centro de Astrofísica da Universidade do Porto, Rua das Estrelas, 4150-762 Porto, Portugal

⁵ INAF – Istituto di Astrofisica Spaziale e Fisica Cosmica di Bologna, via Gobetti 101, 40129 Bologna, Italy (formerly IASF/CNR, Bologna)

Received 29 August 2006 / Accepted 14 February 2007

ABSTRACT

Context. A 1000-s flare from a new hard X-ray transient, IGR J08408–4503, was observed by *INTEGRAL* on May 15, 2006 during the real-time routine monitoring of IBIS/ISGRI images performed at the *INTEGRAL* Science Data Centre. The flare, detected during a single one-hour long pointing, peaked at 250 mCrab in the 20–40 keV energy range.

Aims. Multi-wavelength observations, combining high-energy and optical data, were used to unveil the nature of IGR J08408–4503.

Methods. A search in all *INTEGRAL* public data for other bursts from IGR J08408–4503 was performed, and the detailed analysis of another major flare is presented. The results of two *Swift* Target of Opportunity observations are also described. Finally, a study of the likely optical counterpart, HD 74194, is provided.

Results. IGR J08408–4503 is very likely a supergiant fast X-ray transient (SFXT) system. The system parameters indicate that the X-ray flares are probably related to the accretion of wind clumps on a compact object orbiting about 10^{13} cm from the supergiant HD 74194. The clump mass loss rate is of the order of $10^{-6} M_{\odot} \text{ yr}^{-1}$.

Conclusions. Hard X-ray flares from SFXTs allow to probe the stellar winds of massive stars, and could possibly be associated with wind perturbations due to line-driven instabilities.

Key words. gamma rays: observations – stars: supergiants – X-rays: individuals: IGR J08408–4503

1. Introduction

A new hard X-ray transient, IGR J08408–4503, was discovered by *INTEGRAL* on May 15, 2006 during the real-time routine monitoring of IBIS/ISGRI 20–40 keV images performed at the *INTEGRAL* Science Data Centre (ISDC). It was detected during a one-hour long pointing, and further analysis of the lightcurve with a 100-s binning showed that the source flared for ~ 1000 s starting at 2006-05-15T18:25:33, with a peak flux of 250 mCrab in the 20–40 keV energy range (Götz et al. 2006). The source was also detected by the JEM-X instrument, providing a position of: RA(J2000) = $08^{\text{h}}40^{\text{m}}48^{\text{s}}.7$, Dec(J2000) = $-45^{\circ}03'41''$ ($\pm 46''$ at 90% confidence) (Brandt et al. 2006).

Analysis of the public *INTEGRAL* archive shows that there was at least another outburst from this source on July 1, 2003 (Mereghetti et al. 2006). A detailed analysis of this first flare is presented in Sect. 2.1.

A first *Swift* target of opportunity observation was carried out on IGR J08408–4503 on May 22, 2006 (Kennea & Campana 2006). The XRT observation (in photon counting mode) revealed the presence of a faint source in the JEM-X error box at the position: RA(J2000) = $08^{\text{h}}40^{\text{m}}48^{\text{s}}$, Dec(J2000) = $-45^{\circ}03'30''$ (with an error radius of $5''.4$ at 90% confidence). Section 2.2 gives more details about this observation and a following one.

Preliminary studies of ESO archival optical spectra of the star HD 74194, which is lying at the *Swift*/XRT position, were

performed by Masetti et al. (2006), who pointed out that this star is likely associated with IGR J08408–4503, on the basis of the detection of H α in emission. A deeper analysis of these results is presented in Sect. 3.

Finally, Sect. 4 provides a discussion on the nature of this new source, and derives likely system parameters based on the observations.

2. The high-energy source

2.1. *INTEGRAL* observations

All available public *INTEGRAL* (Winkler et al. 2003) pointings less than 10° away from the source position were analysed to look for other flares from the source. There are two major periods during which the source was frequently observed, summarized in Table 1. The data were analyzed using OSA¹, version 5.1. A lightcurve at the source position was extracted, with a binning of 100 s.

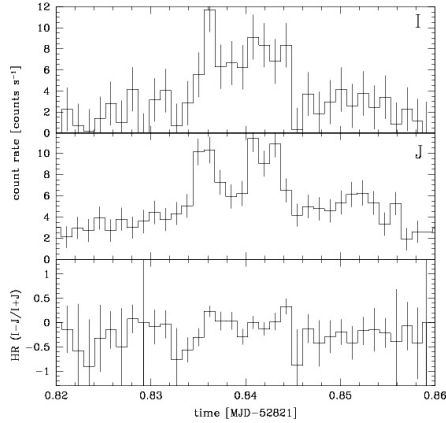
The detailed study of this lightcurve showed that there is only one significant flare, around 2003-07-01T20:03:02. A zoom on the ISGRI and JEM-X lightcurves around this flare is shown in Fig. 1, together with the hardness ratio. The source was significantly detected with ISGRI for 12.6 ks with a maximum flux reaching 11.7 counts s^{-1} in the 20–60 keV energy band

¹ The offline scientific analysis (OSA) software is available from the ISDC website: <http://isdc.unige.ch>.

* FNRS Research Fellow.

Table 1. Summary of the main *INTEGRAL* public data available for IGR J08408–4503.

Rev.	Period [MJD]	Date
81–88	52 803–52 827	12 Jun.–6 Jul. 2003
137–141	52 970–52 984	27 Nov.–11 Dec. 2003

**Fig. 1.** ISGRI (*I*, 20–60 keV) and JEM-X (*J*, 3–35 keV) lightcurves around the flare of IGR J08408–4503 (with a 100 s binning), and hardness ratio $(I - J)/(I + J)$.

in the 100-s bin centered around 2003-07-01T20:03:02.552 (in pointing **00870035**). Meanwhile, the JEM-X flux peaked at 11.4 counts s⁻¹ in the 3–35 keV energy band.

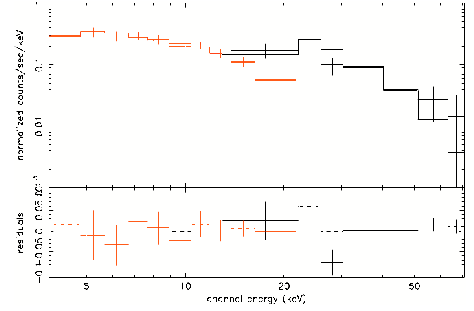
The peak 2–10 keV X-ray flux could be estimated as 1.1×10^{-9} erg s⁻¹ cm⁻², assuming the spectral model described below (*wabs*comptt*). The average flux during the 1000-s flare is 7×10^{-10} erg s⁻¹ cm⁻².

Mosaicking 6 pointings surrounding the main flare (3 before and 3 after, i.e. excluding the pointing with the flare itself) shows that IGR J08408–4503 is also clearly detected around the main flare, from 2003-07-01T16:40:00 until 23:35:13.

A mosaic of all pointing images containing the source (except 8 pointings surrounding the flare) was produced and gave a 5- σ upper limit for the flux in quiescence of 0.056 counts s⁻¹ in the 23–40 keV energy range, for an effective exposure time of 2.45 Ms. The 2–10 keV upper limit can be estimated as 6×10^{-12} erg s⁻¹ cm⁻².

The JEM-X and ISGRI average spectra of IGR J08408–4503 were extracted from the pointing containing the flare, and are shown in Fig. 2. The spectrum was fitted² with *xspec* using a simple absorbed *powerlaw*, but no good fit could be obtained with $\chi^2_\nu \approx 1.7$ (for 13 degrees of freedom). Then, two models exhibiting a spectral break were used: a broken *powerlaw* (*bknpower*) and a *comptt* model (*comptt*). Both models give much better results, with the χ^2_ν for the *comptt* model decreasing to 1.0 (for 12 degrees of freedom). Applying an F-test shows that there is a 99.3% probability that the *comptt* model is better than the simple *powerlaw*, implying that a spectral break is needed. The *bknpower* model suggests a break at an energy of 14.8 ± 3.4 keV. The *comptt* model gives a plasma temperature kT of 7 ± 1 keV, and a plasma optical depth τ_{plasma} of 4 ± 1 . The intercalibration constant between ISGRI and JEM-X is 1.2 ± 0.3 in the case of the *powerlaw* model, and 1.3 ± 0.3 for the *comptt* model.

² For all fits, a constant is added to allow for normalisation between JEM-X and ISGRI, and a *wabs* is added to take into account the hydrogen column, N_{H} .

**Fig. 2.** JEM-X and ISGRI spectra of IGR J08408–4503 (for pointing 35 only), fitted with a constant *wabs*comptt* model.

Only an upper limit on the value of the hydrogen column N_{H} can be obtained: the 2- σ upper limit on N_{H} is 3×10^{23} cm⁻².

2.2. *Swift*/XRT observations

Two *Swift* (Gehrels et al. 2004) Target of Opportunity observations of IGR J08408–4503 were performed: they consisted of a nominal 3.6 and 4.0 ks exposure in photon counting mode starting at 2006-05-22T10:41:01 and at 2006-07-29T00:15:00. The data were analysed with version 2.3 of the *Swift* software³.

The best position for IGR J08408–4503 (derived from the second observation) is: RA(J2000) = 08^h40^m47^s, Dec(J2000) = -45°03'32" (with an uncertainty of 4'1 at 90% confidence level), consistent with the results of Kennea & Campana (2006).

The source is very faint, with only 22 counts in total (resp. 20 for the second observation), and 18.3 ± 4.7 counts after background subtraction (resp. 18.4 ± 4.5). Assuming the spectral model derived from *INTEGRAL* (*wabs*comptt*), the flux measured by *Swift* can be estimated as 3.4×10^{-13} erg s⁻¹ cm⁻² in the 2–10 keV energy band (resp. 3.1×10^{-13}). However, this model is not compatible with the fact that all (but one) events detected by *Swift* have an energy smaller than 1.5 keV. Assuming a soft thermal model, one finds that these 22 counts are compatible with a 0.5–2 keV flux of 9.4×10^{-14} erg s⁻¹ cm⁻².

3. Optical counterpart

3.1. Imaging

A DSS-II red image of the field is shown in Fig. 3. In the 2MASS catalogue, there is only one star in the *Swift* error circle: HD 74194, which has a position of: RA(J2000) = 08^h40^m47^s.79, Dec(J2000) = -45°03'30".2. The next closest source is nearly 10" away from IGR J08408–4503. However, HD 74194 is so bright that we cannot exclude the presence of other faint sources in the error circle. Therefore, we cannot conclusively associate IGR J08408–4503 with HD 74194 by positional arguments alone.

3.2. Spectroscopy

Spectroscopy of the star HD 74194 was secured under programme 70.C-0396(A) on January 9, 2003 at the ESO 3.6 m telescope equipped with EFOSC, which uses a (2 × 2 binned) 2060 × 2060 pixel Loral/Lesser CCD. Two 5-s spectra were acquired starting at 08:38:39 UT; grism #12 and a slit width

³ The *Swift* software is available from the GSFC website: <http://swift.gsfc.nasa.gov/>.

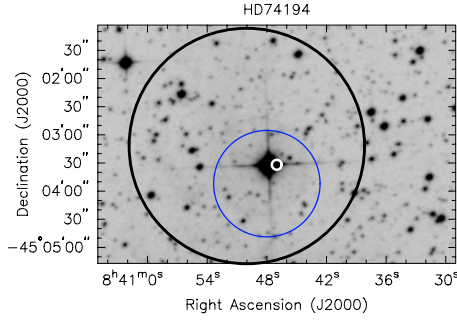


Fig. 3. DSS-II-Red optical image of the field of IGR J08408–4503. The outer black and middle blue circles indicate respectively the *INTEGRAL* ISGRI and JEM-X error circles, and the innermost white circle indicates the *Swift* XRT position. The star HD 74194 matches perfectly. The field size is $5.8' \times 3.7'$; North is up and East to the left.

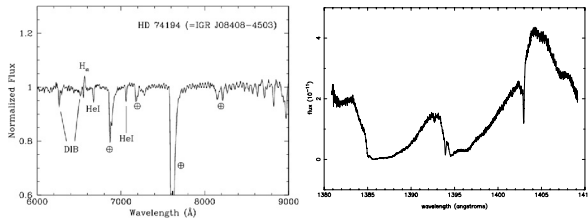


Fig. 4. *Left:* combined 6000–9000 Å spectrum of the star HD 74194, acquired with the 3.6 m ESO telescope. The main spectral features are labeled. The symbol \oplus indicates atmospheric telluric absorption bands. *Right:* *HST*/GHRS 1380–1410 Å spectrum of HD 74194, showing the Si IV and O IV lines (dataset Z37J020DT).

of $1''$ were used, providing a 6000–10 000 Å nominal spectral coverage. The use of this setup guaranteed a final dispersion of 4.2 \AA/pix .

After cosmic-ray rejection, the spectra were reduced, background subtracted and optimally extracted (Horne 1986) using IRAF⁴. Wavelength calibration was performed using He-Arg lamps. The spectra were then simply normalized to their continuum because no spectroscopic standard was available for the star HD 74194 in the ESO archive, and were stacked together to increase the S/N ratio. The wavelength calibration uncertainty was $\sim 0.5 \text{ \AA}$ for all cases; this was checked using the positions of background night sky lines.

The analysis of the optical spectrum of HD 74194 (Fig. 4) shows the $H\alpha$ line in emission (with $EW = 1.0 \pm 0.1 \text{ \AA}$) with a P-Cyg profile; besides, HeI absorption lines at 6675 and 7065 Å and the diffuse interstellar bands (DIBs) at 6280 Å and 6515 Å are also detected.

The P-Cyg profile indicates an escape velocity of $600 \pm 50 \text{ km s}^{-1}$. Assuming that $v_\infty/v_{\text{escape}} = 2.78 \pm 0.36$ (Groenewegen et al. 1989), this is consistent with the value of $v_\infty = 2000 \text{ km s}^{-1}$ derived from *IUE* spectra by Lamers et al. (1995) and Snow et al. (1994). We also analysed the archival *HST*/GHRS spectrum of HD 74194 around the O IV and Si IV lines, and found maximum velocities of $3100 \pm 100 \text{ km s}^{-1}$ for both lines (see Fig. 4).

The positional consistency of this star with the quiescent emission of IGR J08408–4503 suggests that HD 74194 is an O-type supergiant fast X-ray transient.

The fact that HD 74194 is of spectral type O8.5 Ib (Walborn 1973) implies $M_V = -6.2$ and $(B - V)_0 = -0.285$ (Lang 1992).

⁴ The image reduction and analysis facility (IRAF) software is available from the NOAO website: <http://iraf.noao.edu/>.

Using the observed $V = 7.55$ and $B - V = +0.22$ for this star (Drilling 1991), we obtain a color excess of $E(B - V) = +0.505$ and a distance $d \sim 2.7 \text{ kpc}$. This distance estimate is in agreement with that obtained from the *Hipparcos* satellite (Perryman et al. 1997), which measured an annual parallax $\pi = 0.36 \pm 0.64$ milliarcsec for HD 74194; this value implies a distance $d \sim 2.8 \text{ kpc}$ (with a large error) to this source. We also estimated the color excess from *IUE* archival spectra (datasets LWP2966 [1–2] and SWP5302 [3–5]), by calculating the reddening necessary to compensate for the 2200 Å dust extinction feature, and found $E(B - V) = +0.63$, similar to the value derived above when taking into account the uncertainty on the extinction law. The color excess is less than half of the value of +1.66 obtained from infrared maps (Schlegel et al. 1998), thereby supporting a relatively close distance to Earth. This distance places HD 74194 in the Carina Galactic spiral arm tangent (see, e.g., Leitch & Vasisht 1998), and in this direction, the interstellar absorption column density can be estimated as $N_{\text{H}}^{\text{ISM}} \simeq 3 \times 10^{21} \text{ cm}^{-2}$.

4. Discussion

Fast hard X-ray outbursts are mostly known in three broad classes of objects discussed below: Be transients, thermonuclear flashes, and supergiant fast X-ray transient (SFXT) systems.

4.1. Be transient systems

The outbursts exhibited by most Be transient systems are of 2 different origins: they are either related to the orbital period of the neutron star reaching the disk of the Be star; or they are large, seemingly random, and last a few days.

Few Be HMXBs are known to show fast and occasional outbursts. An example is A0538–66, which is probably a super-Eddington X-ray source (Skinner et al. 1982).

The flares of IGR J08408–4503 are probably not of this type, because the timescales are completely different, its flaring luminosity is less than 1% of the Eddington luminosity, and its optical counter-part is not a Be-type star.

4.2. Thermonuclear flashes

Alternatively, thermonuclear flashes – similar to those seen in LMXBs – could be envisioned. But in HMXBs, the presence of a magnetic field funnels the accretion stream onto the magnetic polar caps of the neutron star (NS), thus preventing the formation of a boundary layer in which H and He could burn. Moreover, these type I flashes are shorter ($\approx 30 \text{ s}$), have a much higher peak luminosity, and are much softer than observed in IGR J08408–4503 (Remillard et al. 2006). Therefore, the origin of the flares in this case is most likely not linked to thermonuclear flashes.

4.3. Supergiant Fast X-ray Transients

IGR J08408–4503 shares many characteristics with other SFXT systems discovered by *INTEGRAL* (e.g. Sguera et al. 2006):

- two X-ray flares have been observed from IGR J08408–4503 in 12 weeks of cumulated *INTEGRAL* observations;
- the bright flares are fast, with a typical duration⁵ of 1000 s;

⁵ The total duration of the first flare of IGR J08408–4503 observed by *INTEGRAL* was at least 6 h.

- the X-ray luminosity during the 1000 s flare is $6 \times 10^{35} \text{ erg s}^{-1}$, while the quiescence luminosity is lower than $5 \times 10^{33} \text{ erg s}^{-1}$ and has been as low as $3.0 \times 10^{32} \text{ erg s}^{-1}$ during the *Swift*/XRT observation;
- during flares, the hard X-ray spectrum features a cutoff at $14.8 \pm 3.4 \text{ keV}$ that is typical of accreting pulsars;
- the optical counterpart is a supergiant OB star.

It is impossible to formally exclude that the X-ray source may be unrelated to the O star. However, for the rest of the discussion, the many similarities between IGR J08408–4503 and other SFXTs will be taken as an evidence for its association with HD 74194.

The typical X-ray luminosity of O-type stars ranges from 10^{31} to $10^{34} \text{ erg s}^{-1}$, so it is likely that the X-ray luminosity observed in quiescence ($3 \times 10^{32} \text{ erg s}^{-1}$) is emitted either by the star itself (through shocks in its wind), or by the interaction of its wind with the interstellar medium. The very soft spectrum observed in quiescence also does not show any evidence for accretion.

HD 74194 features micro-variability with a period of 7.8 days (Koen & Eyer 2002). Such a micro-variability has been associated with stellar spots, or with density waves in the atmosphere (van Genderen et al. 1989). Nevertheless, the variability amplitude of 5% does not seem to be related to the observed X-ray variability and is too large to be the signature of an orbital period. The high luminosity X-ray flares, with their hard spectra, are to be explained by another mechanism.

The stellar wind parameters of HD 74194, in particular its mass loss rate $\dot{M} = 1.4 \times 10^{-6} M_{\odot} \text{ yr}^{-1}$ (Krtićka & Kubát 2001) and its terminal velocity $v_{\infty} = 2000 \pm 300 \text{ km s}^{-1}$ (Lamers et al. 1995), can be used as input for different models.

If a NS orbits within the wind of an O-type star, an X-ray luminosity of $10^{36} (r_{\text{orb}}/10^{12})^{-2} \text{ erg s}^{-1}$ (where r_{orb} is the orbital radius in cm) is expected, which is much higher than observed on average in the present case, unless r_{orb} is larger than 10^{13} cm .

The flip-flop instability of wind accretion flow (Benensohn et al. 1997) cannot account for the observed variability: it predicts variations of the accretion rate by a factor up to 10 only, i.e. much smaller than observed, and on a time scale $R_a/v_{\infty} \approx 10^2\text{--}10^3 \text{ s}$ (where R_a is the effective accretion radius), much too short to explain the observed flare frequency.

The propeller mechanism (Illarionov & Sunyaev 1975) could also be envisioned to explain the outbursts, supposing that during quiescence, the NS is rotating fast enough to centrifugally inhibit the accretion of matter from the O-type companion. Outbursts would then be observed when a change occurs, switching off the propeller mechanism for a short period. Considering the observed burst duration, the changes cannot be driven by rotation. It is also very unlikely that the ignition and stop of accretion could be driven by a sudden change of the magnetic field and back within a few ks.

The most likely source for the observed flaring behavior is therefore a sudden change of the density of the gas trapped within the accretion radius: this is expected to happen if the stellar wind is clumpy.

Assuming that the flares are the signature of the accretion of wind clumps on a compact object orbiting at 10^{13} cm , and that

the flare duration is related to the clump size, the clump column density can be evaluated as $5 \times 10^{23} \text{ cm}^{-2}$. Assuming a spherical shape for the clumps, their typical mass can be estimated as 10^{18} g . The flare frequency can then be used to estimate the stellar mass loss rate in the form of clumps as $10^{-6} M_{\odot} \text{ yr}^{-1}$ (for a spherical geometry).

The density of the clumps ($\sim 10^{13} \text{ g cm}^{-3}$) is only slightly above the peak densities predicted by hydrodynamic simulations of growing wind perturbations induced by line-driven instabilities (see Fig. 6 in Feldmeier et al. 1997). The predicted density ratio of $10^4\text{--}10^6$ between the dense and hot phases of the wind at a given radius may explain the large variations between the flaring and quiescent luminosities.

The wind clumps are massive enough to generate the outbursts while being rare enough to explain their low frequency. Using the observed luminosities and flare frequencies, the clump mass loss rate and N_{H} density are highly dependent on the orbital radius considered. If this simple model is correct, the flare frequency⁶ constrains this radius to be of the order of 10^{13} cm . The main difference between SFXTs and persistent super-giant HMXBs would then be their different orbital radius: a few R_* in persistent systems, but tens of R_* in SFXTs.

Acknowledgements. This research has made use of observations from *Swift*, *INTEGRAL*, the ESO/ST-ECF Science Archive, *HST*, 2MASS, of SIMBAD and of IRAF. N.M. acknowledges the ASI financial support via grant 1/023/05/0. RW thanks Lydia Oskina for fruitful discussions. J.C.L. acknowledges support through the *XMM-INTTEGRAL* PRODEX project and IAP contract P5/36.

References

- Benensohn, J. S., Lamb, D. Q., & Taam, R. E. 1997, *ApJ*, 478, 723
 Brandt, S., Budtz-Joergensen, C., Lund, N., et al. 2006, *ATel*, 817
 Drilling, J. S. 1991, *ApJS*, 76, 1033
 Feldmeier, A., Puls, J., & Pauldrach, A. W. A. 1997, *A&A*, 322, 878
 Gehrels, N., Chincarini, G., Giommi, P., et al. 2004, *ApJ*, 611, 1005
 Götz, D., Schanne, S., Rodriguez, J., et al. 2006, *ATel*, 813
 Groenewegen, M. A. T., Lamers, H. J. G. L. M., & Pauldrach, A. W. A. 1989, *A&A*, 221, 78
 Horne, K. 1986, *PASP*, 98, 609
 Illarionov, A. F., & Sunyaev, R. A. 1975, *A&A*, 39, 185
 Kennea, J. A., & Campana, S. 2006, *ATel*, 818
 Koen, C., & Eyer, L. 2002, *MNRAS*, 331, 45
 Krtićka, J., & Kubát, J. 2001, *A&A*, 377, 175
 Lamers, H. J. G. L. M., Snow, T. P., & Lindholm, D. M. 1995, *ApJ*, 455, 269
 Lang, K. R. 1992, *Astrophysical Data I. Planets and Stars*, 937, 33 (Berlin, Heidelberg, New York: Springer-Verlag)
 Leitch, E. M., & Vasisht, G. 1998, *New Astron.*, 3, 51
 Masetti, N., Bassani, L., Bazzano, A., et al. 2006, *ATel*, 815
 Mereghetti, S., Sidoli, L., Paizis, A., & Götz, D. 2006, *ATel*, 814
 Perryman, M. A. C., Lindegren, L., Kovalevsky, J., et al. 1997, *A&A*, 323, L49
 Remillard, R. A., Lin, D., Cooper, R. L., & Narayan, R. 2006, *ApJ*, 646, 407
 Schlegel, D. J., Finkbeiner, D. P., & Davis, M. 1998, *ApJ*, 500, 525
 Sguera, V., Bazzano, A., Bird, A. J., et al. 2006, *ApJ*, 646, 452
 Skinner, G. K., Bedford, D. K., Elsner, R. F., et al. 1982, *Nature*, 297, 568
 Snow, T. P., Lamers, H. J. G. L. M., Lindholm, D. M., & Odell, A. P. 1994, *ApJS*, 95, 163
 van Genderen, A. M., Bovenschen, H., Engelsman, E. C., et al. 1989, *A&AS*, 79, 263
 Walborn, N. R. 1973, *AJ*, 78, 1067
 Winkler, C., Courvoisier, T. J.-L., Di Cocco, G., et al. 2003, *A&A*, 411, L1

⁶ 1 flare every 6 weeks of cumulated *INTEGRAL* observations.