

## Water masers in the Local Group of galaxies<sup>★</sup>

A. Brunthaler<sup>1,2</sup>, C. Henkel<sup>1</sup>, W. J. G. de Blok<sup>3</sup>, M. J. Reid<sup>4</sup>, L. J. Greenhill<sup>4</sup>, and H. Falcke<sup>5,6</sup>

<sup>1</sup> Max-Planck-Institut für Radioastronomie, Auf dem Hügel 69, 53121 Bonn, Germany  
e-mail: brunthal@mpi.fr-bonn.mpg.de

<sup>2</sup> Joint Institute for VLBI in Europe, Postbus 2, 7990 AA Dwingeloo, The Netherlands

<sup>3</sup> Research School of Astronomy and Astrophysics, Australian National University, Mount Stromlo Observatory, Cotter Road, Weston Creek, ACT 2611, Australia

<sup>4</sup> Harvard-Smithsonian Center for Astrophysics, 60 Garden Street, Cambridge, MA 02138, USA

<sup>5</sup> ASTRON, Postbus 2, 7990 AA Dwingeloo, The Netherlands

<sup>6</sup> Department of Astrophysics, Radboud Universiteit Nijmegen, Postbus 9010, 6500 GL Nijmegen, The Netherlands

Received 22 May 2006 / Accepted 22 June 2006

### ABSTRACT

We compare the number of detected 22 GHz H<sub>2</sub>O masers in the Local Group galaxies M 31, M 33, NGC 6822, IC 10, IC 1613, DDO 187, GR8, NGC 185, and the Magellanic Clouds with the water maser population of the Milky Way. To accomplish this we searched for water maser emission in the two Local Group galaxies M 33 and NGC 6822 using the Very Large Array (VLA) and incorporated results from previous studies. We observed 62 HII regions in M 33 and 36 regions with H $\alpha$  emission in NGC 6822. Detection limits are 0.0015 and 0.0008  $L_{\odot}$  for M 33 and NGC 6822, respectively (corresponding to 47 and 50 mJy in three channels with 0.7 km s<sup>-1</sup> width). M 33 hosts three water masers above our detection limit, while in NGC 6822 no maser source was detected. We find that the water maser detection rates in the Local Group galaxies M 31, M 33, NGC 6822, IC 1613, DDO 187, GR8, NGC 185, and the Magellanic Clouds are consistent with expectations from the Galactic water masers if one considers the different star formation rates of the galaxies. However, the galaxy IC 10 exhibits an overabundance of masers, which may result from a compact central starburst.

**Key words.** masers – galaxies: Local Group

### 1. Introduction

Galactic water maser emission, discovered by Cheung et al. (1969), is mainly associated with star forming regions and late type stars. In star forming regions the masers are found in the vicinity of compact HII regions (Genzel & Downes 1977). Observations of these maser sources trace extremely dense ( $>10^7$  cm<sup>-3</sup>) and warm ( $>400$  K) molecular gas and yield important information about physical and dynamical properties of their environments. They can also be used to measure accurate annual parallaxes and proper motions of star forming regions using Very Long Baseline Interferometry (VLBI) (e.g. Hachisuka et al. 2006). While more than one thousand water masers are known in the Milky Way (Valdettaro et al. 2001), only a small number are known in other Local Group galaxies.

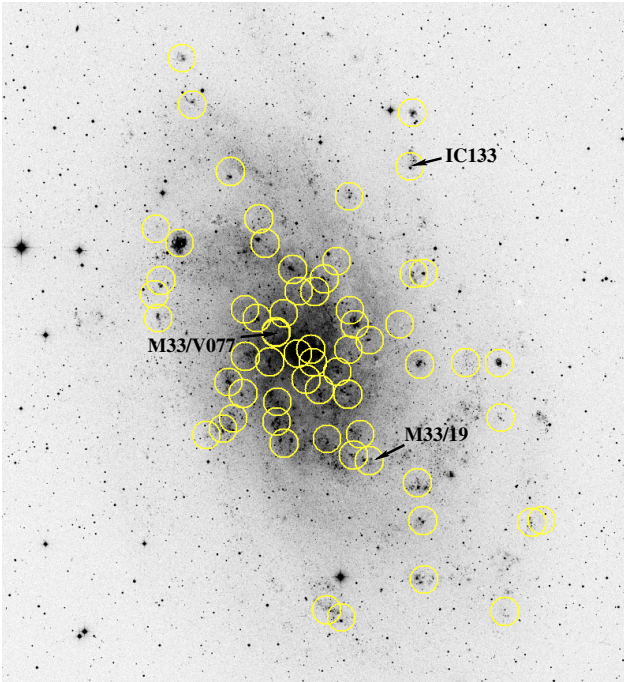
The first extragalactic water maser was discovered by Churchwell et al. (1977) in IC 133, a star forming region in the Local Group galaxy M 33. Further water masers in Local Group galaxies were found towards the Magellanic Clouds (e.g. Scalise & Braz 1981) and IC 10 (e.g. Becker et al. 1993). Searches toward M 31 (Greenhill et al. 1995; Imai et al. 2001) and other Local Group galaxies (Huchtmeier et al. 1980; Greenhill et al. 1990) have not yet yielded a detection. Beyond the Local Group, water masers are found mainly toward active galactic nuclei (see Zhang et al. 2006; and Kondratko 2006, for a list, and <http://www.cfa.harvard.edu/wmcp/surveys/survey.html> for an updated list).

Proper motion measurements and accurate distances of Local Group galaxies are important for our understanding of the dynamics and evolution of the Local Group. With the NRAO<sup>1</sup> Very Long Baseline Array (VLBA) Brunthaler et al. (2005) measured the proper motions of two regions of water maser activity on opposite sides of M 33. The comparison of the relative proper motion between the two regions and the expected motion from the known rotation curve and inclination of M 33 led to a determination of a rotational parallax ( $730 \pm 168$  kiloparsecs) of this galaxy. This distance is consistent with recent Cepheid and tip of the red giant branch estimates (Lee et al. 2002; McConnachie et al. 2005) and earlier distance estimates using the internal motions of water masers in IC 133 (Greenhill et al. 1993; Argon et al. 2004). Since the proper motion measurements were made relative to a distant extragalactic background source, the proper motion of M 33 itself could also be determined. This measured proper motion of M 33 is a first important step towards a kinematical model of the Local Group and was used to constrain the proper motion of the Andromeda Galaxy M 31 (Loeb et al. 2005).

The interpretation of the proper motions of water masers in Local Group galaxies may be limited by the unknown three dimensional peculiar motions of the star forming regions. In the Milky Way, peculiar motions of star forming regions can be 20 km s<sup>-1</sup> as seen in W3(OH) (Xu et al. 2006). Hence it is

<sup>1</sup> The National Radio Astronomy Observatory is operated by Associated Universities, Inc., under a cooperative agreement with the National Science Foundation.

<sup>★</sup> Appendix A is only available in electronic form at <http://www.edpsciences.org>



**Fig. 1.** DDS image of M 33 with the positions of the 62 observed HII regions. The diameter of the circles is 2 arcmin, corresponding to the primary beam of the VLA antennas.

important to use multiple regions of maser activity for proper motion studies to constrain the systematic effect of peculiar motions. This led us to search for water vapor masers towards 62 HII regions in M 33 with the NRAO Very Large Array (VLA).

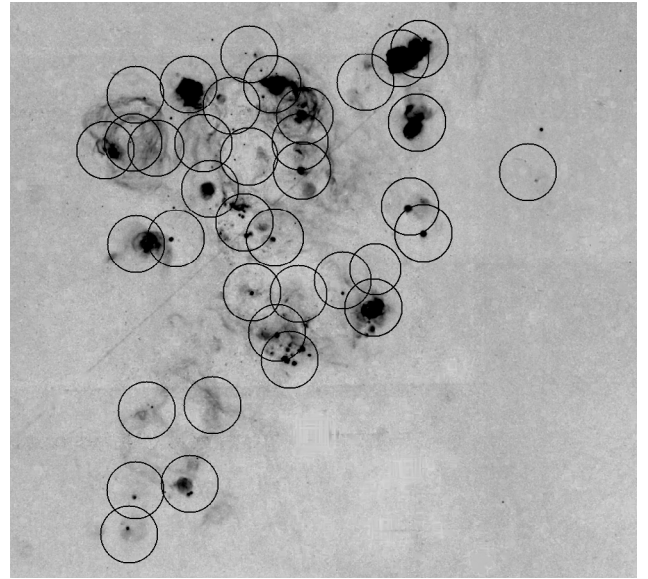
A detection of maser sources in other Local Group galaxies would allow us to extend such studies considerably. Since the strongest maser emission from high-mass star forming regions in our Galaxy is typically 100 times stronger than emission from late-type stars, we targeted NGC 6822, a northern Local Group member with prominent star formation activity.

## 2. Observations

### 2.1. M33

We selected HII regions which also have HII velocity measurements (Zaritsky et al. 1989) and are also identified through their radio continuum emission by Viallefond et al. (1986) with flux densities above 0.5 mJy at 1.4 GHz. We also added NGC 588 and six HII regions from Viallefond et al. (1986) that are either bright at radio frequencies ( $>1.8$  mJy) or are located in the outer parts of M 33 (the last six sources in Table A.1). The two maser sources in M 33 from our VLBA observations (Brunthaler et al. 2005), M 33/19 and IC 133, were observed to ensure correct telescope and receiver operation and to investigate time variability. The 62 observed fields are listed in Tables A.1 and 2 and are shown in Fig. 1. Here the source name M 33/V001 stands for source 001 from the source list in Viallefond et al. (1986).

The observations were made with the VLA in A-configuration on 15 September and 18 November 2004 and lasted 7.5 and 6 h, respectively. The source 3C 48 was the primary flux density calibrator. We used fast switching, spending 120 s on the target and 60 s on a reference source (3C 48) for a total of 12 min for each source in the first observation and 9 min in the second observation. The integration time was 3 s. The observations were made with a total bandwidth



**Fig. 2.** The  $H\alpha$  distribution in the central part of NGC 6822 (taken from de Blok & Walter 2006) with the positions of the observed regions. The diameter of the circles is 2 arcmin, the primary beam of the VLA antennas.

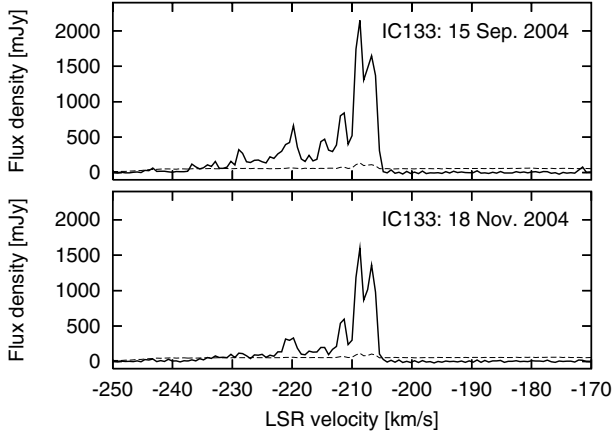
of 6.25 MHz and 128 spectral channels corresponding to a channel spacing of  $\sim 0.7$  km s $^{-1}$ . The band was centered at the velocity of the HII gas for sources listed in Zaritsky et al. (1989). For sources with no velocity information, we calculated the expected radial velocity using the rotation model of M 33 by Corbelli & Schneider (1997). The uncertainty of the model is less than 15 km s $^{-1}$  (see discussion in Brunthaler et al. 2005) and much smaller than the covered velocity range of 84 km s $^{-1}$ .

### 2.2. NGC 6822

NGC 6822 was observed with the VLA in A-configuration on 13 March (2 h), 25 March (2.5 h), 31 March (2.5 h), 10 April (2 h), and 17 April 2006 (2.5 h). We observed a total of 36 regions with  $H\alpha$  emission (Fig. 2 and Table 3). 3C 48 was also the primary flux density calibrator. The observations were similar to the observations of M 33 with fast switching between the target (120 s) and the reference source 1939-154 (60 s) for a total of 12 min. We used the HI data from de Blok & Walter (2006) to estimate the radial velocities of the gas at the different pointings.

## 3. Data reduction and results

The data for both galaxies were edited and calibrated with standard techniques in the Astronomical Image Processing System (AIPS). We used a source model generated by the AIPS task CALRD for the phase calibration on 3C 48 and a point source model for 1939-154. The primary beam of the VLA antennas at a frequency of 22 GHz has a full-width at half-maximum of  $\approx 2$  arcmin. We mapped all frequency channels for each telescope pointing to half-power response of the primary beam with  $4096 \times 4096$  pixels of  $0.03''$ . The resulting data cubes were then searched for emission. We considered emission as real only if detected in at least three contiguous frequency channels with a signal to noise ratio of  $>5\sigma$  or in a single channel at  $>7\sigma$ .



**Fig. 3.** Spectra of IC 133 Main for the observations on 15 September 2004 (*upper panel*) and 18 November 2004 (*lower panel*). The dashed lines are the  $5\sigma$  detection limits in a single channel.

### 3.1. M33

We observed maser emission in two well known HII regions, namely M33/V028 (IC 133), and M33/V033 (M33/19). These two maser sources have been studied in detail previously (see Greenhill et al. 1993; Argon et al. 2004; Brunthaler et al. 2005). Other tentative water maser detections were reported in Huchtmeier et al. (1980) and Huchtmeier et al. (1988), of which we only confirm emission from M33/V077 (listed as M33/50 in Huchtmeier et al. 1988). For this source we obtain a position of:

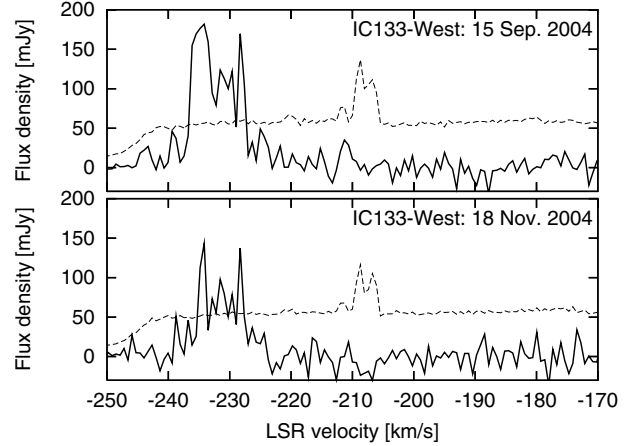
$$\alpha_{J2000} = 01^{\text{h}} 34^{\text{m}} 00.23^{\text{s}} \quad \delta_{J2000} = +30^{\circ} 40' 47.3'' \quad (1)$$

with an uncertainty of 0.1 arcsec.

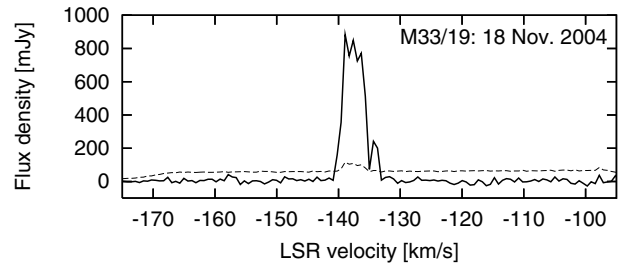
For all other regions we derived  $5\sigma$  upper limits between 37 and 65 mJy per  $0.7 \text{ km s}^{-1}$  (see Tables A.1 and 2) depending on the observing time and amount of flagged data, with an average value of 47 mJy. We did not detect a maser in M33/16 that was reported based on Effelsberg single-dish data in Huchtmeier et al. (1988). M33/16 is located less than 30 arcsec from the known maser in M33/19, so that an interferometer is needed to clearly discriminate between the two sources. The maser in M33/2 at  $-162 \text{ km s}^{-1}$  (Huchtmeier et al. 1978, 1980) can not be confirmed.

In IC 133 the emission is found in two spatially distinct regions separated by  $\sim 0.3$  arcsec, IC 133-Main and IC 133-West. The spectra of all detected sources are shown in Figs. 3–6. IC 133 and M33/V077 were observed in both observing periods, while M33/19 was observed only during the second period. IC 133 and M33/V077 show variability between the two observations. The peak flux densities of both sources dropped by  $\sim 25\%$ . For individual channels we find variations between 0 and  $-70\%$  in IC 133 and between  $+70$  and  $-50\%$  in M33/V077. The large differences between individual channels show clearly that a major part of the variations are intrinsic to the maser sources and not caused by instrumental effects. Similar variations are common in Galactic water maser sources (e.g. Brand et al. 2005) or in IC 10, where even intraday variations were found (Argon et al. 1994) although interstellar scintillation can not be ruled out in IC 10.

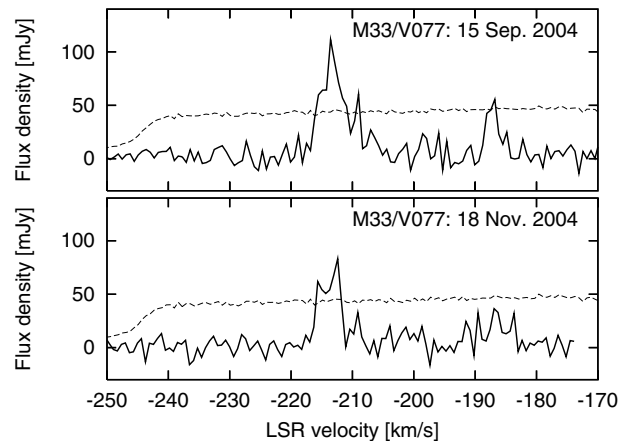
The spectrum of IC 133-Main has a peak near  $-210 \text{ km s}^{-1}$  and a one-sided broad wing extending down to  $\sim 240 \text{ km s}^{-1}$  which is similar to published spectra in the literature (see e.g. Huchtmeier et al. 1988, for several spectra between 1976 and 1985). The peak flux densities vary between 1 and 2 Jy and



**Fig. 4.** Spectra of IC 133-West for the observations on 15 September 2004 (*upper panel*) and 18 November 2004 (*lower panel*). The dashed lines are the  $5\sigma$  detection limits in a single channel.



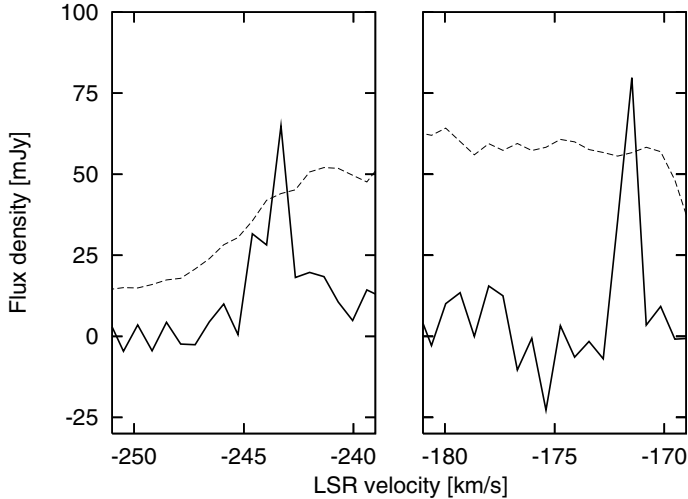
**Fig. 5.** Spectrum of M33/19 for the observation on 18 November 2004. The dashed line is the  $5\sigma$  detection limit in a single channel.



**Fig. 6.** Spectra of M33/V077 for the observations on 15 September 2004 (*upper panel*) and 18 November 2004 (*lower panel*). The dashed lines are the  $5\sigma$  detection limits in a single channel.

new features appear in the broad wing towards lower radial velocities on timescales of months to years. However, in the first epoch we detect weak emission with flux densities of 65 and 79 mJy ( $7.4$  and  $7.2\sigma$ ) at  $-243 \text{ km s}^{-1}$  and  $-171 \text{ km s}^{-1}$ , respectively (see Fig. 7). This weak emission is almost symmetrical to the strongest peak at  $-208 \text{ km s}^{-1}$ . The detection of emission at  $-171 \text{ km s}^{-1}$  is to our knowledge the first time that emission at significantly higher radial velocities than the strong peak near  $-210 \text{ km s}^{-1}$  has been seen.

Figure 8 shows the positions of the detected maser features in each velocity channel relative to the position of the brightest channel. In M33/19 and M33/V077 the emission in all



**Fig. 7.** Blow-up of the weak emission around  $-243 \text{ km s}^{-1}$  (left) and  $-171 \text{ km s}^{-1}$  (right) from the observations of IC 133 on 15 September 2004. The dashed lines are the  $5\sigma$  detection limits in a single channel.

frequency channels was found less than 20 milliarcseconds from the position of the brightest channel. In IC 133-Main one can clearly see that the emission is spatially extended with an extension towards the south east. Higher resolution VLBI observations of IC 133-Main have shown that IC 133-Main consists of two spatially separated regions of maser activity (Greenhill et al. 1990; Brunthaler 2004, 2005), one with the strong emission at  $-210 \text{ km s}^{-1}$  and one is located  $\sim 0.02$  arcsec towards the south-east with emission at velocities of  $-220$  to  $-240 \text{ km s}^{-1}$ . The emission at  $-171 \text{ km s}^{-1}$  and  $-243 \text{ km s}^{-1}$  are located in the south-eastern and north-eastern tip of the region with maser emission, respectively.

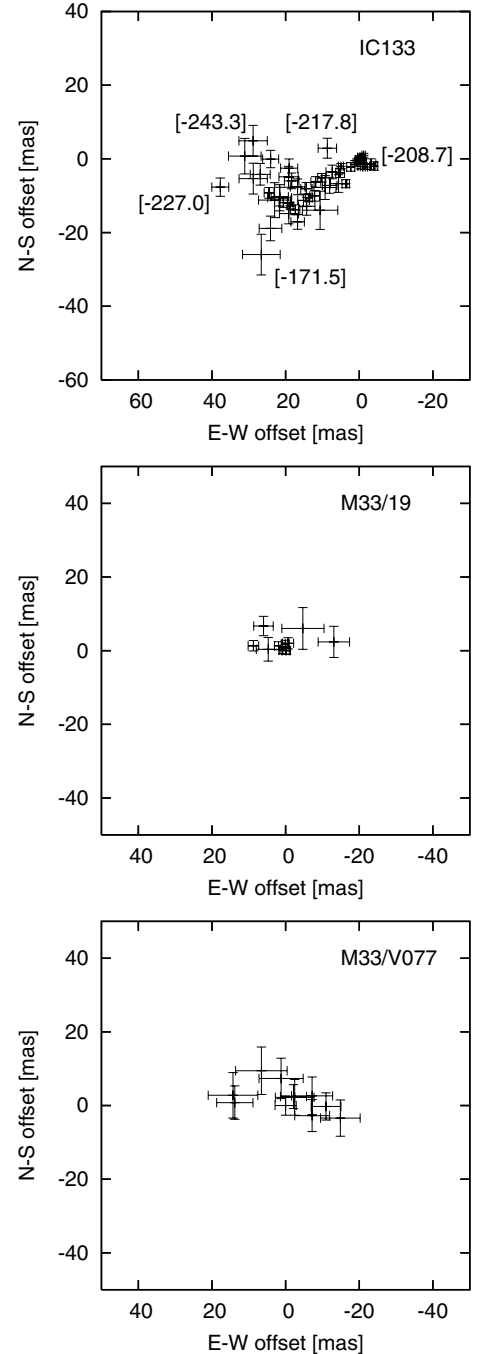
In M 33/V077 we also detect a weaker component at  $\sim -188 \text{ km s}^{-1}$  that was not seen before. Follow-up VLBI observations will be needed to see whether or not this component originates toward the same region on scales of a few milliarcseconds as the  $-215 \text{ km s}^{-1}$  complex.

### 3.2. NGC 6822

No maser was detected in NGC 6822. We derived  $5\sigma$  upper limits between 36 and 78 mJy. On 31 March 2006 we detected an  $8\sigma$  peak in one frequency channel towards NGC 6822-S13. However, we do not consider this a firm detection, since it was found in only one channel and not confirmed in the observation of 10 April 2006. Please note that  $5$ – $7\sigma$  peaks were found in almost every source, because of the large number ( $\sim 10^6$ ) of independent beams for each pointing, while in the case of the high velocity components in IC 133 we have one additional constraint – the position.

## 4. Discussion

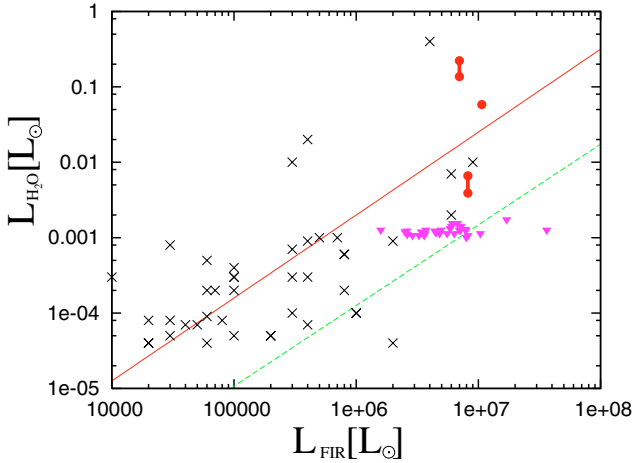
In Fig. 9, we plot the maser luminosity (isotropic emission assumed) versus the far-infrared (FIR) luminosity for the sources in our observations of M 33. The FIR luminosities of the HII regions were taken from Hippelein et al. (2003). The FIR data in Hippelein et al. (2003) has a spatial resolution of 240–400 pc in the 60–170  $\mu\text{m}$  range. Also plotted are the correlations found for Galactic water maser sources from Palagi et al. (1993). The solid line shows the correlation for detected maser sources.



**Fig. 8.** Positions of the detected maser features in each velocity channel relative to the position of the brightest channel from IC 133 on 15 September 2004 (top), M 33/19 on 18 November 2004 (middle), and M 33/V077 on 15 September 2004 (bottom). Radial velocities for selected channels are given in brackets. The errorbars are statistical errors.

The dashed line shows the correlation if one considers also the Galactic non detections. Comparing the FIR luminosities of sources in M 33 with Galactic sources is difficult, because of the low angular resolution of the FIR data from M 33. The FIR luminosities will be overestimated if several HII regions are blended within one beam. Using higher resolution (i.e. Spitzer) data might therefore move the points in Fig. 9 to the left. Hence, the FIR luminosity values in Fig. 9 are upper limits. Nevertheless, our results are in rough agreement with the brightest masers of





**Fig. 9.** Maser luminosity versus FIR luminosity in M33. The FIR luminosities of the respective HII regions were taken from Hippelein et al. (2003). The lines represent the correlations found for Galactic maser sources by Palagi et al. (1993) for detected sources (solid line) and including non detections (dashed line). The triangles are  $5\sigma$  upper limits. The masers in IC 133 and M33/V077 were observed twice. Crosses (x) are the Galactic water masers from Palagi et al. (1993).

the Milky Way, given the large scatter of more than one magnitude in the Milky Way.

The detection limit for our search in M33 corresponds to  $0.0015 L_{\odot}$  (47 mJy in three channels of  $0.7 \text{ km s}^{-1}$  width) for an assumed distance of 809 kpc (McConnachie et al. 2005). Greenhill et al. (1990) derive the luminosity function for the  $\text{H}_2\text{O}$  masers in Galactic star forming regions to be

$$\log N = -0.6 \times (1 + \log L_{\text{H}_2\text{O}}). \quad (2)$$

Using this luminosity function, one expects  $\sim 12$  masers with  $L_{\text{H}_2\text{O}} > 0.0015 L_{\odot}$  in the Milky Way. This is reasonable close to the 9 known masers with  $L_{\text{H}_2\text{O}} > 0.0015 L_{\odot}$  in the Milky Way from the list in Palagi et al. (1993). Repeating this analysis using the flux density detection limit instead of the maser luminosity detection limit yields similar but slightly lower numbers. For our Galaxy at the distance to M33 one would expect 8 masers with peak flux densities above 47 mJy. The slightly different value can be explained by sources with a total luminosity larger than  $0.0015 L_{\odot}$  that show broad line profiles but have a lower peak flux. These sources would not be detected by our observations.

To better compare this with our detection rate in M33, one should account for the different star formation rates in the two galaxies. While the star formation rate in M33 is  $0.33\text{--}0.69 M_{\odot} \text{ yr}^{-1}$  (Hippelein et al. 2003), the Milky Way has a star formation rate of  $\sim 4 M_{\odot} \text{ yr}^{-1}$  (Diehl et al. 2006) while other studies give values between  $0.8 M_{\odot} \text{ yr}^{-1}$  (Talbot 1980) and  $13 M_{\odot} \text{ yr}^{-1}$  (Guesten & Mezger 1982). Assuming that the maser rate and star formation rate are roughly proportional, which is reasonable when cloud conditions and initial stellar mass functions are similar, one would expect a factor of  $\frac{4}{0.69} = 6$  to  $\frac{4}{0.33} = 12$  times less masers in M33 than in the Milky Way. For our detection limit of  $0.0015 L_{\odot}$  we thus expect to find 1–2 masers in M33. For the flux density detection limit of 47 mJy one expects to find 0.7–1.3 masers in M33.

Our detection limit for NGC 6822 corresponds to  $0.0008 L_{\odot}$  for a distance of 490 kpc (Mateo 1998) and is a factor 10 better than previous searches (Greenhill et al. 1990). Our Galaxy hosts 18 or 15 water masers with  $L_{\text{H}_2\text{O}} > 0.0008 L_{\odot}$  or a peak

**Table 1.** Local Group galaxies that were searched for masers with the detection limit, number of detected masers, star formation rate, and number of expected masers.

| Source   | $L_{\text{H}_2\text{O}} [L_{\odot}]$ | $N_{\text{H}_2\text{O}}$ | $SFR [M_{\odot} \text{ yr}^{-1}]$       | $N_{\text{expected}}$ |
|----------|--------------------------------------|--------------------------|---|-----------------------|
| M33      | $1.5 \times 10^{-3} \text{ }^a$      | 3                        | $0.33\text{--}0.69 \text{ }^h$          | 1–2                   |
| NGC 6822 | $8.0 \times 10^{-4} \text{ }^a$      | 0                        | $0.06 \text{ }^i$                       | 0.3                   |
| IC 10    | $4.0 \times 10^{-3} \text{ }^b$      | 2                        | $0.05 \text{ }^j$                       | 0.1                   |
| SMC      | $3.5 \times 10^{-4} \text{ }^c$      | 2                        | $0.05 \text{ }^k$                       | 0.4                   |
| LMC      | $3.0 \times 10^{-5} \text{ }^d$      | 7                        | $0.40 \text{ }^k$                       | 13.0                  |
| M31      | $4.9 \times 10^{-3} \text{ }^{e,f}$  | 0                        | $0.35 \text{ }^l$                       | 0.5                   |
| IC 1613  | $9.0 \times 10^{-3} \text{ }^e$      | 0                        | $2.5 \times 10^{-3} \text{ }^j$         | $3 \times 10^{-3}$    |
| DDO 187  | $3.0 \times 10^{-2} \text{ }^e$      | 0                        | $3 \times 10^{-4} \text{ }^j$           | $1.5 \times 10^{-4}$  |
| GR8      | $2.1 \times 10^{-2} \text{ }^e$      | 0                        | $2.2 \times 10^{-3} \text{ }^j$         | $1.4 \times 10^{-3}$  |
| NGC 185  | $4.4 \times 10^{-3} \text{ }^g$      | 0                        | $3\text{--}6 \times 10^{-3} \text{ }^m$ | 0.005–0.01            |

References: <sup>a</sup> this work <sup>b</sup> Becker et al. (1993); <sup>c</sup> Scalise & Braz (1982); <sup>d</sup> Lazendic et al. (2002); <sup>e</sup> Greenhill et al. (1995) <sup>f</sup> Imai et al. (2001); <sup>g</sup> Huchtmeier et al. (1980); <sup>h</sup> Hippelein et al. (2003); <sup>i</sup> de Blok & Walter (2006); <sup>j</sup> Hunter & Elmegreen (2004); <sup>k</sup> Hatzidimitriou (1999); Israel (1980); <sup>l</sup> Walterbos & Braun (1994); <sup>m</sup> Martínez-Delgado et al. (1999)

flux density of more than 50 mJy, when viewed from a distance of 490 kpc. Scaled with the star formation rate of NGC 6822, which is  $0.06 M_{\odot} \text{ yr}^{-1}$  (de Blok & Walter 2006), one expects to find  $\frac{0.06}{4} \times 18 = 0.27$  masers in NGC 6822.

We can repeat this analysis for other Local Group galaxies with water maser searches from the literature, namely IC 10, the Magellanic Clouds, M31, IC 1613, DDO 187, NGC 185, and GR8. The observational detection limits, observed detection rates, estimated star formation rates, and number of expected maser sources for the above mentioned galaxies are summarized in Table 1. The searches for maser sources in any of the star forming Local Group galaxies, except DDO187 and GR8 are not complete due to the large angular size of the galaxies. Thus, it is possible that additional masers are located in regions which were not measured. However, in the Milky Way the most luminous water masers are found in the largest star forming regions (see e.g. the maser luminosity – FIR luminosity correlation in Palagi et al. 1993). Since the largest star forming regions were targeted in the maser searches at least in M33, M31, IC 1613, and NGC 6822 it is not likely that additional masers exist above the detection limits mentioned in Table 1.

The number of masers in all galaxies except IC 10 is consistent with the expected number of maser sources. However, IC 10 shows an overabundance. Possibly, star formation in this galaxy is concentrated in two particular regions near the center of the galaxy, where a small “starburst” creates conditions different from those expected from an average galaxy containing little molecular gas. Based on this analysis it is also not surprising that the previous maser searches in M31, IC 1613, DDO 187, and GR8 with flux density limits of a few hundred mJy, did not detect any masers.

## 5. Conclusion

We have searched for water maser emission with the VLA toward 62 and 36 HII regions in M33 and NGC 6822, respectively. M33 hosts three water masers above our detection limit (all previously identified), while in NGC 6822 no maser source was detected. IC 133 and M33/V077 show velocity components that are displaced by several  $10 \text{ km s}^{-1}$  from previously observed maser features. We also provide an accurate position for

M33/V077, while several previously reported marginal detections in M33 are not confirmed.

The number of known maser sources in the Local Group galaxies M31, M33, NGC 6822, SMC, LMC, IC 1613, DDO 187, NGC 185, and GR8 is consistent with the expected number of maser sources based on the Galactic water maser luminosity function and the current star formation rates. Only the galaxy IC 10 shows a much higher detection rate than expected.

Based on this analysis one can expect to find 17 and 5 water masers with flux densities above 1 mJy in M31 and NGC 6822, respectively, that could be used to measure the proper motions and geometric distances of these galaxies with future radio telescopes like the Square Kilometre Array (SKA)<sup>2</sup>.

*Acknowledgements.* This research was supported by the DFG Priority Programme 1177.

## References

- Argon, A. L., Greenhill, L. J., Moran, J. M., et al. 1994, *ApJ*, 422, 586  
 Argon, A. L., Greenhill, L. J., Moran, J. M., et al. 2004, *ApJ*, 615, 702  
 Becker, R., Henkel, C., Wilson, T. L., & Wouterloot, J. G. A. 1993, *A&A*, 268, 483  
 Brand, J., Cesaroni, R., Comoretto, G., et al. 2005, *Ap&SS*, 295, 133  
 Brunthaler, A. 2004, Ph.D. Thesis  
 Brunthaler, A. 2005, *Reviews of Modern Astronomy*, 18, 179  
 Brunthaler, A., Reid, M. J., Falcke, H., Greenhill, L. J., & Henkel, C. 2005, *Science*, 307, 1440  
 Cheung, A. C., Rank, D. M., Townes, C. H., Thornton, D. D., & Welch, W. J. 1969, *Nature*, 221, 626  
 Churchwell, E., Witzel, A., Huchtmeier, W., et al. 1977, *A&A*, 54, 969  
 Corbelli, E., & Schneider, S. E. 1997, *ApJ*, 479, 244  
 de Blok, W. J. G., & Walter, F. 2006, *AJ*, 131, 343  
 Diehl, R., Halloin, H., Kretschmer, K., et al. 2006, *Nature*, 439, 45  
 Genzel, R., & Downes, D. 1977, *A&AS*, 30, 145  
 Greenhill, L. J., Moran, J. M., Reid, M. J., et al. 1990, *ApJ*, 364, 513  
 Greenhill, L. J., Moran, J. M., Reid, M. J., Menten, K. M., & Hirabayashi, H. 1993, *ApJ*, 406, 482  
 Greenhill, L. J., Henkel, C., Becker, R., Wilson, T. L., & Wouterloot, J. G. A. 1995, *A&A*, 304, 21  
 Guesten, R., & Mezger, P. G. 1982, *Vistas in Astronomy*, 26, 159  
 Hachisuka, K., Brunthaler, A., Menten, K. M., et al. 2006, *ApJ*, 645, 337  
 Hatzidimitriou, D. 1999, Intermediate-age and Populations in the Small Magellanic Cloud, in *New Views of the Magellanic Clouds*, ed. Y.-H. Chu, N. Suntzeff, J. Hesser, & D. Bohlender, IAU Symp., 190, 299  
 Hippelein, H., Haas, M., Tuffs, R. J., et al. 2003, *A&A*, 407, 137  
 Huchtmeier, W. K., Witzel, A., Kuehr, H., Pauliny-Toth, I. I., & Roland J. 1978, *A&A*, 64, L21  
 Huchtmeier, W. K., Richter, O.-G., Witzel, A., & Pauliny-Toth, I. 1980, *A&A*, 91, 259  
 Huchtmeier, W. K., Eckart, A., & Zensus, A. J. 1988, *A&A*, 200, 26  
 Hunter, D. A., & Elmegreen, B. G. 2004, *AJ*, 128, 2170  
 Imai, H., Ishihara, Y., Kameya, O., & Nakai, N. 2001, *PASJ*, 53, 489  
 Israel, F. P. 1980, *A&A*, 90, 246  
 Israel, F. P., & van der Kruit, P. C. 1974, *A&A*, 32, 363  
 Kondratko, P. T., & Greenhill, L. J. & Moran, J. M. 2006, *ApJ*, in press  
 Lazendic, J. S., Whiteoak, J. B., Klamer, I., Harbison, P. D., & Kuiper, T. B. H. 2002, *MNRAS*, 331, 969  
 Lee, M. G., Kim, M., Sarajedini, A., Geisler, D., & Gieren, W. 2002, *ApJ*, 565, 959  
 Loeb, A., Reid, M. J., Brunthaler, A., & Falcke, H. 2005, *ApJ*, 633, 894  
 Martínez-Delgado, D., Aparicio, A., & Gallart, C. 1999, *AJ*, 118, 2229  
 Mateo, M. L. 1998, *ARA&A*, 36, 435  
 McConnellachie, A. W., Irwin, M. J., Ferguson, A. M. N., et al. 2005, *MNRAS*, 356, 979  
 Palagi, F., Cesaroni, R., Comoretto, G., Felli, M., & Natale, V. 1993, *A&AS*, 101, 153  
 Scalise, E., & Braz, M. A. 1981, *Nature*, 290, 36  
 Scalise, E., & Braz, M. A. 1982, *AJ*, 87, 528  
 Talbot, R. J. 1980, *ApJ*, 235, 821  
 Valdetaro, R., Palla, F., Brand, J., et al. 2001, *A&A*, 368, 845  
 Viallefond, F., Goss, W. M., van der Hulst, J. M., & Crane, P. C. 1986, *A&AS*, 64, 237  
 Walterbos, R. A. M., & Braun, R. 1994, *ApJ*, 431, 156  
 Xu, Y., Reid, M. J., Zheng, X. W., & Menten, K. M. 2006, *Science*, 311, 54  
 Zaritsky, D., Elston, R., & Hill, J. M. 1989, *AJ*, 97, 97  
 Zhang, J. S., Henkel, C., Kadler, M., et al. 2006, *A&A*, 450, 933

<sup>2</sup> See <http://www.skatelescope.org>

# Online Material

**Appendix A: Tables****Table A.1.** List of observed HII regions on 14 September 2004 with observed coordinates, LSR velocity of the band center and the peak flux density or the  $5\sigma$  limit for a single channel.

| Source    | Other                | RA<br>(B1950) | Dec<br>(B1950) | $v_{\text{LSR}}$<br>[km s <sup>-1</sup> ] | $F_{\text{peak}}$<br>[mJy] |
|-----------|----------------------|---------------|----------------|---|----------------------------|
| M 33/V067 | M 33/42 <sup>1</sup> | 01 31 03.50   | +30 23 55.0    | -174                                      | <43                        |
| M 33/V068 |                      | 01 31 03.60   | +30 28 26.0    | -248                                      | <42                        |
| M 33/V069 |                      | 01 31 07.60   | +30 17 30.0    | -90                                       | <52                        |
| M 33/V070 | IC 142               | 01 31 05.80   | +30 30 00.0    | -244                                      | <43                        |
| M 33/V072 | M 33/46 <sup>2</sup> | 01 31 08.60   | +30 26 50.0    | -252                                      | <43                        |
| M 33/V075 |                      | 01 31 10.10   | +30 20 29.0    | -151                                      | <40                        |
| M 33/V076 |                      | 01 31 10.20   | +30 19 03.0    | -140                                      | <42                        |
| M 33/V077 | M 33/50 <sup>1</sup> | 01 31 10.90   | +30 25 29.0    | -209                                      | 111                        |
| M 33/V028 | IC 133               | 01 30 27.20   | +30 37 30.0    | -210                                      | 2150                       |
| M 33/V079 | M 33/51 <sup>1</sup> | 01 31 13.00   | +30 23 19.0    | -198                                      | <37                        |
| M 33/V083 |                      | 01 31 17.30   | +30 26 27.0    | -232                                      | <40                        |
| M 33/V084 |                      | 01 31 17.40   | +30 33 33.0    | -278                                      | <37                        |
| M 33/V085 |                      | 01 31 15.30   | +30 31 48.5    | -271                                      | <38                        |
| M 33/V089 |                      | 01 31 21.00   | +30 23 41.0    | -198                                      | <38                        |
| M 33/V091 |                      | 01 31 21.50   | +30 27 04.0    | -181                                      | <43                        |
| M 33/V092 |                      | 01 31 21.60   | +30 21 01.0    | -164                                      | <42                        |
| M 33/V094 |                      | 01 31 24.90   | +30 19 13.0    | -174                                      | <53                        |
| M 33/V095 | M 33/58 <sup>1</sup> | 01 31 26.50   | +30 21 49.0    | -212                                      | <48                        |
| M 33/V099 | M 33/61 <sup>1</sup> | 01 31 28.10   | +30 18 27.0    | -160                                      | <46                        |
| M 33/V103 |                      | 01 31 33.50   | +30 17 59.0    | -167                                      | <42                        |
| M 33/V106 | NGC 604              | 01 31 43.60   | +30 31 44.0    | -264                                      | <43                        |
| M 33/V109 |                      | 01 31 49.60   | +30 29 00.0    | -225                                      | <39                        |
| M 33/V110 | M 33/67              | 01 31 50.30   | +30 26 19.0    | -197                                      | <40                        |
| M 33/V111 |                      | 01 31 51.70   | +30 32 43.0    | -232                                      | <40                        |
| M 33/V112 |                      | 01 31 51.80   | +30 28 01.0    | -148                                      | <41                        |
| M 33/V005 |                      | 01 29 53.30   | +30 05 41.0    | -105 <sup>2</sup>                         | <41                        |
| M 33/V046 |                      | 01 30 47.60   | +30 05 04.0    | -104 <sup>2</sup>                         | <42                        |
| M 33/V052 |                      | 01 30 52.50   | +30 05 36.0    | -106 <sup>2</sup>                         | <45                        |
| M 33/V097 | M 33/60 <sup>1</sup> | 01 31 27.10   | +30 36 55.0    | -254 <sup>2</sup>                         | <40                        |
| M 33/V104 |                      | 01 31 40.20   | +30 41 39.0    | -259 <sup>2</sup>                         | <39                        |
| M 33/V107 | M 33/65 <sup>1</sup> | 01 31 44.10   | +30 45 00.0    | -263 <sup>2</sup>                         | <40                        |

<sup>1</sup> After designation of Israel & van der Kruit (1974).<sup>2</sup> Using the rotation model of Corbelli & Schneider (1997).



**Table 2.** List of observed HII regions on 18 November 2004 with observed coordinates, LSR velocity of the band center and the peak flux density or the  $5\sigma$  limit for a single channel.

| Source    | Other                | RA<br>(B1950) | Dec<br>(B1950) | $v_{\text{LSR}}$<br>[km s $^{-1}$ ] | $F_{\text{peak}}$<br>[mJy] |
|-----------|----------------------|---------------|----------------|-------------------------------------|----------------------------|
| M 33/V001 |                      | 01 29 41.50   | +30 12 17.0    | -147                                | <48                        |
| M 33/V003 |                      | 01 29 45.00   | +30 12 07.0    | -135                                | <47                        |
| M 33/V006 |                      | 01 29 55.70   | +30 19 36.0    | -158                                | <48                        |
| M 33/V007 | NGC 588              | 01 29 56.50   | +30 23 30.0    | -158 <sup>2</sup>                   | <47                        |
| M 33/V013 | M 33/2 <sup>1</sup>  | 01 30 07.70   | +30 23 30.0    | -135                                | <48                        |
| M 33/V019 |                      | 01 30 20.40   | +30 07 51.0    | -90                                 | <45                        |
| M 33/V020 | M 33/5 <sup>1</sup>  | 01 30 21.20   | +30 12 07.0    | -107                                | <48                        |
| M 33/V021 | IC 131               | 01 30 22.20   | +30 29 53.0    | -212                                | <46                        |
| M 33/V022 | NGC 592              | 01 30 22.90   | +30 23 19.0    | -168                                | <46                        |
| M 33/V023 |                      | 01 30 23.00   | +30 14 50.0    | -103                                | <56                        |
| M 33/V026 |                      | 01 30 25.40   | +30 29 49.0    | -200                                | <58                        |
| M 33/V027 | IC 132               | 01 30 26.70   | +30 41 21.0    | -242                                | <52                        |
| M 33/V028 | IC 133               | 01 30 27.20   | +30 37 30.0    | -210                                | 1600                       |
| M 33/V029 |                      | 01 30 29.80   | +30 26 08.0    | -191                                | <57                        |
| M 33/V033 | M 33/19 <sup>1</sup> | 01 30 39.20   | +30 16 21.0    | -135                                | 459                        |
| M 33/V034 | M 33/18 <sup>1</sup> | 01 30 39.80   | +30 25 00.0    | -180                                | <58                        |
| M 33/V037 |                      | 01 30 42.30   | +30 18 13.0    | -139                                | <62                        |
| M 33/V040 | M 33/21 <sup>1</sup> | 01 30 44.50   | +30 16 46.0    | -119                                | <65                        |
| M 33/V041 | NGC 595              | 01 30 44.80   | +30 26 08.0    | -220                                | <65                        |
| M 33/V042 | M 33/23 <sup>1</sup> | 01 30 46.50   | +30 27 07.0    | -170                                | <58                        |
| M 33/V043 |                      | 01 30 46.60   | +30 24 18.0    | -140                                | <48                        |
| M 33/V044 | M 33/25 <sup>1</sup> | 01 30 46.70   | +30 21 07.0    | -127                                | <53                        |
| M 33/V045 |                      | 01 30 47.30   | +30 35 18.0    | -241                                | <51                        |
| M 33/V049 |                      | 01 30 50.30   | +30 22 41.0    | -131                                | <49                        |
| M 33/V050 |                      | 01 30 51.10   | +30 30 37.0    | -222                                | <44                        |
| M 33/V054 |                      | 01 30 53.30   | +30 17 50.0    | -136                                | <48                        |
| M 33/V057 | M 33/30 <sup>1</sup> | 01 30 55.20   | +30 29 22.0    | -222                                | <51                        |
| M 33/V059 |                      | 01 30 56.10   | +30 21 23.0    | -135                                | <51                        |
| M 33/V060 |                      | 01 30 58.30   | +30 28 24.0    | -221                                | <49                        |
| M 33/V061 | M 33/35 <sup>1</sup> | 01 30 58.40   | +30 23 20.0    | -171                                | <44                        |
| M 33/V063 | M 33/38 <sup>1</sup> | 01 30 59.40   | +30 24 17.0    | -212                                | <44                        |
| M 33/V064 | M 33/39 <sup>1</sup> | 01 31 00.60   | +30 22 07.0    | -130                                | <44                        |
| M 33/V077 | M 33/50 <sup>1</sup> | 01 31 11.00   | +30 25 23.0    | -215                                | 83                         |

<sup>1</sup> After designation of Israel & van der Kruit (1974).<sup>2</sup> Using the rotation model of Corbelli & Schneider (1997).

**Table 3.** List of observed HII regions on 18 November 2004 with observed coordinates, LSR velocity of the band center and the  $5\sigma$  limit for a single channel.

| Date       | Source      | Other | RA<br>(J2000)  | Dec<br>(J2000) | $v_{\text{LSR}}$<br>[km s <sup>-1</sup> ] | $F_{\text{peak}}$<br>[mJy] |
|------------|-------------|-------|----------------|----------------|---|----------------------------|
| 13.03.2006 | NGC 6822-01 |       | 19:45:05.04974 | -14:43:12.6178 | -48                                       | <43                        |
|            | NGC 6822-02 |       | 19:44:52.86152 | -14:43:11.9484 | -58                                       | <44                        |
|            | NGC 6822-03 |       | 19:44:48.13213 | -14:44:17.8702 | -68                                       | <45                        |
|            | NGC 6822-04 |       | 19:45:17.10323 | -14:45:29.4447 | -38                                       | <46                        |
|            | NGC 6822-05 |       | 19:44:34.27118 | -14:42:16.2557 | -78                                       | <47                        |
|            | NGC 6822-06 |       | 19:44:31.51770 | -14:41:56.9218 | -78                                       | <49                        |
|            | NGC 6822-07 |       | 19:44:31.87935 | -14:44:31.4359 | -78                                       | <51                        |
| 25.03.2006 | NGC 6822-08 |       | 19:44:48.54365 | -14:46:12.0904 | -65                                       | <36                        |
|            | NGC 6822-09 |       | 19:44:32.83735 | -14:47:27.9327 | -75                                       | <38                        |
|            | NGC 6822-10 |       | 19:44:30.90656 | -14:48:23.8619 | -75                                       | <39                        |
|            | NGC 6822-11 |       | 19:45:13.06248 | -14:45:14.1431 | -40                                       | <40                        |
|            | NGC 6822-12 |       | 19:44:38.20420 | -14:51:01.7538 | -65                                       | <38                        |
|            | NGC 6822-16 |       | 19:45:12.65272 | -14:48:47.9304 | -40                                       | <38                        |
|            | NGC 6822-17 |       | 19:45:06.86589 | -14:48:35.9576 | -40                                       | <41                        |
| 31.03.2006 | NGC 6822-13 |       | 19:45:01.90566 | -14:46:52.0675 | -55                                       | <48                        |
|            | NGC 6822-14 |       | 19:44:56.94607 | -14:48:01.9967 | -55                                       | <49                        |
|            | NGC 6822-15 |       | 19:44:52.53709 | -14:48:33.9585 | -55                                       | <49                        |
|            | NGC 6822-18 |       | 19:44:55.84312 | -14:50:29.8476 | -55                                       | <51                        |
|            | NGC 6822-19 |       | 19:44:50.32947 | -14:52:51.6951 | -55                                       | <49                        |
|            | NGC 6822-20 |       | 19:44:52.14471 | -14:51:54.7565 | -55                                       | <59                        |
|            | NGC 6822-23 |       | 19:45:09.77979 | -14:45:25.8082 | -40                                       | <63                        |
|            | NGC 6822-24 |       | 19:44:48.84296 | -14:45:12.4843 | -65                                       | <59                        |
| 10.04.2006 | NGC 6822-21 |       | 19:45:04.80200 | -14:57:13.1100 | -40                                       | <58                        |
|            | NGC 6822-22 |       | 19:45:13.62800 | -14:58:59.6500 | -40                                       | <58                        |
|            | NGC 6822-25 |       | 19:45:01.49300 | -14:54:27.9400 | -40                                       | <58                        |
|            | NGC 6822-28 |       | 19:45:11.05000 | -14:54:38.5800 | -40                                       | <58                        |
|            | NGC 6822-29 |       | 19:45:12.70700 | -14:57:26.4100 | -40                                       | <60                        |
|            | NGC 6822-13 |       | 19:45:02.48330 | -14:47:09.6170 | -70                                       | <46                        |
| 17.04.2006 | NGC 6822-26 |       | 19:44:48.99900 | -14:50:33.5000 | -60                                       | <45                        |
|            | NGC 6822-27 |       | 19:44:42.56900 | -14:50:04.1700 | -60                                       | <45                        |
|            | NGC 6822-30 |       | 19:44:58.80600 | -14:43:57.2400 | -50                                       | <37                        |
|            | NGC 6822-31 |       | 19:45:02.84700 | -14:45:14.5000 | -50                                       | <42                        |
|            | NGC 6822-32 |       | 19:44:56.23500 | -14:45:43.8000 | -50                                       | <38                        |
|            | NGC 6822-33 |       | 19:45:12.76200 | -14:43:33.2500 | -50                                       | <43                        |
|            | NGC 6822-34 |       | 19:44:56.23600 | -14:42:08.0200 | -50                                       | <43                        |
|            | NGC 6822-35 |       | 19:44:15.64400 | -14:46:15.5100 | -80                                       | <46                        |
|            | NGC 6822-36 |       | 19:44:39.34200 | -14:43:06.5700 | -80                                       | <48                        |