

Non-Gaussianity: Comparing wavelet and Fourier based methods

N. Aghanim¹, M. Kunz^{2,3}, P. G. Castro², and O. Forni¹

¹ IAS-CNRS, Bâtiment 121, Université Paris Sud, 91405 Orsay Cedex, France

² Denys Wilkinson building, Oxford University, OX1 3RH, Oxford, UK

³ Astronomy Centre, University of Sussex, BN1 9QJ, Brighton, UK

Received 10 January 2003 / Accepted 28 April 2003

Abstract. In the context of the present and future Cosmic Microwave Background (CMB) experiments, going beyond the information provided by the power spectrum has become necessary in order to tightly constrain the cosmological model. The non-Gaussian signatures in the CMB represent a very promising tool to probe the early universe and the structure formation epoch. We present the results of a comparison between two families of non-Gaussian estimators: The first act on the wavelet space (skewness and excess kurtosis of the wavelet coefficients) and the second group on the Fourier space (bi- and trispectrum). We compare the relative sensitivities of these estimators by applying them to three different data sets meant to reproduce the majority of possible non-Gaussian contributions to the CMB. We find that the skewness in the wavelet space is slightly more sensitive than the bispectrum. For the four point estimators, we find that the excess kurtosis of the wavelet coefficients has very similar capabilities than the diagonal trispectrum while a near-diagonal trispectrum seems to be less sensitive to non-Gaussian signatures.

Key words. cosmology: cosmic microwave background – methods: data analysis, statistical

1. Introduction

Over the last few years, the amount of available data on the Cosmic Microwave Background (CMB) has increased dramatically. Until very recently, measurements of the CMB power spectrum (BOOMERANG, MAXIMA, DASI, CBI, ARCHEOPS, VSA, ACBAR...) had started to shed light on the origin and large scale structure of our universe. In particular, the determination of the density parameter $\Omega \simeq 1$ had been obtained from the position of the first acoustic peak. The recent WMAP experiment confirmed these results and helped to further constrain the cosmological parameters (Bennett et al. 2003). Together with results from other experiments, which probe e.g. the distribution of galaxies and the distances to type-Ia supernovae, a coherent image of today's universe has started to emerge (see e.g. Wang et al. 2002; Bennett et al. 2003). Testing the detailed statistical nature of the CMB anisotropies has become not only one of the major goals of CMB cosmology but it is now also within our reach. The WMAP satellite has provided us with an all sky survey of the CMB with good angular resolution (as will do the future Planck mission). A first analysis of this data set, based on a bispectrum estimator and on Minkowski functionals as probes of non-Gaussianity (Komatsu et al. 2003), has not revealed any deviation from the Gaussian hypothesis.

A Gaussian random field is completely determined by its power spectrum. But many models of the early universe, like inflation (e.g. Bernardeau & Uzan 2002 and references therein), super strings or topological defects, predict non-Gaussian contributions to the initial fluctuations (Luo 1994b; Jaffe 1994; Gangui et al. 1994). Furthermore, any non-linearity in their evolution introduces additional non-Gaussian signatures. An extreme example is gravitational clustering, which makes it quite difficult to extract any primordial non-Gaussianity from the galaxy distribution (Durrer et al. 2000). The CMB on the other hand is to first order free of this complication and is therefore ideally suited to study the early universe. Nevertheless, secondary effects like the Sunyaev-Zel'dovich (SZ) effect (Aghanim & Forni 1999; Cooray 2001), the Ostriker-Vishniac effect (Castro 2003), lensing (Cooray & Hu 2001; Bernardeau et al. 2003) and others add their own contributions to the total non-Gaussianity. To these cosmological effects, we have to add foregrounds as well as systematic effects and instrumental noise. In order to disentangle all those sources from one another, it is essential to assemble a “toolbox” of well-understood, fast and robust methods for probing different aspects of the non-Gaussian signatures.

In this paper, we compare the behaviour of two different classes of estimators, namely the higher order moments in wavelet space, and the bi- and trispectrum. Both of these do not act directly on pixels, but are applied in a dual space. The purpose of this study is not to present novel ways of detecting non-Gaussian signatures, but to discuss practical aspects

Send offprint requests to: N. Aghanim,
e-mail: Nabila.Aghanim@ias.u-psud.fr

of these different approaches, and to compare their behaviour when applied to a selection of synthetic “benchmark” maps which are designed to mimic typical non-Gaussian contributions to the CMB.

After the seminal work of Pando et al. (1998) which consisted of applying wavelet techniques to look for non-Gaussian signatures in the COBE-DMR data, several methods based on the wavelet analysis have been developed in the context of the CMB detection of non-Gaussian signatures (Aghanim & Forni 1999; Forni & Aghanim 1999; Hobson et al. 1999; Barreiro & Hobson 2001; Cayon et al. 2001; Jewell 2001; Martinez-gonzalez et al. 2002; Starck et al. 2003). These methods have proven particularly suitable for statistical studies due to the combination of two characteristics. First, wavelets are quite localised both in space and in frequency, which allows for the features of interest in an image to be present at different scales. Second, the linear transformation properties of Gaussian variables preserve Gaussianity. Conversely, any non-Gaussian signal will exhibit a non-Gaussian distribution of its wavelet coefficients. The two properties combined together allow us to associate the statistical signatures with the spatial features that have caused them.

The wavelet based estimators have been tested and qualified in terms of their sensitivity to the non-Gaussian signatures on a variety of simulated data sets such as cosmic strings, the SZ effect from galaxy clusters, and anisotropies from inhomogeneous reionisation (see the above mentioned references). The galactic contamination from dust emission can induce foreground non-Gaussian signatures. Wavelets have also been used in such a context by Jewell (2001) to quantify the predicted level of non-Gaussian features in the IRAS maps. Additionally, the wavelet based non-Gaussian analysis has also been applied to the COBE-DMR maps.

Different decomposition schemes and wavelet bases can be used for the non-Gaussian studies. In the following, we use a bi-orthogonal wavelet basis and a dyadic decomposition scheme. This choice has been first motivated in Forni & Aghanim (1999) and Aghanim & Forni (1999) by the fact that it is the best scheme in the context of statistical analysis of CMB signals. It is indeed optimal for statistics since it gives, at each scale, the maximum number of significant coefficients. In addition, it naturally allows us to benefit from spatial correlations in the signal at each scale. The better performances of the bi-orthogonal dyadic wavelet decomposition were confirmed by Barreiro & Hobson (2001), and also more recently by Starck et al. (2003), in a comparison not only with the “à trous” but also with the ridgelet decompositions.

We now focus on the Fourier based analysis. The interest in using higher order correlation functions to study non-Gaussianity dates back many years (Luo 1994a; Jaffe 1994; Heavens 1998). Indeed, the first detection of a non-Gaussian contribution in the CMB was due to a bispectrum analysis of the COBE-DMR data by Ferreira et al. (1998), but a later study by Banday et al. (2000) showed that this was due to a weak systematic effect.

Numerous works deal with the construction of ideal higher order statistical estimators both in spherical and flat space as well as with their application to real data (CMB and large-scale

structure survey data). In the CMB context, research focused on the two first higher order correlation functions in Fourier space, namely the bispectrum (see Santos et al. 2003 and Komatsu et al. 2003, and citations therein), and its 4-point equivalent, the trispectrum (see Hu 2001; Kunz et al. 2001; Cooray & Kesden 2003). An important advantage of n -point functions over other non-Gaussian statistics such as wavelets or Minkowski functionals is that they are easier to predict for inflation but also for secondary sources. This makes them a very powerful test, explaining their interest for the scientific community.

Indeed, the Boltzmann equation, which describes the time evolution of the perturbations in the cosmic fluid, does not mix different Fourier modes. The structure of linear perturbations is therefore generally simple in Fourier space. Furthermore, the projection of the CMB photons onto the sky sphere is simple as well, with the square of the spherical Bessel functions coupling the Fourier mode k and the angular scale, or more directly the multipole ℓ , on the sphere. The success of studying the angular power spectrum C_ℓ lies in that much of the initial conditions is preserved throughout the evolution. Higher order correlation functions can be treated in much the same way and allow for the use of already existing techniques. It is therefore feasible to predict theoretically the expected contributions to non-Gaussian signatures from different sources. This allows us on the one hand to place limits on sources of non-Gaussian features if none is detected, and on the other hand might enable us to solve the inverse problem, namely identifying the origin of the non-Gaussianity, if any is found.

In this work, we concentrate on the flat space approach. We use a normalised bispectrum probing all the possible triangle configurations which exist in a homogeneous and isotropic universe, and a normalised diagonal as well as nearly-diagonal trispectrum which depends on the side and the diagonal of the (nearly) trapezoidal configuration. These are supposed to give us information on the scale dependence of any non-Gaussian signal, but contrary to the wavelets, no spatial position information is retained.

We will start in the next section by presenting the data sets used for the comparison. In Sect. 3, we examine the estimators of the non-Gaussian signatures. The statistical analysis and the results are presented in Sect. 4. We then end with our main conclusions.

2. Data sets

We test the statistical methods to detect non-Gaussian signals on three different data sets chosen so that they are representative of many astrophysical situations. It is beyond the scope of the present study to characterise the astrophysical processes represented by the maps. The three sets have rather to be considered as test cases used in order to insure that the non-Gaussian detection is neither specific to one peculiar type of non-Gaussian signatures, nor due to one particular detection method. Additionally, the combination of the different detection techniques on the different sets of data allows us to compare the relative sensitivities of the methods on an objective basis.

In practise, many of the astrophysical situations can be roughly classified into the following three different types of signals: i) spherically shaped structures standing for compact astrophysical sources or beam-convolved point sources (e.g. galaxies, galaxy clusters) that we refer to as the point sources, ii) strongly anisotropic structures that represent filaments and elongated structures (e.g. interstellar clouds) that we refer to as the filaments, and iii) non-linear couplings leading to non-Gaussian signatures, referred to as the χ^2 (or χ -squared) map, as we use the superposition of a Gaussian random field and its square.

In order to characterise the non-Gaussian signatures exhibited by all these signals, the maps are compared to a set of 99 Gaussian realisations having the same power spectrum, referred to as the Gaussian reference set. Therefore, the only difference between Gaussian and non-Gaussian sets is due to the statistical nature of the two processes. All the maps (Gaussian and non-Gaussian) are composed of 500×500 pixels of 1.5 arcmin aside.

2.1. Filaments

The set of maps for the filamentary structures is a selection of 28 IRAS maps which represent the galactic dust emission at high latitudes. These maps were chosen from the IRAS whole sky data base on the basis of two characteristics: firstly their visual aspect and secondly their power spectrum. The selected maps exhibit large and bright elongated structures, i.e. filaments (Fig. 1, upper middle panel), and have a low amount of point sources. We computed the power spectra of these maps and we chose those showing power spectra with similar shapes regardless of their amplitudes. We then rescaled the initial IRAS maps to a common amplitude. This allows us at the end to actually focus on the higher order statistics of the maps. Figure 2, lower panel, shows the power spectrum of the filaments. Thanks to this rescaling, we can consider the 28 modified IRAS maps as statistical realisations of the same highly non-Gaussian process. This data set has a skewness (third moment) of 0.89 ± 0.34 (1σ), and an excess kurtosis (fourth moment) is 2.63 ± 2.42 . The Gaussian reference maps (one example is given Fig. 1, lower middle panel) have a skewness of -0.01 ± 0.17 and an excess kurtosis of -0.11 ± 0.19 . The large fluctuations of the skewness and excess kurtosis (also present in the Gaussian maps) arise due to the high power on large scales associated with the large structures in the IRAS maps. Hence, even the maps produced using a Gaussian random process could be easily mistaken as being non-Gaussian, proving the necessity of comparing a given test map with a set of Gaussian reference maps with the same power spectrum, rather than relying on a theoretical prediction of the Gaussian bounds. For a discussion of the Gaussian reference maps, see Sect. 2.4.

2.2. Point source maps

The second data set is referred to as the point sources. It is constituted of 50 simulated maps which consist of a distribution of

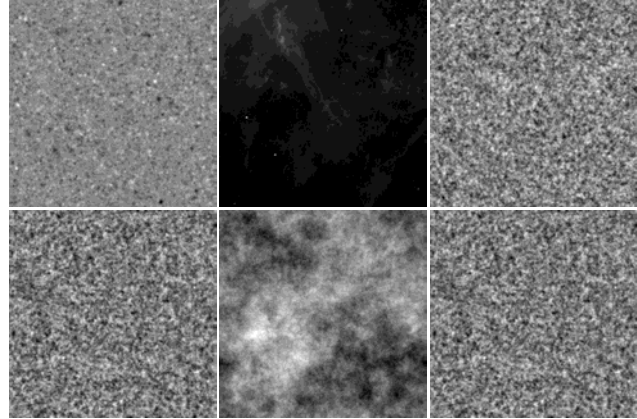


Fig. 1. Representative maps of the non-Gaussian signals and of one of their associated Gaussian realisations with the same power spectrum. Upper and lower left panels represent respectively a point source map and one of its Gaussian counterparts. The upper and lower middle panels are for the filaments and an associated Gaussian realisation. The upper and lower right panels represent the χ^2 map and a Gaussian field with the same power spectrum.

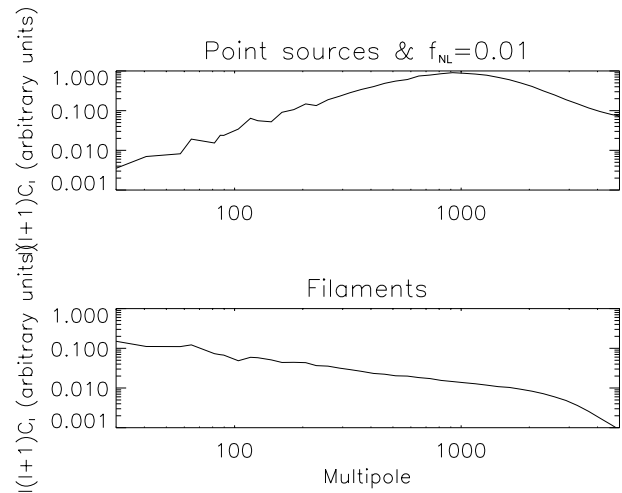


Fig. 2. The power spectra of the studied signals in arbitrary units. The upper panel shows the power spectrum of both the point sources and the χ^2 maps. The lower panel represents the power spectrum of the filaments.

Gaussian shaped sources having different sizes and amplitudes. They are randomly distributed on the map and have positive and negative signs (see Fig. 1, left upper panel). This signal is aimed at reproducing the typical situation of a crowded field of 12.5 square degrees containing $\approx 10^7$ sources. The field therefore exhibits obvious confusion effects. All the simulated maps have the same bell-shaped power spectrum chosen as an input (Fig. 2, upper panel), and exhibit a non-Gaussian signal. This non-Gaussian data set has a skewness of -0.160 ± 0.078 and an excess kurtosis of 2.19 ± 0.32 . A Gaussian reference set of maps with the same power spectrum is simulated (Sect. 2.4, Fig. 1, left lower panel). The corresponding Gaussian maps have a skewness of -0.003 ± 0.022 and an excess kurtosis of -0.005 ± 0.036 . The point source maps are hence clearly marked as being non-Gaussian by their excess kurtosis.

2.3. χ^2 -squared maps

The two previously described types of non-Gaussian signals are ideal to model astrophysical induced non-linearities due to foregrounds and/or secondary effects. However in a wider context, we can expect the existence of primordial sources of non-Gaussian signatures. A way of modelling some of these signatures is by introducing a non-linear coupling in an originally Gaussian distributed perturbation field (Coles & Barrow 1987; Komatsu & Spergel 2001; Acquaviva et al. 2002; Bartolo et al. 2002). The simplest weak non-linear coupling is given by $\chi(\mathbf{x}) = \chi_L(\mathbf{x}) + f_{\text{NL}}(\chi_L^2(\mathbf{x}) - \langle \chi_L^2(\mathbf{x}) \rangle)$, where χ_L denotes the original linear Gaussian field. The non-Gaussian signature introduced by the coupling is quantified by the so-called non-linear coupling constant f_{NL} (note that $\langle \chi(\mathbf{x}) \rangle = 0$).

To generate these χ^2 maps we use a method similar to the one followed to create a Gaussian distributed field (see Sect. 2.4). The non-Gaussian character is introduced by adding to the white noise field its squared minus its squared average weighted by f_{NL} . When multiplying the non-linear field in Fourier space with the desired power spectrum, a normalisation by $1 + 2f_{\text{NL}}^2$ is needed in order to recover the power spectrum from the final map. In our approach, f_{NL} quantifies the amount of the χ^2 type contribution in the Gaussian map.

We compute two sets of 50 maps for $f_{\text{NL}} = 0.01$ and 0.1 in order to test the sensitivity of the statistical methods to the amount of non-Gaussian signal introduced in the Gaussian field. For illustration purposes, we show in Fig. 1 right upper and lower panels a χ^2 map for $f_{\text{NL}} = 0.01$ and one associated Gaussian realisation. The power spectrum of these maps was chosen arbitrarily to be the same as for the point source maps. As mentioned before, these maps are not meant to reproduce accurately the physical processes – to simulate a “real” CMB map with a primordial χ^2 contribution we would need to integrate over the radiation transfer function. Nevertheless, to relate the order of magnitude of our numbers to the ones found in the literature, we note that they are rescaled by approximately a factor of $\Phi \sim \Delta T/T \sim 10^{-5}$ so that a value of $f_{\text{NL}} = 0.01$ here corresponds to about $f_{\text{NL}} \approx 1000$ elsewhere (in reality a bit less, since e.g. on large scales $\Delta T/T \approx \Phi/3$). The χ^2 -squared maps with $f_{\text{NL}} = 0.01$ have a skewness of 0.009 ± 0.019 and an excess kurtosis of 0.002 ± 0.031 , both of which are consistent with zero. The maps with $f_{\text{NL}} = 0.1$ on the other hand have a skewness of 0.140 ± 0.024 and an excess kurtosis of 0.037 ± 0.036 . The Gaussian reference set is the same as for the point source maps, see Sect. 2.2.

2.4. Gaussian realisations

In the process of investigating the statistical character of non-Gaussian signals, as we always deal with a finite ensemble of maps, there can be substantial fluctuations in the results (see for example the IRAS case, Sect. 2.1). Furthermore, although not important in our case but rather when analysing experimental data, often a “Gaussian” map is not created directly from a pure Gaussian random process, but has super-imposed known systematic effects (which would result in spurious non-Gaussian features). In general, the output of an estimator applied to a test-map is therefore not compared to a theoretical result but to the

corresponding output obtained from a set of Gaussian reference maps (with any known systematic effects one may need to add). Any detection of non-Gaussian signatures can then be reliably quantified either by comparing these two sets (Gaussian and non-Gaussian) of results if there are numerous non-Gaussian maps or by computing the probability that the non-Gaussian result belongs to the Gaussian distribution if there is only one (or very few) non-Gaussian map to study. We discuss this procedure in Sect. 4.1 in more detail.

We generate two sets of Gaussian distributed fields with the power spectrum of the corresponding non-Gaussian set. The first one is the aforementioned reference set. The second one (called the Gaussian counterpart set) is strictly speaking redundant, but is used to illustrate the fluctuations arising from finite ensembles, and the presence of low-probability results which appear even when comparing Gaussian maps with each other if many different tests are applied.

The simplest standard method (Peacock 1999) is to create a spatial array of white noise using a random number generator with zero mean and unit variance. We can then give this Gaussian field the desired power spectrum by multiplying it in Fourier space with the square root of that power spectrum, the one of the non-Gaussian set in our case. Using this procedure, we compute one set of 149 Gaussian maps (reference set and counterparts) with the same power spectrum as the 50 point-source maps, one set of 127 Gaussian maps (reference set and counterparts) with the same power spectrum as the 28 IRAS modified maps. We arbitrarily choose the power spectrum of the point source maps for the χ^2 maps and hence use the same set of Gaussian realisations. We show in Fig. 1 (lower panels) one representative Gaussian realisation for each data set with the same spectrum as the non-Gaussian map. The skewness and the excess kurtosis of all the Gaussian reference sets and counterparts are expected to be zero. However, in practice they have a finite scatter. The lower limit for the standard deviation of the skewness is given for a normal distribution with unit variance by $\sqrt{15/N^2}$, or about 0.0077 in the case of $N^2 = 500^2$ independent values per map. The expected standard deviation for the excess kurtosis, in the same idealised case, is $\sqrt{96/N^2}$ or 0.020. One should note however that the scatter of higher order moments is much larger in realistic cases and is strongly susceptible to the details of the random process (see Sects. 2.1, 2.2 and 2.3 for the actual numbers for the Gaussian reference sets).

3. Estimators of the non-Gaussian signatures

We examine two large families of estimators for non-Gaussian signatures. Both are based on dual space analysis. On the one hand, we focus on methods which are completely defined in Fourier space (namely the bi- and trispectrum). On the other hand, we study estimators in the wavelet space (namely third and fourth moments of the wavelet coefficients) in which signals are located both in pixel and in frequency space. It is worth noting that the skewness (third moment) and excess kurtosis (fourth moment) of the wavelet coefficients are quite similar to the bi- and trispectrum respectively, in Fourier space.

Additionally, we compute the cumulative probability function (CPF) of the pixel distribution. This latter is also one of the Minkowski functionals, often called \mathcal{A} , the surface of the excursion set at a given amplitude. As the CPF is a less powerful non-Gaussian estimator, in the sense that it does not give information on the scales nor on the physical location of any detection, we intend to use it only as a baseline for the detection of non-Gaussian signatures on a given map.

As discussed above, we analyse a certain number N_{NG} of non-Gaussian as well as Gaussian maps with the same power spectrum and compare their properties to a reference set of 99 Gaussian realisations, also with the same power spectrum. This section describes the statistical estimators we use for our analysis. For a discussion of the tools used to interpret the results, see Sect. 4.1.

3.1. Pixel distribution function in real space

One of the easiest and most direct tests of the Gaussian hypothesis just estimates the cumulative probability function (CPF) from the ensemble of pixels N_{tot} . To this end, we set

$$P(< x) = N[\text{pixels with values} < x]/N_{\text{tot}}. \quad (1)$$

The two CPFs (from the Gaussian and non-Gaussian processes) can then be compared with statistical methods detailed in Sect. 4.1.

Power spectra with steep slopes (like the ones used here) show strong variations of the signal associated with very small variations in scale. This effect can strongly amplify any kind of fluctuations, in particular it can amplify the statistical fluctuations in Gaussian maps leading to spurious detections of non-Gaussian signatures (see e.g. Aghanim & Forni 1999). As a result, even the comparison of two Gaussian sets through the CPFs shows a significant departure from Gaussianity. In order to avoid these spurious detections of non-Gaussianity, we chose to first “whiten” the maps, and then compute the CPFs and perform the statistical comparison. The whitening procedure is done by deconvolving the maps with the power spectrum measured directly from, and averaged over, the data. The process of whitening can potentially weaken the test by making the non-Gaussian maps more Gaussian. However, this cannot be avoided since a test which detects spurious non-Gaussian signals in Gaussian maps is not acceptable.

Due to its simplicity and its inherent non-locality (the CPF does not test the relative position or configuration of the fluctuations, as the location of the pixels in the map is not taken into account), and as stated previously, we use the CPF method as a baseline for the comparison between the non-Gaussian methods. It should be stressed clearly that this test can only detect non-Gaussian signatures but does not give any further information about their location or scale dependence. It can therefore only very weakly distinguish between different non-Gaussian contributions.

3.2. Wavelet space analysis

The principle behind the wavelet transform (Grossman & Morlet 1984; Daubechies 1988; Mallat 1989) is to hierarchically decompose an input signal into a series of successively

lower resolution reference signals and associated detail signals. At each decomposition level, j , the reference signal has a resolution reduced by a factor of 2^j with respect to the original signal. Together with its respective detail signal, each scale contains the information needed to reconstruct the reference signal at the next higher resolution level.

The wavelet analysis can be considered as a series of band-pass filters. It can thus be viewed as the decomposition of the signal in a set of independent, spatially oriented frequency channels. Using the orthogonality properties, a function in this decomposition can be completely characterised by the wavelet basis and the wavelet coefficients.

The multi-level wavelet transform (analysis stage) decomposes the signal into sets of different frequency bands by iterative application of a pair of Quadrature Mirror Filters (QMF). A scaling function and a wavelet function are associated with this analysis filter bank. The continuous scaling function $\phi_A(x)$ satisfies the following two-scale equation:

$$\phi_A(x) = \sqrt{2} \sum_n h_0(n) \phi_A(2x - n), \quad (2)$$

where h_0 is the low-pass QMF. The continuous wavelet $\psi_A(x)$ is defined in terms of the scaling function and the high-pass QMF h_1 through:

$$\psi_A(x) = \sqrt{2} \sum_n h_1(n) \phi_A(2x - n). \quad (3)$$

The same relations apply for the inverse transform (synthesis stage) but, generally, different scaling and wavelet functions ($\phi_S(x)$ and $\psi_S(x)$) are associated with this stage:

$$\phi_S(x) = \sqrt{2} \sum_n g_0(n) \phi_S(2x - n), \quad (4)$$

$$\psi_S(x) = \sqrt{2} \sum_n g_1(n) \phi_S(2x - n). \quad (5)$$

Equations (2) and (4) converge to compactly supported basis functions when

$$\sum_n h_0(n) = \sum_n g_0(n) = \sqrt{2}. \quad (6)$$

The system is said to be bi-orthogonal if the following conditions are satisfied:

$$\int_R \phi_A(x) \phi_S(x - k) dx = \delta(k) \quad (7)$$

$$\int_R \phi_A(x) \psi_S(x - k) dx = 0 \quad (8)$$

$$\int_R \phi_S(x) \psi_A(x - k) dx = 0. \quad (9)$$

Cohen et al. (1990) and Vetterli & Herley (1992) give a complete treatment of the relationship between the filter coefficients and the scaling functions.

The wavelet functions are quite localised in space, and simultaneously they are also quite localised in frequency. Therefore, this approach is an elegant and powerful tool for image analysis, because the features of interest in an image are

present at different characteristic scales. Consequently, different wavelet transforms have been studied such as the “à trous” algorithm (Starck et al. 1998) that decomposes a $N \times N$ image I as a superposition of the form

$$I(x, y) = c_J(x, y) + \sum_{j=1}^J w_j(x, y), \quad (10)$$

where c_J is a coarse or smooth version of the original image I and w_j represents the details of I at scale 2^{-j} , and the dyadic wavelet transform (Mallat 1998) that decomposes the signal s in a series of the form:

$$s(l) = \sum_k c_{J,k}(\phi_A)_{J,l}(k) + \sum_k \sum_{j=1}^J (\psi_A)_{j,l}(k) w_{j,k} \quad (11)$$

where J is the number of decomposition levels, $w_{j,k}$ the wavelet (or detail) coefficients at position k and scale j (the indexing is such that $j = 1$ corresponds to the finest scale, i.e. highest frequencies), and c_J is again the coarse or smooth version of the original signal s .

In the present study and following Forni & Aghanim (1999), we choose among all the possible bases and decomposition schemes the bi-orthogonal wavelet basis and the dyadic decomposition. We have chosen to perform a six level ($J = 6$) dyadic decomposition of our data. In practice, a dyadic decomposition refers to a transform in which only the reference sub-band is decomposed at each level. In this case, the analysis stage is applied in both directions of the image at each decomposition level. The total number of sub-bands after J levels of decomposition is then $3J + 1$. This decomposition gives as a result the details for the studied signal in both directions. At each level, we therefore end up with 3 sub-bands that we refer to as the horizontal, vertical and diagonal details, plus the smoothed signal. This kind of decomposition furthermore allows us to benefit from correlations between the two directions at each level, and also from the maximum number of coefficients, which is crucial for statistical analysis. The linear transformation properties of Gaussian variables preserve the statistical character making the wavelet coefficients of a Gaussian process being Gaussian distributed. Conversely, any non-Gaussian signal will exhibit a non-Gaussian distribution of its wavelet coefficients at least at some decomposition scales. In addition, the multi-scale wavelet analysis allows us to associate the statistical signatures with the spatial features that have caused them. However, we do not investigate the latter property in the present study.

3.3. Fourier space analysis

We now describe in some detail the Fourier space methods chosen for this comparison. In Fourier space, scalar functions on the sky sphere, such as the CMB temperature fluctuations, are usually expressed as the coefficients $a_{\ell m}$ of an expansion in spherical harmonics. For small patches, we can instead approximate the sphere by a flat surface. This makes it possible to use a fast Fourier transform to compute the coefficients. In this case, the transformations between pixel space (the original

map $T(x)$) and Fourier space are given by

$$a(\mathbf{k}) = \int d^2x T(x) e^{2\pi i \mathbf{k}x} \rightarrow \sum_x T(x) e^{2\pi i \mathbf{k}x/N^2} (\Delta x)^2 \quad (12)$$

$$T(x) = \int d^2k a(\mathbf{k}) e^{-2\pi i \mathbf{k}x} \rightarrow \frac{1}{N^2} \sum_k a(\mathbf{k}) e^{-2\pi i \mathbf{k}x/N^2} (\Delta k)^2. \quad (13)$$

N^2 is the number of pixels per map. The flat space pixel size is determined from the angular pixel size θ (given in arcmin) via $\Delta x = 2\pi\theta/(360 \times 60)$. The pixel size in Fourier space is then $\Delta k = 1/\Delta x$ and the angular scale in Fourier space is $\ell = 2\pi k$.

The power spectrum of the temperature distribution is the two point function,

$$C(k) = \langle a(\mathbf{k})a(-\mathbf{k}) \rangle \approx \int d\varphi a(k, \varphi) a(k, -\varphi). \quad (14)$$

The last correspondence is due to the statistical isotropy of the temperature field on the sky sphere, which allows us to replace the ensemble average with an average over directions for a given mode.

For a Gaussian random field, all information is contained in the power spectrum. All higher order n -point functions can be derived from it. All functions with n odd vanish, and the even n ones are found via Wick expansion. As an example, the four point function is thus found to be $\langle a(k_1)a(k_2)a(k_3)a(k_4) \rangle = \langle a(k_1)a(k_2) \rangle \langle a(k_3)a(k_4) \rangle + \langle a(k_1)a(k_3) \rangle \langle a(k_2)a(k_4) \rangle + \langle a(k_1)a(k_4) \rangle \langle a(k_2)a(k_3) \rangle$, and so on.

The direct computation of higher order functions ($n > 2$) for large maps can be very slow. It generically scales as N_{pix}^{n-1} . In the spherical case, a faster approach has been developed over the last years (Spergel & Goldberg 1999; Hu 2001; De Troia et al. 2003), by creating maps which contain only one scale ℓ each. We can use the same approach also in flat space, defining the scale maps as

$$T_\ell(x) = \frac{1}{N^2} \sum_k W_\ell(|\mathbf{k}|) a(\mathbf{k}) e^{-2\pi i \mathbf{k}x/N^2} (\Delta k)^2. \quad (15)$$

The window functions W_ℓ serve to select the scale, generally we will use $W_\ell(k) = 1$ if k is in the band ℓ and 0 otherwise. Other choices are clearly possible.

Although the formulation of the scale map method is more elegant in spherical space, the flat space approach has the advantage of using only sums, multiplications and fast Fourier transforms of the map, rendering it very quick and efficient.

With this choice of scale maps, we can compute the power spectrum via

$$\sum_x T_\ell(x)^2 (\Delta x)^2 \sim \int dk d\varphi k W_\ell(k) a(k, \varphi) a(k, -\varphi) \quad (16)$$

which contains an additional weight k compared to Eq. (14). In the spherical case, we find instead a Wigner 3J symbol which has to be taken care of by the normalisation. This corresponds in the flat space case to an infinitely narrow bandwidth (i.e. window functions $W_\ell \propto \delta(2\pi k - \ell)$). While a finite bandwidth

will introduce a bias in the result, for sufficiently narrow bandwidths k is approximately constant within the band and just provides an offset which can also be taken care of via an appropriate normalisation; in practice we just divide by the number of pixels per band. Tests show that for a bandwidth of two pixels we do not see any differences from Eq. (14) even for rapidly varying power spectra. Similar normalisations will have to be performed for the higher order correlation functions.

The bispectrum

The bispectrum is the three point function in Fourier space. In the flat space approximation, it is given by a triangle configuration,

$$B_{\ell_1 \ell_2 \ell_3} = \langle a(\mathbf{k}_1)a(\mathbf{k}_2)a(\mathbf{k}_3) \rangle \delta(\mathbf{k}_1 + \mathbf{k}_2 + \mathbf{k}_3) \quad (17)$$

where the δ function arises due to statistical isotropy (and all other configurations should vanish).

The above mentioned method of scale maps can be directly extended to higher moments. For the bispectrum, we compute

$$\sum_{\mathbf{x}} T_{\ell_1}(\mathbf{x})T_{\ell_2}(\mathbf{x})T_{\ell_3}(\mathbf{x})(\Delta x)^2 = \frac{1}{N^4} \sum_{\mathbf{k}_1 \mathbf{k}_2 \mathbf{k}_3} a(\mathbf{k}_1)a(\mathbf{k}_2)a(\mathbf{k}_3) \times W_{\ell_1}(k_1)W_{\ell_2}(k_2)W_{\ell_3}(k_3)(\Delta k)^6 \delta(k_1 + k_2 + k_3). \quad (18)$$

Here, we normalised the δ symbol so that $\delta(k=0) = 1/(\Delta k)^2$.

Again we use the approximation of narrow bands to derive the normalisation. We assume that the bispectrum does not vary strongly within a given band. Then the normalisation which needs to be divided out is given by

$$N(\ell_1, \ell_2, \ell_3) = \sum_{\mathbf{k}, \mathbf{q}} W_{\ell_1}(|\mathbf{k}|)W_{\ell_2}(|\mathbf{q}|)W_{\ell_3}(|\mathbf{k} + \mathbf{q}|), \quad (19)$$

which we sum up using our choice of scale window functions. Since this function is geometrical in nature and independent of the actual map in question, it needs to be computed only once. This is again just the number of configurations which contribute to a given (ℓ_1, ℓ_2, ℓ_3) triplet.

The variance of this estimator for a Gaussian random field is then found to be $\sigma_B^2 = 6C_{\ell_1}C_{\ell_2}C_{\ell_3}/N(\ell_1, \ell_2, \ell_3)$ (for our W_i which verify $W_i^2(\mathbf{k}) = W_i(\mathbf{k})$).

We will in general divide out the dependence of the bispectrum on the power spectrum, and we will do the same for the trispectrum. This C_ℓ normalised estimator, $B_{\ell_1 \ell_2 \ell_3} / \{C_{\ell_1}C_{\ell_2}C_{\ell_3}\}^{1/2}$ has comparable properties to the unnormalised one, but is more robust with respect to wrong estimations of the power spectrum. Komatsu et al. (2002) even found it to have a slightly lower variance.

The trispectrum

The trispectrum, the four point function, is slightly more complicated. Statistical isotropy implies again a δ -function over the four momenta, so that we can visualise it as a quadrilateral with sides ℓ_1, ℓ_2, ℓ_3 and ℓ_4 , and we can additionally specify (within limits) the length of one of the diagonals, a . This additional degree of freedom has to be taken into account when constructing an estimator. To this end, we fix a diagonal \mathbf{a} with length

$|\mathbf{a}| = a$. We then decompose the full trispectrum into two triangles, averaged over all directions of \mathbf{a} :

$$T_{\ell_1, \ell_2, \ell_3, \ell_4}^a = \sum_a \left(\tau_a^{\ell_1, \ell_2^*} \right) \tau_a^{\ell_3, \ell_4} W_a(|\mathbf{a}|)(\Delta k)^2 + \text{permut.} \quad (20)$$

The sub-estimators $\tau_a^{\ell_i, \ell_j}$ need to be constructed so that one side is given by \mathbf{a} and that the other sides have the lengths indicated, e.g. ℓ_i and ℓ_j . This defines the triangle completely. A possibility for $\tau_a^{\ell_1, \ell_2}$ is to use the Fourier transform of $T_{\ell_1} \cdot T_{\ell_2}$,

$$\tau_a^{\ell_1, \ell_2} = \sum_{\mathbf{x}} T_{\ell_1}(\mathbf{x})T_{\ell_2}(\mathbf{x})e^{2\pi i \mathbf{a} \cdot \mathbf{x} / N^2} (\Delta x)^2. \quad (21)$$

Then, the integral in the definition of the T_ℓ (see Eq. (15)) over the exponentials leads to $\delta(\mathbf{k}_1 + \mathbf{k}_2 - \mathbf{a})\delta(\mathbf{k}_3 + \mathbf{k}_4 + \mathbf{a})$ and ensures the correct geometric structure.

In this study, we are not going to compute all possible trispectra. Instead, we are going to concentrate on two simpler cases. The first one is the case $\ell_1 = \ell_2 = \ell_3 = \ell_4$,

$$T_{\ell, a}^{(0)} \equiv T_{\ell, \ell, \ell, \ell}^a. \quad (22)$$

This is quite a natural choice, and due to its symmetry well suited to investigate elongated structures like filaments. Furthermore, one needs only one scale at a given time and does therefore not need to keep all scale maps in memory, greatly decreasing the amount of memory needed by the algorithm. But this ‘‘diagonal’’ estimator does not vanish in the case of a Gaussian random field. It is in general proportional to the square of the power spectrum. Specifically,

$$\langle T_{\ell, a}^{(0)} \rangle_G \propto C_\ell^2 \left(N(\ell)^2 \delta_{a,0} + 2N(\ell, a) \right). \quad (23)$$

Where the normalisation function for our choice of geometry is given by

$$N(\ell, a) = \sum_{\mathbf{k}, \mathbf{a}} W_a(|\mathbf{a}|)W_\ell(|\mathbf{k}|)W_\ell(|\mathbf{a} + \mathbf{k}|), \quad (24)$$

and again needs to be calculated only once. For $a = 0$ it is $N(\ell, a = 0) = N(\ell) = \sum_{\mathbf{k}} W_\ell(|\mathbf{k}|)$, the number of non-zero points in the scale map ℓ (for our choice of scale window functions W). This could hide a real non-Gaussian contribution behind the Gaussian ‘‘noise’’.

It is also noteworthy that in this simple case the diagonal is bounded by $0 \leq a \leq 2\ell$. As the length of the other diagonal b is related to a via $b = \sqrt{(4\ell^2 - a^2)}$, the cases with $a > \sqrt{2}\ell$ are redundant. But since the binning in a and b is different, there is no easy way of actually removing these cases. The canonical scale decomposition in spherical space allows the orthonormalisation procedure described below to remove the superfluous values in that case.

We also use the near-diagonal case

$$T_{\ell, a}^{(+)} \equiv T_{\ell, \ell+1, \ell+2, \ell+3}^a \quad (25)$$

which vanishes (for $a \neq 0$) for a Gaussian random field.

As discussed in Kunz et al. (2001), the trispectrum T_ℓ^a is not unbiased. This does not concern us overly much, since we only want to detect non-Gaussianity in a first step, not estimate its precise amplitude. Nonetheless, as discussed in that

paper, the estimator given here has many superfluous degrees of freedom which can influence the degree of detection, depending on where precisely a signal is located in (ℓ, a) space. We can decrease the number of estimators (and so the superfluous degrees of freedom) as follows: We define for each ℓ the matrix $M_{ab} = \langle T_\ell^a T_\ell^b \rangle_G$, where $\langle \rangle_G$ is the expectation value over a Gaussian ensemble, and diagonalise it, $M_{ab} = \sum_i \lambda^i v_a^i v_b^i$. Since many of the eigenvalues λ^i vanish, we define a smaller ensemble of estimators by the linear combinations $\bar{T}_\ell^i = \sum_a (v_a^i / \sqrt{\lambda^i}) T_\ell^a$ if $\lambda^i \neq 0$.

4. Results

4.1. Statistical analysis

In the last section, we have described in great detail the estimators which we apply to our synthetic data. Before we can discuss the results, it is necessary to explain in which way we quantify statistically the level of any non-Gaussian detection. To this end, let us study each “test” separately. A “test” is *each* bi- or trispectrum configuration (as defined by the triplet or quadruplet of ℓ values), and the skewness or excess kurtosis for the coefficients of each combination of scale and orientation in the wavelet case. Hence, each of our four estimators is made up of many of these tests.

The detection of non-Gaussian signatures can proceed in two rather distinct ways, depending on the kind of observations available. If there are only few data maps available or even one, e.g. in the case of full-sky observations, we apply each test independently to each of the maps of the Gaussian reference set and obtain its distribution. We then apply each test to the non-Gaussian observed map and check if the obtained value falls within a certain desired confidence level (e.g. 99.9%) of the Gaussian distribution.

The second case arises if the data are available as a collection of maps (non-contiguous observations of the sky), e.g. our selected subset of IRAS maps, where each one depicts only a small fraction of the sky. In this case, for each test, using many maps we can also obtain a distribution of values. It is therefore possible to directly compare the two distributions (the Gaussian and the non-Gaussian). In this way the choice of an arbitrary confidence level is avoided. As we use synthetic benchmark maps and can create as many of them as we want, we prefer to use the second approach to test the power of the different methods.

We apply each test independently to the non-Gaussian maps, their Gaussian counterparts as well as to the Gaussian reference set. We therefore end up with three ensembles of values for each test that we compare with one another as explained above.

We illustrate this by plotting in Fig. 3 (upper panel) two distributions of near-diagonal trispectrum values $T_{\ell,a}^{(+)}$ with $(\ell, a) = (1957, 0)$ for both the filament maps and the corresponding Gaussian reference maps. The lower panel shows the two distributions for $(\ell, a) = (110, 400)$. Clearly in the first case the two distributions are very different. It is this difference that needs to be quantified.

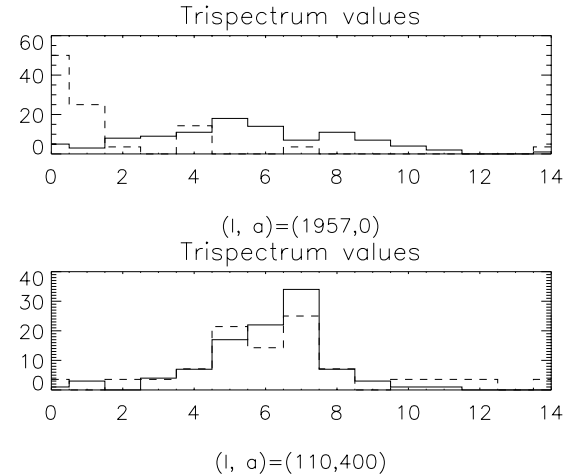


Fig. 3. Two distributions of near diagonal trispectrum values for the filaments: the upper panel is for $(\ell, a) = (1957, 0)$, a highly non-Gaussian case (dashed line), and its corresponding values issued from the Gaussian set of maps (solid line). The lower panel is for $(\ell, a) = (110, 400)$, a nearly Gaussian case for which the two distributions (same line-style as upper panel) are very close to each other.

A standard method to statistically compare two distributions is to perform a Kolmogorov-Smirnov (KS) test. The KS test returns the distance d which is defined as the maximum value of the absolute difference between the two cumulative distribution functions. One can derive the probability P_{KS} that the two data sets are drawn from the same distribution (i.e. the two distributions are statistically the same) using the following equation (Press et al. 1992):

$$P_{KS} = Q_{KS} \left(\left[\sqrt{N_e} + 0.12 + 0.11 / \sqrt{N_e} \right] d \right), \quad (26)$$

with

$$Q_{KS}(x) = 2 \sum_{j=1}^{\infty} (-1)^{j-1} \exp(-2j^2 x^2) \quad (27)$$

where $N_e = \frac{N_1 N_2}{N_1 + N_2}$ is the effective number of data points, given N_1 and N_2 the number elements of the two distributions. In our study, we compare the distribution of values for a non-Gaussian data set to a distribution obtained from the Gaussian reference set. Therefore, the values of the KS probabilities P_{KS} represent a measurement of the confidence level, given by $1 - P_{KS}$, for the detection of the non-Gaussian signatures. For example, if for a certain test $P_{KS} = 10^{-3}$ then this test exhibits non-Gaussian features at a confidence level of 99.9%. The probabilities P_G found by comparing the ensemble of Gaussian counterparts with the Gaussian reference ensemble are uniformly distributed between 0 and 1. This, after all, is the definition of the probability P_{KS} .

If we now move back from a single test to the estimators as a whole, we are confronted with a new problem which is most noticeable in the case of the bispectrum, for example. There, we perform of the order of $n_t \approx 10^5$ tests. Hence, we expect to find some tests (although very few) where even the comparison of two Gaussian ensembles results in a very low probability of order $1/n_t$. This is illustrated e.g. by Fig. 6 where the uniform distribution of the Gaussian probabilities is also clearly visible.

Only a deviation from this behaviour signals a violation of the Gaussian hypothesis. As a corollary, if a single test (a single scale) has a probability $P_{\text{KS}} \ll 1/n_t$, that test alone ensures with near-certainty that the process which created the map is not Gaussian. To avoid any confusion with these small Gaussian probabilities, we state in general both the results of the KS test of non-Gaussian versus Gaussian reference maps as well as the Gaussian counterparts versus Gaussian reference results.

Given the large ensemble of P_{KS} values for the bi- and trispectrum, and knowing their distribution in the Gaussian case (either taking the theoretical uniform distribution or, which is more appropriate, directly the measured values), it is tempting to go one step further and to apply the KS test a second time. This *meta-statistics* then returns one *global meta-probability* for the detection of a non-Gaussian signature by a given method, but neglects many aspects such as correlations between the tests which make up that method. In the case of the bi- and trispectrum, the *meta-statistics* discards the information on the frequency location of the tests and thus weakens the power of the Fourier analysis. In addition, the *meta-statistics* might also degrade our ability to detect the non-Gaussian signatures due to the known limitations of the KS test. Even if, as an example, a few locations have very small probabilities $P_{\text{KS}} \ll 1/n_t$, the *global meta-probability* may be acceptable if those points are not numerous enough. Of course these highly significant values alone would suffice to reject the Gaussian hypothesis. For the wavelet based estimators, we could also perform *meta-statistics*. We would in this case have to create a distribution of KS probabilities for each decomposition scale by comparing several sets (Gaussian versus Gaussian and non-Gaussian versus Gaussian), and then apply the KS test a second time. But we refrain from applying this method here as there are not as many test values as there are in the case of the Fourier-based estimators.

It is worth noting that the choice of the number of test (non-Gaussian) and reference maps for the first KS test has an important impact on the *meta-statistics*. If the number of maps in the two sets have not enough different prime factors (e.g. 50 and 100), then heavy aliasing can occur since the KS test is only sensitive to the difference in the values of the cumulative distribution functions (see Fig. 4). In this case, only very few distinct differences (and hence KS probabilities) exist, leading to a stepped (or quantised) distribution of the KS probabilities (Fig. 4, solid line). As a consequence, the second KS test gives a spuriously low *global meta-probability* indicating that the signals are statistically quite different, even when comparing Gaussian versus Gaussian maps. To avoid this, we use 50 test maps and 99 reference maps, which largely eliminates the problem (Fig. 4, dashed line).

The KS test performs a global comparison of the distributions. It tends to be more sensitive around the median value of the cumulative distribution function and less sensitive to differences at the extreme ends of the distribution. It is therefore a good test to measure shifts but not so good in finding spreads which might affect the tails of the distribution. As a consequence, if a given distribution in the non-Gaussian case is very different from that of the Gaussian case, but still the majority of its values falls within a given confidence region of the Gaussian

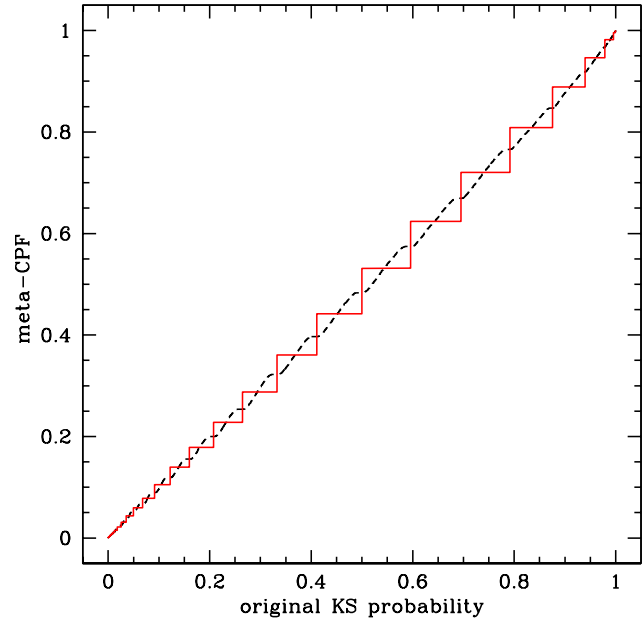


Fig. 4. This figure compares the distribution of KS probabilities of one of the bispectrum coefficients for the case of 50 vs. 100 maps (solid line) and for the case of 50 vs. 99 maps (dashed line). The aliasing problem in the first case is clearly visible; it leads to a heavily stepped and quantised distribution.

distribution (e.g. 99.9%) then the KS test is not optimally efficient to detect the difference between the two distributions and therefore to measure the non-Gaussian signatures. A way of accounting for these differences in the tails of the distribution is to replace the KS distance d by a stabilised or weighted statistics, for example the Andersen-Darling (AD) test or the Kuiper test. In the former test, we derive a distance and no probability is computed. This property makes it vital for the estimation of the non-Gaussian detection level that we actually compare on the one hand Gaussian counterparts and the Gaussian reference set, to on the other hand the non-Gaussian data set and the reference set. We have checked that both the AD and the Kuiper tests give results that are in good agreement with the KS test. In the following, we concentrate onto the KS test, and we present the results for each statistical estimator in terms of the probability that two distributions are identical.

4.2. Results from the cumulative probability function

As mentioned before, our baseline is given by a simple comparison between the CPFs of the non-Gaussian data sets and the corresponding reference set. We use the KS test for this comparison, since it provides us directly with an estimate of the probability. We use the pixels of one map at a time and compare the obtained CPF with the one derived from the Gaussian realisations. We therefore find a distribution of P_{KS} values. Table 1 gives the averaged results obtained in this way, compared to the results from the comparison of the Gaussian counterpart set versus the Gaussian reference set. The maps used for this purpose were deconvolved with the average power spectrum extracted from the comparison set.

Table 1. Test for non-Gaussianity using the CPF for all (whitened) maps. The first line is the average KS probability for the non-Gaussian maps and the second line is the average probability for the Gaussian counterpart set. The χ^2 type maps have a non-linear coupling factor $f_{\text{NL}} = 0.01$.

	Filaments	Point sources	χ^2 maps
P_{KS}	0	0	4.7×10^{-4}
P_{G}	0.73	0.72	0.72

In all cases, the non-Gaussian signature is clearly detected (with the $f_{\text{NL}} = 0.01$ χ^2 type maps being the least non-Gaussian by far), while the Gaussian counterpart maps are consistent with the Gaussian hypothesis. As the point source maps and the χ^2 maps use the same Gaussian reference and counterpart maps, they also share the same Gaussian probability P_{G} . That value might be slightly higher than expected due to the deconvolution which has to use an estimated power spectrum from the data (the true theoretical one being unknown in practice). But in the worst case, we expect this measure to lead to a weaker detection of non-Gaussianity. If we do not deconvolve the maps, we find, $P_{\text{G}} = 10^{-3}$ for the point sources Gaussian reference set versus the Gaussian counterpart set, and the filament case is much worse.

Additionally, we can quantify the sensitivity of this test to the non-Gaussian signatures present in the χ^2 maps. To this end, we form a likelihood estimator $\mathcal{L}[f_{\text{NL}}]$, and find the best-fit parameter f_{NL} by minimising \mathcal{L} . The variation of the recovered f_{NL} for a set of Gaussian maps gives an indication of the sensitivity of the approach. A priori, we could use directly the KS probability as given above for the likelihood function. But, as demonstrated in Santos et al. (2003), it is simpler to use a χ^2 fitting procedure to a signal which can be analytically predicted and in which f_{NL} enters linearly. In this case, we can calculate the best-fit value in a very straightforward way.

The probably simplest signals which can be extracted from the CPF are its moments. As the average vanishes, and as all even moments show only a leading order non-Gaussianity proportional to $f_{\text{NL}}^2 \ll 1$, it is best to use the skewness. To first order in f_{NL} , we find $\langle T^3 \rangle = 6f_{\text{NL}}\sigma^4$, where the standard deviation σ is the one of the original Gaussian map. The one recovered from a non-Gaussian χ^2 type map differs by a term of order f_{NL}^2 which can be neglected. The likelihood is then given by

$$\chi^2[f_{\text{NL}}] = \sum_x \frac{(T(x)^3 - f_{\text{NL}}6\sigma^4)^2}{15\sigma^6}. \quad (28)$$

Since it is again important to use a whitened map we will assume that $\sigma = 1$. We set $\partial\chi^2/\partial f_{\text{NL}} = 0$ and find

$$f_{\text{NL}} = \frac{1}{6N^2} \sum_x T(x)^3. \quad (29)$$

Figure 5 shows the recovered f_{NL} from 1000 maps with Gaussian white noise. Their variance is $\sigma = 8 \cdot 10^{-4}$ and we find for the 50 maps with $f_{\text{NL}} = 0.01$ that $f_{\text{NL}} = 0.0098 \pm 0.0007$.

There is a caveat: In order to extract that value, we needed to know the exact kind of non-Gaussian signal we are dealing

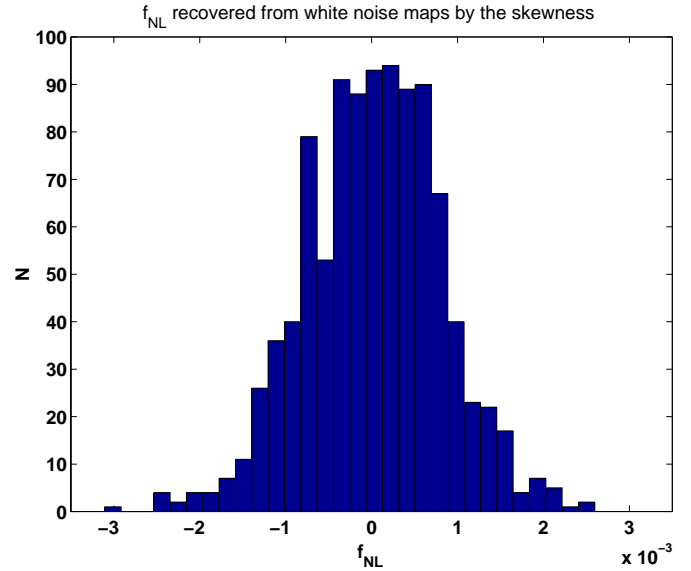


Fig. 5. The values of f_{NL} recovered from the skewness of 1000 maps which contain Gaussian white noise. The variance is $\Delta f_{\text{NL}} = 8 \times 10^{-4}$.

with. However, it is valid to use the present procedure to set limits on the parameter in question if *no* non-Gaussian signal is detected.

4.3. Results from the wavelet decomposition

In order to find the non-Gaussian signatures present in the studied signals, we compute the skewness and excess kurtosis of the wavelet coefficients at each decomposition scale and in each sub-band, i.e. for the three types of details (horizontal, vertical and diagonal). We compute these quantities for both the Gaussian and the non-Gaussian maps and we compare the obtained distributions of skewness and excess kurtosis for the Gaussian and the non-Gaussian processes using the KS test. This comparison allows us to get, for each scale and orientation, the probability that the non-Gaussian process and the Gaussian realisations with the same power spectra have the same distribution.

All the obtained probabilities for the skewness and excess kurtosis are given in the Tables 2, 3 and 4. In these tables and for each type of details, the first set of 2 lines represents P_{KS} for the skewness. The first line is for the non-Gaussian versus the reference set comparison, and the second line is for the Gaussian counterpart versus reference set (G vs. G). The second set of 2 lines represents the P_{KS} for the excess kurtosis. Again, the first line is for the non-Gaussian versus the reference set comparison, and the second for the Gaussian counterpart versus reference set.

The probabilities of the order of, or lower than, 10^{-3} indicating a non-Gaussian detection at a level $>99.9\%$ are all in shaded boxes. The probabilities obtained from the comparison between the Gaussian counterparts and the reference Gaussian realisations (G vs. G) allow us to estimate any possible non-significant detection of non-Gaussian signature, or statistical fluctuation in the Gaussian sets.

Table 2. For the χ^2 maps with $f_{\text{NL}} = 0.01$: the KS probability (for two signals to have identical distributions) for each of the details at all decomposition scales. For each detail, the first two lines are for the skewness of the wavelet coefficients, and the second two lines represent the excess kurtosis. For each pair, the first line stands for the comparison between the 50 non-Gaussian and the 99 reference Gaussian maps, and the second line for the comparison between the 50 Gaussian counterparts and the 99 reference Gaussian maps (G vs. G). All probabilities lower than 10^{-3} are in shaded boxes. Scales 1 to 6 represent respectively the angular scales 3, 6, 12, 24, 48, 96 arcmin.

	Scale 1	Scale 2	Scale 3	Scale 4	Scale 5	Scale 6
Vertical	2.08×10^{-18}	0.226	0.488	0.828	0.158	0.368
G vs. G	0.411	0.450	0.160	0.160	0.791	0.036
	0.488	0.426	0.367	0.426	0.426	0.189
G vs. G	0.332	0.791	0.068	0.940	0.411	0.332
Horizontal	1.97×10^{-17}	0.002	0.828	0.555	0.695	0.625
G vs. G	0.876	0.207	0.940	0.876	0.940	0.332
	0.315	0.0450	0.625	0.764	0.426	0.226
G vs. G	0.264	0.596	0.411	0.940	0.596	0.791
Diagonal	0.001	0.157	0.828	0.368	0.315	0.315
G vs. G	0.791	0.596	0.940	0.695	0.049	0.791
	0.828	0.695	0.930	0.828	0.764	0.963
G vs. G	0.265	0.265	0.876	0.791	0.499	0.596

4.3.1. Third moment of the wavelet coefficients: Skewness

Confirming the CPF results for which there was a clear detection of non-Gaussian signatures in the set of χ^2 maps with a coupling factor $f_{\text{NL}} = 0.1$, the non-Gaussian signatures are very easily detected in the wavelet space. We therefore focus on the χ^2 maps with a coupling factor $f_{\text{NL}} = 0.01$. We summarise the KS probabilities derived from the comparison of the distribution of skewnesses in Table 2, first two lines of each type of details. For these χ^2 maps, the departure from the Gaussian hypothesis is only detected at the first wavelet decomposition scale (i.e. 3 arcmin). Both the vertical and horizontal details appear very sensitive to the non-Gaussian features present in the maps. The non-Gaussian signatures are also detected in the diagonal details, at the first scale, but with a much lower confidence level. From the KS probabilities obtained from the comparison Gaussian counterparts versus Gaussian reference maps (second line of the first set in each detail), it is obvious that the detection of the non-Gaussian signatures is highly significant. It is however worth noting that we detect some non-Gaussian signatures, at 93 to 96% confidence level, due to statistical fluctuations when we compare the Gaussian maps with the reference Gaussian set.

In the case of the filaments (Table 3, first two lines of each type of details), the KS test for the skewness distribution of the non-Gaussian against the Gaussian reference set shows that the non-Gaussian features are detected at all scales (with less confidence at scale 6, i.e. 96 arcmin). The detection takes place for the three types of details. We note that the probability for the non-Gaussian signal to be compatible with a Gaussian process increases for the highest decomposition levels, i.e. the largest angular scales, as it is expected from our studied signal in which the filamentary structures have not increasingly large sizes.

As for the point sources (Table 4, first two lines of each type of details), the non-Gaussian signatures do not show up very significantly (whatever decomposition scale and details).

The obtained probabilities remain always larger than ≈ 0.002 suggesting a non-Gaussian detection at a $\approx 99.8\%$ confidence level at best.

For the filamentary structures as well as for the point sources, the comparison between Gaussian counterparts and Gaussian reference (G vs. G) set shows that we are very much compatible with identity test (processes having the same distribution). The obtained KS probabilities show the high level of significance of the non-Gaussian detection.

4.3.2. Fourth moment of the wavelet coefficients: Excess kurtosis

We now turn to the fourth moment in the wavelet space, i.e. the excess kurtosis of the wavelet coefficients. The results are given by the second sets of two lines in Tables 2, 3 and 4. Again the first line is for the KS probability obtained from the comparison of the non-Gaussian maps with the Gaussian reference set, and the second line stands for the comparison of the Gaussian counterparts versus the reference set (G vs. G).

In the case of the χ^2 maps with $f_{\text{NL}} = 0.01$, the fourth moment do not, as expected, exhibit any departure from the Gaussian hypothesis. This is demonstrated by the large values of the KS probabilities (Table 2, second sets of lines).

The point sources (Table 4, first line of the second set of lines for each detail), exhibit very highly non-Gaussian signatures as shown by the small KS probabilities (always smaller than $\approx 10^{-5}$). Furthermore, the non-Gaussian signatures are present at all decomposition scales and for all the details. We compare the obtained probabilities with those derived from the comparison of the Gaussian counterparts with the Gaussian reference set. We note the high level of significance of the non-Gaussian detections.

The same kind of results (detection of non-Gaussian features at all scales with all details) are obtained for the filaments (Table 3, second sets of lines) for which the probabilities that the non-Gaussian maps are statistically equivalent to

Table 3. For the filaments: the KS probability (for two signals to have identical distributions) for each of the details at all decomposition scales. For each detail, the first two lines are for the skewness of the wavelet coefficients, and the second two lines represent the excess kurtosis. For each pair, the first line stands for the comparison between the 28 non-Gaussian and the 99 reference Gaussian maps, and the second line for the comparison between the 28 Gaussian counterparts and the 99 reference Gaussian maps (G vs. G). All probabilities lower than 10^{-3} are in shaded boxes. Scales 1 to 6 represent respectively the angular scales 3, 6, 12, 24, 48, 96 arcmin.

	Scale 1	Scale 2	Scale 3	Scale 4	Scale 5	Scale 6
Vertical	1.27×10^{-7}	6.54×10^{-15}	1.77×10^{-11}	1.65×10^{-8}	5.25×10^{-8}	0.047
G vs. G	0.743	0.911	0.486	0.879	0.320	0.239
G vs. G	3.3×10^{-20}	3.3×10^{-20}	3.3×10^{-20}	3.3×10^{-20}	1.01×10^{-16}	1.09×10^{-6}
G vs. G	0.379	0.574	0.471	0.996	0.682	0.879
Horizontal	1.77×10^{-11}	1.43×10^{-12}	1.9×10^{-9}	1.77×10^{-11}	9.23×10^{-8}	0.001
G vs. G	0.651	0.788	0.976	0.391	0.515	0.998
G vs. G	3.3×10^{-20}	3.3×10^{-20}	3.3×10^{-20}	3.3×10^{-20}	1.22×10^{-18}	7.68×10^{-9}
G vs. G	0.773	0.066	0.829	0.258	0.088	0.559
Diagonal	5.13×10^{-7}	2.85×10^{-5}	1.65×10^{-8}	0.0004	0.010	0.008
G vs. G	0.682	0.142	0.040	0.651	0.842	0.682
G vs. G	3.3×10^{-20}	3.3×10^{-20}	3.3×10^{-20}	3.3×10^{-20}	3.7×10^{-16}	5.69×10^{-8}
G vs. G	0.636	0.529	0.758	0.816	0.379	0.040

Table 4. For the point sources: the KS probability (for two signals to have identical distributions) for each of the details at all decomposition scales. For each detail, the first two lines are for the skewness of the wavelet coefficients, and the second two lines represent the excess kurtosis. For each pair, the first line stands for the comparison between the 50 non-Gaussian and the 99 reference Gaussian maps, and the second line for the comparison between the 50 Gaussian counterparts and the 99 reference Gaussian maps (G vs. G). All probabilities lower than 10^{-3} are in shaded boxes. Scales 1 to 6 represent respectively the angular scales 3, 6, 12, 24, 48, 96 arcmin.

	Scale 1	Scale 2	Scale 3	Scale 4	Scale 5	Scale 6
Vertical	0.012	0.791	0.002	0.008	0.411	0.791
G vs. G	0.791	0.265	0.122	0.332	0.791	0.160
G vs. G	3.47×10^{-30}	3.47×10^{-30}	3.47×10^{-30}	6.12×10^{-24}	0.001	0.411
G vs. G	0.265	0.876	0.207	0.999	0.499	0.160
Horizontal	0.122	0.695	0.265	0.006	0.265	0.791
G vs. G	0.596	0.411	0.876	0.411	0.499	0.596
G vs. G	3.47×10^{-30}	3.47×10^{-30}	3.47×10^{-30}	2.3×10^{-22}	1.42×10^{-6}	0.068
G vs. G	0.411	0.499	0.122	0.791	0.695	0.596
Diagonal	0.012	0.160	0.596	0.596	0.876	0.332
G vs. G	0.695	0.996	0.940	0.876	0.207	0.160
G vs. G	3.47×10^{-30}	3.47×10^{-30}	1.09×10^{-26}	9.87×10^{-16}	1.02×10^{-7}	0.0004
G vs. G	0.092	0.160	0.876	0.791	0.596	0.499

the Gaussian reference maps are always smaller than 10^{-6} . We have again computed the KS probabilities for the excess kurtosis of the wavelet coefficients from the comparison of Gaussian maps. This comparison shows that the two sets of maps are statistically the same which conversely reinforces the level of significance of the non-Gaussian detection in the filament maps.

4.4. Results from the bispectrum

Similarly to the wavelet coefficients, we compare for each triplet (ℓ_1, ℓ_2, ℓ_3) the distributions of the (normalised) bispectrum values, as described in Sect. 3.3, for the non-Gaussian realisations and for the Gaussian reference set. Hence, we associate to each triplet (ℓ_1, ℓ_2, ℓ_3) two ensembles of bispectrum coefficients – on the one hand 50 or 28 values for the non-Gaussian maps, and on the other hand 99 values for the

Gaussian reference set. Using the KS test, we therefore end up for each triplet with a probability that the signals are drawn from the same process, i.e. that the non-Gaussian maps are compatible with the Gaussian reference set.

For the full bispectrum, we limit ourselves to a bandwidth of four pixels, but probe additionally the diagonal elements with a bandwidth of two pixels. We have tested that using the higher resolution (two pixels bandwidth) for the full bispectrum does not lead to a better detection of the non-Gaussian signal for the χ^2 type maps, and does not improve the variance of the recovered value of f_{NL} (see the following subsection).

For the sake of a clearer visual representation of the results, we choose to show the KS probabilities as a function of the surface and the smallest angle defined by the triplet, rather than as a function of the triplet itself. Note that we are speaking of surfaces and angles in Fourier space.

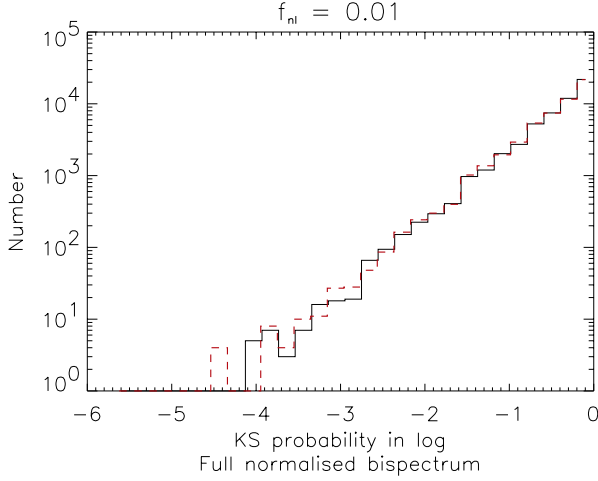


Fig. 6. For the χ^2 maps with non-linear coupling factor $f_{\text{NL}} = 0.01$: distribution of the KS probabilities obtained by i) comparing the full normalised bispectrum estimator of the non-Gaussian maps to the Gaussian reference set (dashed line), and ii) comparing the same quantity for the Gaussian counterparts to the Gaussian reference set (solid line). In the second case, the probabilities are distributed uniformly. The slope is due to the log-log representation we have chosen.

4.4.1. χ^2 maps

We first focus on the case of the non-Gaussian χ^2 maps with a coupling factor of $f_{\text{NL}} = 0.01$. We find, for the full bispectrum, that the probabilities for the non-Gaussian signal to be compatible with its Gaussian reference set are as low as a few times 10^{-6} . However as mentioned in Sect. 4.1 (see also Fig. 6), the comparison of the 50 Gaussian counterpart realisations to the reference set of 99 Gaussian maps gives KS probabilities of the same order, and it is hard to say whether there is a detection of non-Gaussianity or not. If we apply the KS test a second time, now to the two resulting distributions of probabilities, the *global meta-probability* obtained is 4.1×10^{-4} . The bispectrum therefore does indeed detect this type of non-Gaussian signatures.

As the bispectrum shares many properties with the skewness, we would expect it to be rather good at detecting χ^2 type non-Gaussianity. Given the way in which we construct our test maps, the theoretical signal is

$$B_{\ell_1 \ell_2 \ell_3}^{(\text{th})} = 6f_{\text{NL}} \sqrt{C_{\ell_1} C_{\ell_2} C_{\ell_3}}. \quad (30)$$

We can eliminate any dependence on the power spectrum by using the C_ℓ -normalised estimator. The χ^2 likelihood function is then (denoting a triplet (ℓ_1, ℓ_2, ℓ_3) by α) very similar to the one for the CPF, Eq. (28),

$$\chi^2[f_{\text{NL}}] = \sum_{\alpha} \frac{(B_{\alpha}^{(\text{obs})} - 6f_{\text{NL}})^2}{\sigma_{\alpha}^2} \quad (31)$$

and since the dependence of $\partial\chi^2/\partial f_{\text{NL}} = 0$ on f_{NL} is linear we can again solve for it analytically. By using this method, we recover $f_{\text{NL}} = 0.010 \pm 0.002$ and find that the 1000 Gaussian white noise maps have a variance of 0.0023 (see Fig. 7). As mentioned earlier, using a bandwidth of two instead of four does not improve the sensitivity. One should not forget, though,

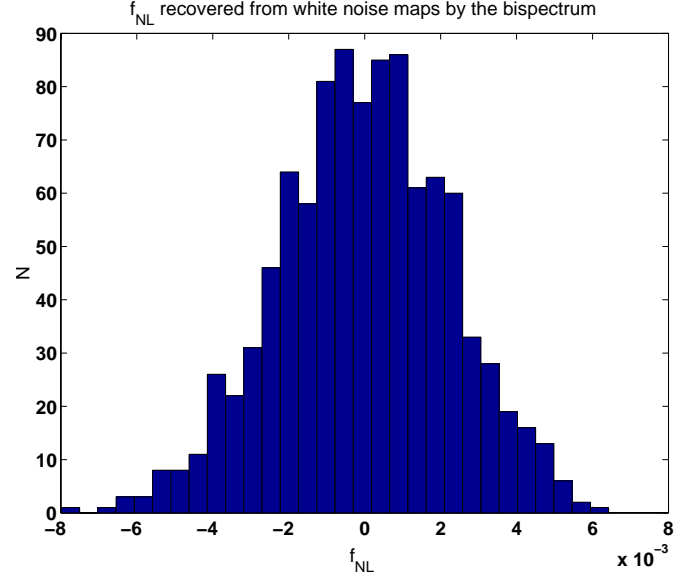


Fig. 7. The values of f_{NL} recovered from the bispectrum of 1000 maps which contain Gaussian white noise. The variance is $\Delta f_{\text{NL}} = 2 \times 10^{-3}$.

that the Fourier space methods are better adapted to spherical spaces, where the scale decomposition is automatic and does not need to be imposed by placing rings on a rectangular grid. Furthermore, the skewness is always just a number, while a realistic model of primary non-Gaussian signatures (taking into account the radiation transfer function) introduces a non-trivial shape and even sign changes into Eq. (30), see e.g. Santos et al. (2003). In the presence of several different kinds of non-Gaussian signatures, the bispectrum should be better at discriminating between them in that case, and also using a lower bandwidth may become useful.

4.4.2. Point sources

In the case of the non-Gaussian maps made of a distribution of point sources, the KS test gives again probabilities down to 10^{-6} for the full bispectrum, apart from a single point with much lower probability ($P_{\text{KS}} \simeq 10^{-9}$). We concentrate onto the full bispectrum tests. We need to compare the obtained KS probabilities with the ones derived from the comparison of 50 Gaussian counterparts versus the reference set. Figure 8 displays the distribution of KS probabilities. We note in particular that the non-Gaussian signal exhibits an excess of low KS probabilities as compared with the probabilities from Gaussian vs. reference set. This difference between the two distributions is confirmed by the *meta-statistics* which gives a probability of 8.6×10^{-4} .

Let us now concentrate onto the KS probabilities that are lower than 10^{-3} . We display in the surface-angle plane the results of the non-Gaussian vs. reference set comparison (Fig. 9, diamonds) and Gaussian counterparts vs. reference set (Fig. 9, asterisks). We notice that for small surfaces (in ℓ space, i.e. Fourier space) the majority of points are associated with the non-Gaussian maps. There are no detections associated with the Gaussian vs. reference set comparison. This is even more obvious when we plot the distribution of surfaces for KS

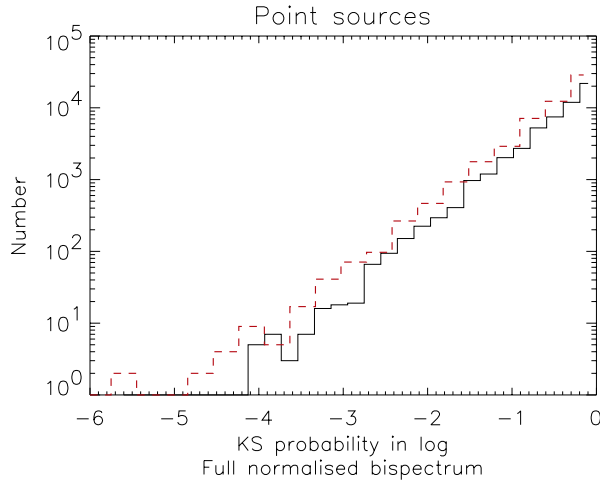


Fig. 8. For the point sources: distribution of the KS probabilities for the full bispectrum. The dashed line represents the results from the comparison of the non-Gaussian maps to the Gaussian reference set. The solid line is for the comparison Gaussian counterparts versus reference set.

probabilities $<10^{-3}$ (Fig. 9 lower panel, histogram of surfaces). The first bin is indeed dominated by the detections from the non-Gaussian versus reference set comparison. The small surfaces in Fourier space are associated with large surfaces in real space ($x \propto 1/\ell$). The result we obtain indicates that we are actually detecting the non-Gaussian signatures associated with the higher amplitude spots in the maps (Fig. 1, upper left panel) that are also spatially more extended and lying on a crowded background of smaller sources. The histogram of angles (Fig. 9, middle panel) in turn does not show any highly significant difference between the non-Gaussian versus reference and Gaussian counterpart versus reference.

4.4.3. Filaments

Our last non-Gaussian data set is constituted of the 28 modified IRAS maps representing the filamentary structures. This process is by far the most non-Gaussian. The KS test between the distribution of the bispectrum values for the 28 non-Gaussian maps and the 99 Gaussian reference maps goes down to 10^{-20} . Similarly to the other processes, we also compare the 28 Gaussian realisations to the reference set in order to estimate the significance of the detections. In the case of the filaments, there is no doubt that the non-Gaussian signatures are detected. This is exhibited (Fig. 10) by the difference in the distribution of KS probabilities obtained when comparing the non-Gaussian maps to the Gaussian reference set (dashed line), and the probabilities resulting from the comparison of the 28 Gaussian realisations versus the Gaussian reference set (solid line). Unsurprisingly, the *meta-statistics* returns a probability of 0 confirming the very high significance of the non-Gaussian detection.

In Fig. 11, we display both the Gaussian vs. Gaussian (gray triangles), and the non-Gaussian vs. Gaussian (black diamonds) points. We note that most of the probabilities in the Gaussian vs. Gaussian case lie above the 10^{-3} limit (horizontal solid line). The non-Gaussian character is very strongly

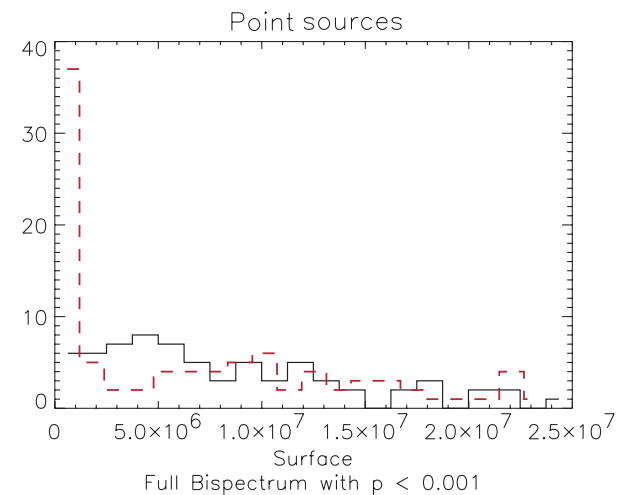
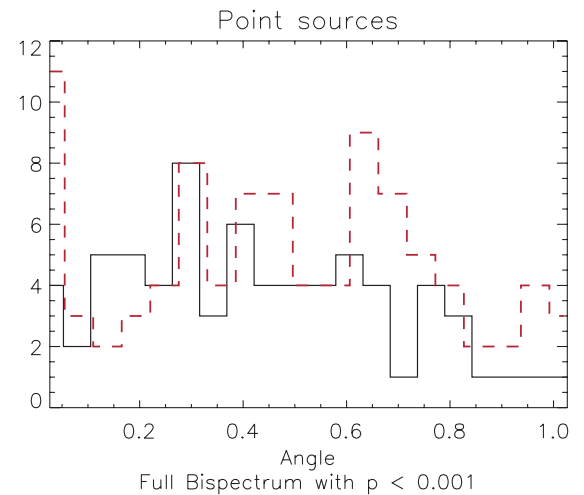
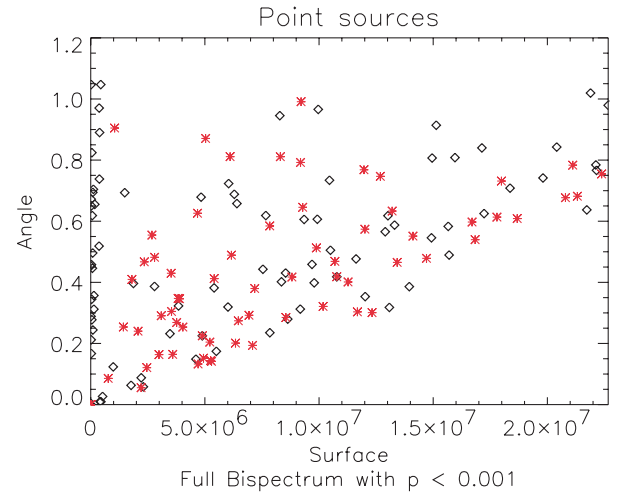


Fig. 9. For the point sources: the KS probabilities lower than 10^{-3} . In the surface-angle plane (upper panel) defined by the triplets in Fourier space, the asterisks are for the comparison Gaussian counterparts versus reference set, and the diamonds are for the comparison non-Gaussian maps versus reference set. The middle panel shows the distribution of angles for the above selected KS probabilities. The lower panel shows the distribution of surfaces for the same selection. The dashed line is for non-Gaussian versus reference set, and the solid line for Gaussian versus reference set.

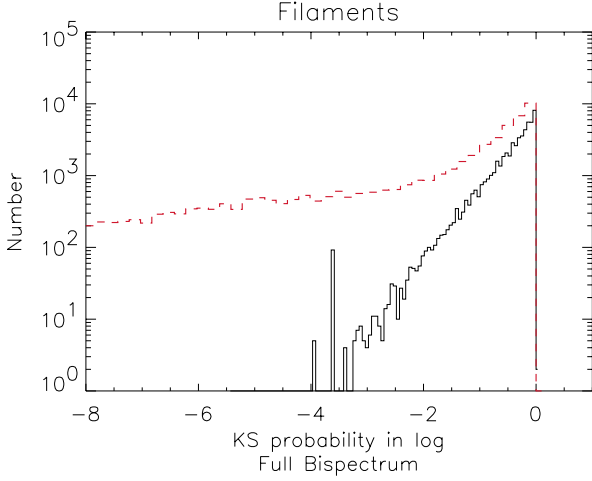


Fig. 10. For the filaments: distribution of the KS probabilities for the full bispectrum. The dashed line represents the results by comparing the non-Gaussian maps to the Gaussian reference set. The solid line is for the comparison Gaussian counterparts versus reference set.

localised in the triplets with small surfaces. The distribution as a function of angle is much more uniform.

If we study the KS probabilities as a function of both angle and surface (see Fig. 12), we find that the non-Gaussian signatures are mainly localised in two distinct “plumes”. The first contains triplets with angles basically no larger than 0.4 radian and surfaces that are as large as 10^7 , while the second, larger plume, covers all angles but only triplets with a slightly smaller surface. The two histograms, in Fig. 12, show the number of triplets within a range of KS probabilities as a function of either surface or smallest angle. They show that the very lowest probabilities (solid line) are associated with the second, larger plume. They are distributed over a wide range of angles, but have all a small surface. The intermediate probabilities are concentrated in triplets with small angles but a wider range of surfaces. These figures show that the bispectrum allows very detailed analysis of the non-Gaussianity present in a data set, if it is detected at a sufficiently high level.

4.5. Results from the trispectrum

Following the same approach as for the bispectrum and as explained in detail in Sect. 4.1, we compare for each pair (ℓ, a) the distribution of the trispectrum values (defined as in Sect. 3.3) for the non-Gaussian set and for its Gaussian reference set.

We present results for the diagonal and the near-diagonal trispectra (respectively $T^{(0)}$ and $T^{(+)}$) for the point sources and the filaments but compare their sensitivities in terms of the non-Gaussian detection on the point source maps only since the non-Gaussian signal is less extreme than in the filaments. For the χ^2 maps we only applied the near-diagonal trispectrum as no detection is expected from the previous results.

As a significance discriminator, we use the equivalent results from the comparison between the set of Gaussian counterpart maps and the Gaussian reference set. We checked that the normalisation of the trispectrum to the power spectrum does not affect the resulting KS probabilities significantly.

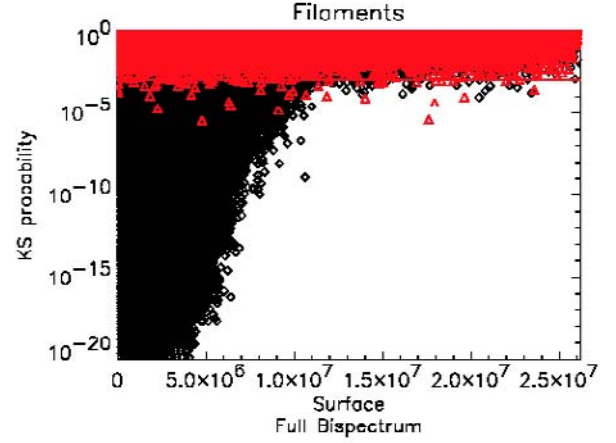


Fig. 11. The filament maps: KS probabilities from the comparison of the full bispectrum as a function of the surface defined by the triplet in Fourier space. Black diamonds represent the results obtained from the comparison non-Gaussian maps versus Gaussian reference set. Gray triangles represent the results obtained from the comparison Gaussian counterparts versus reference set. The solid horizontal line indicates the limit for $P_{KS} = 10^{-3}$.

4.5.1. χ^2 maps

For the $f_{NL} = 0.01$ χ^2 maps and the Gaussian maps, the smallest KS probabilities are a few times 10^{-5} , see Fig. 13. The *meta-statistics* confirms that we do not see any significant deviation from the Gaussian hypothesis: The orthonormalised $T^{(+)}$ estimator leads to a *meta- P_{KS}* = 0.13 for a non-linear coupling constant of 0.01.

It is not surprising that the trispectrum does not detect any non-Gaussian signature. Just as for the excess kurtosis of the pixel distribution in real space (see Sect. 4.2), the lowest order contribution to the trispectrum is proportional to f_{NL}^2 . This makes it naturally much less suited to find this kind of non-Gaussian signals. This fact can however be used as a counter-check, since if we believe to have detected a χ^2 type signal in the bispectrum, we should not find it when applying the trispectrum to perfectly clean data.

4.5.2. Point sources

The histogram of probability values in Fig. 14 (upper panel) does not show any extreme differences for $T^{(+)}$ between the Gaussian vs. Gaussian and the non-Gaussian vs. Gaussian comparisons, with only one value at $(\ell, a) \simeq (300, 0)$ having a particularly low probability of 10^{-8} . The *global probability* for being Gaussian is 8.8×10^{-4} . This changes dramatically if we look at $T^{(0)}$ (Fig. 14, lower panel). The diagonal estimator detects a very clear non-Gaussian signal, and the *meta-statistics* returns a probability of 0. It is quite surprising that the two estimators show such a huge difference, although they are indeed completely independent, since $T^{(+)}$ does not have any Gaussian contribution, as opposed to $T^{(0)}$.

Looking at the distribution of the low-probability points in (ℓ, a) space (Fig. 15 upper and lower panels), we find that $T^{(0)}$ is localised around $\ell \approx 7000$ and seems to prefer either very

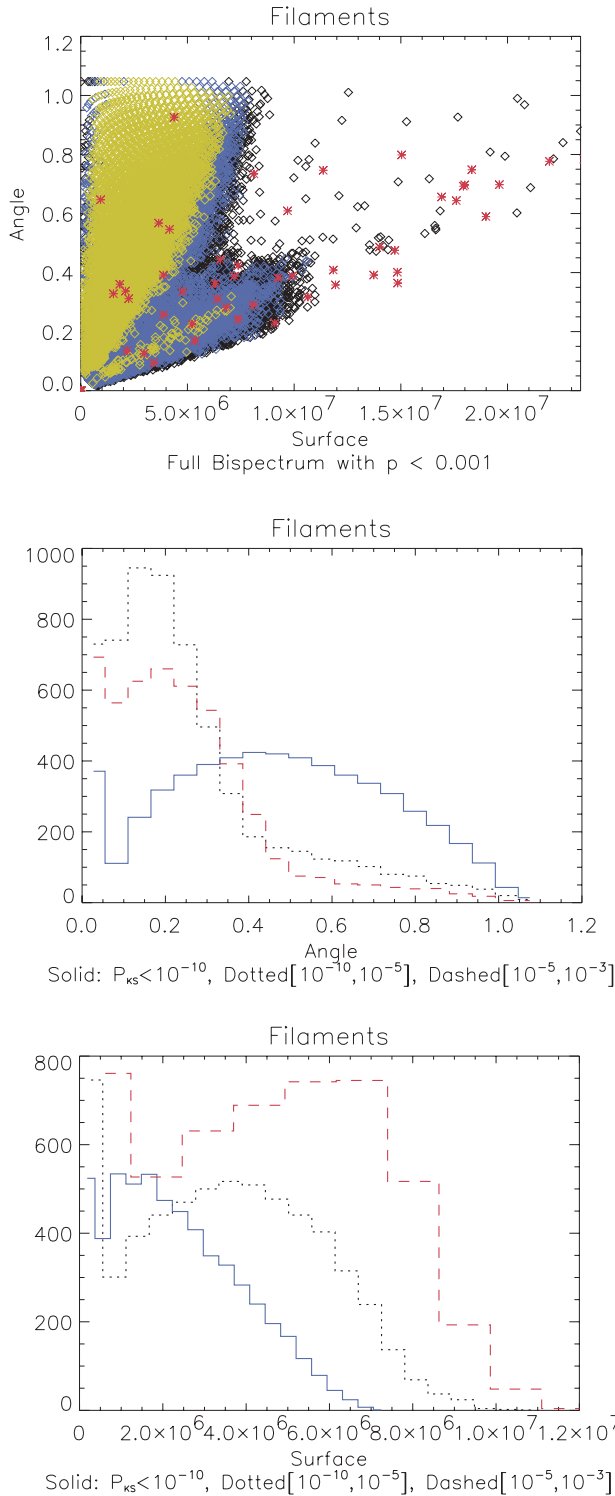


Fig. 12. For the full bispectrum of the filaments: distribution of KS probabilities in the surface-angle plane defined by the triplets in Fourier space (upper panel). Diamonds are for the comparison non-Gaussian maps versus Gaussian reference set. Black diamonds are for the KS probabilities comprised between 10^{-5} and 10^{-3} , gray diamonds represent $10^{-10} < P_{KS} < 10^{-5}$, and light gray diamonds stand for $P_{KS} < 10^{-10}$. The asterisks are for the comparison Gaussian counterparts versus reference set. The middle panel shows the distribution of angles for the above selected KS probabilities. The lower panel shows the distribution of surfaces for the same selection. Dashed lines are for $10^{-5} < P_{KS} < 10^{-3}$, dotted lines represent $10^{-10} < P_{KS} < 10^{-5}$, and solid lines stand for $P_{KS} < 10^{-10}$.

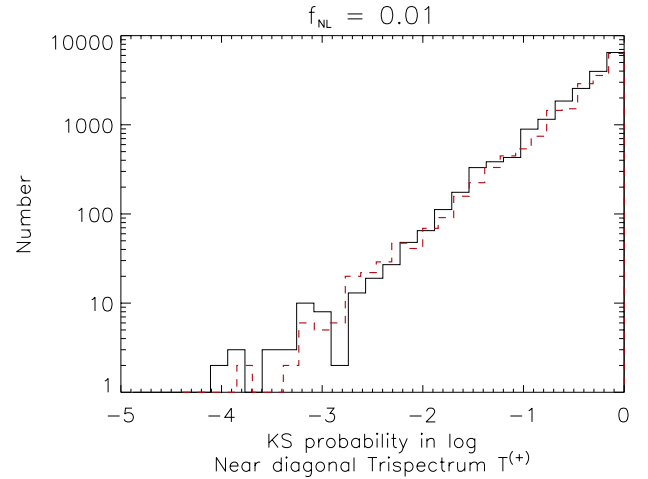


Fig. 13. For the χ^2 maps with a non-linear coupling factor $f_{NL} = 0.01$: distribution of the KS probabilities obtained by i) comparing the trispectrum estimators of the non-Gaussian maps to those of the Gaussian reference set (dashed line), and ii) comparing the trispectrum estimators of the Gaussian counterparts to those of the Gaussian reference set (solid line).

small or very large values of a , corresponding to oblong configurations. The weak signal of $T^{(+)}$ seems to be mainly due to points with low ℓ and very small a (diamonds in Fig. 15 upper panel).

4.5.3. Filaments

For the case of the non-Gaussian filament maps, the KS test gives probabilities that the non-Gaussian signal is issued from the same process as the Gaussian reference set as low as a few 10^{-20} . Figure 16 shows the difference in the distributions of the KS probabilities for diagonal and near-diagonal trispectra. Furthermore, the *meta-probability* obtained by applying the KS test on these probability distributions returns 0. In this case and similarly to the bispectrum, the non-Gaussian signatures are consequently undoubtedly detected. However, again the diagonal estimator seems more sensitive than the near-diagonal trispectrum. As shown in Fig. 16, there are many more (twice as many) low probabilities (high confidence detection) in the diagonal case than in the near-diagonal.

We try to visualise the morphological information contained in the trispectrum coefficients by displaying in (ℓ, a) space the KS probabilities (Figs. 17 and 18, upper panels). Those associated with the detection of the non-Gaussian signatures are in diamonds, and those associated with statistical fluctuations in the Gaussian realisations are in asterisks. We plot in Figs. 17 and 18 the distribution of a and ℓ in bins of KS probabilities for the trispectrum ($T^{(+)}$) and ($T^{(0)}$) respectively. Both trispectra prefer small values of a (or the diagonal $a \sim 2\ell$ which correspond to similar configurations), which are associated with strongly elongated structures. The diagonal trispectrum exhibits several other low-probability “blobs” at intermediate a values, but the corresponding histogram (the middle panel of Fig. 18) shows that these are somewhat less important. On the ℓ axis, $T^{(0)}$ seems non-Gaussian mainly for

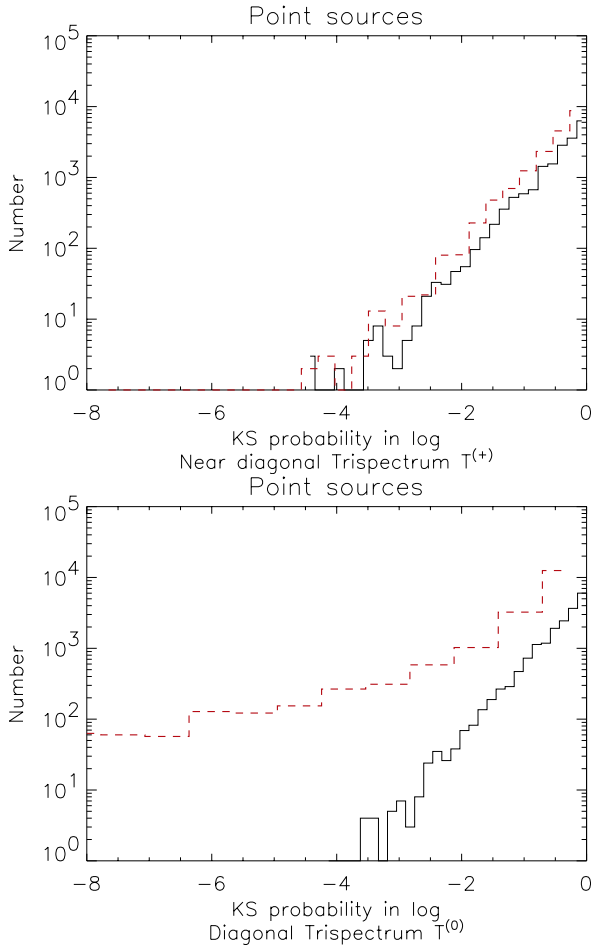


Fig. 14. For the point sources: distribution of the KS probabilities obtained by i) comparing the trispectrum estimators of the non-Gaussian maps to those of the Gaussian reference set (dashed line), and ii) comparing the trispectrum estimators of the Gaussian counterparts to those of the Gaussian reference set (solid line). The upper panel is for the near-diagonal trispectrum ($T^{(+)}$) and the lower panel for the diagonal trispectrum estimator ($T^{(0)}$).

values between 4000 and 6000, while $T^{(+)}$ rather detects a signal around $\ell = 2000$ –4000. All in all, the two trispectra together show a rich structure with clear concentrations of non-Gaussian signatures, not just random scatter.

5. Conclusions

In the present study, we investigate two of the major families of non-Gaussian estimators, namely Fourier-space based methods (the bi- and trispectrum) and wavelet-space based methods (the skewness and excess kurtosis of the wavelet coefficients). They are applied to three quite different data sets chosen to represent a rather complete sample of possible non-Gaussian signatures (namely: point sources, filaments, non-linearly coupled signals). Additionally, the methods were applied to two sets of Gaussian realisations (called reference set and counterpart set) with the same power spectra as the non-Gaussian maps. We then use the Kolmogorov-Smirnov test to quantify the level of detection of the non-Gaussian signatures by comparing the distributions of the estimator values for the non-Gaussian maps

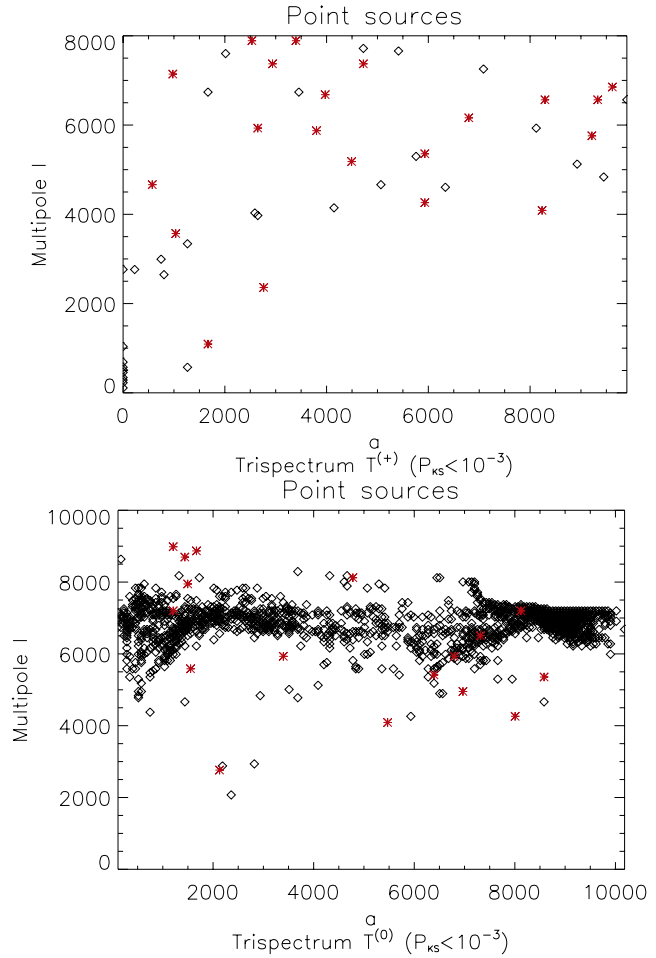


Fig. 15. For the trispectrum of the point sources: distribution, in (ℓ, a) space, of the KS probabilities lower than 10^{-3} . Asterisks are for the comparison between Gaussian counterparts and Gaussian reference set. Diamonds stand for the non-Gaussian versus Gaussian reference set comparison. The upper panel is for the near-diagonal trispectrum. Most diamonds are found at very small a in this case. The lower panel is for the diagonal trispectrum estimator.

versus the Gaussian reference set, and for the Gaussian counterpart set versus the reference set. The first comparison returns directly an estimate of the non-Gaussianity detected by a method, while the second case serves to illustrate the statistical fluctuations within the Gaussian signal itself. Furthermore, we have checked that other statistical tests such as the Kuiper and Anderson-Darling tests give the same results.

We find that the filaments represent a highly non-Gaussian signal. This statistical character is undoubtedly detected by both the Fourier and wavelet based methods in the three and four point estimators. For the point source maps, the non-Gaussian signatures are very significantly detected with the excess kurtosis of the wavelet coefficients and the diagonal estimator of the trispectrum, but less significantly with the bispectrum and very marginally with the skewness of the wavelet coefficients. This is consistent with the moments of the maps, where the non-Gaussianity shows up in the excess kurtosis as well. It is also expected from the physical nature of the signal: The maps contain the same number of negative and

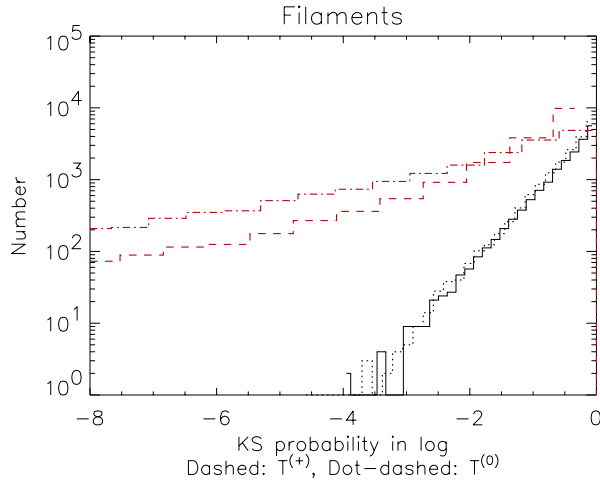


Fig. 16. For the trispectrum of the filaments: distribution of KS probabilities. The solid line is for the comparison of Gaussian counterparts vs. Gaussian reference set for the near-diagonal estimator ($T^{(+)}$). The dashed line is for the comparison of the non-Gaussian maps to the reference set, for the near-diagonal trispectrum. The dotted line is for the comparison of Gaussian counterparts vs. reference set, for the diagonal trispectrum ($T^{(0)}$). The dot-dashed line is for the non-Gaussian maps vs. reference set, for the diagonal estimator.

positive sources, on average, which suppresses the skewness. The χ^2 type maps show just the inverse behaviour, in that they are now the three point tests (skewness of the pixel distribution and of the wavelet coefficients as well as the bispectrum) which detect the non-Gaussian character best. As mentioned earlier this is related to the signal itself which is constructed by adding a positive contribution.

When assessing the relative level of detection, we notice that the wavelet analysis finds the non-Gaussian signatures in the χ^2 maps with a non-linear coupling coefficient of 1% at a very high confidence but only at the first decomposition scale (3 arcmin scale), while the bispectrum detection is somewhere between 3 and 4σ . Wavelets are therefore better at placing constraints on f_{NL} , a result which confirms the conclusion of a recent analysis of the COBE-DMR maps with wavelets by Cayon et al. (2003). The point source maps are clearly recognised as non-Gaussian by all methods. Finally we note that the diagonal trispectrum estimator is surprisingly much more sensitive than the nearly diagonal estimator, even though the latter does not contain a Gaussian contribution. This shows that care must be taken if not all components of a given estimator are computed, as the signal may be extremely localised. A forthcoming study will address this question in more detail.

Comparing the methods on a more fundamental level, we find as an additional advantage of the wavelet-based approach that it allows us to associate the non-Gaussian signatures with the features that have caused them in the map, at all the scales where they exist. Wavelet decomposition thus permits to take benefit of any scale-scale correlations that might exist in the non-Gaussian signal. This can be done directly in the wavelet space or by selecting the coefficients and reconstructing the signal with the inverse wavelet transform. These aspects have not been investigated in the present study.

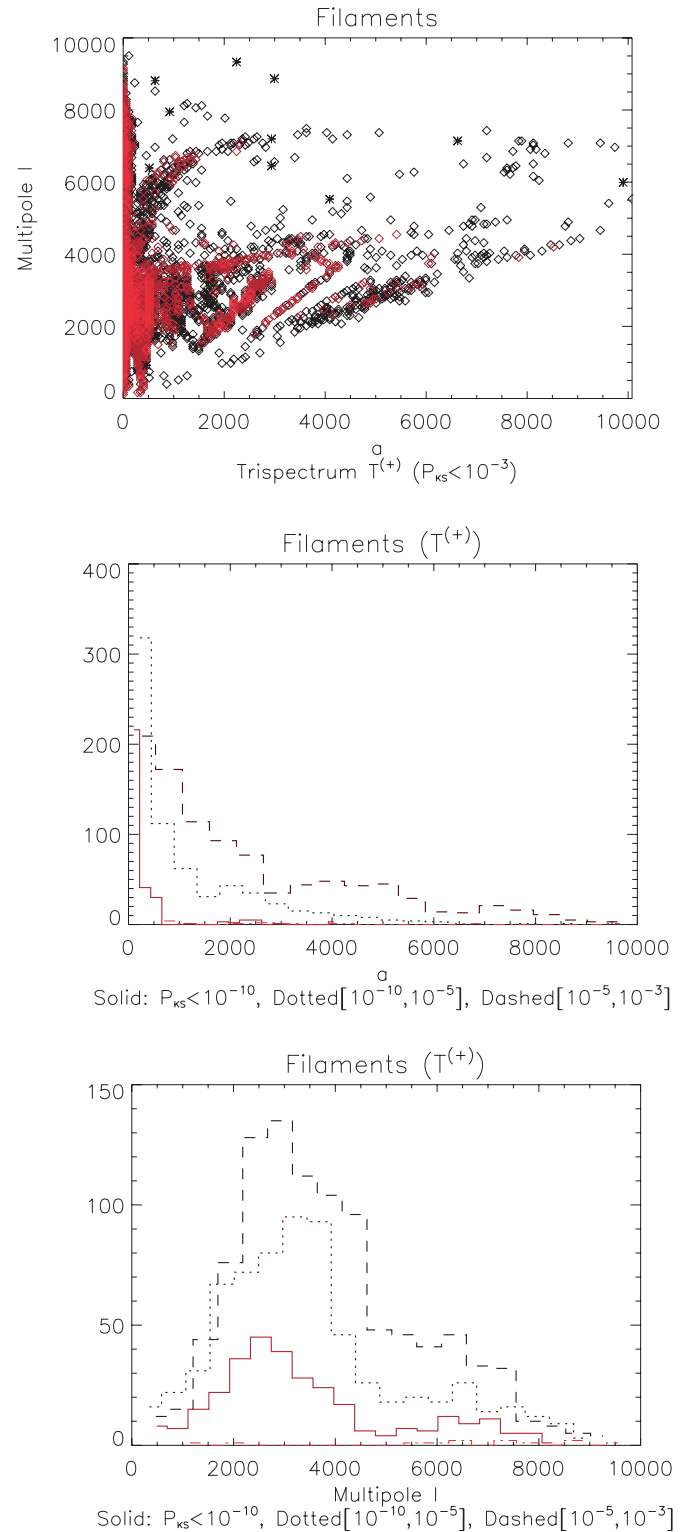


Fig. 17. For the near-diagonal trispectrum estimator of the filaments: the KS probabilities lower than 10^{-3} in the (ℓ, a) space (upper panel). The asterisks are for the comparison Gaussian counterparts versus reference set, and the diamonds for the comparison non-Gaussian maps versus reference set. The middle panel shows the distribution of a for the above selected KS probabilities. The lower panel shows the distribution of ℓ for the same selection. Dashed lines are for $10^{-5} < P_{\text{KS}} < 10^{-3}$, dotted lines represent $10^{-10} < P_{\text{KS}} < 10^{-5}$, and solid lines stand for $P_{\text{KS}} < 10^{-10}$.

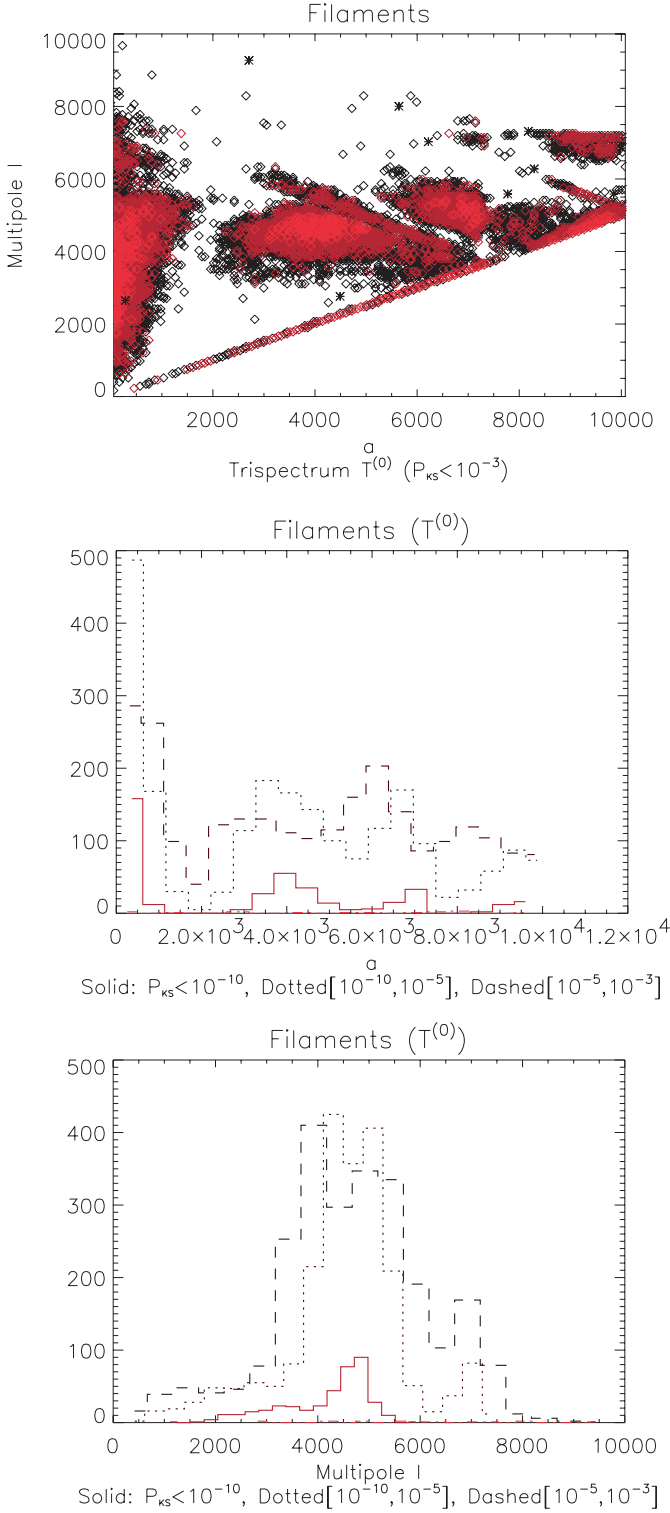


Fig. 18. For the diagonal trispectrum estimator of the filaments: the KS probabilities lower than 10^{-3} in the (ℓ, a) space (upper panel). The asterisks are for the comparison Gaussian counterparts versus reference set, and the diamonds for the comparison non-Gaussian maps versus reference set. The middle panel shows the distribution of a for the above selected KS probabilities. The lower panel shows the distribution of ℓ for the same selection. Dashed lines are for $10^{-5} < P_{KS} < 10^{-3}$, dotted lines represent $10^{-10} < P_{KS} < 10^{-5}$, and solid lines stand for $P_{KS} < 10^{-10}$.

However, the wavelet based estimators are lacking one important property of the Fourier approach. The bi- and trispectrum can be analytically predicted without resorting to Monte Carlo based methods. They can thus be directly related to physical phenomena, which explains their interest for cosmology. Additionally, the bi- and trispectrum allow us to probe a very large number of geometrical configurations for the triplets and the quadruplets as compared to the limited number of decomposition scales investigated by the wavelets.

The present comparison can be used to delineate a general strategy useful for analysing large CMB data sets. If we try to condense it into a few recommendations, we end up with the following steps:

1. *Look at the higher order moments in pixel space and the CPF first.* The cumulative probability function is very easy and fast to calculate. Nonetheless, it seems to have a similar power as the bi- and trispectrum where just the detection of non-Gaussian signatures is concerned. It therefore provides a quick check if one can expect to find a strong signal with the more sophisticated analysis techniques. We recommend that the maps are deconvolved with their power spectrum before testing the CPF.
2. *Apply wavelet based methods second.* Wavelets have the highest detection power of the methods presented here, and are only moderately more expensive to apply than the CPF test. If indeed a signal is detected, they can reconstruct its origin in pixel space.
3. *Use Fourier methods for a detailed analysis.* Together, the bi- and trispectrum furnish a large number of coefficients associated with different geometrical configurations. As the number of theoretical predictions for the bi- and trispectrum from various sources of non-Gaussian signatures is increasing, this allows a precise characterisation of any strong and detected non-Gaussianity in a map, and the use of accurate matched filters to determine its possible origin.

Clearly, combining both wavelet and Fourier based analyses seems the best strategy for studying the non-Gaussian signals. Together, they allow for very significant detections of the non-Gaussian signatures and a large amount of spatial information. In addition, they offer a theoretical basis to relate the physical processes to the measured quantities. Therefore, these methods offer currently the best chances of success when trying to identify the origin of the various sources of non-Gaussian signatures that are expected to contribute to the CMB signal.

Acknowledgements. The authors thank M. Douspis for helpful comments, P. Ferreira for fruitful discussions and M. Santos for kindly providing his code for the bispectrum in order to cross-check results. This work was partially supported by the CMBnet and the ACI-Jeunes Chercheurs “De la physique des hautes énergies à la cosmologie observationnelle”. PGC is funded by the Fundação para a Ciência e a Tecnologia, MK acknowledges financial support by the Swiss National Science Foundation. NA thanks TF and the University of Oxford for hospitality. PGC and MK further thank IAS Orsay for their hospitality. The authors acknowledge the remarks and suggestions of an anonymous referee that improved the article.

References

- Acquaviva, V., Bartolo, N., Matarrese, S., & Riotto, A. 2002 [astro-ph/0209156]
- Aghanim, N., & Forni, O. 1999, A&A, 347, 409
- Banday, A. J., Zaroubi, S., & Górski, K. M. 2000, ApJ, 533, 575
- Barreiro, R. B., & Hobson, M. P. 2001, MNRAS, 327, 813
- Bartolo, N., Matarrese, S., & Riotto, A. 2002, Phys. Rev. D, 65, 103505
- Bennett, C. L., Halpern, M., Hinshaw, G., et al. 2003 [astro-ph/0302207]
- Bernardeau, F., & Uzan, J.-P. 2002, Phys. Rev. D, 66, 103506
- Bernardeau, F., van Waerbeke, L., & Mellier, Y. 2003, A&A, 397, 405
- Castro, P. G. 2003, Phys. Rev. D, in press [astro-ph/0212500]
- Cayon, L., Sanz, J. L., Martinez-Gonzalez, E., et al. 2001, MNRAS, 326, 1243
- Cayon, L., Martinez-Gonzalez, E., Argueso, F., Banday, A. J., & Górski, K. M. 2003, MNRAS, 339, 1189
- Cohen, A., Daubechies, I., & Feauveau, J. C. 1990, Technical report, AT&T Bell Lab., Page: TM 11217-900529-07
- Coles, P., & Barrow, J. D. 1987, MNRAS, 228, 407
- Cooray, A. 2001, Phys. Rev. D, 64, 3514
- Cooray, A., & Hu, W. 2001, ApJ, 548, 7
- Cooray, A., & Kesden, M. 2003, New Astron., 8, 231
- Daubechies, I. 1988, Comm. Pure. Appl. Math., XLI, 909
- Durrer, R., Juskiewicz, R., Kunz, M., & Uzan, J. P. 2000, Phys. Rev. D, 62, 1301
- Ferreira, P. G., Magueijo, J., & Górski, K. M. 1998, ApJ, 503, L1
- Forni, O., & Aghanim, N. 1999, A&AS, 137, 553
- Gangui, A., Lucchin, F., Matarrese, S., & Mollerach, S. 1994, ApJ, 430, 447
- Grossman, A., & Morlet, J. 1984, SIAM J. Math. Anal., 15, 723
- Heavens, A. F. 1998, MNRAS, 299, 805
- Hobson, M. P., Jones, A. W., & Lasenby, A. N. 1999, MNRAS, 309, 125
- Hu, W. 2001, Phys. Rev. D, 64, 3005
- Jaffe, A. H. 1994, Phys. Rev. D, 49, 3893
- Jewell, J. 2001, ApJ, 557, 700
- Komatsu, E., & Spergel, D. N. 2001, Phys. Rev. D, 63, 3002
- Komatsu, E., Wandelt, B. D., Spergel, D. N., Banday, A. J., & Górski, K. M. 2002, ApJ, 566, 19
- Komatsu, E., Kogut, A., Nolta, M., et al. 2003 [astro-ph/0302223]
- Kunz, M., Banday, A. J., Castro, P. G., Ferreira, P. G., & Górski, K. M. 2001, ApJ, 563, L99
- Luo, X. 1994a, ApJ, 427, L71
- Luo, X. 1994b, Phys. Rev. D, 49, 3810
- Mallat, S. 1989, IEEE Trans. Patt. Anal. Machine Intell., 7, 674
- Mallat, S. 1998, A wavelet tour of signal processing (Academic Press)
- Martinez-Gonzalez, E., Gallegos, J. E., Argueso, F., Cayon, L., & Sanz, J. L. 2002, MNRAS, 336, 22
- Pando, J., Valls-Gabaud, D., & Fang, L. Z. 1998, Phys. Rev. Lett., 81, 4568
- Peacock, J. A. 1999, Cosmological physics (Cambridge University Press)
- Press, W. H., Teukolsky, S. A., Vetterling, W. T., & Flannery, B. P. 1992, Numerical Recipes
- Santos, M. G., Heavens, A., Balbi, A., et al. 2003, MNRAS, 341, 623
- Spergel, D. N., & Goldberg, D. M. 1999, Phys. Rev. D, 59, 3001
- Starck, J. L., Murtagh, F., & Bijaoui, A. 1998, Image Processing and Data Analysis: The Multiscale Approach (Cambridge University Press)
- Starck, J. L., Aghanim, N., & Forni, O. 2003, A&A, submitted
- De Troia, G., Ade, P. A. R., Bock, J. J., et al. 2003 [astro-ph/0301294]
- Vetterli, M., & Herley, C. 1992, IEEE Trans. on Inf. Theory, 40, 2207
- Wang, X., Tegmark, M., Jain, B., & Zaldarriaga, M. 2002 [astro-ph/0212417]